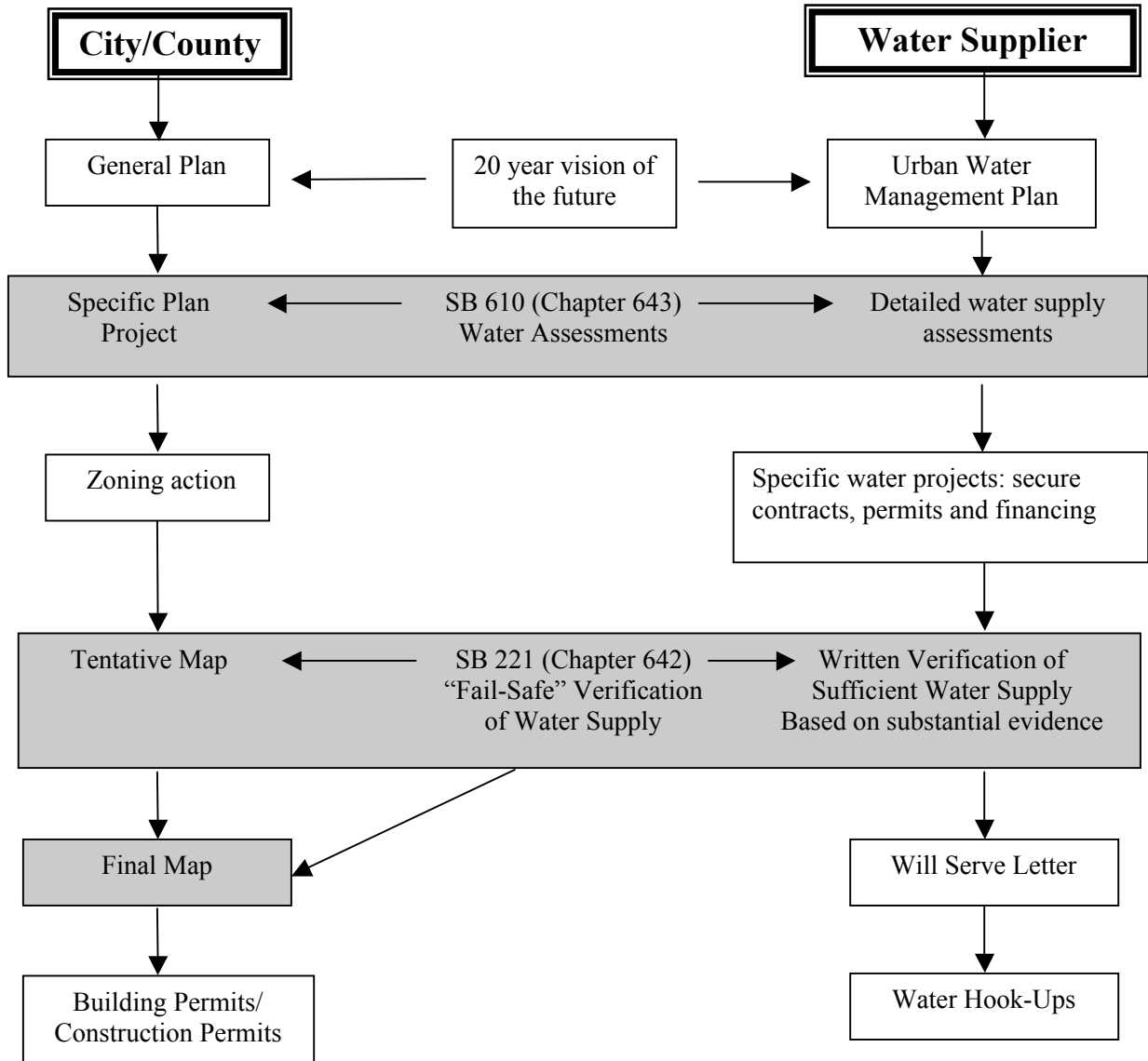


Two laws that integrate land use and water planning

The following chart illustrates the relationship between a local land use agency and a water supplier in their planning processes. The General Plan, prepared by a City or County Planning Department, and the Urban Water Management Plan prepared by a Water Supplier are the critical source documents used to substantiate the information required by SB 610 and SB 221 at the local level.



For additional information on either the *California Environmental Quality Act* or General Plan Guidelines, please refer to the publications available from the Governor's Office of Planning and Research at: [www.opr.ca.gov](http://www.opr.ca.gov).

For information and guidance related to the *Urban Water Management Planning Act*, please refer to the Department of Water Resources, Office of Water Use Efficiency available at: <http://www.owue/>.

California Department of Water Resources. Guidebook for Implementation of Senate Bill 610 and Senate Bill 221 of 2001 to Assist Water Suppliers, Cities, and Counties in Integrating Water and Land Use Planning. 8 Oct. 2003, [water.ca.gov/LegacyFiles/pubs/use/sb\\_610\\_sb\\_221\\_guidebook/guidebook.pdf](http://water.ca.gov/LegacyFiles/pubs/use/sb_610_sb_221_guidebook/guidebook.pdf).