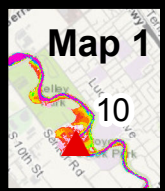


Upper Coyote Creek: Q = 7300 cfs at D/S Anderson



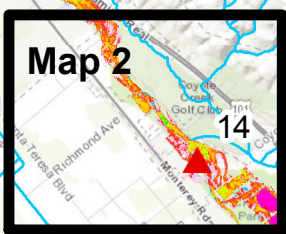
Legend

Flooding Depth @ 7300 cfs

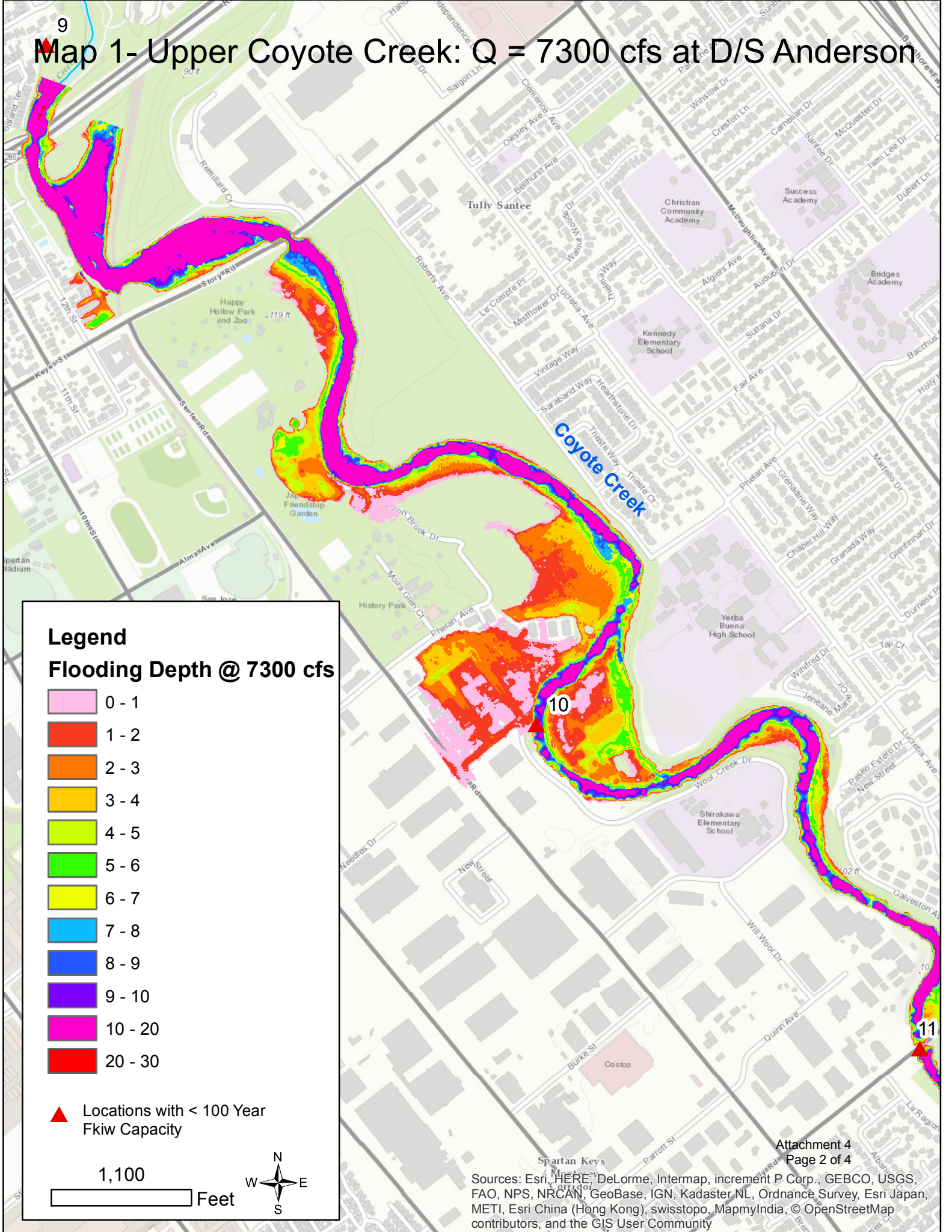
0 - 1
1 - 2
2 - 3
3 - 4
4 - 5
5 - 6
6 - 7
7 - 8
8 - 9
9 - 10
10 - 20
20 - 30

▲ Locations with < 100 Year Fkiw Capacity

10,000 Feet



Map 1- Upper Coyote Creek: Q = 7300 cfs at D/S Anderson



Legend

Flooding Depth @ 7300 cfs

- 0 - 1
- 1 - 2
- 2 - 3
- 3 - 4
- 4 - 5
- 5 - 6
- 6 - 7
- 7 - 8
- 8 - 9
- 9 - 10
- 10 - 20
- 20 - 30

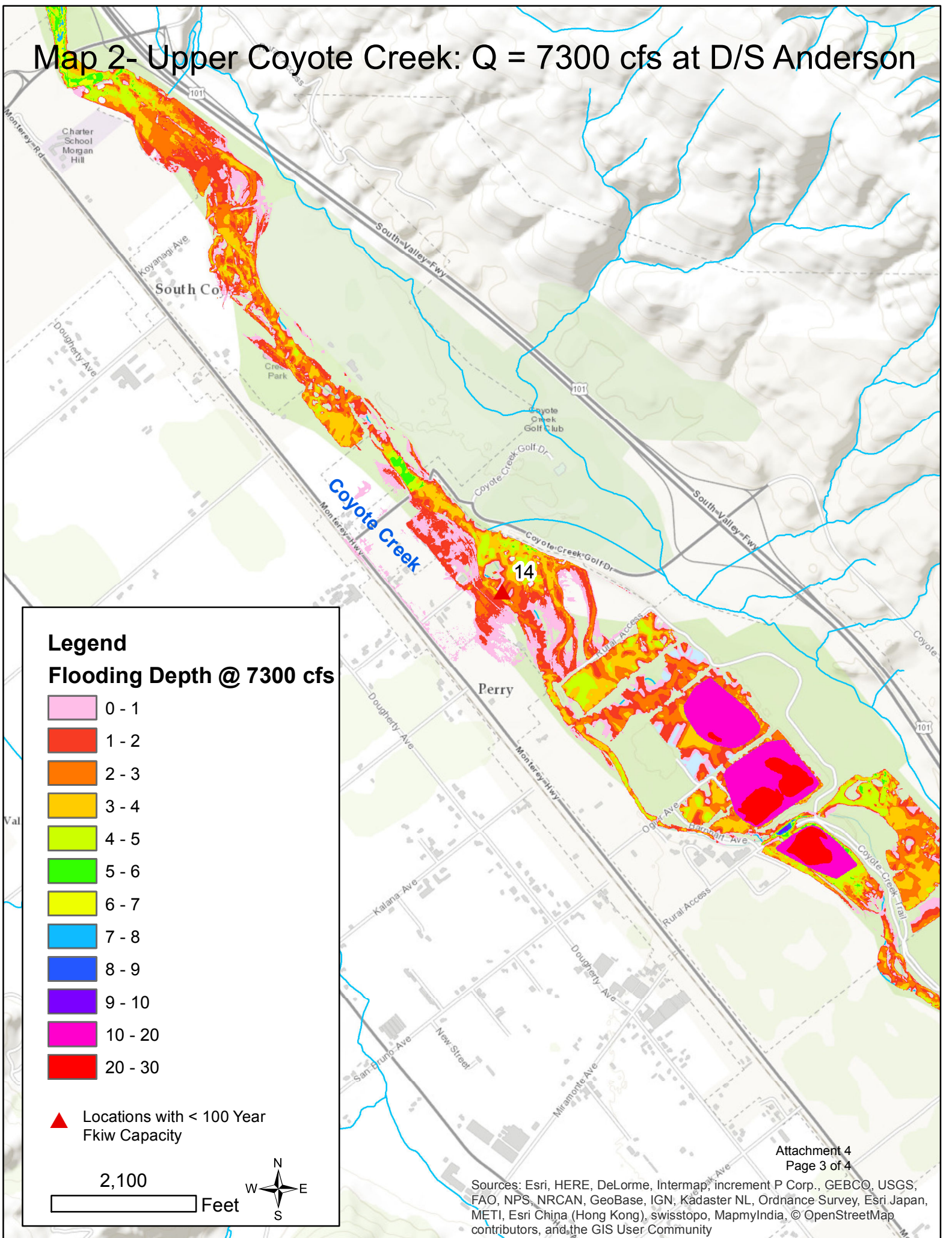
▲ Locations with < 100 Year Fkiw Capacity

1,100

Feet



Map 2- Upper Coyote Creek: Q = 7300 cfs at D/S Anderson



Legend

Flooding Depth @ 7300 cfs

- 0 - 1
- 1 - 2
- 2 - 3
- 3 - 4
- 4 - 5
- 5 - 6
- 6 - 7
- 7 - 8
- 8 - 9
- 9 - 10
- 10 - 20
- 20 - 30

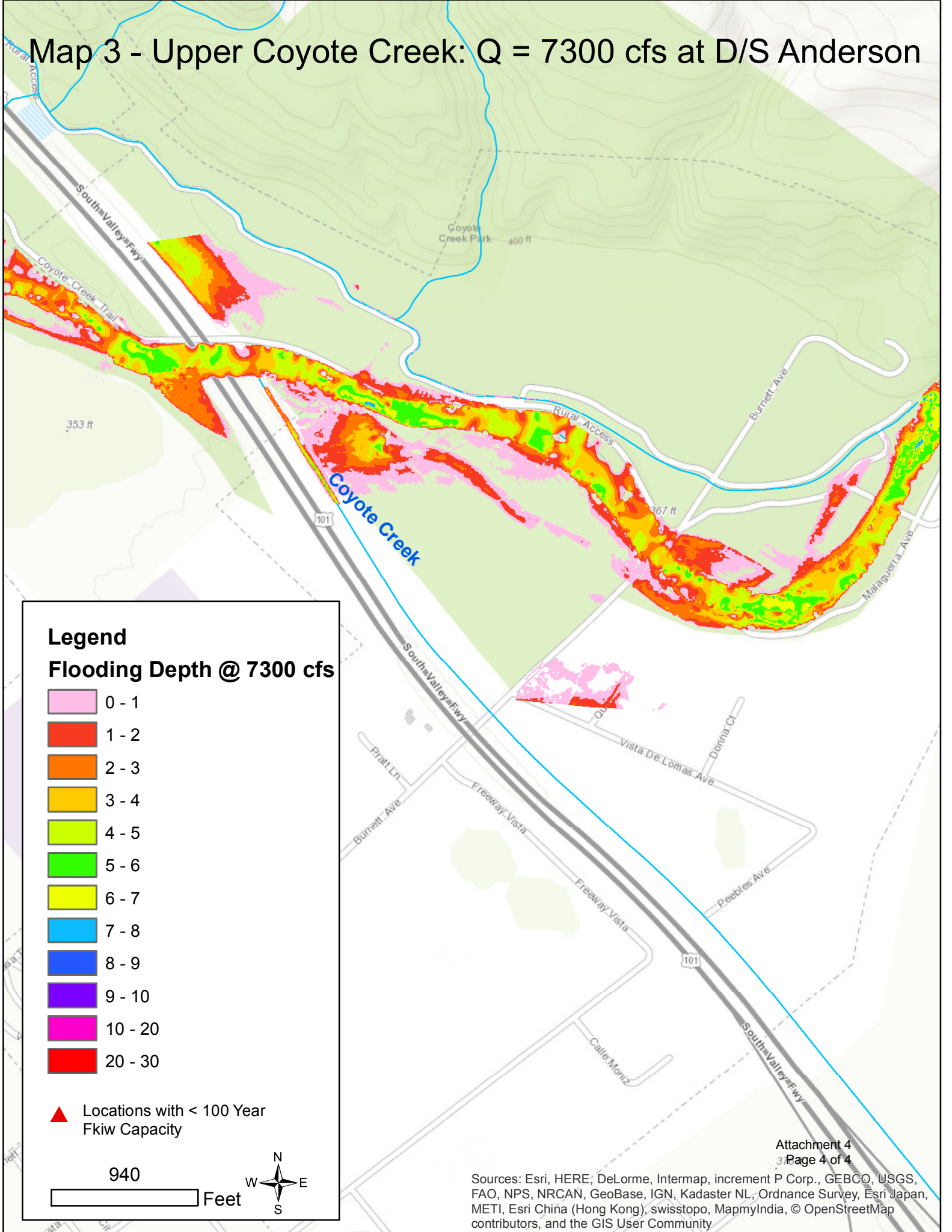
▲ Locations with < 100 Year Fkiw Capacity

2,100

Feet



Map 3 - Upper Coyote Creek: Q = 7300 cfs at D/S Anderson



Legend

Flooding Depth @ 7300 cfs

- 0 - 1
- 1 - 2
- 2 - 3
- 3 - 4
- 4 - 5
- 5 - 6
- 6 - 7
- 7 - 8
- 8 - 9
- 9 - 10
- 10 - 20
- 20 - 30

▲ Locations with < 100 Year Fkiw Capacity

