

January 14, 2025



Santa Clara Valley Water District Board of Directors Meeting | Agenda Item XX

Delta Conveyance Project

Carrie Buckman

Environmental Program Manager
CA Department of Water Resources

Graham Bradner

Executive Director
Delta Conveyance Design & Construction Authority



Collaboration & Momentum

Important, Successful Year

- Certified EIR
- Updated Cost Estimate
- Published Benefit Cost Analysis
- Supported Agency Funding Decisions
- Conducted Dozens of PWA Presentations
- Secured 12 Yes Board Votes
- Strong support from Governor Newsom

Decadeslong Delta tunnel water project may finally be nearing a historic decision

BY DAN WALTERS
MAY 24, 2024



Department of Water Resources Approves Delta Conveyance Project

Final EIR Certified; Engineering, Design and Permitting to Move Forward

Analysis: Benefits of the Delta Conveyance Project Far Exceed Costs

Published: May 16, 2024

PRESS RELEASE: Water agencies across California vote affirmatively to support the Delta Conveyance Project; protect critical water supply against climate change

Press Release/Notice Press Release/Other November 22, 2024 0 84

Climate Models Predict “Weather Whiplash”

-32% to +47%
changes in
projected annual runoff!

Increased
precipitation falling as
rain instead of snow

More extreme
drought and flood cycles

Intense precipitation
events scattered within
dry stretches

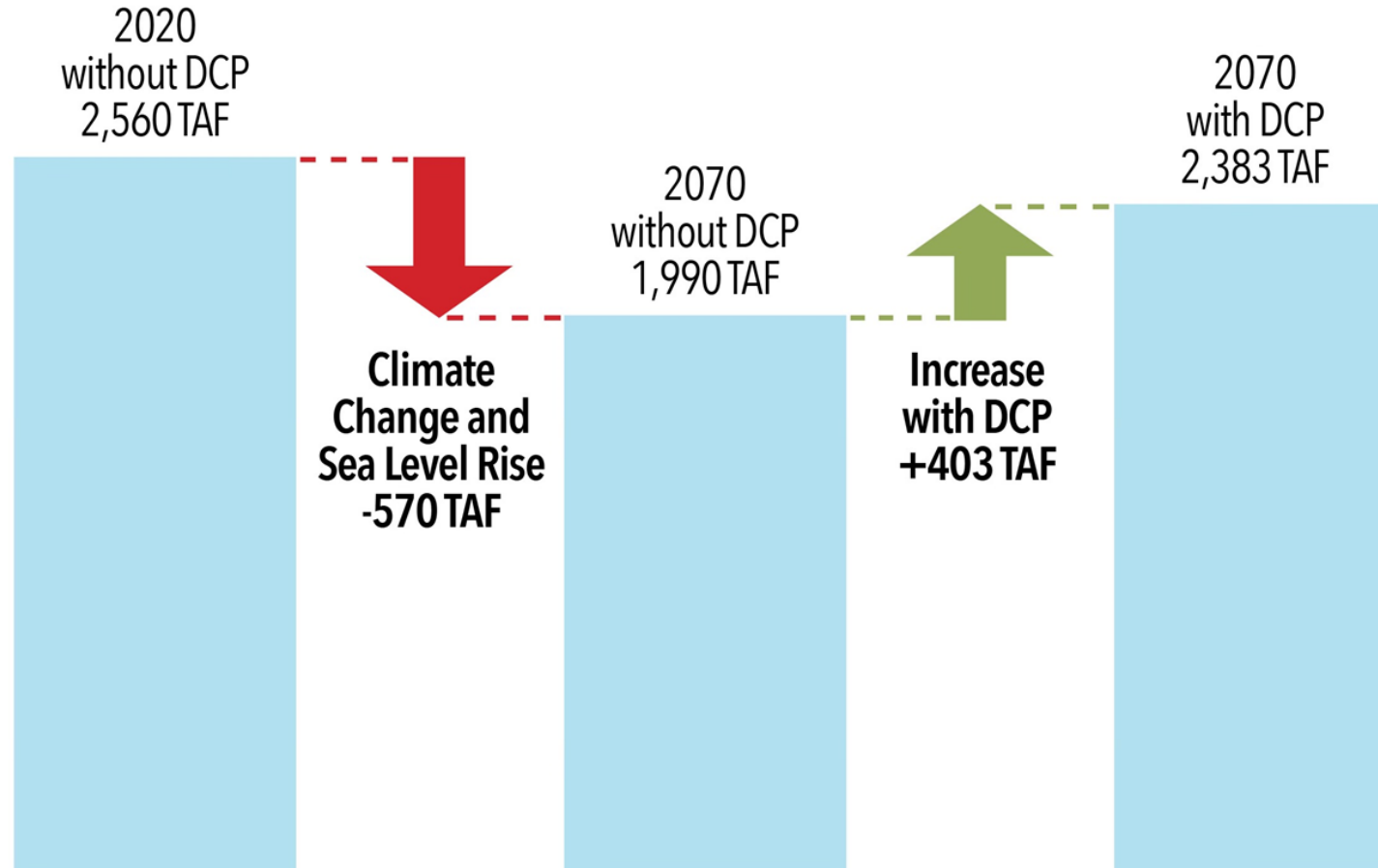
Currently, extreme precipitation events with high water flows cannot be fully captured and moved

How would the Delta Conveyance Project Help?

- Adding intakes in the north Delta would allow the capture and movement of water in the winter that would otherwise be unavailable.
- North Delta intakes would add capacity to safely divert in the winter during high flow conditions, while meeting water quality and species protections.
- This added ability to divert high flows will help guard against declining baseline water deliveries, protect water agencies' baseline supplies, and minimize future losses.
- Modernizing the aging SWP infrastructure will protect against seismic risk and sea level rise and aid in ensuring that we capture, move and store water when it is available and when it is safe for fish and water quality.



State Water Project Deliveries

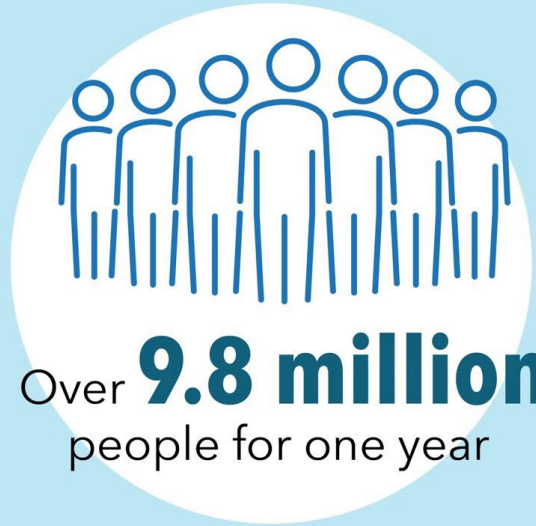


The Delta Conveyance Project would yield about half a million acre-feet of water per year

Missed Opportunities

January 1, 2024 - June 13, 2024

941,000 acre-feet of water = enough water to supply:



or



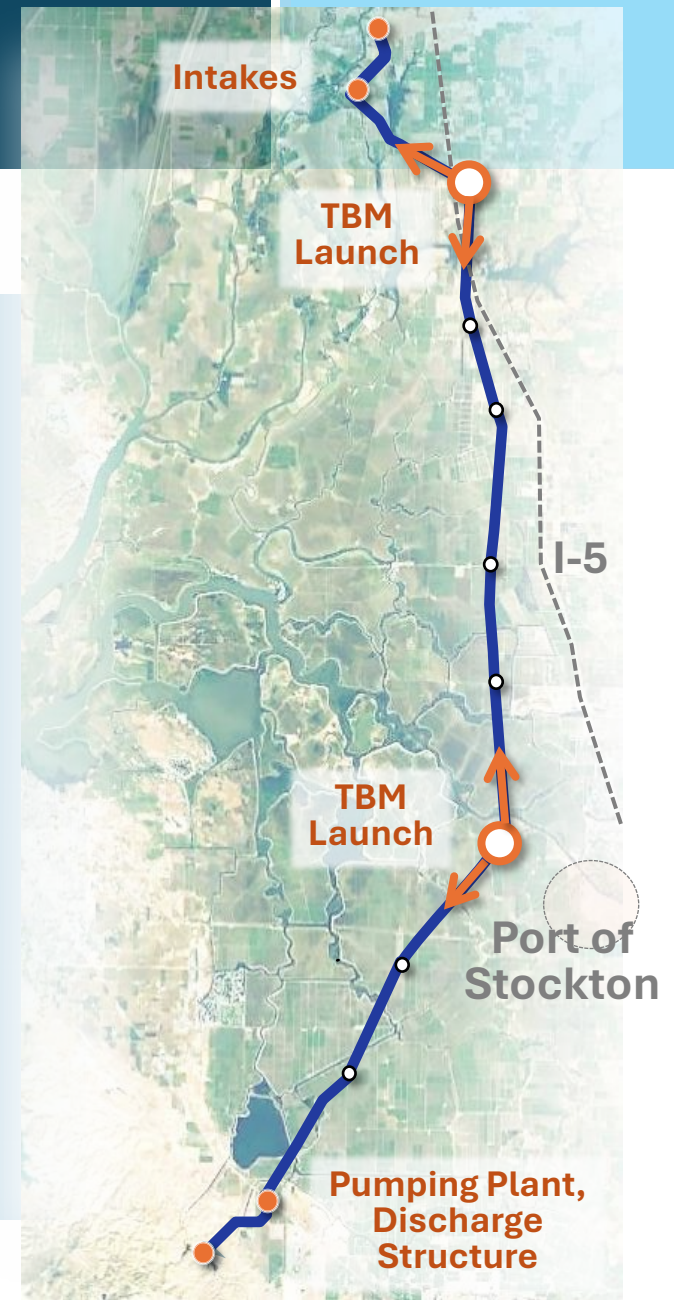
Bethany Reservoir Alignment – A Very Different Project

Bethany Reservoir Alignment – 6,000 cfs (~10% design)

- Two (2) new intakes in the North Delta
- Conveyance tunnel: 45 miles of 36-ft ID single tunnel, 11 shafts
- New pumping plant, aqueducts and discharge structure connecting directly to Bethany Reservoir

Project developed to reduce impacts:

- Focused on siting major facilities, understanding local traffic conditions, and reducing construction effects
- Smaller footprint – considered ways to minimize noise, traffic, power needs, aesthetic effects, boating and waterway effects, and land disturbance
- Route avoids heart of the Delta



DCP Cost Estimate Update



- **2020 Cost Assessment = \$15.9B (2020\$, undiscounted)**
- **2024 Cost Estimate = \$20.1B (2023\$, undiscounted)**
 - Costs based on Bethany Reservoir Alignment engineering documentation, unit rates, quantities, and durations
 - Includes \$960M for mitigation and \$200M for Community Benefits Program
 - Design & construction innovations show potential to manage cost and risks
 - Multiple reconciliations with independent estimates to improve confidence



\$15.9B (2020) escalates to \$20.2B (2023) vs. \$20.1B (2023)

DCP Readily Passes the Benefit/Cost Test

BENEFITS

- **Water supply reliability and quality:** offset negative impacts of climate change on water deliveries
- **Seismic resilience:** maintain deliveries even after a major seismic event

COSTS

- **Construction:**
Updated cost estimate and secondary estimate
- **Operations and maintenance**
- **Unmitigated environmental impacts**

*Economic evaluation performed by Berkeley Research Group:
Benefit/Cost Ratio = 2.20*

Components of the Community Benefits Program

DCP Community Fund

Proposed overarching fund to support community-prioritized projects in the Delta

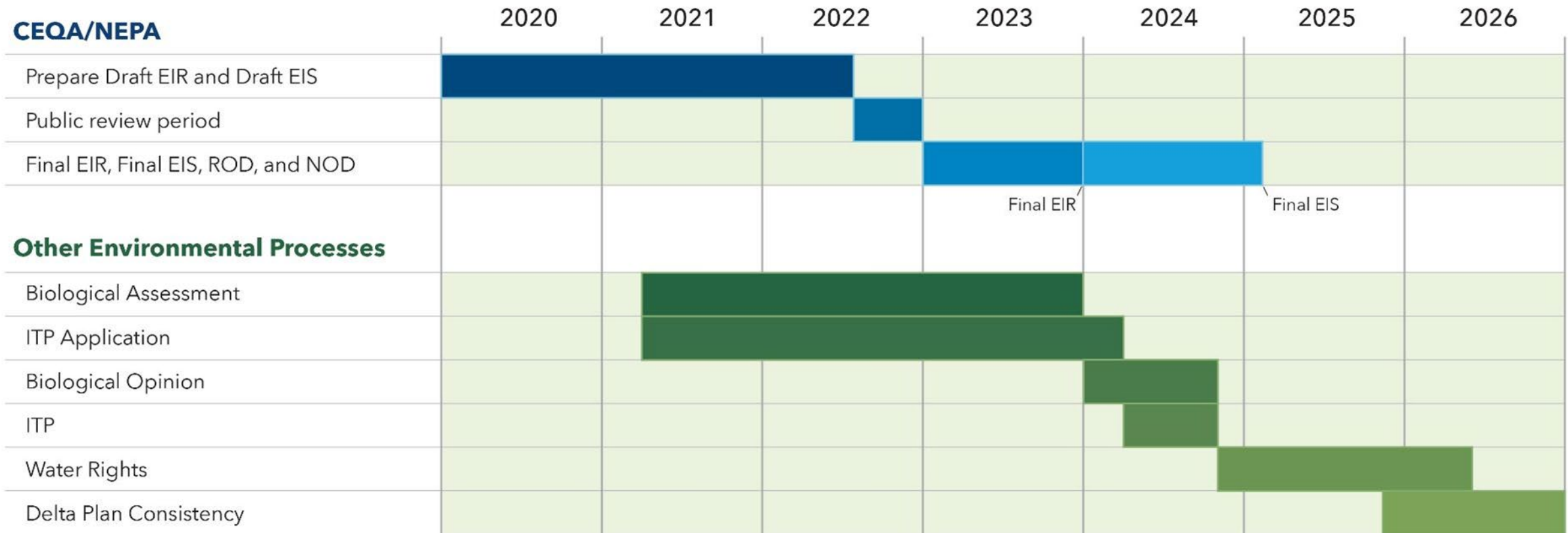


DCP Implementation Commitments

- Hiring targets, job training, and education
- Local business utilization
- Infrastructure and facilities



Schedule to Complete Key Permits



Continue to identify design and construction innovations to improve constructability and manage costs and risks

Conduct investigations and surveys to better define site conditions and advance the engineering of the project

Secure key permits related to water rights, state and federal Endangered Species Act, and Delta Plan consistency

Advance planning efforts for the Community Benefits Program and use of water management tools



Thank You!
Questions?

This Page Intentionally Left Blank