



# Preliminary FY 2026-27 Groundwater Production Charges

Presented by: **Carmen Narayanan**, Financial Planning & Revenue Manager  
Santa Clara Valley Water Commission, January 28, 2026

Attachment 1  
Page 1 of 26

*Photo: Dr. Robert W. Gross Groundwater Recharge Ponds*



## COMMISSION ACTIONS TODAY

2

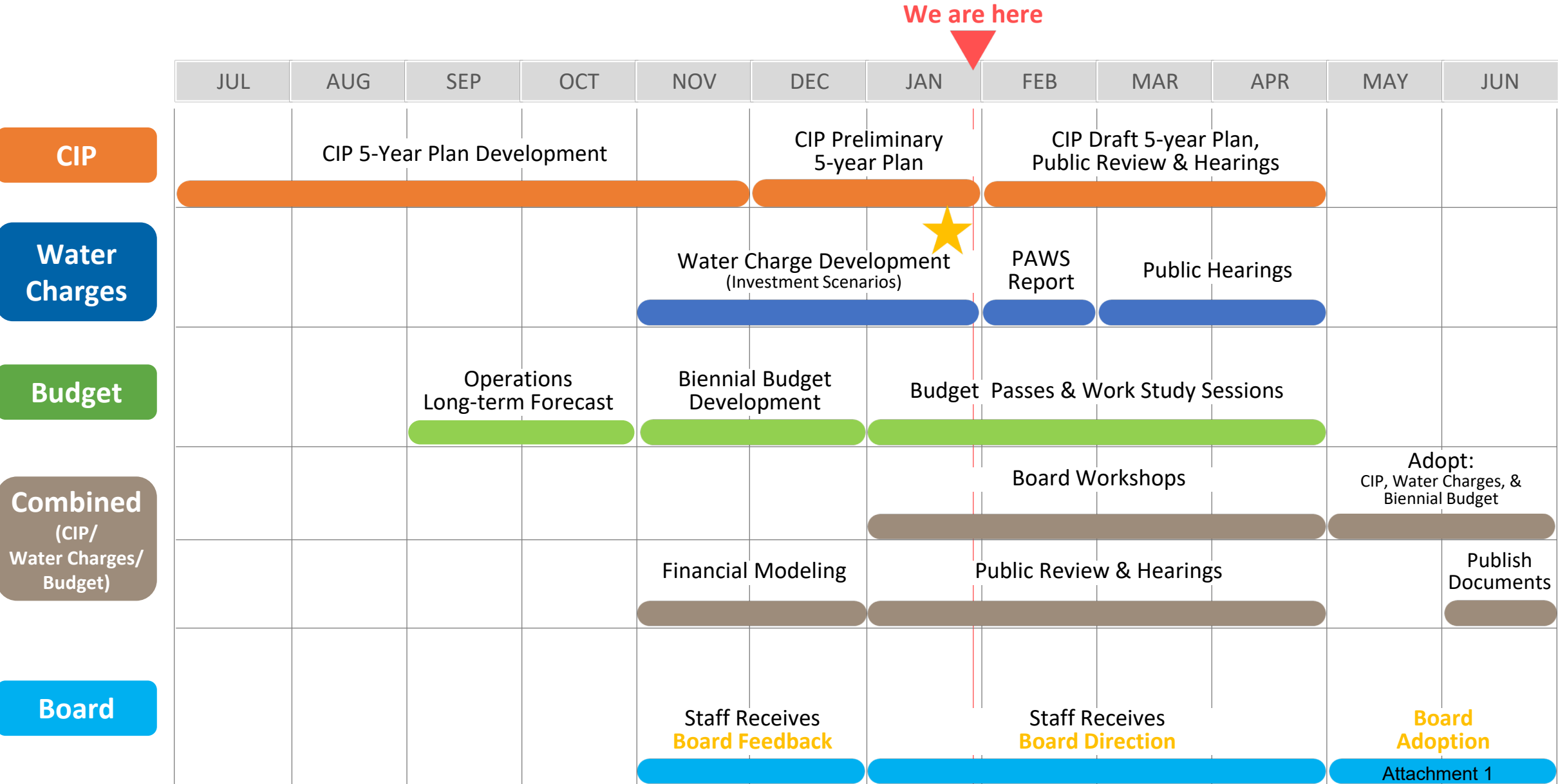
- 1. Discuss Fiscal Year 2026-27 Preliminary Groundwater Production Charges**
- 2. Provide Comment to the Board as Desired**



## TOPICS

- Background Information, System Information & Water Utility Outlook**
- Water Usage & Water Utility Cost Projections**
- Preliminary Groundwater Production Charges (Baseline & Scenarios)**
- Other Information**
- Schedule & Summary**

# Annual CIP, Biennial Budget & Water Charges Development Timeline



# A comprehensive, flexible water system serving over 2 million people

## Santa Clara Valley Water District Infrastructure



4

### Water Utility:

- 393 ACRES OF RECHARGE PONDS
- 142 MILES OF PIPELINES
- 10 RESERVOIRS
- 3 PUMP STATIONS
- 3 WATER TREATMENT PLANTS
- 1 WATER PURIFICATION CENTER



Rinconada Water Treatment Plant



Silicon Valley Advanced Water Purification Center



Anderson Dam Tunnel and Seismic Retrofit Projects



Water Quality Lab



Coyote Pump Plant

**Water Sources**  
55% Imported  
30% Local  
5% Recycled  
10% Conservation

### Legend

- Lakes, reservoirs, rivers, creeks, & bays
- Raw water pipeline
- Drinking water pipeline
- Pump Plants
- Drinking Water Treatment Plants
- South County Regional Wastewater Authority
- Silicon Valley Advanced Water Purification Center
- Percolation Ponds



# Resolution 99-21 is the Board's Pricing Policy

- Groundwater charges are levied within a zone for benefits received
- All water sources and water facilities contribute to common benefit within a zone regardless of cost, known as “pooling” concept
  - Helps maximize effective use of available resources
- Agricultural water charge shall not exceed 10% of M&I water charge

 Zone W-2

 Zone W-5  
 Zone W-7  
 Zone W-8

# Groundwater Benefit Zones

## North County Zone W2

- Santa Clara County north of Metcalf Road

## South County Zone W5

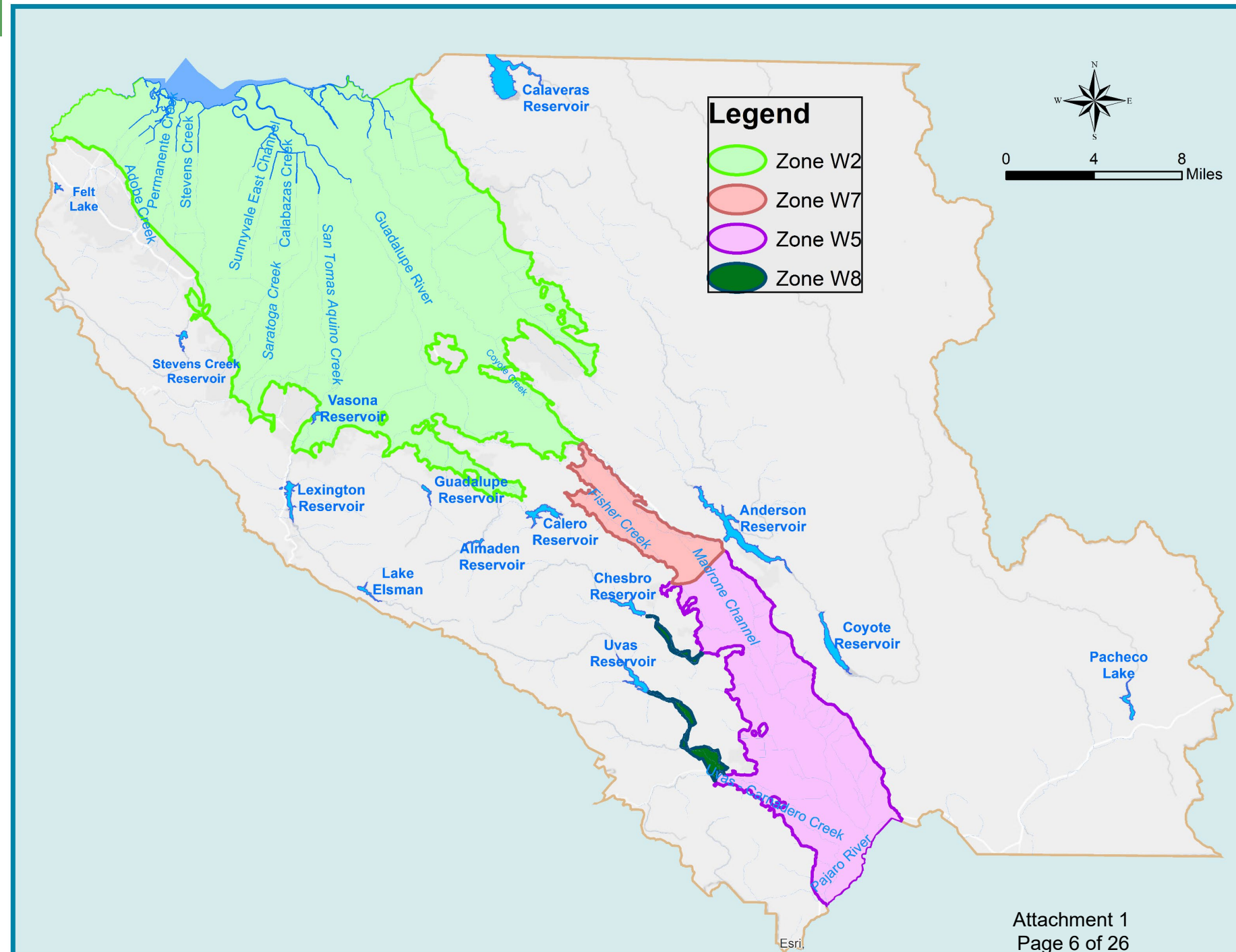
- Morgan Hill to Pajaro River

## South County Zone W7

- Coyote Valley

## South County Zone W8

- Foothills below Uvas & Chesbro Reservoirs



# Infrastructure

## DRIVES DIFFERENT GROUNDWATER PRODUCTION CHARGES IN EACH ZONE

7

### North County

- 3 water treatment plants
- Reservoirs –
  - Almaden
  - Calero
  - Guadalupe
  - Lexington
  - Stevens Creek
  - Vasona
- Silicon Valley Advanced Water Purification Center
- Imported Water – State Water Project

### Shared

- Reservoirs –
  - Anderson
  - Coyote
  - Pacheco
- Imported Water –
  - Central Valley Project
- *Shared facilities do not benefit Zone W-8*

### South County

- Reservoirs –
  - Chesbro
  - Uvas
    - *Does not benefit Zone W-7*
- SCRWA Recycled Water System
  - *Benefits Zone W-5 only*

# Strategic Outlook

8

- **Valley Water remains in an era of investment**
  - To upgrade, rehabilitate, replace existing water supply infrastructure that was built decades ago
  - To invest in new infrastructure in response to changing weather patterns
- **Focus on securing water supplies through regional projects participation**
- **Baseline water rate case investment assumptions**
  - Maintain alignment with Preliminary FY27-31 5-Year CIP
  - Reflect lower rate projections driven by August 26, 2025 decision by the Board to suspend development of the Pacheco Reservoir Expansion Project

# Regional Projects

9

## Valley Water plans to participate in three large, complex regional projects:

1. B.F. Sisk Dam Raise and Reservoir Expansion Project (Owned by the Bureau of Reclamation and operated by the California Department of Water Resources, \$1.2B, in 2025 dollars).
2. The Sites Reservoir (Sites Project Authority with State and Federal partners, \$6.8B, in 2025 dollars).
3. Delta Conveyance (California State Department of Water Resources, \$20.1B, in 2023 dollars).

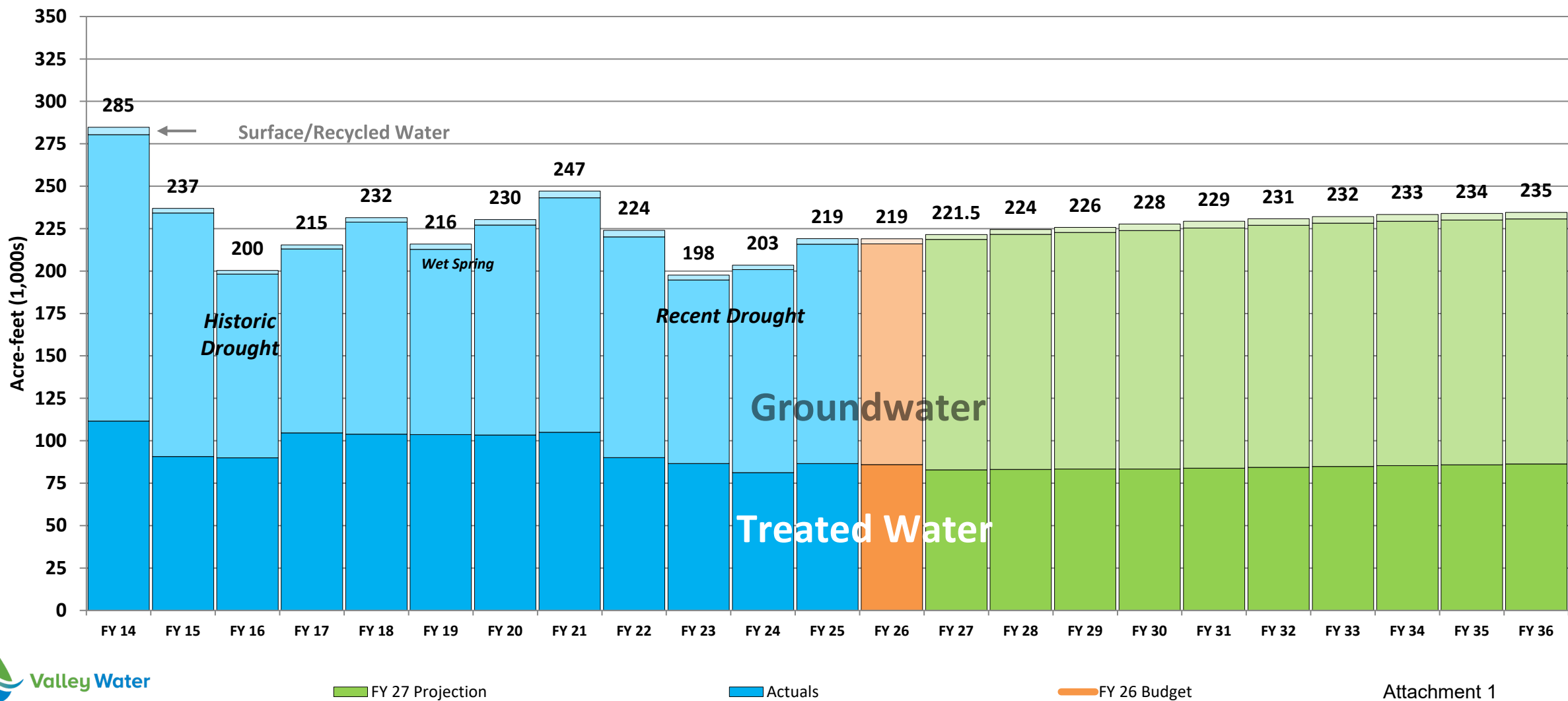


*Harvey O. Banks Delta Pumping Plant,  
California DWR.*

# District Managed Water Usage

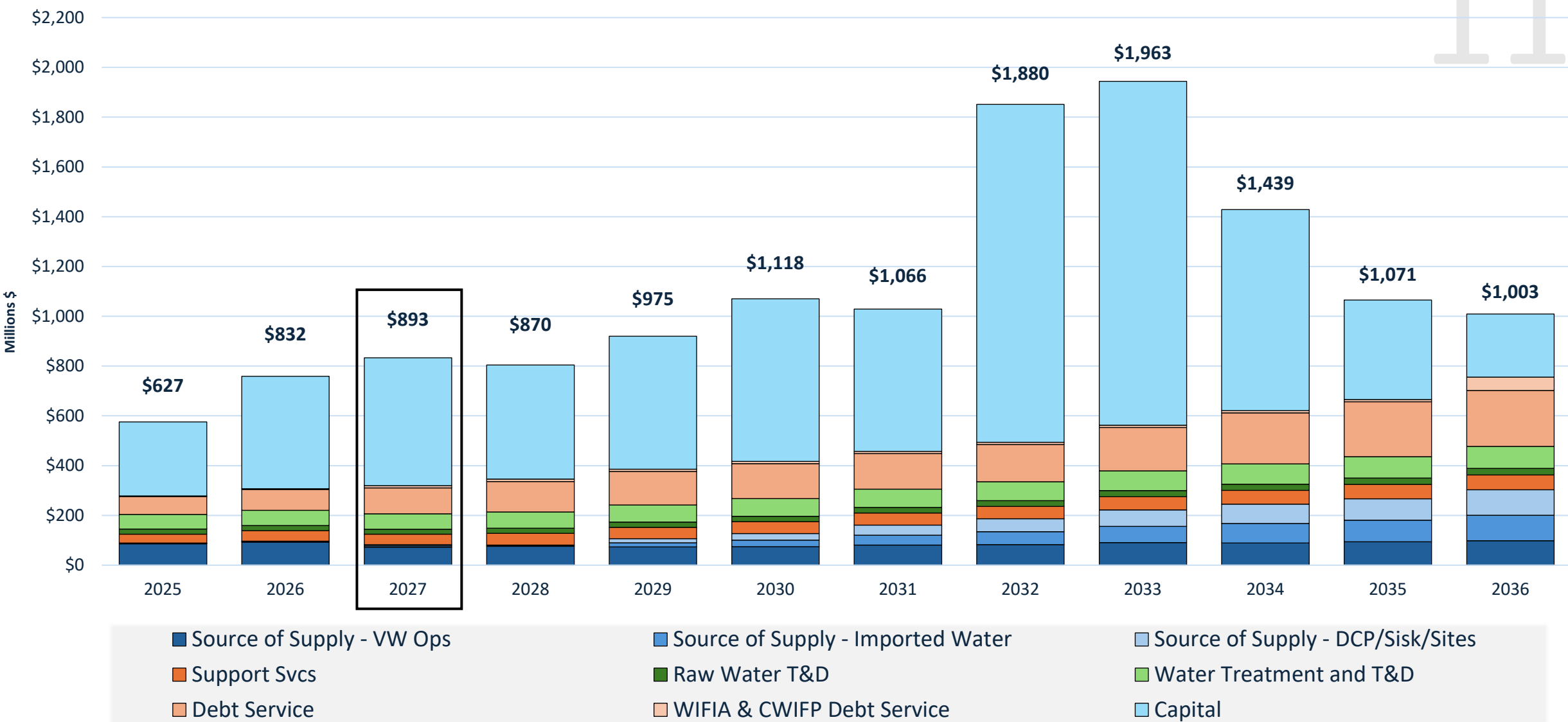
## Reflects Lower Water User Projections Post 2023 Drought Rebound

District Managed Water Usage (TAF)



# Preliminary Water Utility Cost Projection

11



Cost Projection reflects Baseline Assumptions.

# Rate Setting Outlook for FY 2026-27

## FY 27 Baseline Case Assumptions

12

- Plan for slightly increased District-managed water use of 221,500 AF
- Anderson Dam Seismic Retrofit
- Master Plan projects: SCADA, Water Treatment Plants & Distribution
- Dam Safety Program: Almaden, Calero, Coyote, & Guadalupe
- Pure Water Silicon Valley *Demonstration Facility & Full-Scale Direct Potable Reuse (DPR) Facility*
- Delta Conveyance project participation \*
- San Luis Reservoir: B.F. Sisk Dam Raise with up to 63 TAF Storage \*
- Sites Reservoir project participation \*
- SWP Tax necessary to pay 100% of SWP costs *Excludes SWP portion of Delta Conveyance*
- Maintain Agricultural Rate set at 9.25% of lowest M&I rate (Zone W-8)

Note: Pacheco Reservoir Expansion Project has been eliminated from baseline case assumptions.  
SWP: State Water Project

\* Project costs are reflected as Operations & Maintenance costs.

# Rate Setting Outlook for FY 2026-27

## FY 27 Rate Scenario Ideas

13

- **Baseline**
- **Baseline with expanded Sites participation**

# FY 2026-27 Preliminary Groundwater Production Charge Projection

14

Municipal & Industrial Rate by Zone	FY 2025-26 GW Production Charge	FY 2026-27 Preliminary GW Production Charge	Preliminary % Increase	Increase to Average Monthly Bill * (11 HCF/month)
North County W-2	\$2,450.00	\$2,673.00	<del>9.9%**</del> 9.1%	\$5.63
South County W-5	\$624.50	\$664.50	<del>7.9%**</del> 6.4%	\$1.01
South County W-7	\$834.50	\$906.50	<del>11.2%**</del> 8.6%	\$1.82
South County W-8	\$464.00	\$501.00	8.0%	\$0.93
Agricultural	\$43.00	\$46.50	8.0%	\$0.58***

\* Does not include any increase that a retailer would layer on top

\*\* Reflects prior rate increases (%) projected during the FY2025-26 planning cycle. \*\*\* Assumes Agricultural users who pump 2 AF of water, per acre, per year.

# Preliminary Groundwater Charge Increase Projection

## Baseline Scenario

15

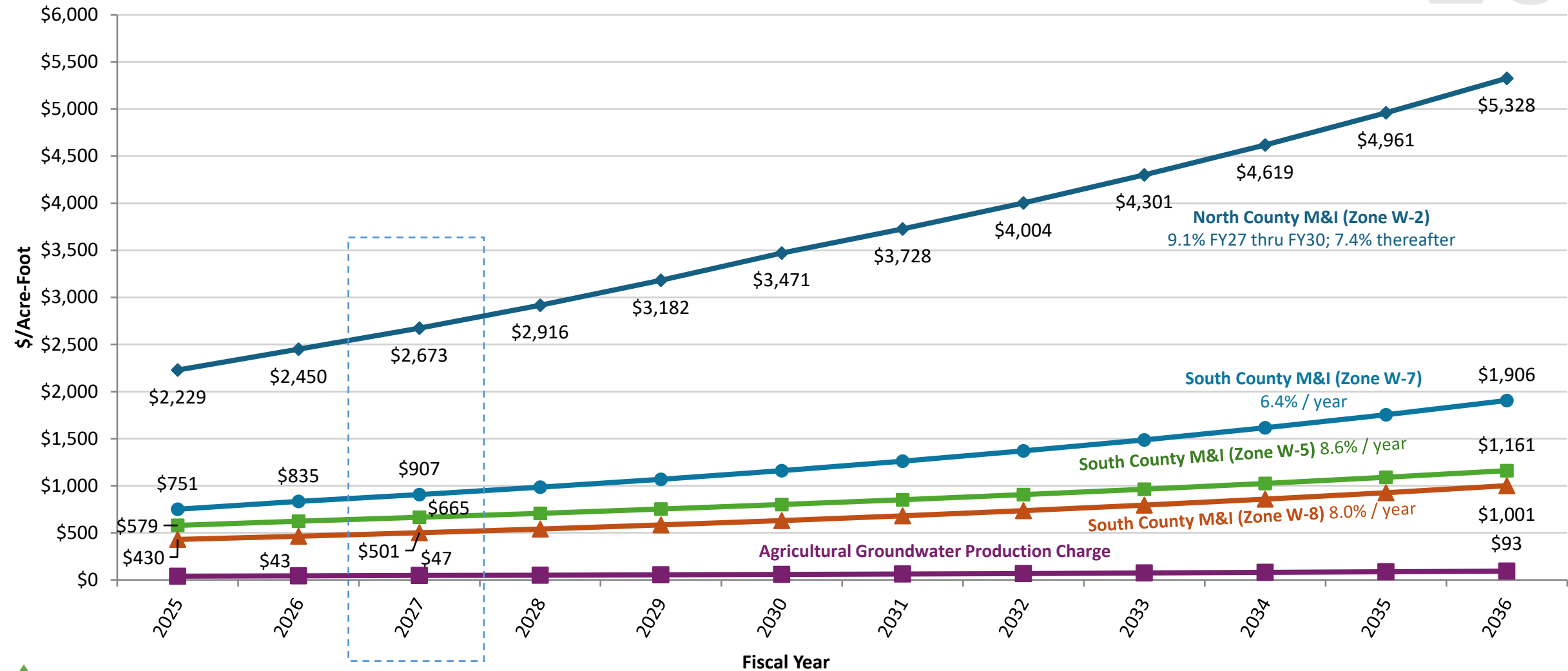
### Municipal & Industrial Groundwater Charge Year to Year Growth %

Baseline Scenario 1	FY27	FY28	FY29	FY30	FY31	FY32	FY33	FY34	FY35	FY36
North County Zone W-2	9.1%	9.1%	9.1%	9.1%	7.4%	7.4%	7.4%	7.4%	7.4%	7.4%
Prior Year	9.9%	9.9%	9.9%	9.9%	9.9%	9.9%	9.9%	9.9%	7.0%	
South County Zone W-5	6.4%	6.4%	6.4%	6.4%	6.4%	6.4%	6.4%	6.4%	6.4%	6.4%
Prior Year	7.9%	7.9%	7.9%	7.9%	7.9%	7.9%	7.9%	7.9%	7.9%	
South County Zone W-7	8.6%	8.6%	8.6%	8.6%	8.6%	8.6%	8.6%	8.6%	8.6%	8.6%
Prior Year	11.2%	11.2%	11.2%	11.2%	11.2%	11.2%	11.2%	11.2%	11.2%	
South County Zone W-8	8.0%	8.0%	8.0%	8.0%	8.0%	8.0%	8.0%	8.0%	8.0%	8.0%
Prior Year	8.0%	8.0%	8.0%	8.0%	8.0%	8.0%	8.0%	8.0%	8.0%	

# Preliminary Groundwater Production Charge Projection

## Baseline Scenario

Preliminary FY 2026-27 Groundwater Charge Projection (M&I and Ag)



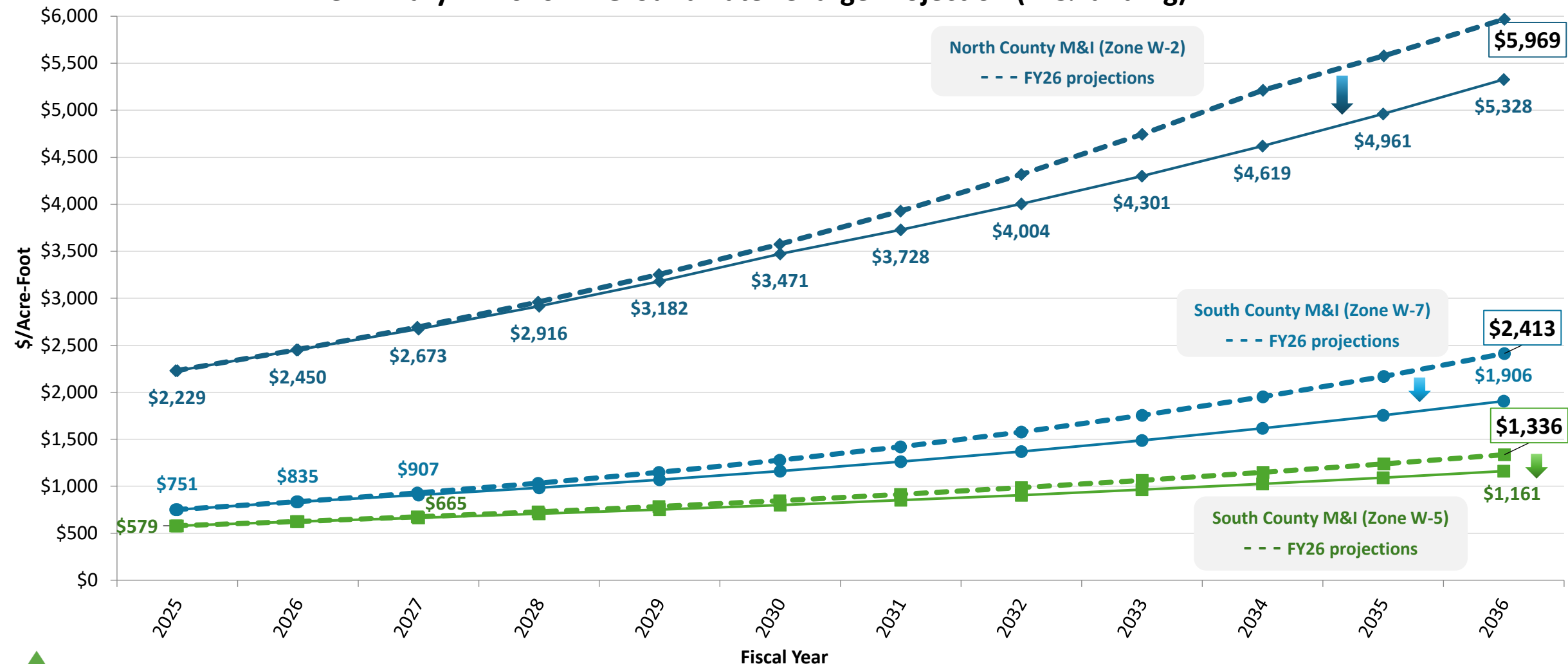
Rates (\$/AF) rounded for display purposes.



# Preliminary Groundwater Production Charge Projection

## Impact of Pacheco Reservoir Expansion Project suspension

Preliminary FY 2026-27 Groundwater Charge Projection (M&I and Ag)



# Preliminary Groundwater Charge Increase Scenarios

M&I Groundwater Charge Year to Year Growth %

North County Zone W-2		FY27	FY28	FY29	FY30	FY31	FY32	FY33	FY34	FY35	FY36
Scenario #1	Baseline	9.1%	9.1%	9.1%	9.1%	7.4%	7.4%	7.4%	7.4%	7.4%	7.4%
Scenario #2	Baseline with Expanded Sites	9.3%	9.3%	9.3%	9.3%	7.6%	7.6%	7.6%	7.6%	7.6%	7.6%

M&I Groundwater Charge – Monthly Impact To Average Household

North County Zone W-2		FY27	FY28	FY29	FY30	FY31	FY32	FY33	FY34	FY35	FY36
Scenario #1	Baseline	\$5.63	\$6.14	\$6.70	\$7.31	\$6.49	\$6.97	\$7.49	\$8.03	\$8.64	\$9.27
Scenario #2	Baseline with Expanded Sites	\$5.76	\$6.29	\$6.87	\$7.51	\$6.70	\$7.22	\$7.77	\$8.36	\$8.99	\$9.67

# Preliminary Groundwater Charge Increase Scenarios

M&I Groundwater Charge Year to Year Growth %

North County Zone W-5		FY27	FY28	FY29	FY30	FY31	FY32	FY33	FY34	FY35	FY36
Scenario #1	Baseline	6.4%	6.4%	6.4%	6.4%	6.4%	6.4%	6.4%	6.4%	6.4%	6.4%
Scenario #2	Baseline with Expanded Sites	6.5%	6.5%	6.5%	6.5%	6.5%	6.5%	6.5%	6.5%	6.5%	6.5%

M&I Groundwater Charge – Monthly Impact To Average Household

North County Zone W-5		FY27	FY28	FY29	FY30	FY31	FY32	FY33	FY34	FY35	FY36
Scenario #1	Baseline	\$1.01	\$1.07	\$1.14	\$1.21	\$1.29	\$1.38	\$1.46	\$1.55	\$1.65	\$1.77
Scenario #2	Baseline with Expanded Sites	\$1.02	\$1.09	\$1.16	\$1.24	\$1.31	\$1.40	\$1.49	\$1.59	\$1.69	\$1.81

# Preliminary Groundwater Charge Increase Scenarios

20

## M&I Groundwater Charge Year to Year Growth %

North County Zone W-7		FY27	FY28	FY29	FY30	FY31	FY32	FY33	FY34	FY35	FY36
Scenario #1	Baseline	8.6%	8.6%	8.6%	8.6%	8.6%	8.6%	8.6%	8.6%	8.6%	8.6%
Scenario #2	Baseline with Expanded Sites	8.9%	8.9%	8.9%	8.9%	8.9%	8.9%	8.9%	8.9%	8.9%	8.9%

## M&I Groundwater Charge – Monthly Impact To Average Household

North County Zone W-7		FY27	FY28	FY29	FY30	FY31	FY32	FY33	FY34	FY35	FY36
Scenario #1	Baseline	\$1.82	\$1.97	\$2.13	\$2.32	\$2.53	\$2.74	\$2.98	\$3.23	\$3.51	\$3.81
Scenario #2	Baseline with Expanded Sites	\$1.88	\$2.05	\$2.22	\$2.42	\$2.64	\$2.88	\$3.13	\$3.41	\$3.71	\$4.04

# Preliminary Groundwater Charge Increase Scenarios

## M&I Groundwater Charge Year To Year Growth %

South County Zone W-8	FY27	FY28	FY29	FY30	FY31	FY32	FY33	FY34	FY35	FY36
Baseline and all Scenarios	8.0%	8.0%	8.0%	8.0%	8.0%	8.0%	8.0%	8.0%	8.0%	8.0%

## M&I Groundwater Charge – Monthly Impact To Average Household

South County Zone W-8	FY27	FY28	FY29	FY30	FY31	FY32	FY33	FY34	FY35	FY36
Baseline and all Scenarios	\$0.93	\$1.01	\$1.09	\$1.19	\$1.26	\$1.36	\$1.49	\$1.62	\$1.74	\$1.87

# Agricultural Groundwater Charges

22

## Agricultural Groundwater Charge Year To Year Growth %

Agricultural Rate	FY27	FY28	FY29	FY30	FY31	FY32	FY33	FY34	FY35	FY36
Baseline and all Scenarios	8.0%	8.0%	8.0%	8.0%	8.0%	8.0%	8.0%	8.0%	8.0%	8.0%

## M&I Groundwater Charge – Monthly Impact To Average User\*

Agricultural Rate	FY27	FY28	FY29	FY30	FY31	FY32	FY33	FY34	FY35	FY36
Baseline and all Scenarios	\$0.58	\$0.58	\$0.67	\$0.75	\$0.75	\$0.83	\$0.92	\$1.00	\$1.08	\$1.17

\* Assumes 2 acre-feet of water usage per acre per year

## District Act limits Agricultural Water Charges to 25% of M&I Water charges

- Board Pricing Policy (Resolution 99-21) further limits Agricultural Water Charges to 10% of M&I Water Charges

## Board Direction in FY 22

- Maintain full Open Space Credit, keeping Ag rates set at [or under] 10% of lowest M&I charge

# Other Charges, Taxes, Reserves Information

23

	FY 2026	FY 2027	FY 2028
<u>Other Charges</u>	<u>Budget</u>	<u>Projection</u>	<u>Projection</u>
Contract TW Surcharge (\$/AF)	\$115.00	\$115.00	\$115.00
Non-contract TW Surcharge (\$/AF)	\$200.00	\$200.00	\$200.00
Surface Water Master Charge (\$/AF)	\$67.00	\$73.00	\$79.50
Agricultural Groundwater Charge (\$/AF)	\$43.00	\$46.50	\$50.00
<u>SWP Tax</u>			
Revenue	\$28M	\$28M	\$28M
Cost per average household	\$42/Yr.	\$42/Yr.	\$42/Yr.
<u>Reserves</u>			
Supplemental Water Reserve	\$8.7M	\$12.1M	\$15.5M
Drought Reserve	\$1.0M	\$4.0M	\$8.0M
Rate Stabilization Reserve	\$40.5M	\$42.9M	\$47.8M
Operating and Capital Reserve	\$74.6M	\$61.4M	\$63.2M

# Rate Setting Schedule FY 2026-27

24

- Jan 5                    Agricultural Water Advisory Committee
- Jan 13                Board Meeting: Preliminary Groundwater Charge Analysis
- Jan 21                Water Retailers Meeting: Preliminary Groundwater Charge Analysis
- Jan 28                Water Commission Meeting: Preliminary Groundwater Charge Analysis

---

- Feb 10                Board Meeting: Set time & place of Public Hearing
- Feb 27                Mail notice of public hearing and file PAWS report

---

- Mar 10                Board Meeting: Budget development update
- Mar 18                Water Retailers Meeting: FY 27 Groundwater Charge Recommendation

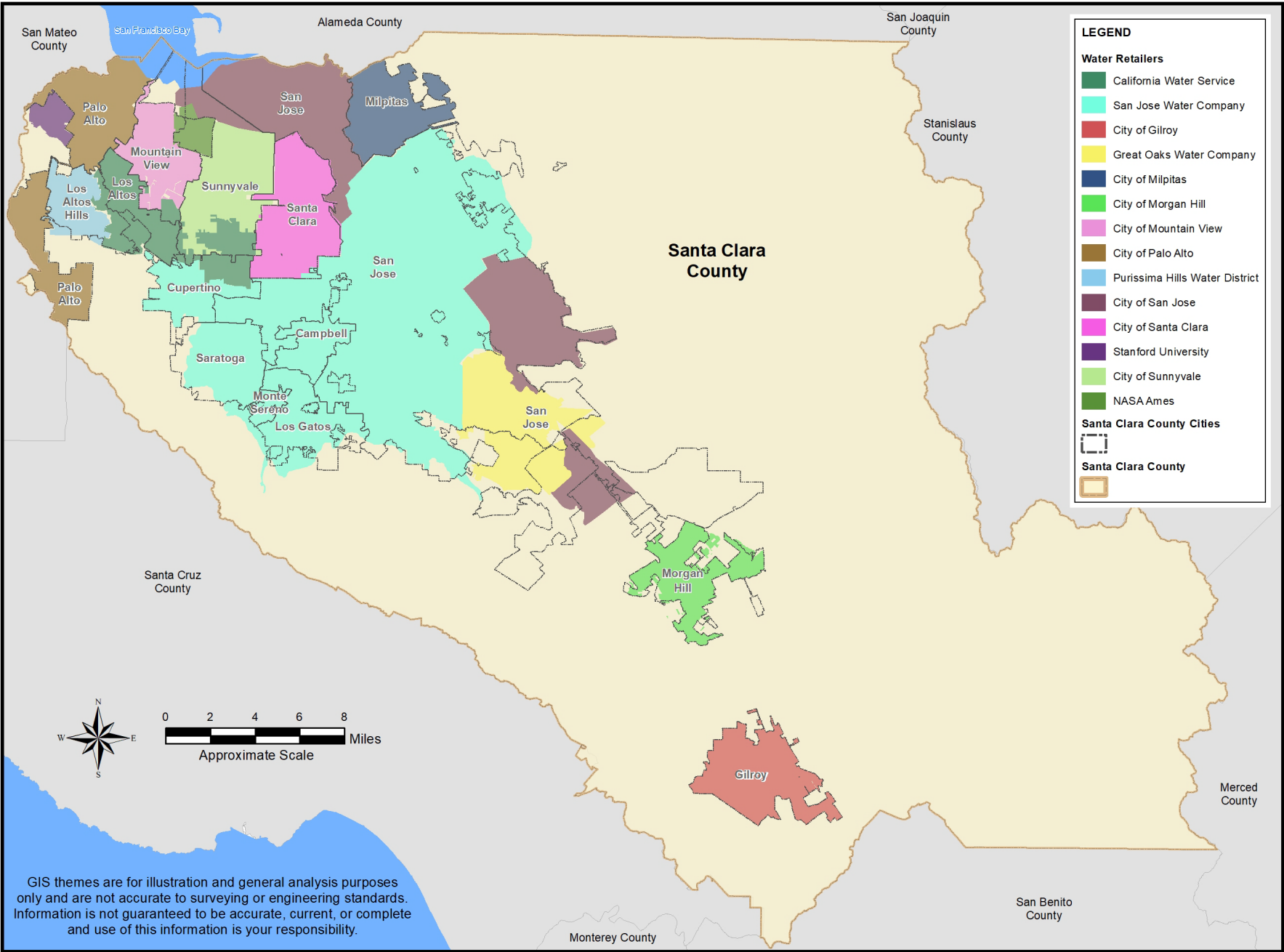
---

- Apr 6                 Agricultural Water Advisory Committee
- Apr 8                 Water Commission Meeting
- Apr 14                Open Public Hearing
- Apr 16                Continue Public Hearing in South County
- Apr 28                Conclude Public Hearing
- Apr 29-30            Board Meeting: Budget work study session

---

- May 12                Adopt budget, 5-Year CIP & groundwater production and other water charges

# Water Retailers in Santa Clara County



GIS themes are for illustration and general analysis purposes only and are not accurate to surveying or engineering standards. Information is not guaranteed to be accurate, current, or complete and use of this information is your responsibility.



## COMMISSION ACTIONS TODAY

- 1. Discuss Fiscal Year 2026-27 Preliminary Groundwater Production Charges**
- 2. Provide Comment to the Board as Desired**