



Upper Guadalupe River Project Implementation Strategy

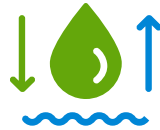
April 20, 2026 CIP Committee

Presented by: Erin Baker

OVERVIEW



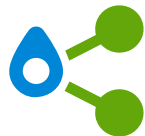
Project Objectives



Current Capacity



History and Status Update



Project Implementation Strategy



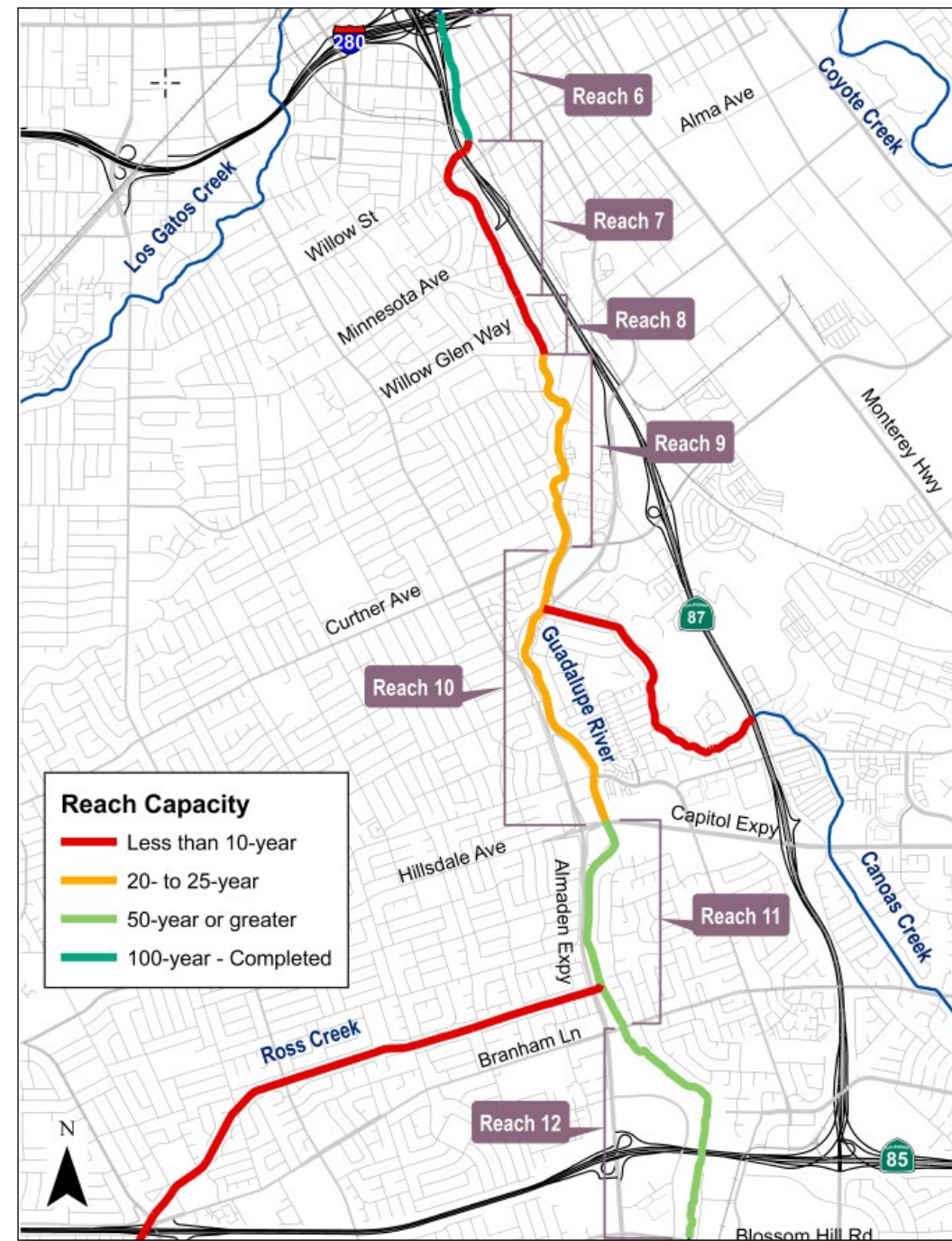
Next Steps and Questions

Project Objectives

- Design and construct improvements along 5.5 miles of channel extending from Interstate 280 to Blossom Hill Road.
- The Safe, Clean, Water and Natural Flood Protection Program Key Performance Indicators (KPIs) are:
 - ***With Federal Funding:*** Provide 1% (100-year) flood protection to 6,280 homes, 320 businesses and 10 schools and institutions.
 - ***Local Funding Only:*** Flood protection improvements along 4,100 feet between the Southern Pacific Railroad (SPRR) crossing, downstream of Willow Street, to the Union Pacific Railroad (UPRR) crossing, downstream of Padres Drive.
 - **This section is known as Reach 7**, the most downstream reach of the project
 - Local Funding Only Project alone **does not provide 1% (100-year)** flood protection

Current Capacity by Reach

- Reaches with highest flood risk have less than 10-year capacity:
 - Reach 7
 - Reach 8
 - Canoas
 - Ross
- Largest flood on record was a 20-year event in 1995
- Remainder of channel has capacity for a 20-year event or greater



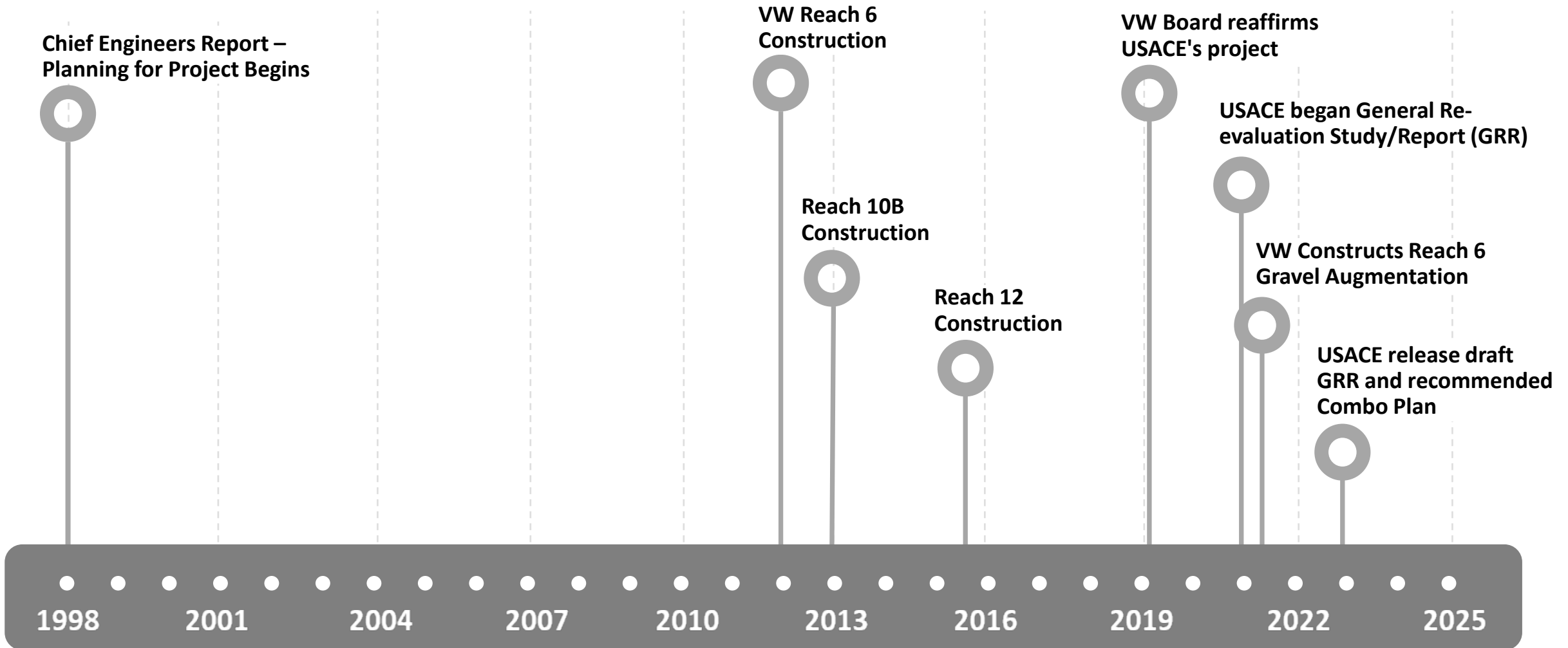
Guadalupe River Direction of Flow

Canoas

Ross

4

Project History



Completed Elements for 100-year Project

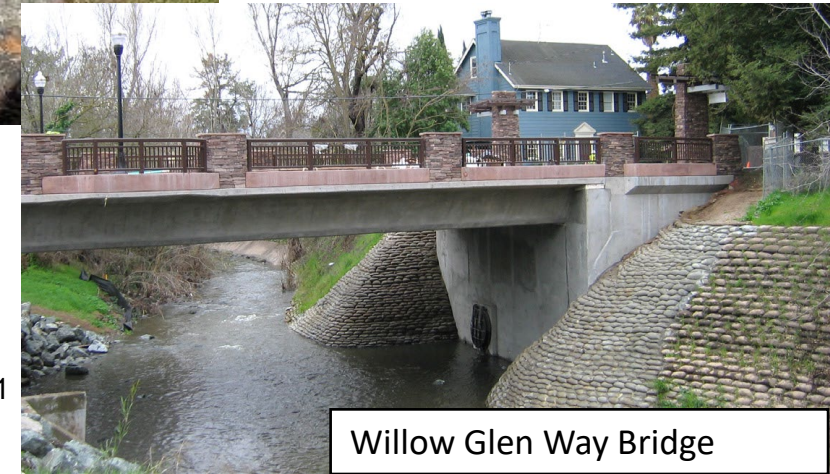
- Valley Water has invested \$114 Million in:
 - 100-year protection for Reach 6
 - Required mitigation in Reaches 6, 10 and 12
 - Willow Glen Way bridge
 - Real estate acquisition
- Reimbursements received:
 - \$31 Million state subventions
 - \$4.5 Million cost-share from City of San Jose



Reach 6 Channel Widening



Reach 10 Bank Flattening



Willow Glen Way Bridge

Remaining Elements for 100-year Project

7

- Reaches 7 – 12:

- Widening, floodplain benches, slope protection, intermittent floodwalls and levees
- Four Bridges: Willow St, Alma Ave, Abandoned UPRR, CalTrain*

- Canoas:

- Continuous floodwalls
- Two Culverts: Nightengale Dr, Almaden Rd

- Ross:

- Intermittent floodwalls
- Five Culverts: Almaden Expy, Cherry Ave, Jarvis Ave, Meridian Ave, Kirk Rd



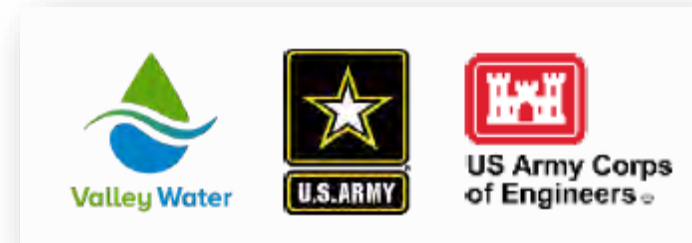
USACE Status Update

- USACE has recently informed Valley Water that **additional federal funding will not be provided** to complete the General Re-evaluation Report (GRR)
 - Nationwide funding limitations for planning studies
 - USACE estimated \$3 to 7 Million to complete GRR
- The USACE **study authorization remains open**

Project Implementation Strategy

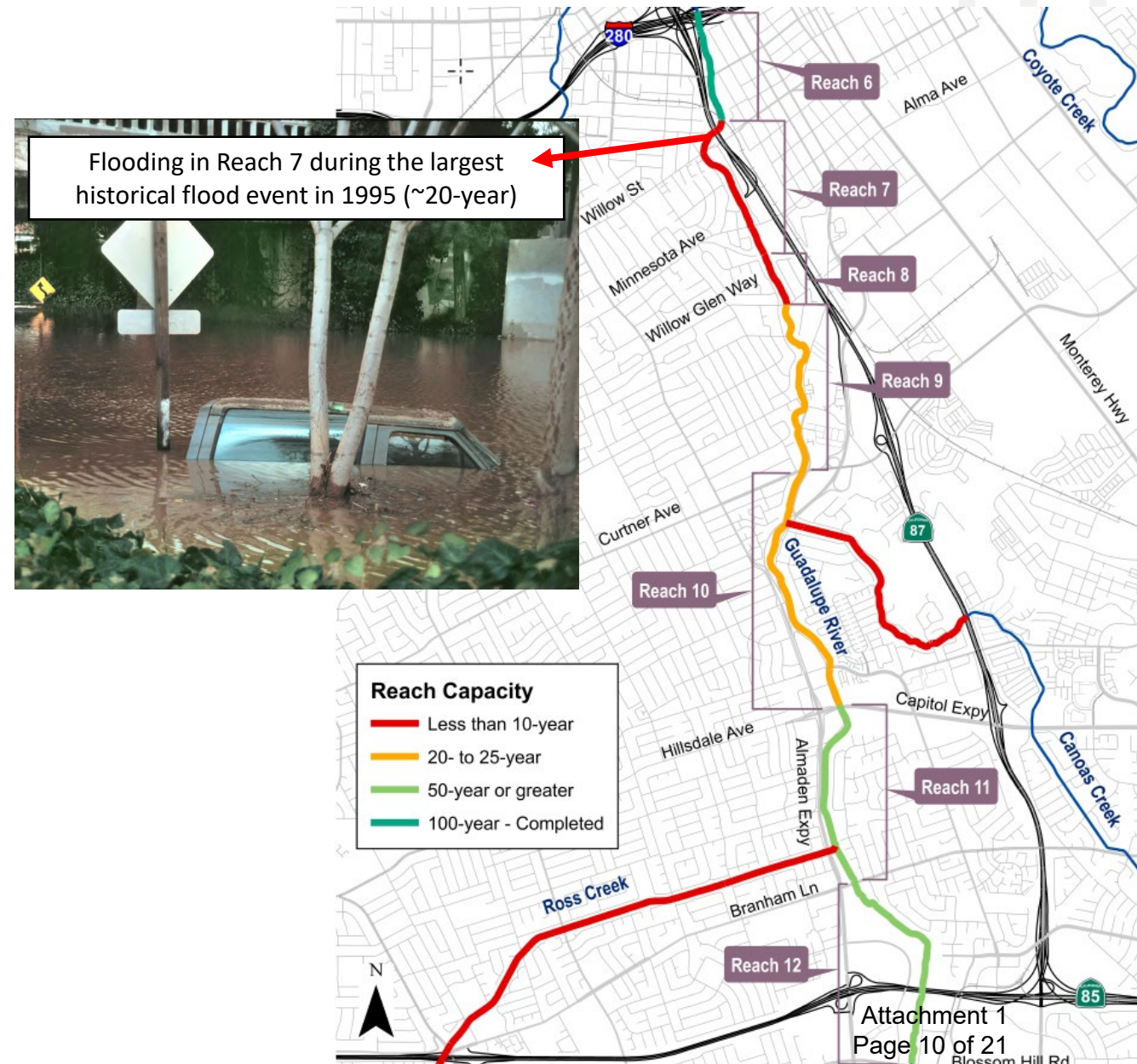
Pursue multiple paths concurrently:

1. Evaluate options for smaller scope project to reduce risk
2. Continue partnership with USACE on 100-year project
3. Continue flood awareness campaign



1. Evaluate Options for Smaller Scope Project to Reduce Risk

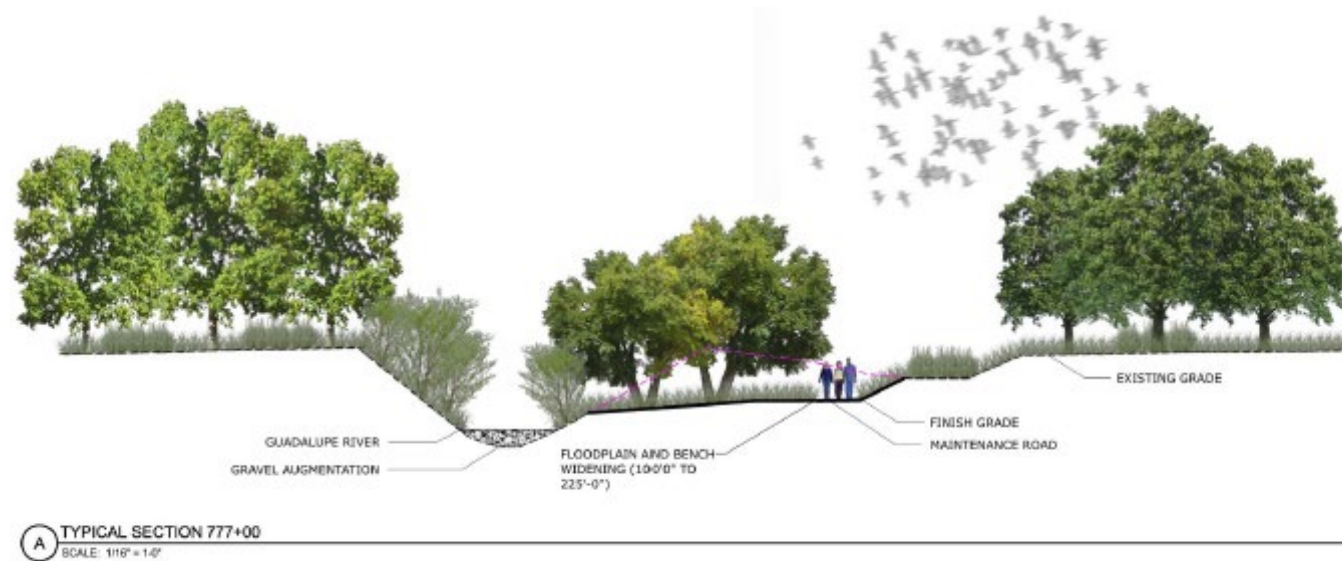
- Protect against a flood event equivalent to the 1995 flood (~20-year flood event)
- Reaches 7 & 8, Canoas & Ross are below 10-year capacity
- Reaches 9-12 are already at or above 20-year capacity
- Aligns with overall strategy for Watershed Capital Program



2. Continue Partnership with USACE on 100-year Project

11

- Valley Water completes feasibility study under USACE Section 203
- Maintains eligibility for additional state subventions reimbursements
 - Up to 70% of additional real estate and utility relocation costs
- Potential future federal construction funding for 100-year project

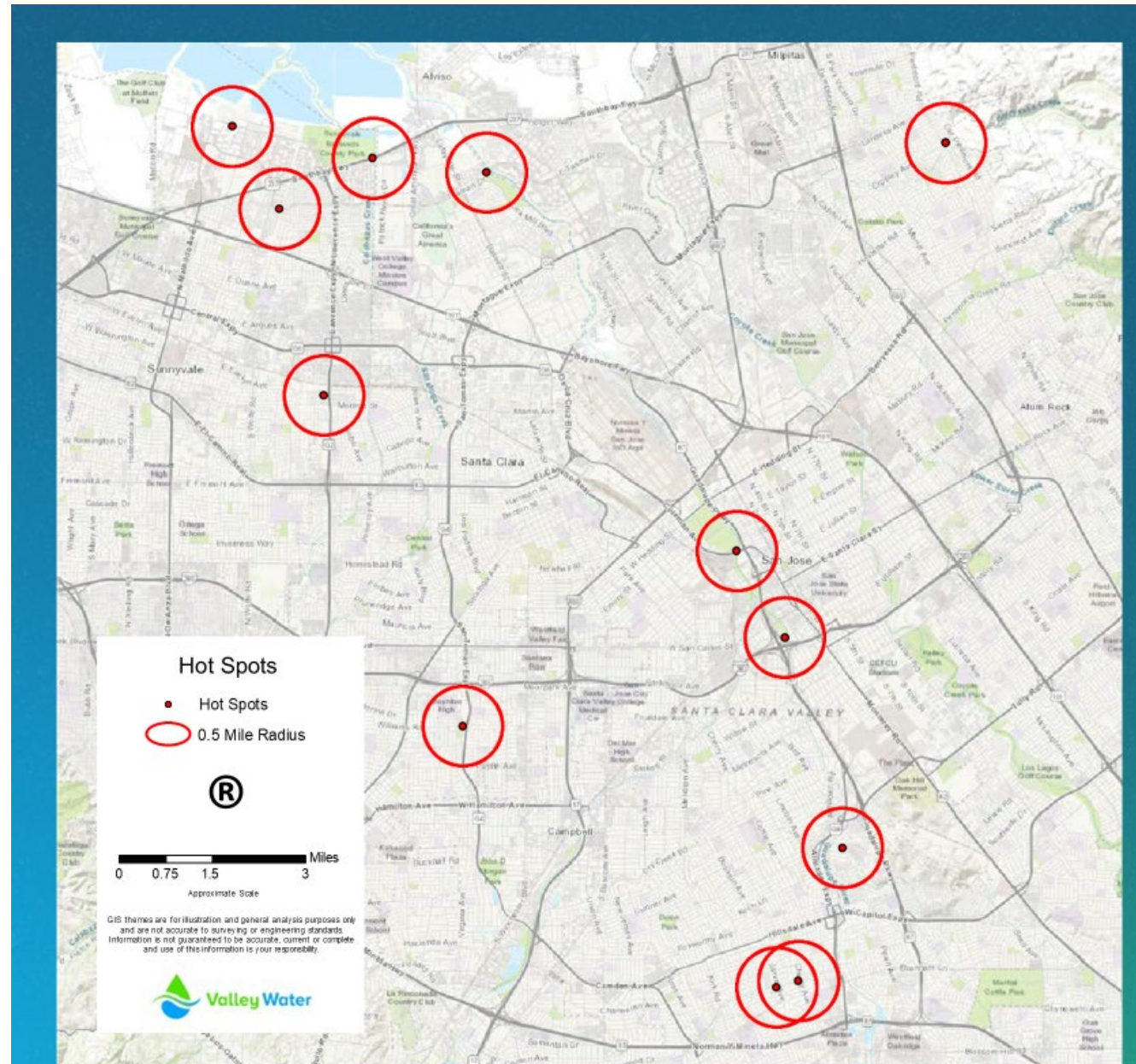


3. Continue Flood Awareness Campaign

12

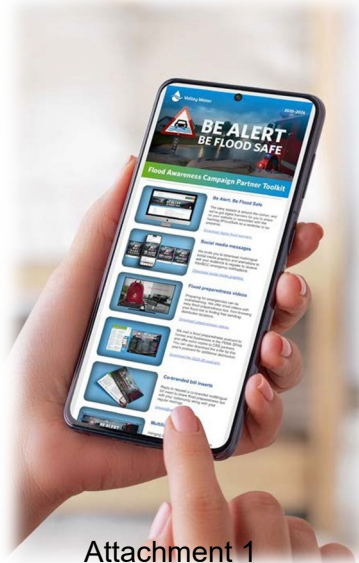


Map of Santa Clara County Flooding Hot Spots



Flood Awareness Campaign Key Tactics

- Localized Direct Mail
- Digital and Geotargeted Advertising
- Outdoor and Transit Advertising
- Movie Theater Advertising
- Community Engagement Toolkit
- Ethnic Media Outreach
- Joint Press Conference
- Emergency Manager’s Coordination
- VOAD Partnership



Next Steps

- Evaluate options for smaller scope project to reduce risk
 - Present staff recommendations to CIP Committee in **Summer 2027**
- Continue partnership with USACE
 - Initiate Section 203 Feasibility Study
- Continue flood awareness outreach



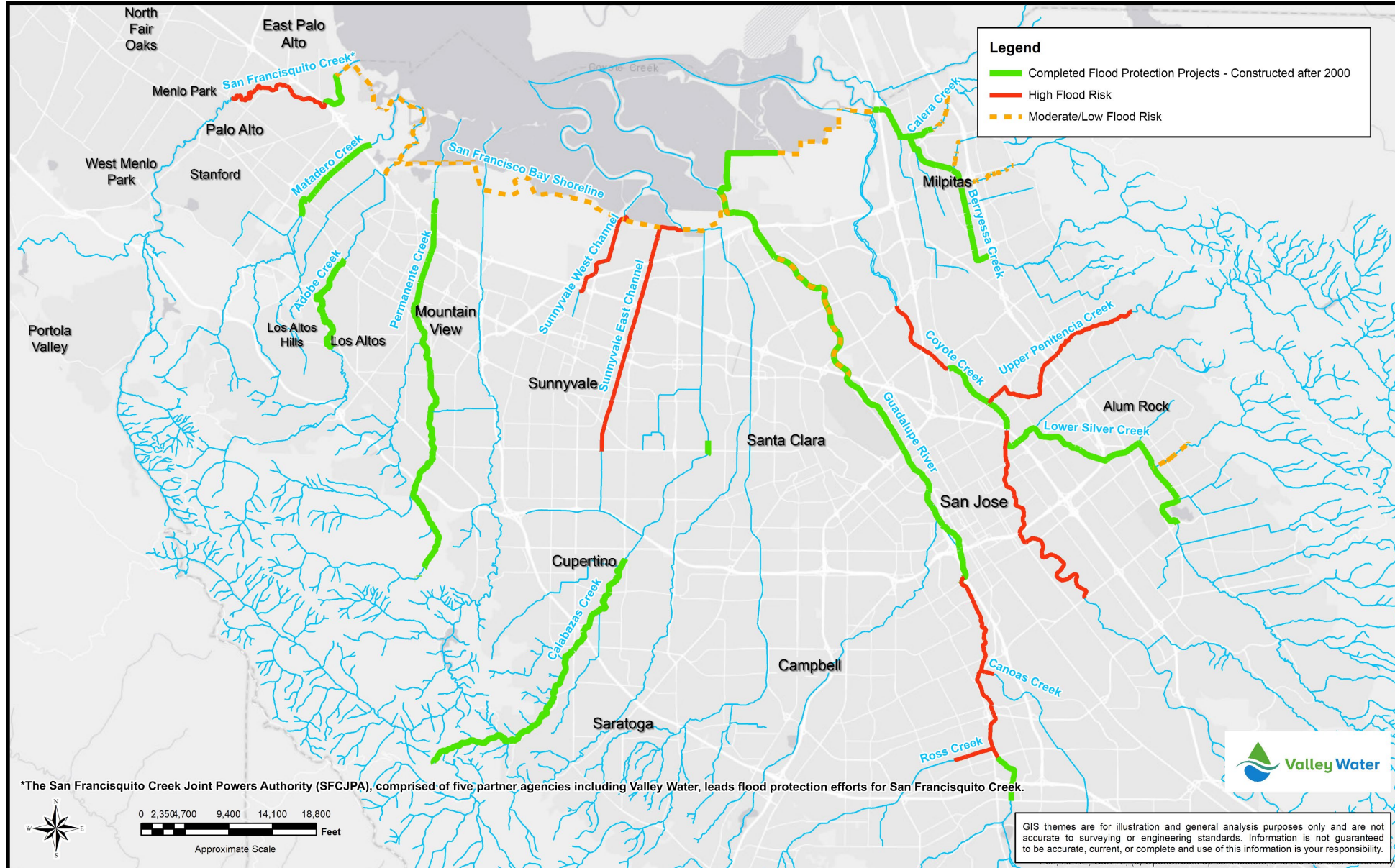


Valley Water

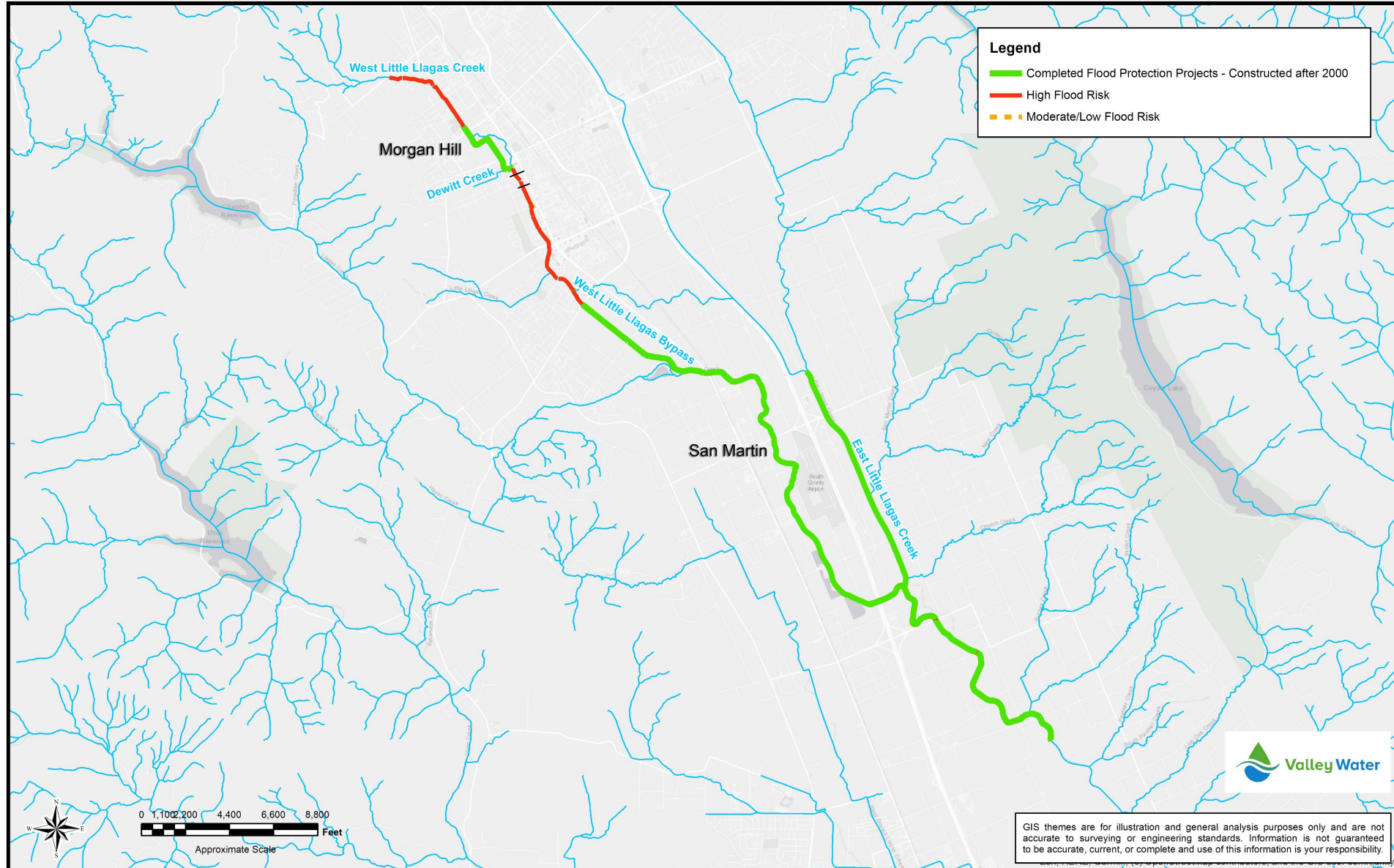
Clean Water • Healthy Environment • Flood Protection

Backup Slides

Flood Risk Reduction: North County



Flood Risk Reduction: South County



Safe Clean Water Funding Principles

- **Countywide Parcel Tax:** revenues are not earmarked for or distributed by city
 - Revenues must support voter-approved priorities only
- **Voter-approved priorities:** Valley Water is committed to completing 31 capital and operating projects under 6 priorities
- **Project cost estimates:** are estimates not earmarks
 - Unless...financial commitment is specified in KPI
- **Supplemental Funding:** provided by Watershed Stream Stewardship (WSS) and Water Utility (WU) funds for many projects

Safe Clean Water Funding Principles cont...

21

- **Project Modifications:** Board may adjust a project's schedule, scope, or cost, or cancel a project in response to economic, policy or regulatory conditions
 - Must follow the SCW Change Control Process
 - Staff use risk-based prioritization tools to support recommendations
 - Decisions captured in CIP plans, 5-Year SCW Implementation Plan, & Adopted Budget
- Excess funds from canceled or completed projects **return to SCW fund reserves**, not to specific cities
- Board allocates funds based on countywide priorities and highest risks, not geography

THIS PAGE INTENTIONALLY LEFT BLANK