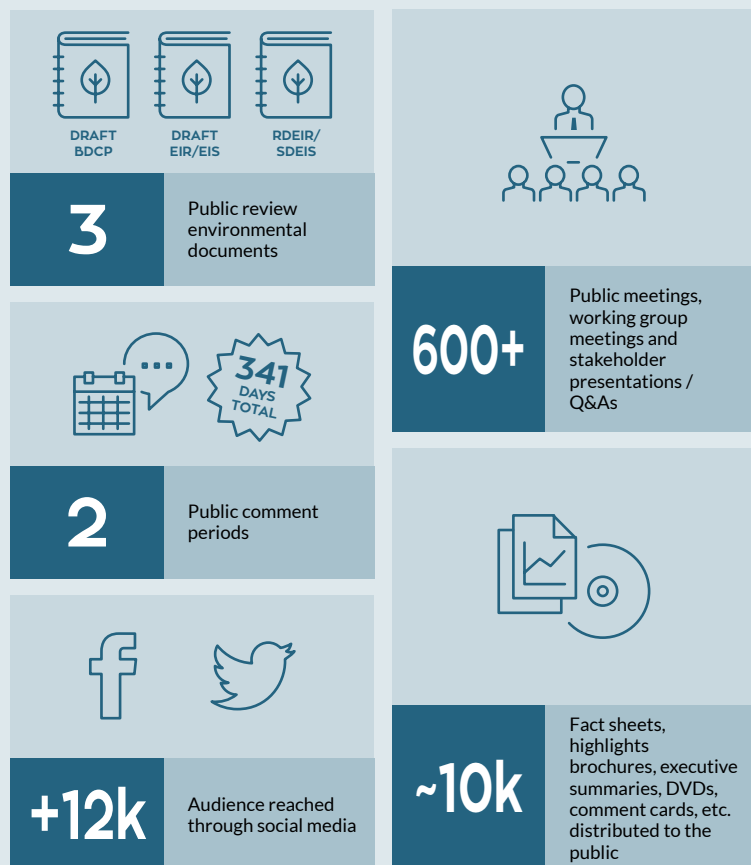


PROGRESS CONTINUES IN SECURING WATER SUPPLIES AND PROTECTING THE DELTA'S ECOSYSTEM

The California Natural Resources Agency has been working with state and federal agencies since 2006 on a plan to secure California's water supplies and improve the Sacramento-San Joaquin Delta's (Delta) ecosystem. In 2015, Governor Jerry Brown announced a major change for the project formerly known as the Bay Delta Conservation Plan (BDCP). The lead state and federal agencies shifted their focus from a habitat conservation plan to permitting, design, and construction of a Delta conveyance facility (California WaterFix), with the majority of ecosystem restoration work now occurring under a separate program, California EcoRestore. California WaterFix maintains the co-equal goals of increasing statewide water supply reliability and, in coordination with California EcoRestore, facilitating increased habitat restoration in the Delta.

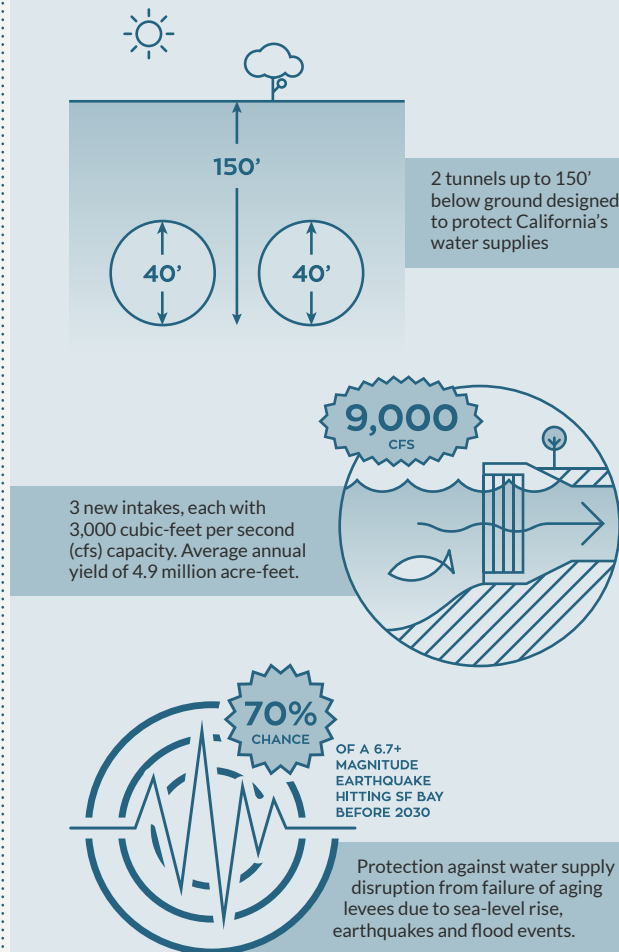
Although much work remains to reach final project approval, an unprecedented level of public review, comment, and scientific input has helped refine and improve California WaterFix. The following is a snapshot of major milestones that have assisted in enhancing the proposed project.

PUBLIC INVOLVEMENT & INPUT



A full suite of online information – videos, animations, webinars, frequently asked questions, multilingual materials, toll-free hotline, and brochures – available at www.baydeltaconservationplan.com and www.californiawaterfix.com

PROPOSED WATER DELIVERY UPGRADE



2015

OCTOBER

'15

Close of Recirculated Draft Environmental Impact Report/Supplemental Draft Environmental Impact Statement (RDEIR/SDEIS) Public Review Period

+6,200 UNIQUE COMMENT
LETTERS RECEIVED

SEPTEMBER

'15

California Department of Water Resources (DWR) submits Section 404 Permit application to U.S. Army Corps of Engineers

More Info on Section 404 Permit

New fact sheet outlines how the proposed California WaterFix would benefit the Delta's native fish

Securing Solutions for the Sacramento-San Joaquin
Delta's Native Fish Fact Sheet

AUGUST

'15

DWR and U.S. Bureau of Reclamation (Reclamation) submit change petition to State Water Resources Control Board

SWRCB Fact Sheet

DWR releases revised information regarding parcels potentially impacted by the project; reduced number of permanent and surface impacts

Facts about Parcels Potentially Impacted
by California WaterFix

JULY

'15

DWR and Reclamation hold two public open house meetings in Sacramento and Walnut Grove to collect comments on the RDEIR/SDEIS and answer questions

370 PEOPLE IN
ATTENDANCE

Publication of new Conceptual Engineering Report (CER) with engineering and design details for redesigned Modified Pipeline Tunnel Option - Clifton Court Forebay Pumping Plant

CER

Visual animations depicting proposed design changes and Delta flows released

Delta Flow Animation

Intakes Animation

Clifton Court Forebay
Animation

RDEIR/SDEIS Public Comment Period extended 60 days

Press Release

RDEIR/SDEIS available for public review and comment

RDEIR/SDEIS Fast Facts

RDEIR/SDEIS Frequently
Asked Questions

APRIL

'15

Governor Brown announces California WaterFix as joint state and federal preferred alternative and unveils plans to accelerate restoration of the Delta's ecosystem through California EcoRestore

Protecting Water Supplies
Protecting Fish Fact Sheet

State of the Art Solution Fact Sheet

Refined Tunnel Option
& Intake Fact Sheet

California EcoRestore Fact Sheet

California WaterFix Website

California WaterFix /
California EcoRestore FAQs

2014

DECEMBER

'14

Further refinements made to conveyance facilities to reduce impacts. Proposed changes include eliminating pumping plants at north Delta intakes and consolidating at Clifton Court Forebay; reduced construction impacts to Delta communities; improved tunnel reliability and operation

NEWSLETTER: Additional
Refinements to Proposed Water
Delivery Facility Reduce Impacts

BDCP: Expanding Greater Sandhill
Crane Habitat Fact Sheet

Modified Tunnel Option
Fact Sheet



OCTOBER

'14

DWR landowner liaisons begin communication with all impacted landowners regarding the right-of-way process as it relates to field studies (for the environmental impact analysis) and temporary easements needed for geotechnical drilling



SEPTEMBER

'14

A series of meetings conducted between September 2014 and February 2015 with over 75 local residents, elected officials, Cooperating and Responsible agencies, and other interested parties to gather input and feedback on proposed facility design changes and how to minimize potential impacts from the proposed design optimization

VISUAL SIMULATION:
Modified Intake #3

VISUAL SIMULATION:
Modified Clifton Court
Pumping Facility



JULY 2012 - AUGUST 2014

[Click here for the "Progress In Achieving the Co-Equal Goals" Fact Sheet covering project highlights from July 2012 to August 2014](#)