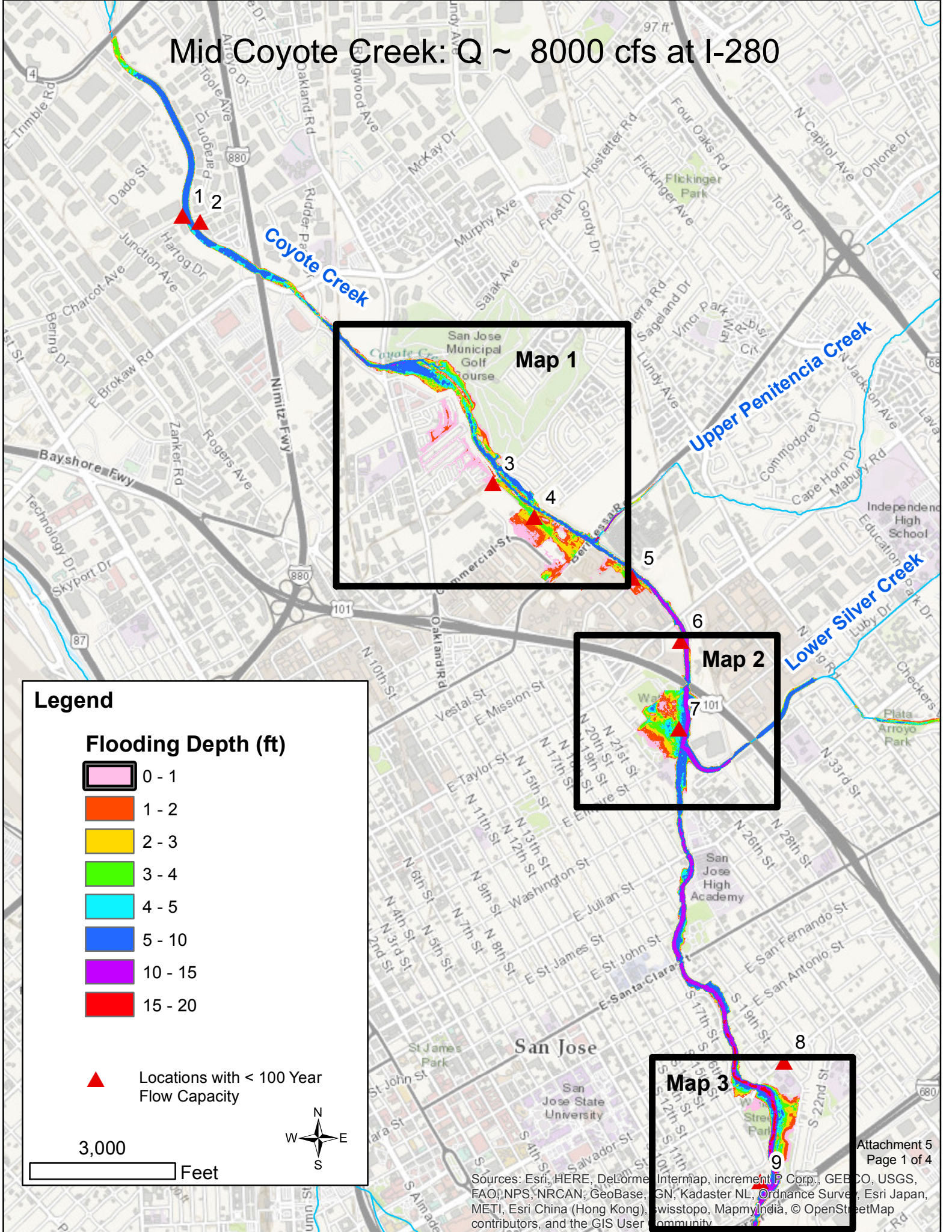


Mid Coyote Creek: Q ~ 8000 cfs at I-280



Legend

Flooding Depth (ft)

- 0 - 1
- 1 - 2
- 2 - 3
- 3 - 4
- 4 - 5
- 5 - 10
- 10 - 15
- 15 - 20

▲ Locations with < 100 Year Flow Capacity

3,000 Feet

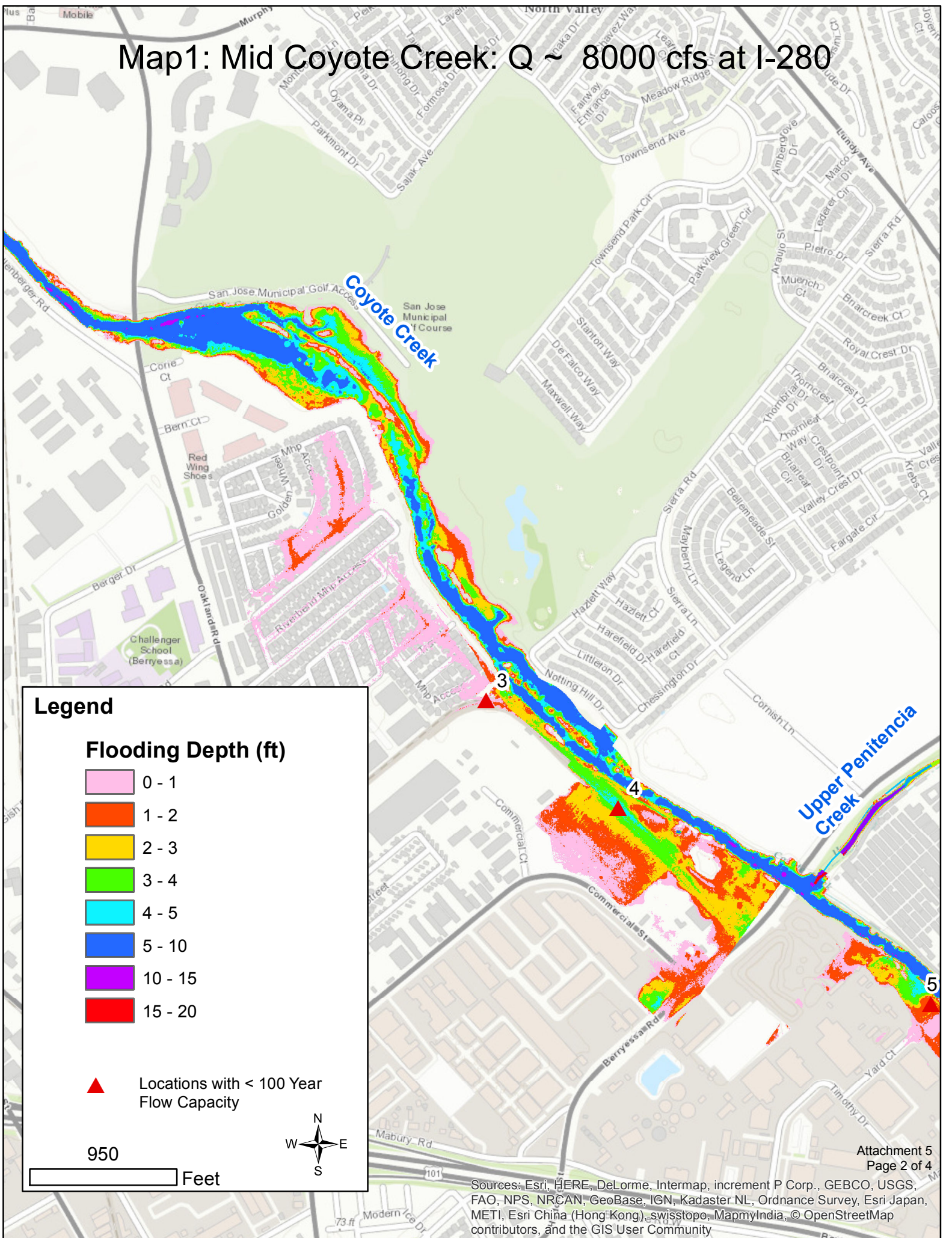


Map 1

Map 2

Map 3

Map1: Mid Coyote Creek: Q ~ 8000 cfs at I-280



Legend

Flooding Depth (ft)

- 0 - 1
- 1 - 2
- 2 - 3
- 3 - 4
- 4 - 5
- 5 - 10
- 10 - 15
- 15 - 20

▲ Locations with < 100 Year Flow Capacity

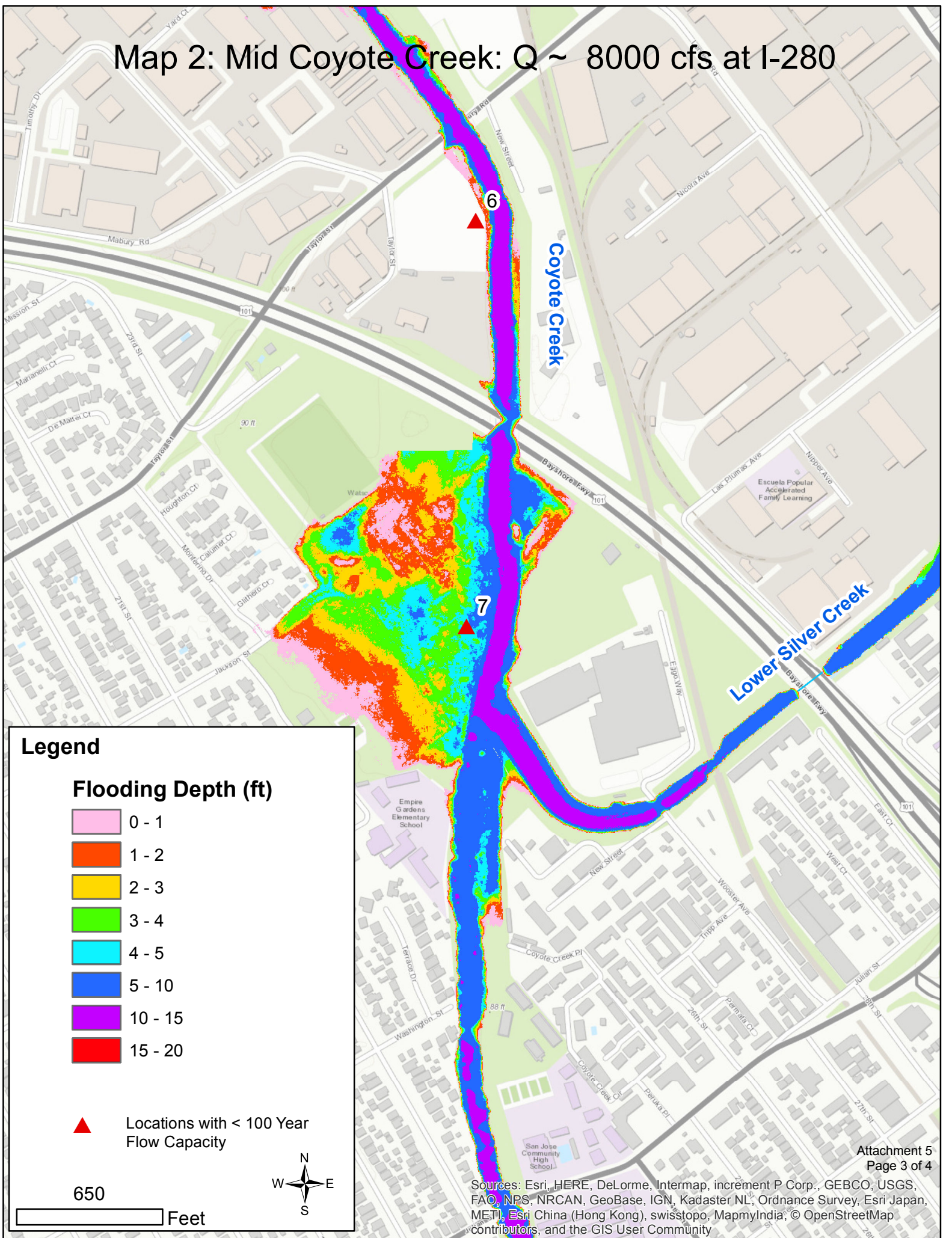
950 Feet

N

W + E

S

Map 2: Mid Coyote Creek: Q ~ 8000 cfs at I-280



Legend

Flooding Depth (ft)

- 0 - 1
- 1 - 2
- 2 - 3
- 3 - 4
- 4 - 5
- 5 - 10
- 10 - 15
- 15 - 20

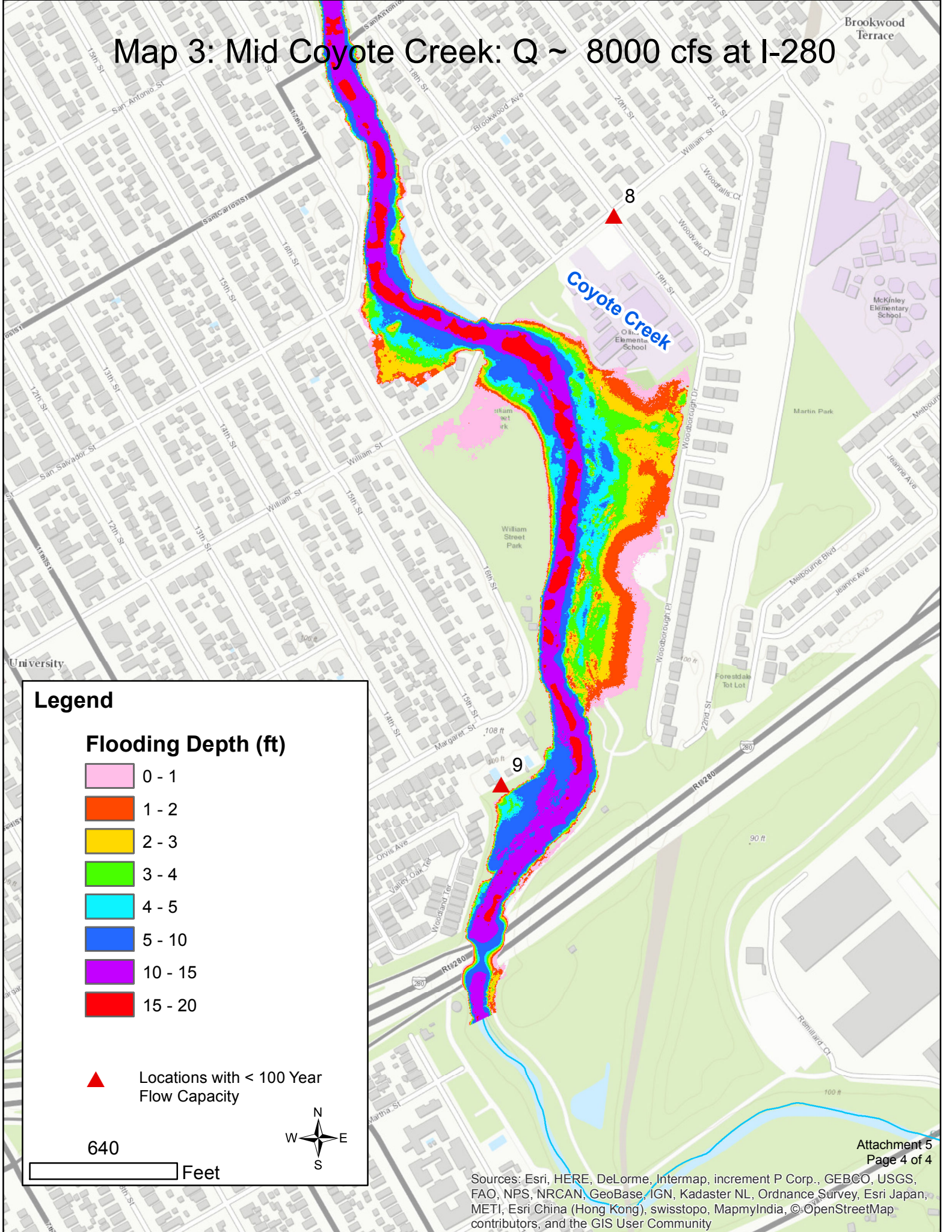
Locations with < 100 Year Flow Capacity

650

Feet



Map 3: Mid Coyote Creek: Q ~ 8000 cfs at I-280



Legend

Flooding Depth (ft)

- 0 - 1
- 1 - 2
- 2 - 3
- 3 - 4
- 4 - 5
- 5 - 10
- 10 - 15
- 15 - 20

Locations with < 100 Year Flow Capacity

640 Feet

N
W E
S