

Emergency Services Coordination



Flooding Sunnyvale E. Channel, Dec. 2012

Near Caribbean Drive



Response Structure

Incident Command System (ICS)

Standardized Emergency Management System (SEMS)

National Incident Management System (NIMS)

Emergency Operations Center (EOC)

Department Operation Centers (DOCs)

Based on Watershed and Water Utility functions



Potential Emergencies (examples)

Watershed

- ▶ Flooding
- ▶ Levee or other facility issue

Water Utility

- ▶ Water contamination
- ▶ Water supply disruption
- ▶ Pipeline damage
- ▶ Land subsidence

Water Utility and Watershed

- ▶ Dam Failure
- ▶ Earthquake



Communication and Notification

How does the Water District communicate with Cities and County?

- Operational Area Calls
- Direct communication, emergency managers
- Written Communications

Stream and Reservoir Monitoring

- Hydrology, Hydraulics and Geomorphology Unit
- Automated Local Evaluation in Real Time (ALERT)



Resources (personnel)



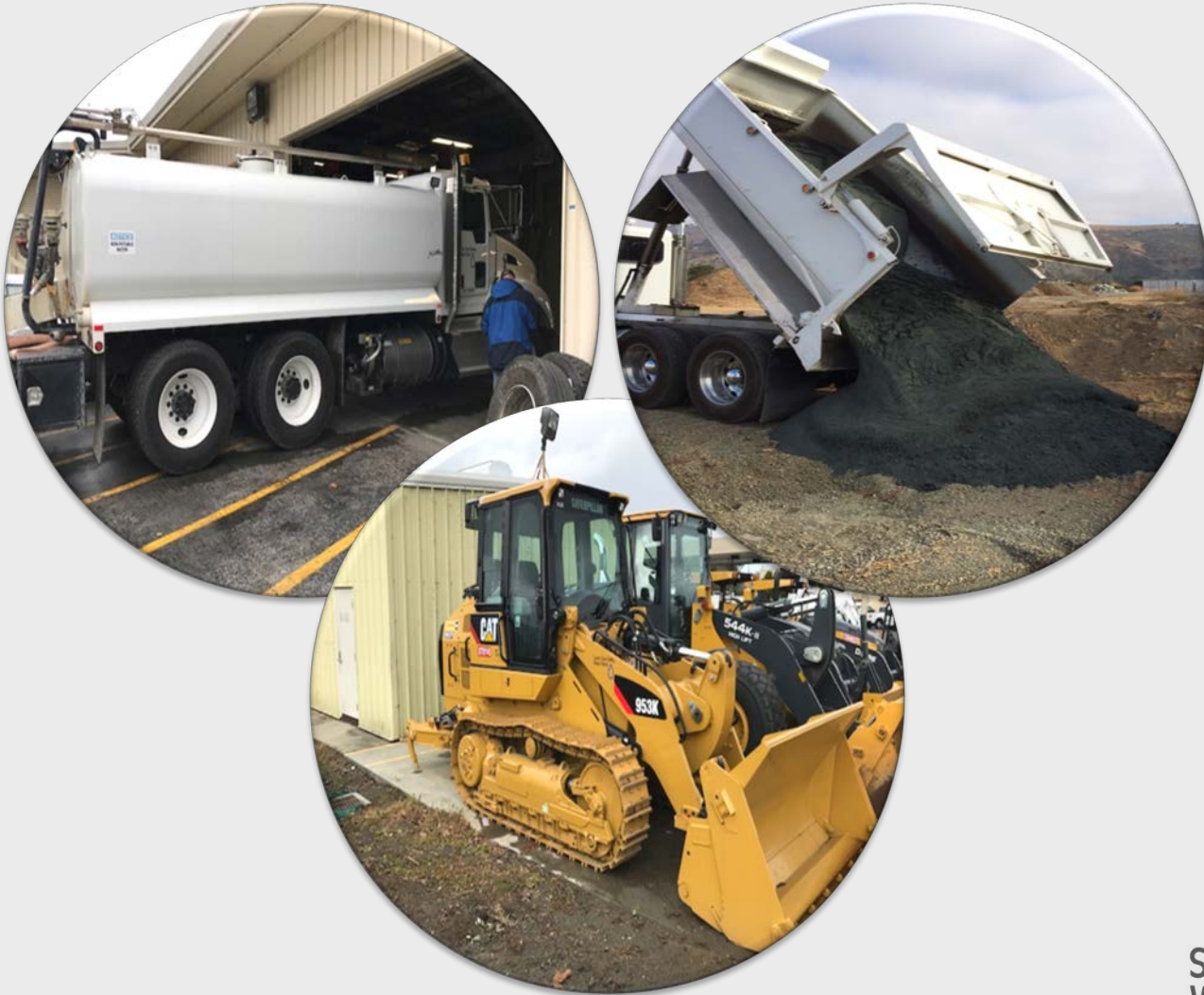
- ▶ 160+ assigned to EOC
- ▶ Technical Experts (Watershed and Water Utility)
- ▶ Public Information Branch
 - ▶ Communication redundancy

Resources (equipment)

- ▶ Excavators
- ▶ Dump Trucks
- ▶ Loaders
- ▶ Excavators
- ▶ Cranes
- ▶ More



Resources (equipment)



Emergency Action Plans (EAPs)

- ▶ Scenario Specific – streams, dams, locations
- ▶ Inundation Maps and Downstream Contact Lists
- ▶ Activation Levels, scenario data and monitoring
- ▶ Lessons Learned from 2017 flood
- ▶ Multi-Agency Coordination (MAC)
- ▶ Coordination with Emergency Operations Plan (EOP)



Emergency Services and Security Unit

- Manager, 5 staff assigned to emergency services within unit
- Emergency Planning, Training and Exercise
- EOC Readiness
- City and County Collaboration and Coordination

