

Upper Llagas Creek Flood Protection Project

Agricultural Water Advisory Committee, January 5, 2026

Llagas Creek in 1895

Historic Ecology SFEI



Flooding History

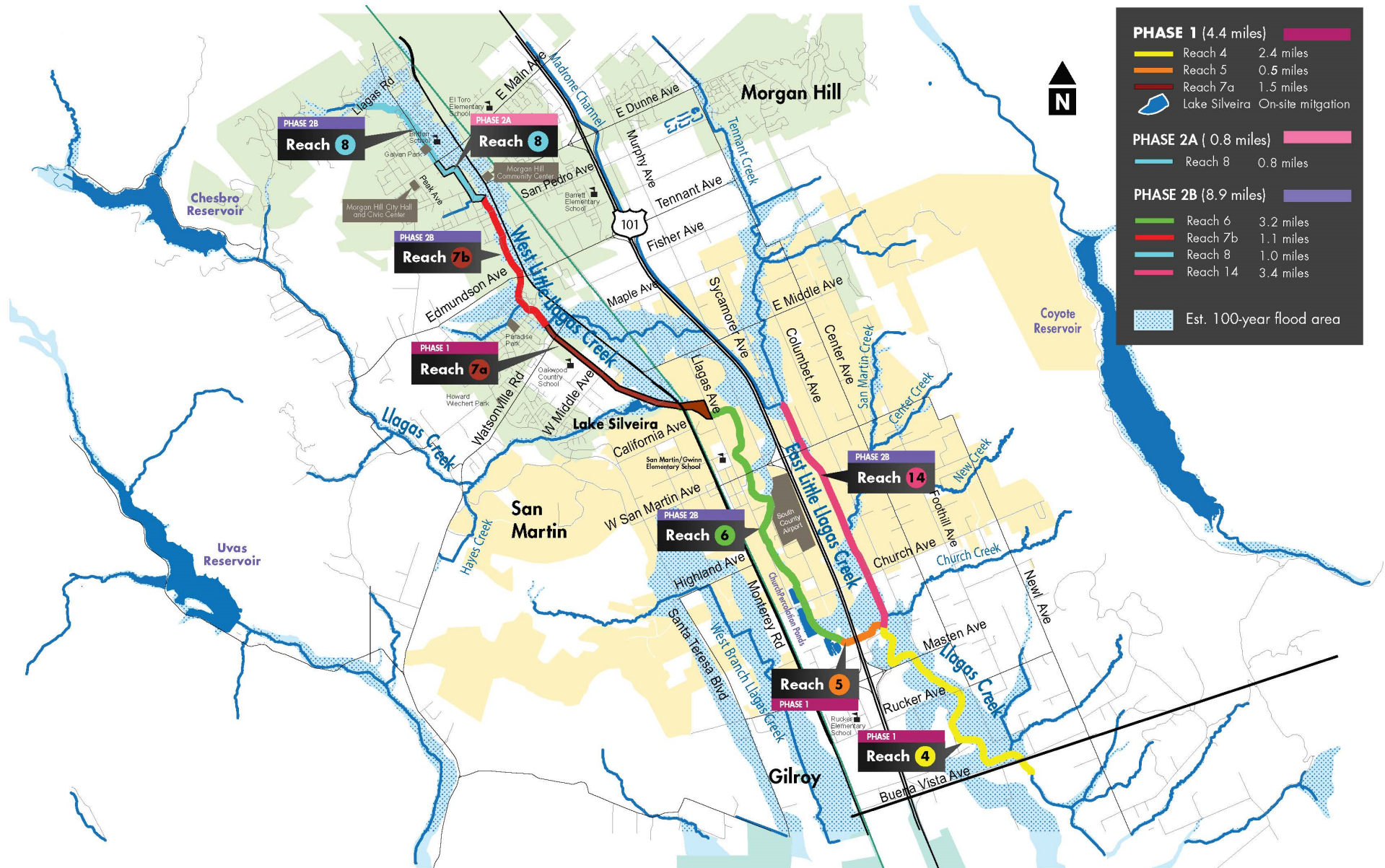
Upper Llagas Creek has experienced flooding during major storm events in 1955, 1958, 1962, 1963, 1969, 1982, 1986, 1996, 1997, 1998, 2002, 2008, 2009, 2011, and 2017.



October 13, 2009



Upper Llagas Creek Flood Protection Project



Construction began September 2, 2019 and was completed May 2022, which included a 3-year native revegetation establishment period



Phase 1

Project Elements



Phase 2A: Construction Cost ~\$51M

Construction began June 21, 2021 and was completed May 2024

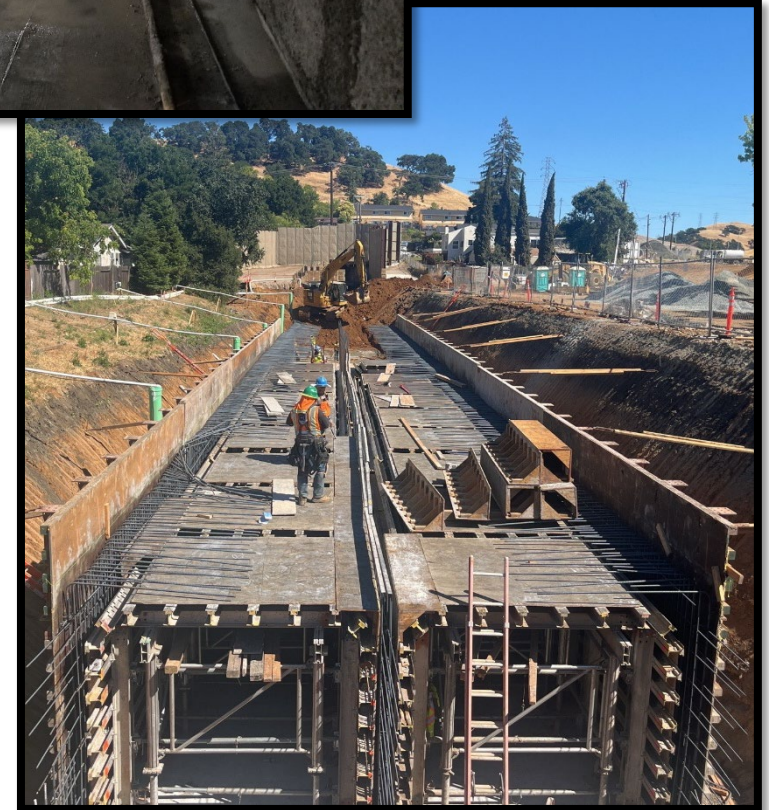
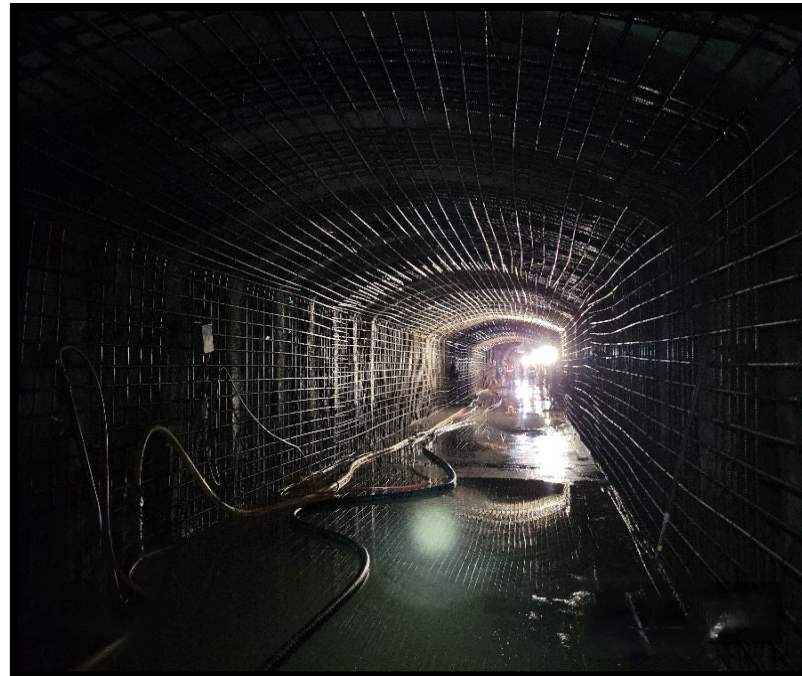


Phase 2A

High flow bypass tunnel and box culverts Morgan Hill

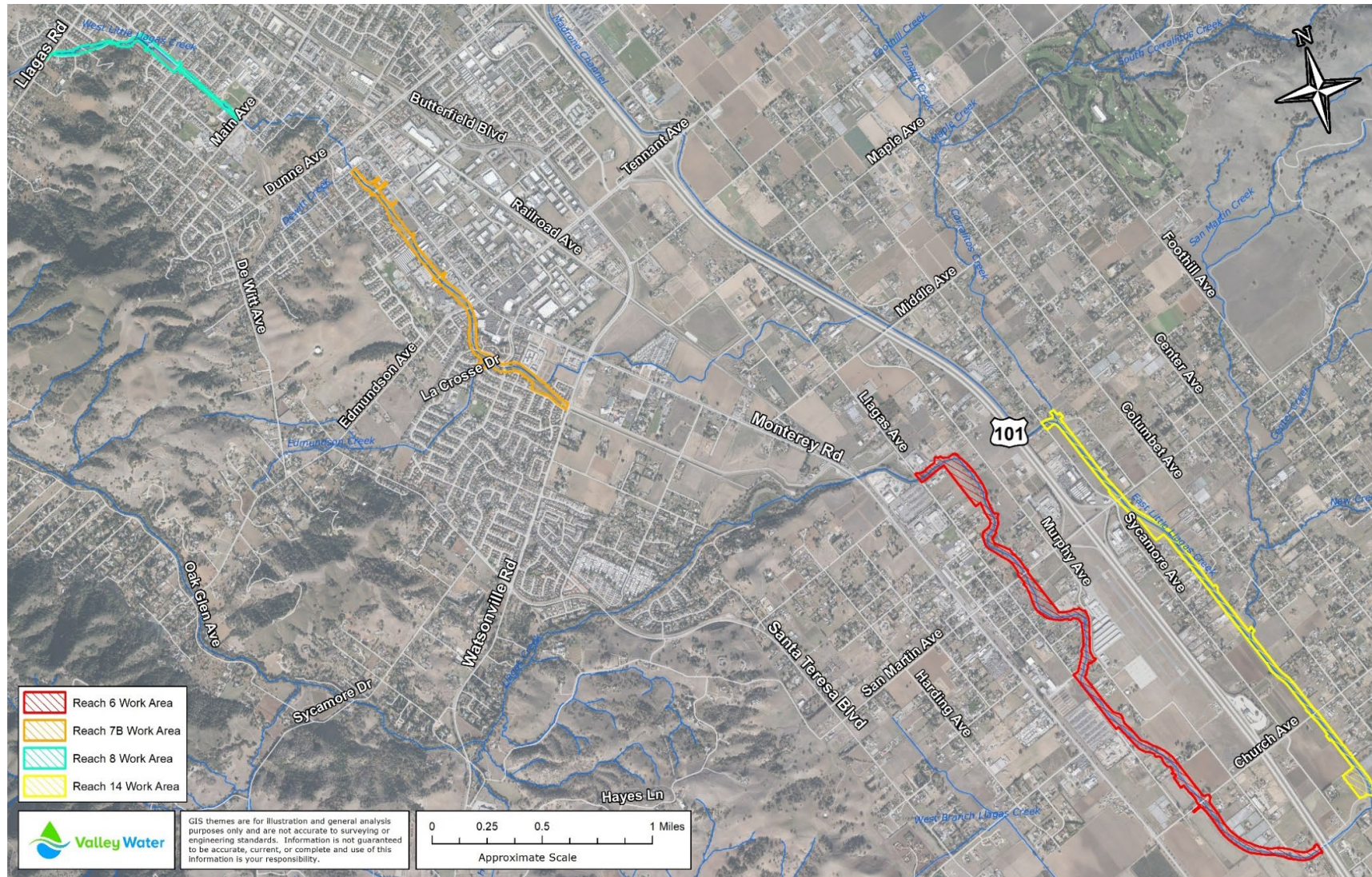


High flow
bypass tunnel
and box culvert
construction



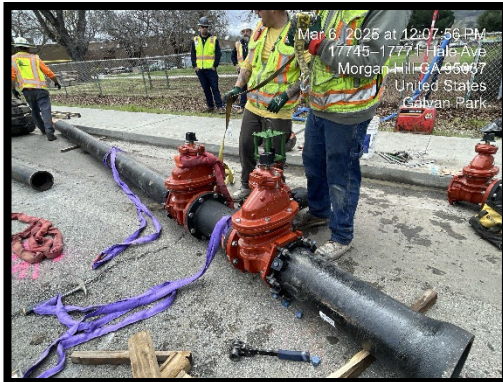
Phase 2B: Contract Award ~\$129M

Construction began September 9, 2024 with a March 2027 construction end date followed by a 3-year native vegetation establishment period.



Phase 2B

Underground and utility work

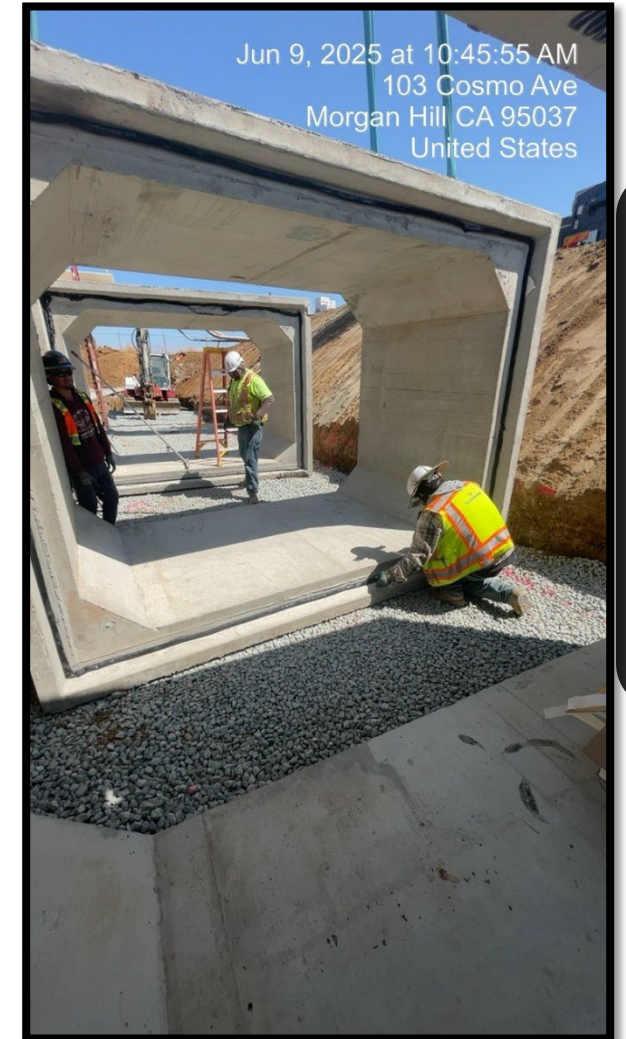


Utility Relocations



Inlet Weir Structure and Double Box Culvert

Storm Drain Improvements



Phase 2B

Channel Improvements



Channel
excavation



Invasive Species Removal



Planting
Preparation



Phase 2B

Reach 6 Drone Footage October 2025



Compensatory Mitigation

Lake Silveira August 2019



Lake Silveira

On-site Compensatory Mitigation

October 2023



August 2025

Phase 1

Construction of a 5.1-acre vegetated bench



Former Nature Quality
vegetable washing ponds,
San Martin



A 5.1-acre Sycamore
Woodland bench

Other Community Benefits

Trash and Debris collected in Llagas Creek



Riparian and Wetland Mitigation

Environmental and Community benefits

- ❖ Phase 1 – 54.97 acres of riparian mitigation
- ❖ Phase 2B – 60+ acres of riparian mitigation
- ❖ Lake Silveira includes 1.93 acres of wetland vegetation
- ❖ Phase 1 – Removed 13 acres of invasive blackberry
- ❖ Phase 2B – Removed 4.5+ acres of invasive Arundo Donax (Giant Reed)
- ❖ Constructed habitat for migratory birds, western pond turtles, native fish (Central Coast Steelhead), nesting birds, and more
- ❖ Robust monitoring program for mitigation plantings, habitat features, water quality, channel morphology, and native fish



QUESTIONS?



Bald Eagle Reach 6



Valley Water

Clean Water • Healthy Environment • Flood Protection

THIS PAGE INTENTIONALLY LEFT BLANK