



# 2025 Urban Water Management Plan

Board of Director Meeting, June 9, 2026

# Urban Water Management Plan

2

- State requirement
- Water conditions and management
  - Demand
  - Supply
  - Reliability
  - Contingency planning
  - Demand Management Measures
- Statutory deadline - July 1, 2026

## Urban Water Management Plan Guidebook



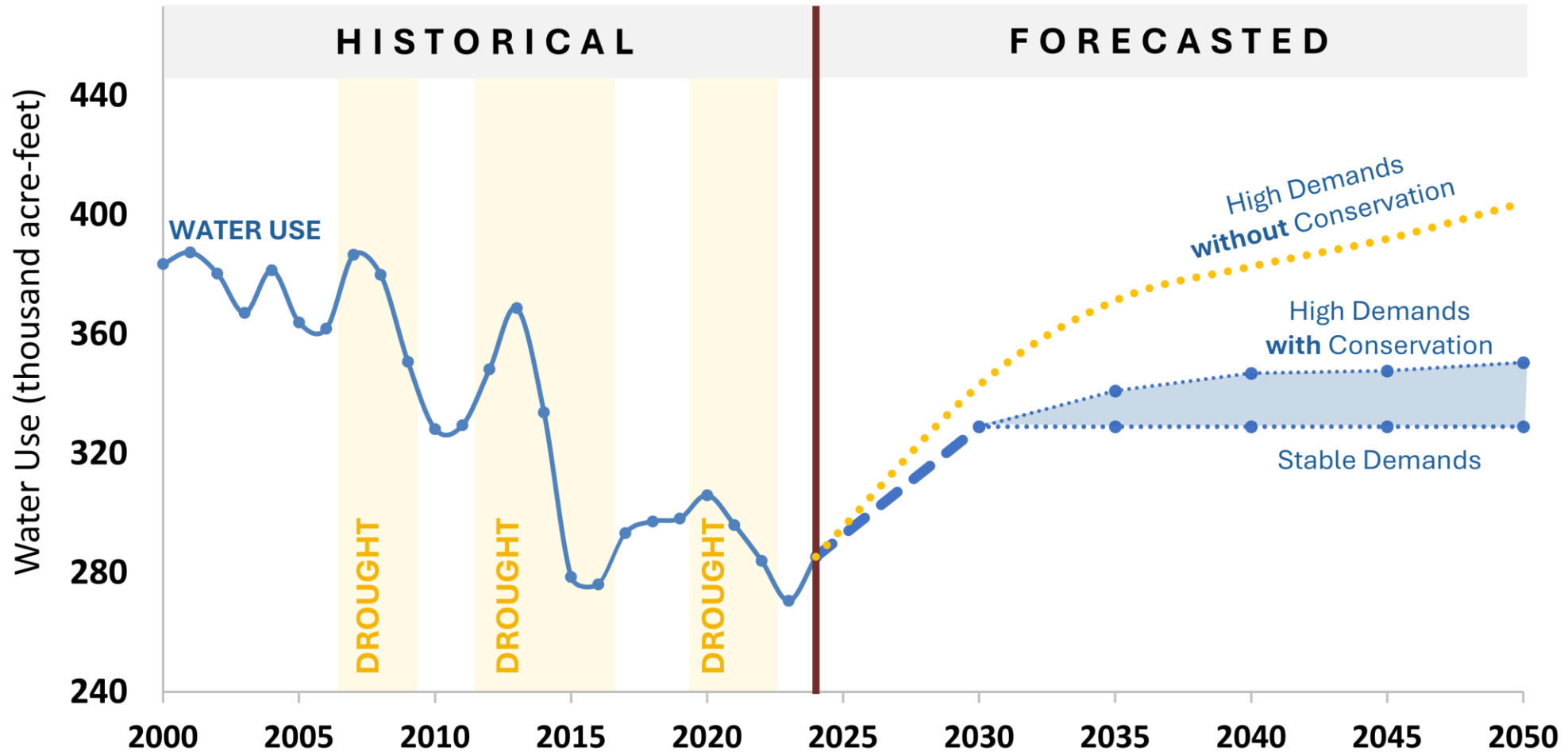
State of California  
California Natural Resources Agency



Department of Water Resources  
Division of Regional Assistance  
Water Use Efficiency Branch  
Resilience and Efficiency Section

January 2026

# Demand Projection

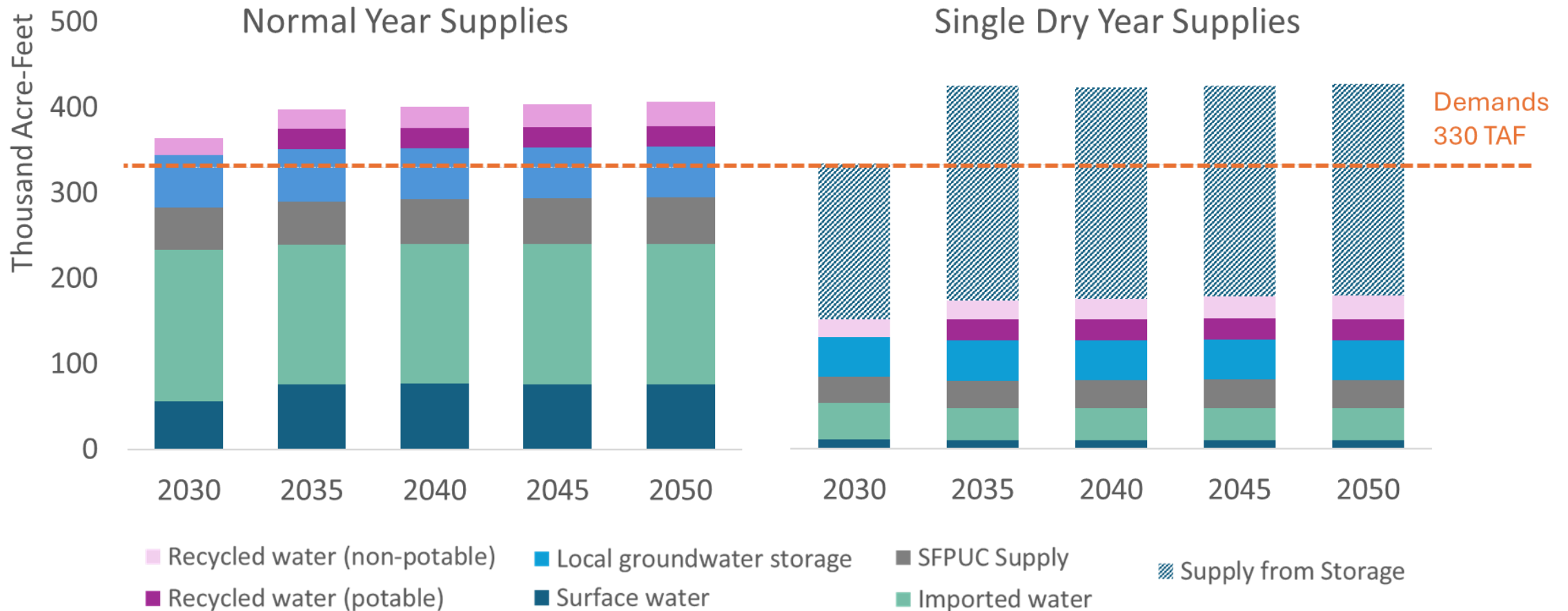


# Existing and Projected Water Supplies

- Existing and planned water supply for various hydrologic conditions
  - normal year
  - single dry year
  - five consecutive dry year
- Water Supply Master Plan 2050 recommended projects
- Delivery Capability Report 2025

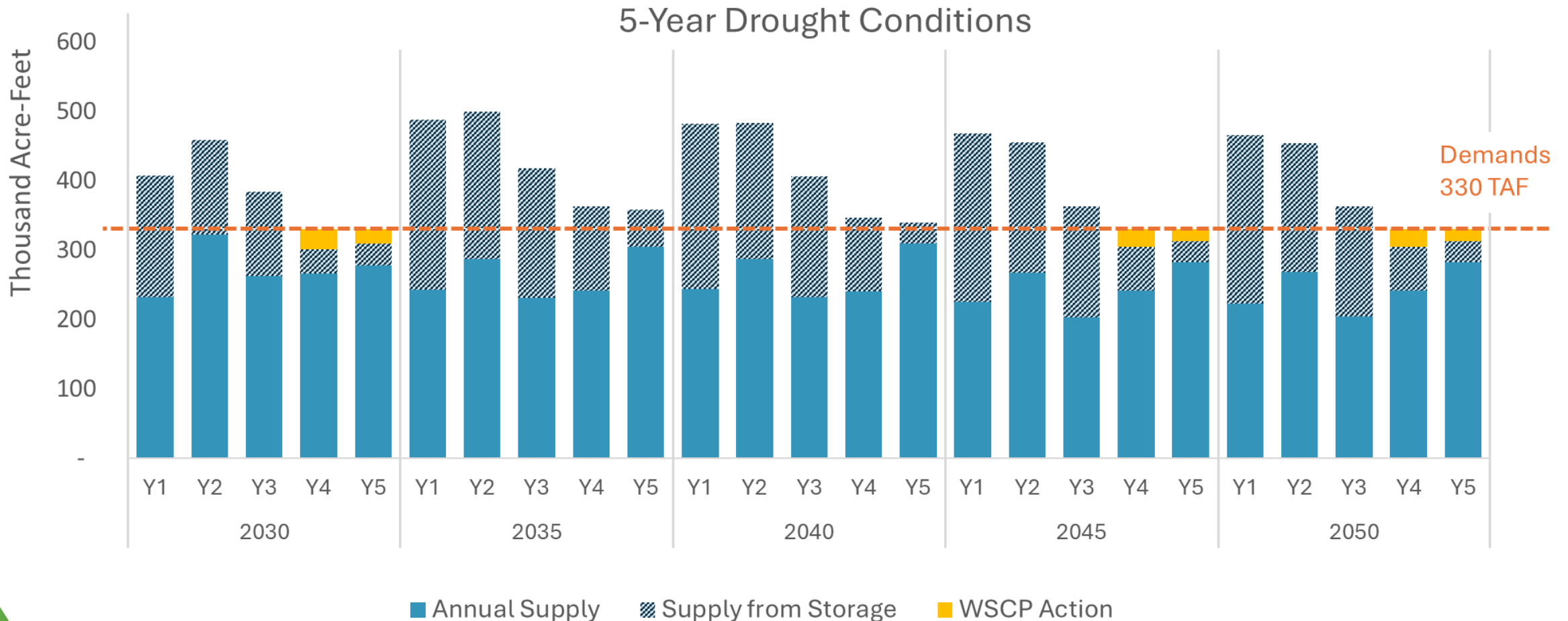
# Water Supply Reliability

- Meet all demands in normal and single dry years



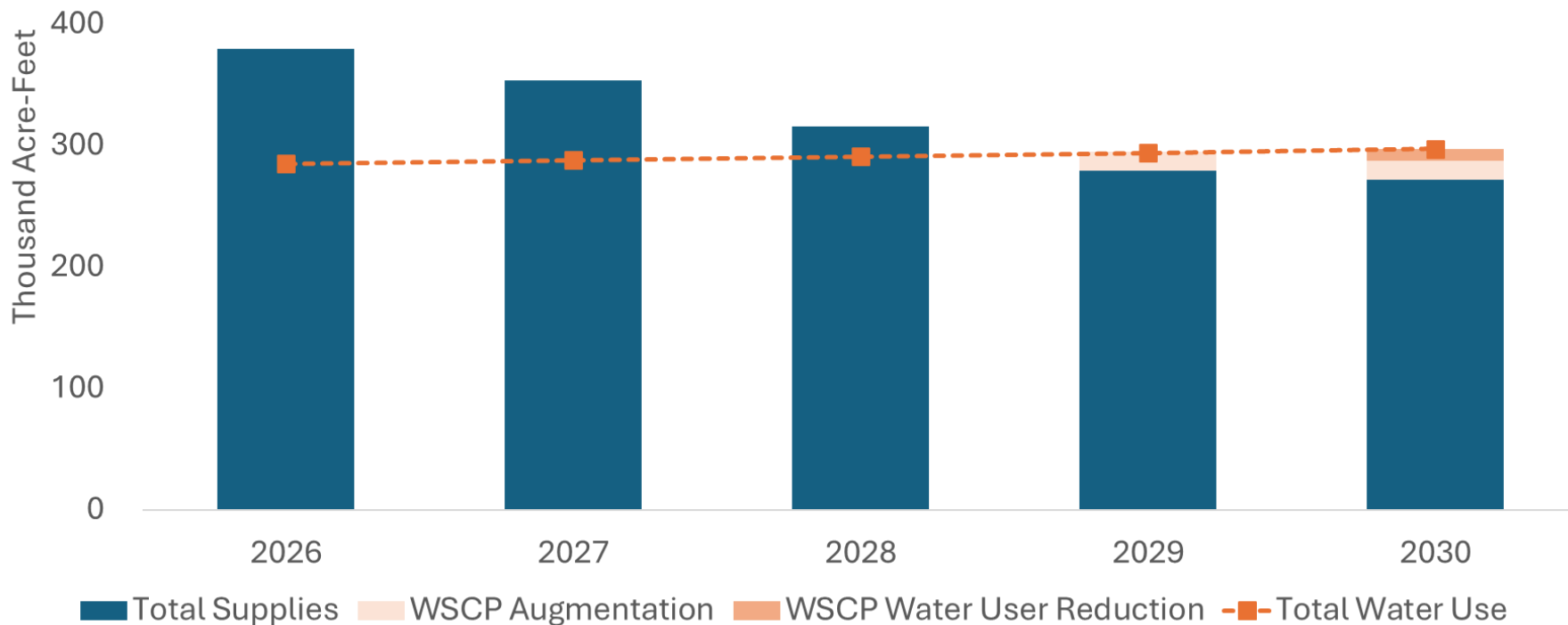
# Water Supply Reliability

- Achieve level of service goal under multi-year drought conditions



# Drought Risk Assessment

- Assuming a drought occurring over the next five years
- Achieving level of service goal



# Water Shortage Contingency Plan

- Shortage stage
- Actions and procedures
- Legal Authority
- Communication
- Financial impact

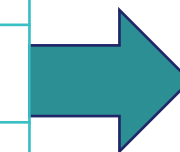
## Adopt six standard shortage stages

Existing Valley Water Stages

Stage	Title	Projected End-of-Year GW Storage (AF)	Short-term reduction in water use
1	Normal	> 300,000	None
2	Alert	< 300,000	0-10%
3	Severe	< 250,000	10-20%
4	Critical	< 200,000	20-40%
5	Emergency	< 150,000	Over 40%

DWR Standard Stages

Stage	Water Shortage
1	0-10%
2	10-20%
3	20-30%
4	30-40%
5	40-50%
6	> 50%



# Shortage Stage and Response Actions

9

Stage	Water Shortage	Response Actions	
1 – Alert	≤10%	0-10% met by Storage	0-10% from demand reduction
2 – Warning	10-20%	0-20% met by Storage	0-20% from demand reduction
		Supply augmentation	
		Operational changes	
3 – Severe	20-30%	0-30% met by Storage	0-20% from demand reduction
		Supply augmentation	
		Operational changes	
4 – Critical	30-40%	0-40% met by Storage	0-20% from demand reduction
		Supply augmentation	
		Operational changes	
5 – Extreme	40-50%	0-50% met by Storage	≥20% from demand reduction
		Supply augmentation	
		Operational changes	
6 – Emergency	> 50%	0-50% met by Storage	≥20% from demand reduction
		Supply augmentation	
		Operational changes	

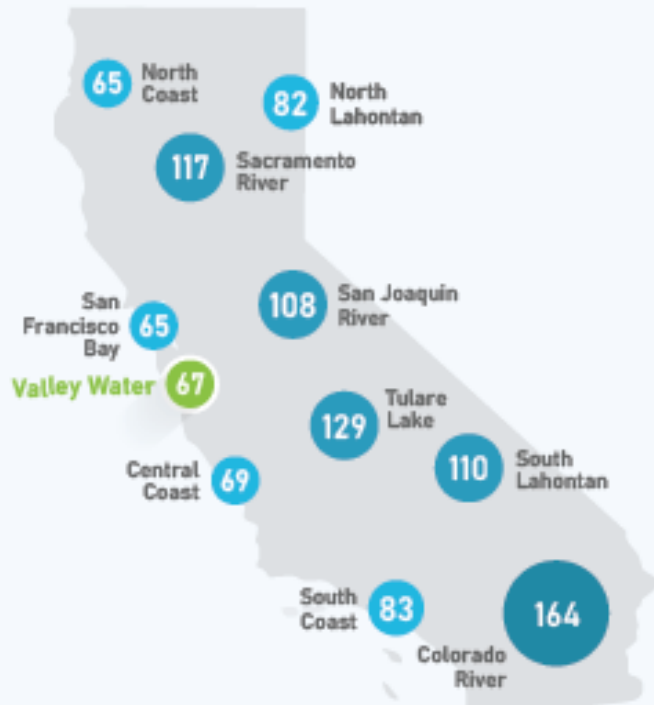
valleywater.org



# Demand Management Measures

Santa Clara County ranks as the **10th lowest** gallons per capita per day (GPCD) in the state.

Average Residential Indoor & Outdoor Water Use, 2014-2025 (GPCD)

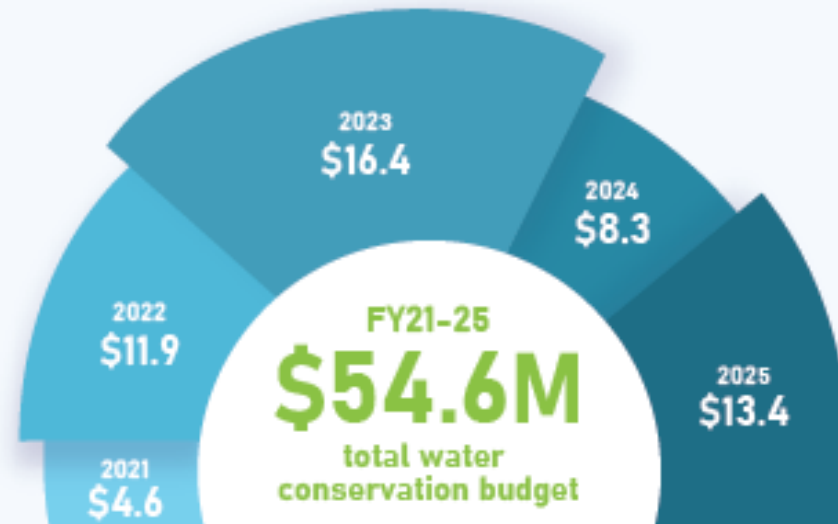


Data Source: State Water Resources Control Board



Valley Water's conservation program helps avoid importing an additional 87,000 acre-feet (af) of water into the county annually.

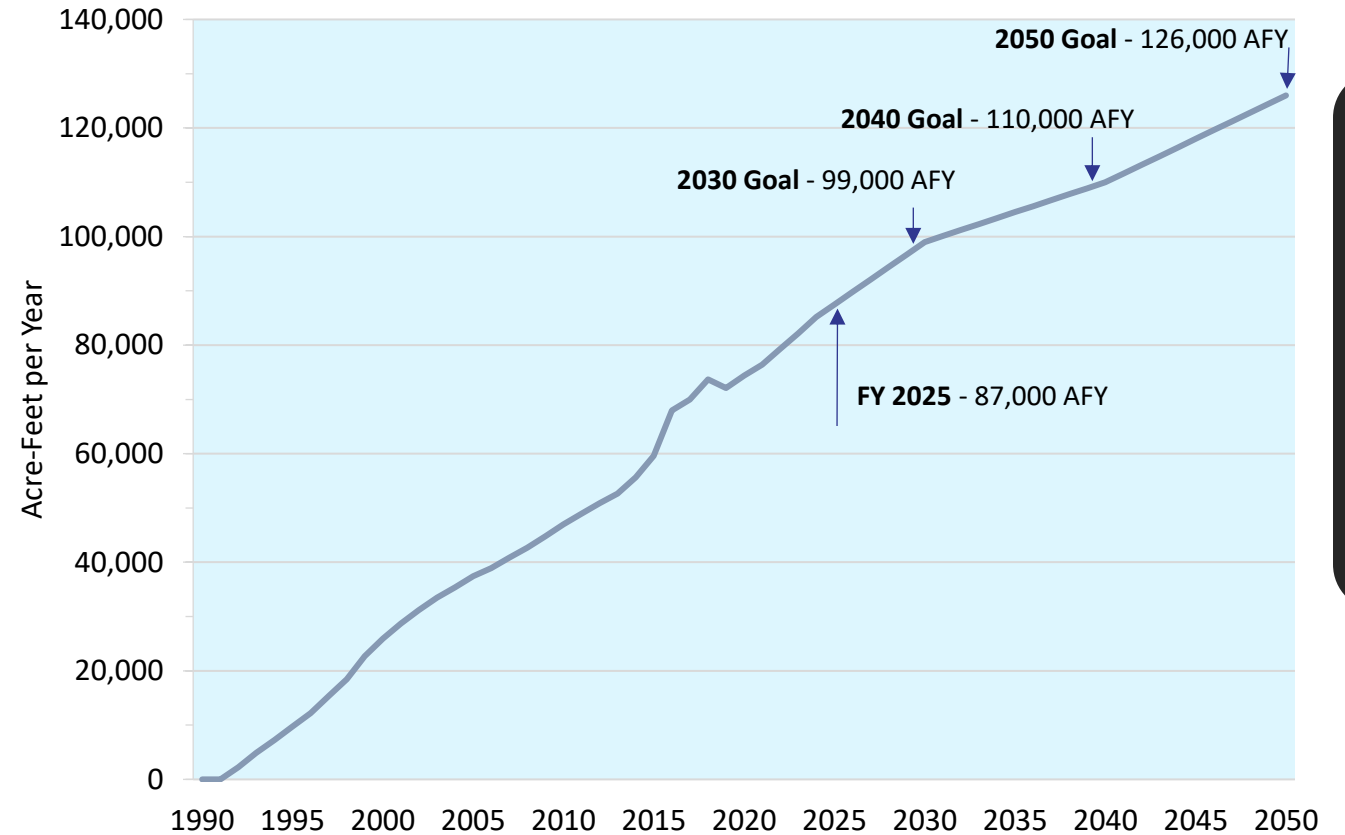
In Fiscal Year (FY) 2025, Valley Water's conservation budget **more than doubled** compared to FY2021. Between FY2021-2023, budget increases were driven as part of Valley Water's drought response.



# Regional Efforts on Reducing Delta Reliance

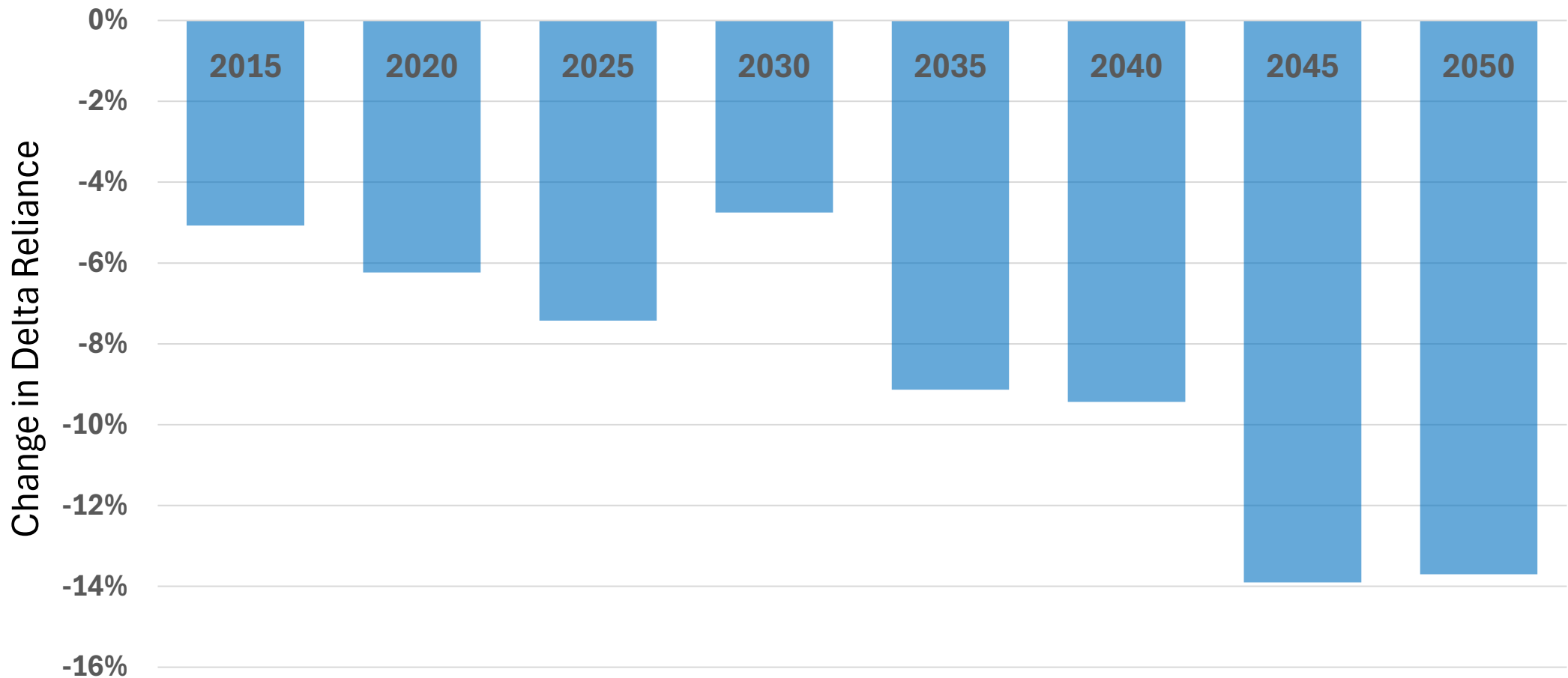
- Water Conservation
- Local surface water
- Natural groundwater recharge
- Direct potable reuse
- Recycled water
- Retailer supply

Water Conservation Savings



# Reduced Delta Reliance

Change in Reliance from Delta Supplies from 2010 Baseline



valleywater.org

# Next Steps

- Finalize and adopt the plan
- Submit plan to State, County, and cities

**THIS PAGE INTENTIONALLY LEFT BLANK**