

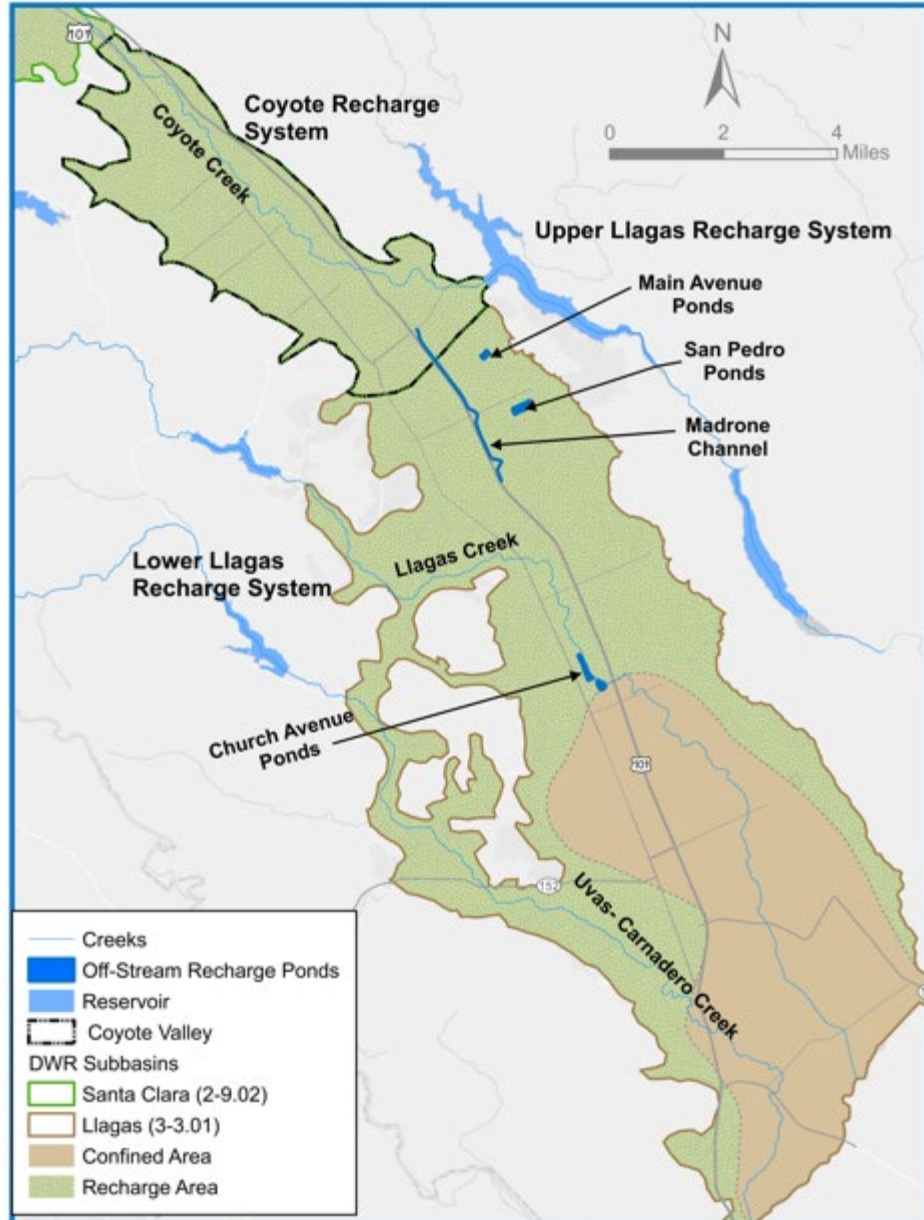


South County Recharge

Agricultural Water Advisory Committee

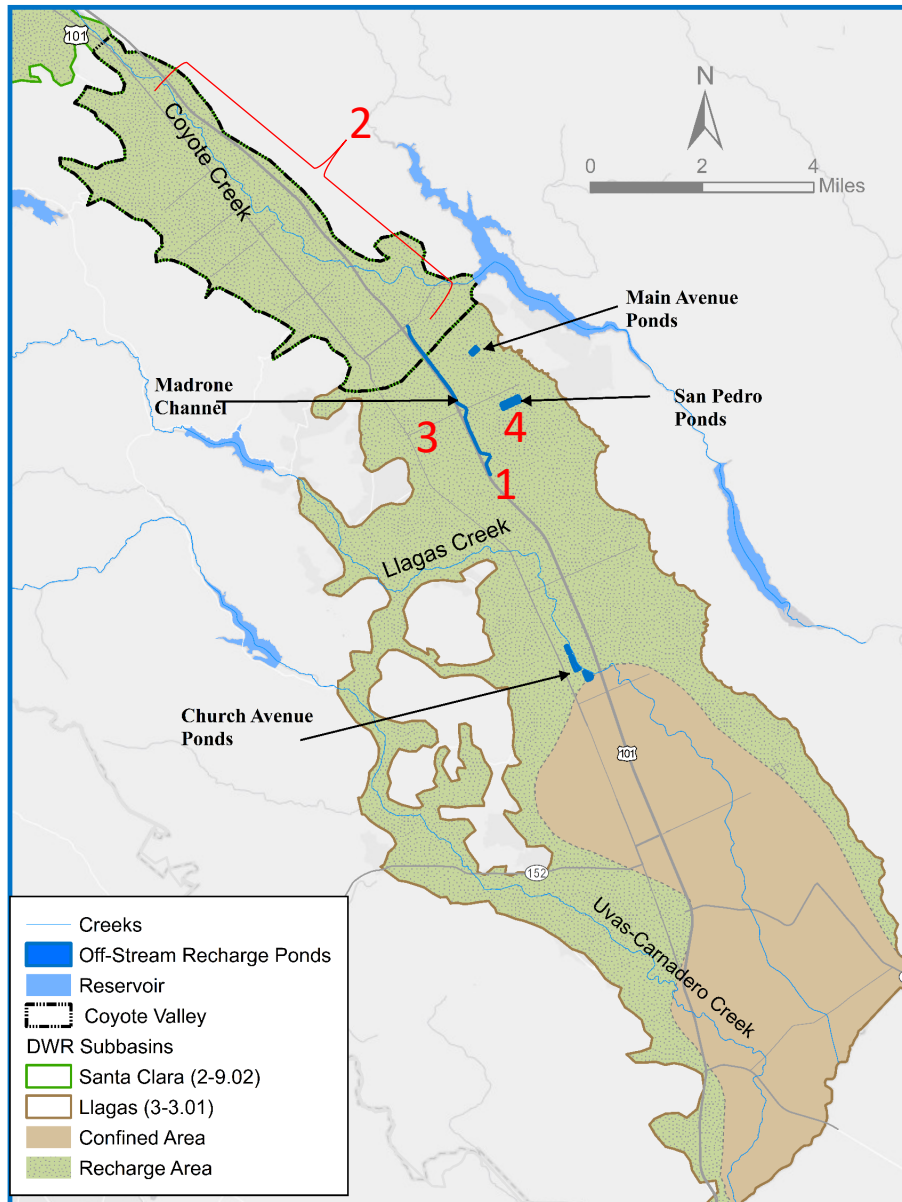
April 6, 2026 Attachment 3
Page 1 of 9

Current South County Recharge Facilities



- Managed recharge supports:
 - Municipal wells for cities and unincorporated areas
 - Thousands of privately owned domestic, agricultural, and industrial wells
- Three recharge systems
 - Coyote
 - Upper Llagas
 - Lower Llagas
- In-stream recharge from reservoir and imported water releases
- Off-stream recharge ponds

Potential South County Recharge Projects



- 1. Madrone Channel Expansion:** increase recharge capacity of the existing facility
- 2. Coyote Valley Recharge Pond:** construct new off-stream recharge pond(s)
- 3. Butterfield Channel Recharge:** connect the Butterfield Channel to Valley Water's raw water conveyance system
- 4. San Pedro Ponds Improvement Project:** implement project(s) to enable existing seven ponds to be operated at full capacity without interfering with nearby septic systems

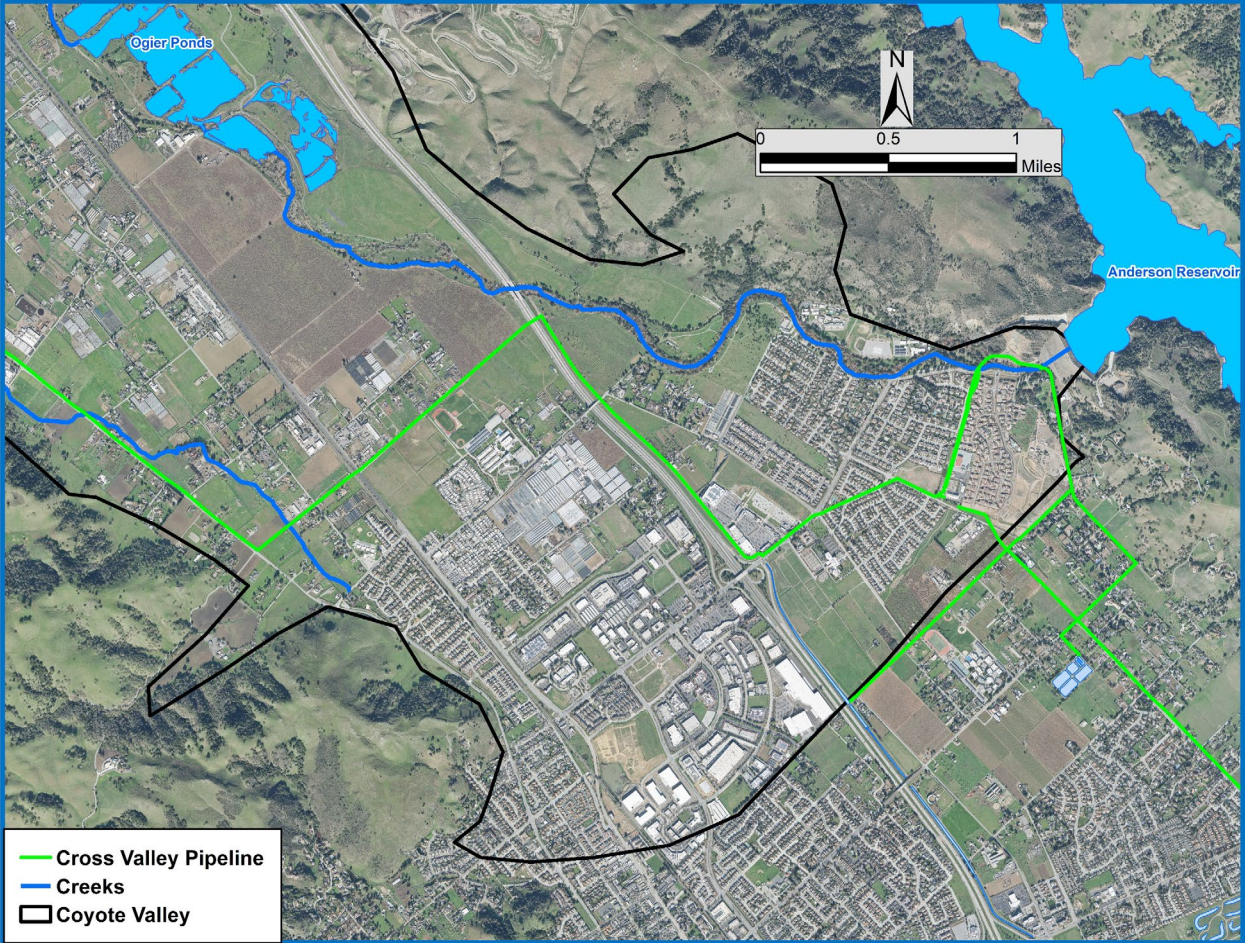
Potential South County Recharge Projects

1. Madrone Channel Expansion



Potential South County Recharge Projects

2. Coyote Valley Recharge Pond



Potential South County Recharge Projects

3. Butterfield Channel Recharge



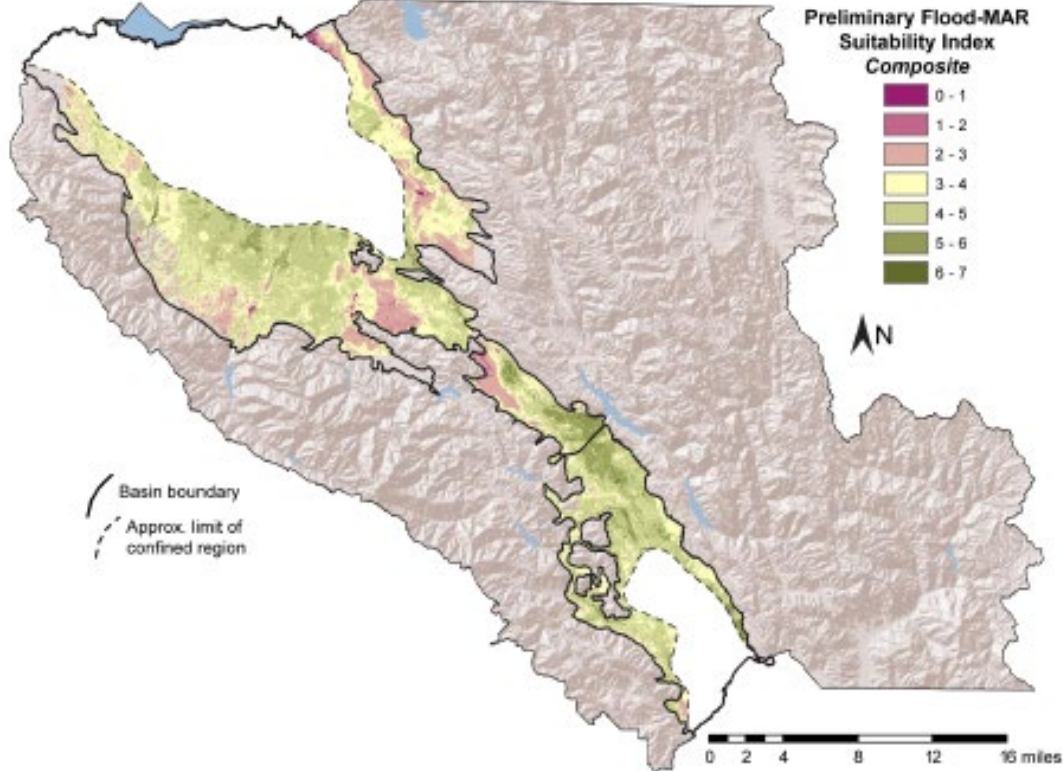
Potential South County Recharge Projects

4. San Pedro Ponds Improvement Project



Status of Flood-MAR

Pre-Feasibility Study for a Flood-MAR Program in the Santa Clara Valley Water District Service Area, Santa Clara County, CA



- Pre-Feasibility Study Report
 - Presented at WSDM and AWAC meetings in 2023
 - Preliminary suitability map
 - Field analyses needed to confirm site suitability
- Grant funding
- Evaluating potential pilot areas
 - Hydrologic analysis
 - Stormwater availability

Recharge with Surface Water vs Injection Wells



Surface Water

- 98 miles of instream recharge
- 102 recharge ponds



Injection Wells

- none

1. Technical/operational challenges:	lower	higher
2. Groundwater-quality challenges:	lower	higher
3. Cost:	lower	higher
• O&M, Water treatment, and Energy		
4. Regulatory considerations:	lower	higher
5. Secondary benefits:	higher	lower

THIS PAGE INTENTIONALLY LEFT BLANK