



Monthly Drought Emergency Response and Water Supply Update

Valley Water Board Meeting

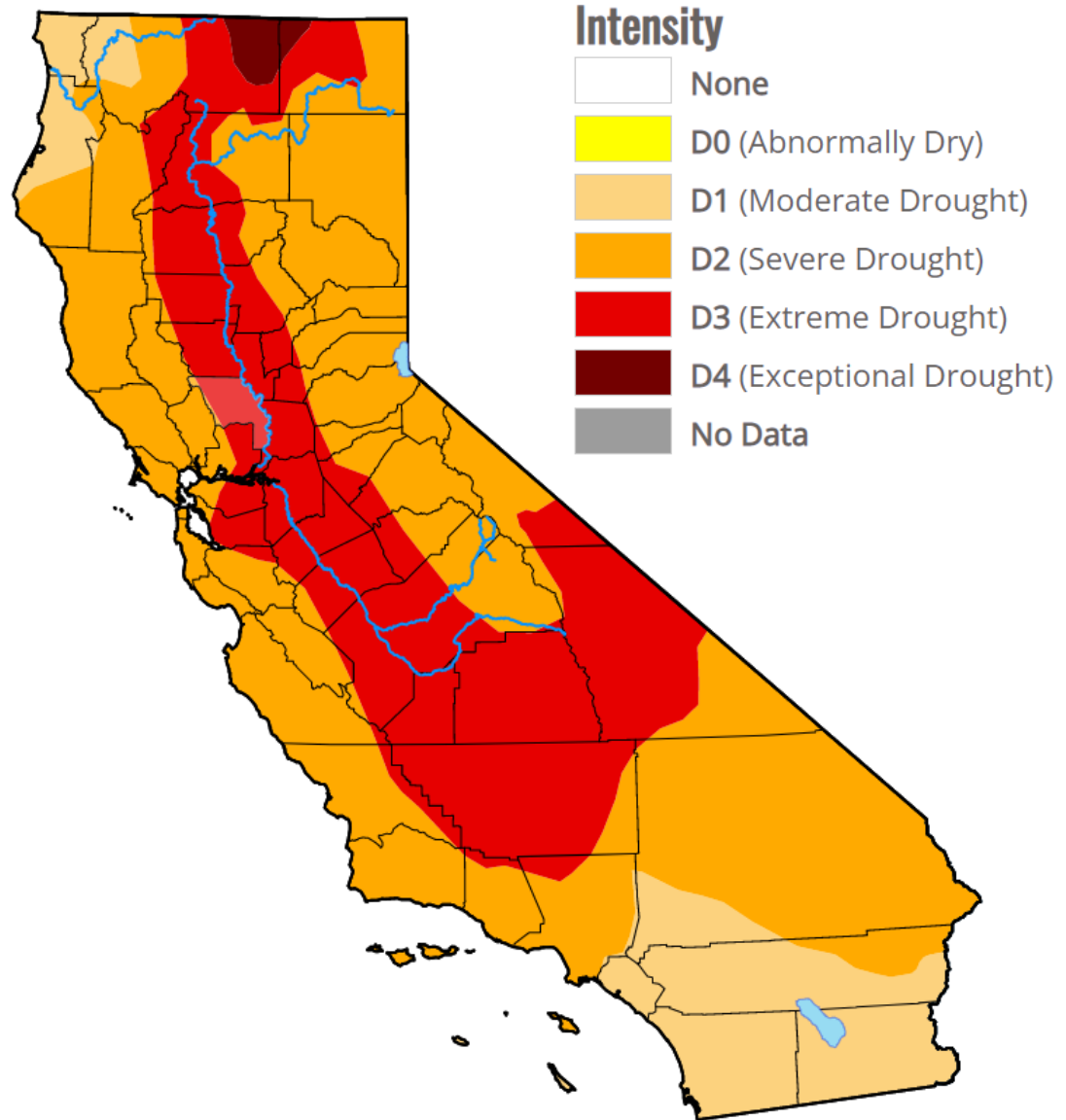
January 11, 2022

Presenter: Neeta Bijoor, Ph.D.

Drought Status

- Severe/Extreme drought
- Local reservoirs levels increased slightly
- State snowpack improved

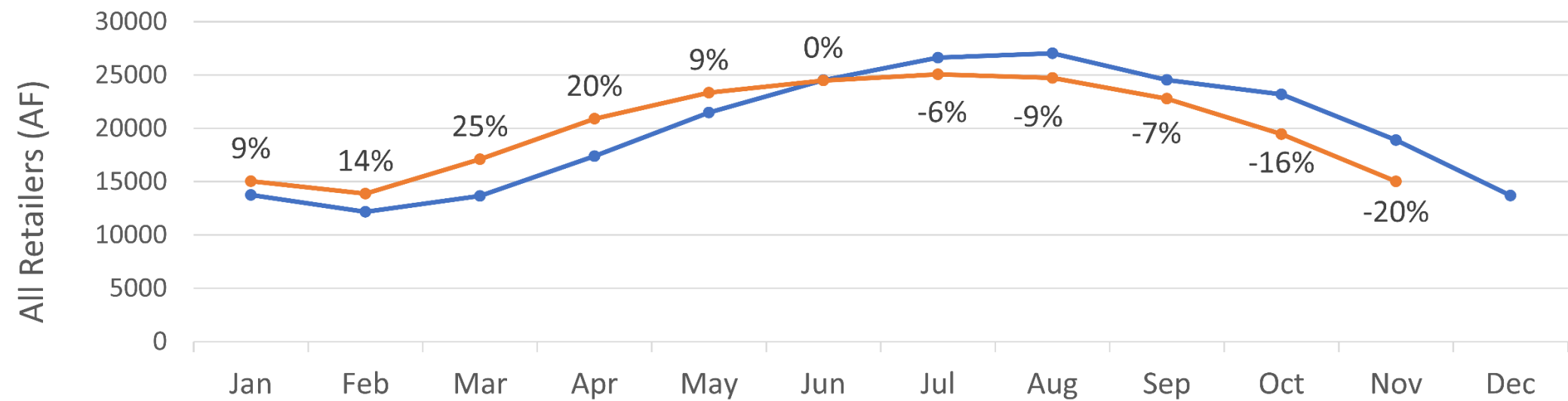
Data sources: U.S. Drought Monitor, California DWR



Valley Water's water savings call was achieved in November 3

2019 2021

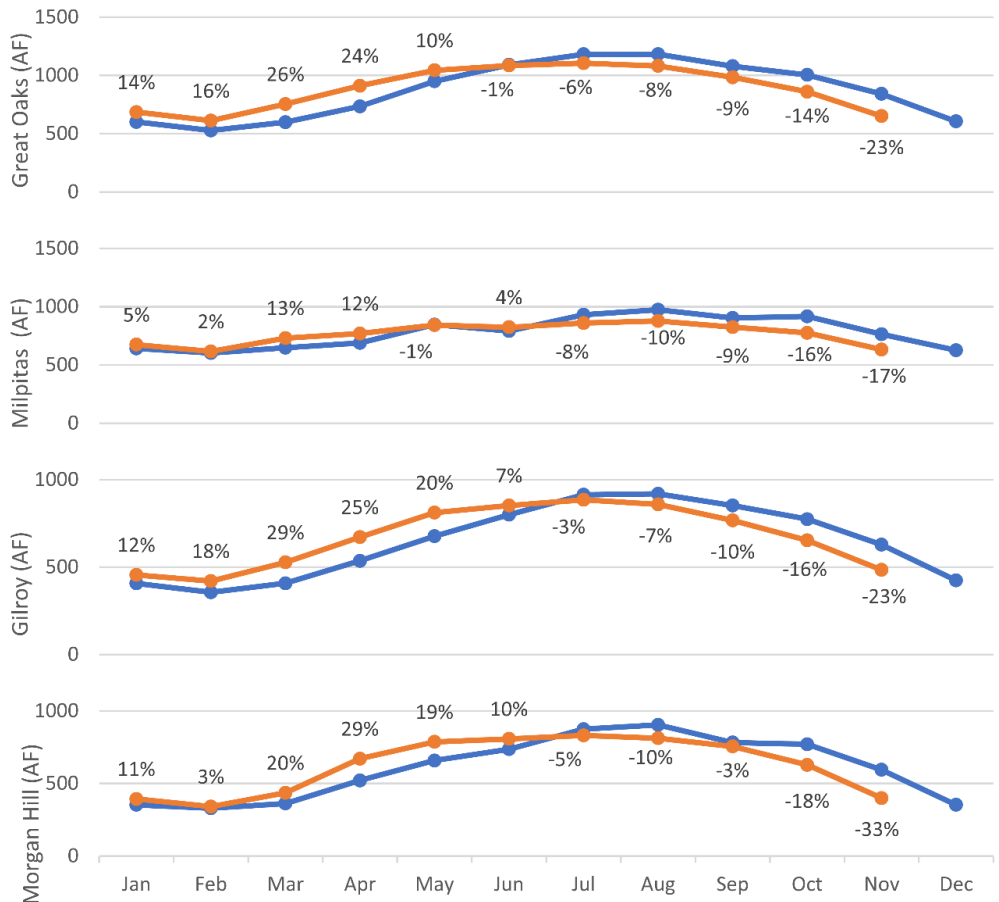
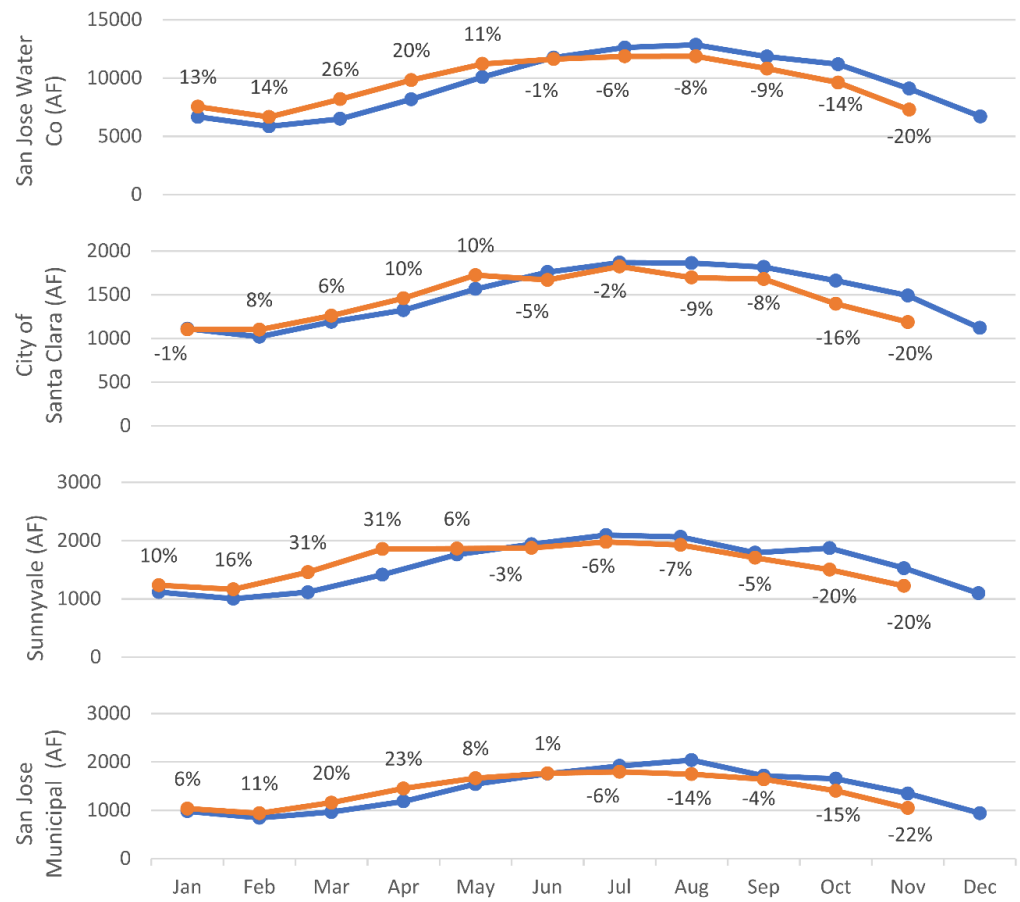
The percent increase (+) or percent decrease (-) in water use from 2019 to 2021 is shown for each month.



Retailer Progress in Water Use Reduction



The percent increase (+) or percent decrease (-) in water use from 2019 to 2021 is shown for each month.

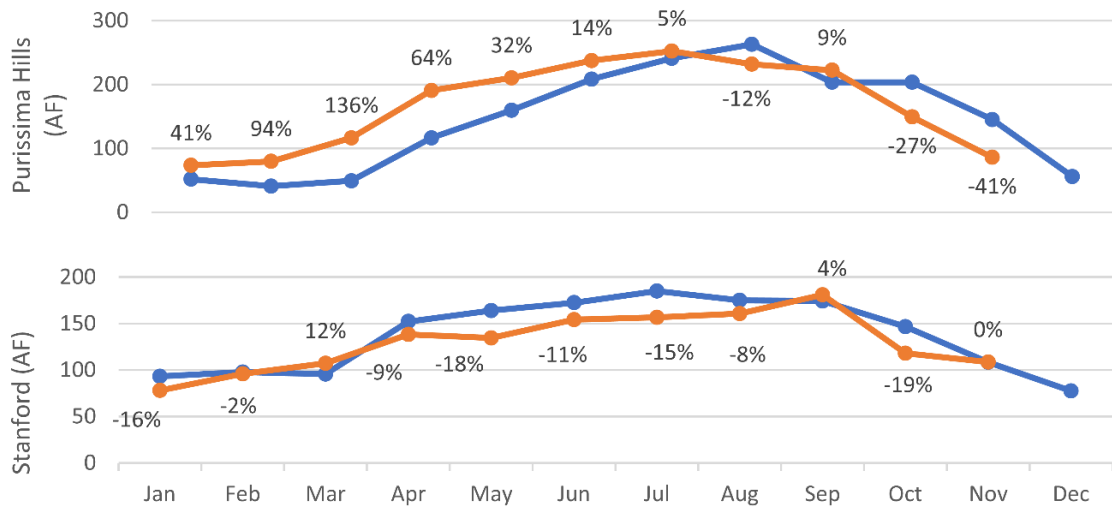
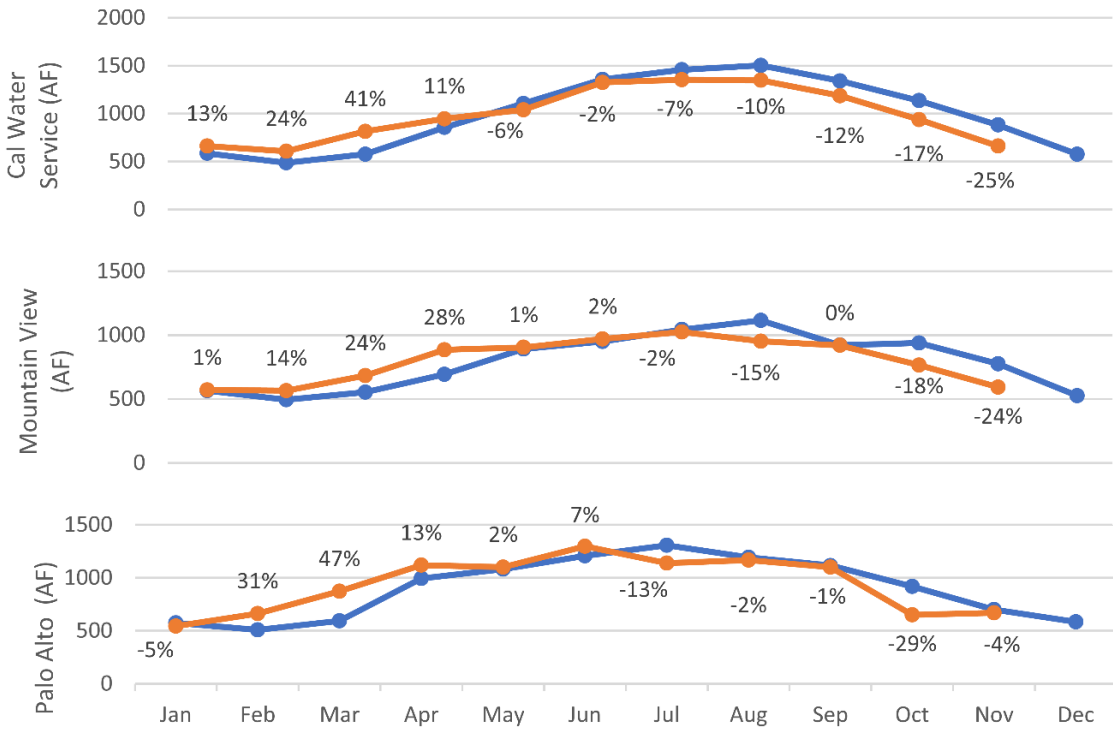


Retailer Progress in Water Use Reduction

(cont'd)

2019 2021

The percent increase (+) or percent decrease (-) in water use from 2019 to 2021 is shown for each month.



Water Supply Scenarios Evaluated

6

Forecast of potential water supply conditions and potential actions needed based on:

- Median Conditions case for 2022
- Dry Conditions cases for 2022/2023
 - Dry, Low Imports
 - Dry, Minimal Imports (worst case)

Both cases assume critically dry 2022 and dry 2023

Table of Scenarios Evaluated¹

Scenario	Imported Supplies (Allocations, transfers, and Semitropic take)	Local Surface Supplies	WATER SUPPLY OUTLOOK			
			Groundwater Recharge	Treated Water	Carryover	End of Year Groundwater Storage
Median	Adequate	64 TAF	Full recharge	Provide 100% delivery	Adequate	2022: 351 TAF Normal (Stage 1)
Dry, Low Imports	Low	2022: 0.7 TAF 2023: 15 TAF	Minimum recharge	Maintain 2021 delivery reduction (23%)	Minimal	2022: 253 TAF Alert (Stage 2) 2023: 203 TAF Severe (Stage 3)
Dry, Minimal Imports	Minimal	2022: 0.7 TAF 2023: 15 TAF	Minimum recharge	Significant delivery reduction (30% in 2022, 45% in 2023)	None	2022: 241 TAF Severe (Stage 3) 2023: 174 TAF Critical (Stage 4)

Planning Ahead

Given the wide range in potential water supply conditions, we continue to:

- Actively track key indicators and changing conditions
- Prepare for continued dry conditions
- Recommend action and adapt as needed

Tracking Changing Conditions

9

- Local and statewide hydrology and reservoir storage
- Groundwater levels
- Water quality
- Water demands
- Drought awareness
- Policy or regulatory changes

Preparations for Continued Dry Conditions

10

- Securing emergency imported supplies
- Requesting Public Health and Safety Water
- Coordinating with DWR on Semitropic return
- Seeking FERC approval for water storage in Anderson Reservoir during 2022
- Supporting growth in water conservations programs
- Continuing consistent, coordinated water conservation messaging

Current Recommended Actions

11

- Maintain Valley Water Resolution 21-68 call for 15% reduction in water use (compared to 2019)
- Work with untreated surface water users to achieve water use reduction call
- Continue increased conservation program rebate rate
- Outreach to agriculture, retailers, cities, County
- Continue to monitor water supply indicators and adapt as needed

Possible Future Actions

12

Assess scenario we are in by March 2022

Scenario	Possible Actions	
	Pursue emergency imported supplies	Consider increasing water use reduction or restrictions
Median	Not needed	Not needed
Dry, Low Imports	Recommended	Recommended
Dry, Minimal Imports	Recommended	Recommended

Collaboration

13

- Council action or administrative measures by County of Santa Clara and 13 cities
- Partnership with the County of Santa Clara and Office of Sustainability

Drought and Conservation Public Outreach

14

Media campaign and outreach

Retailer partnership

Speakers Bureau outreach

Youth Commission

Education



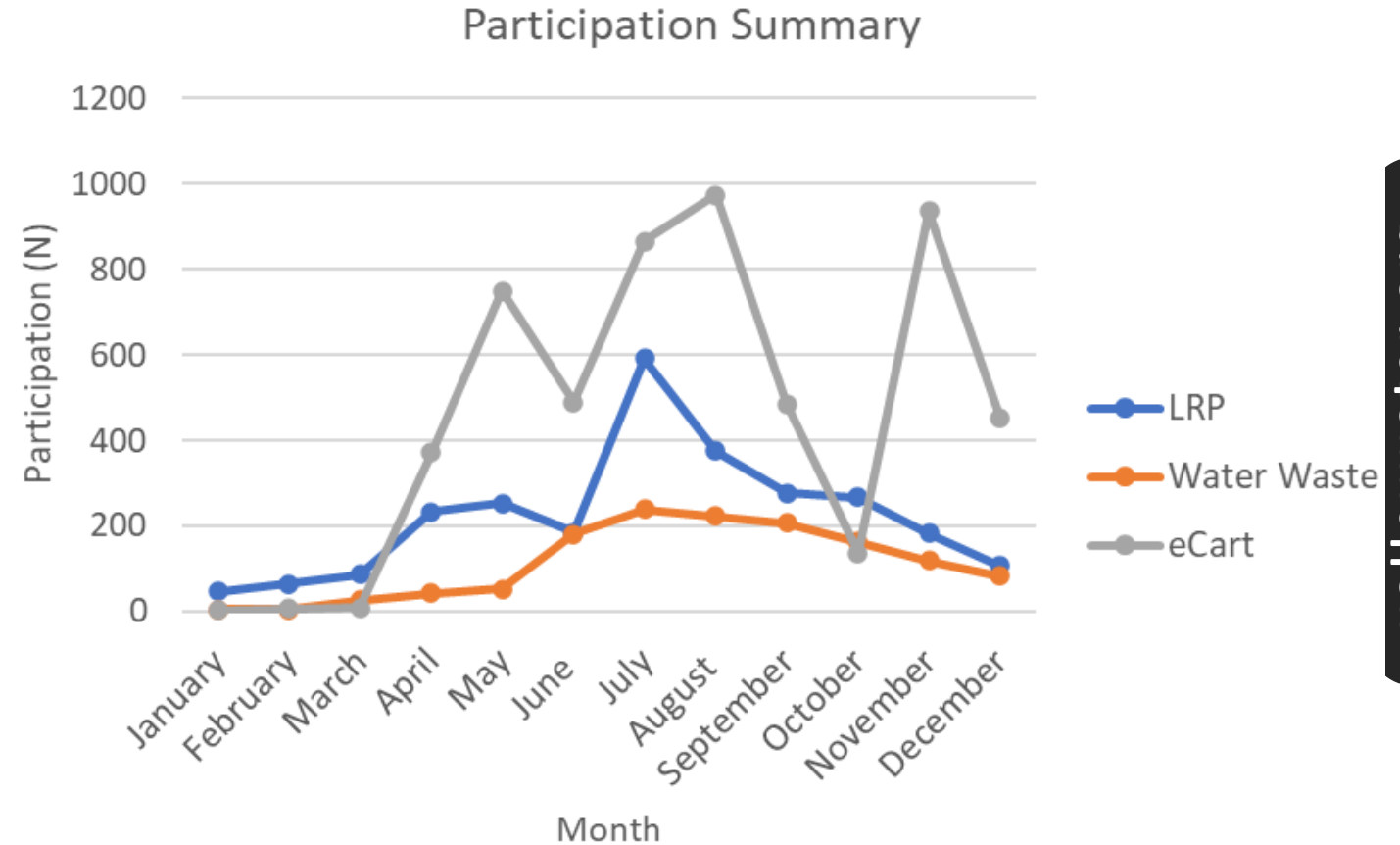
Sunnyvale

A joint message from the City of Sunnyvale
Environmental Services Department
and Valley Water

valleywater.org

Water Conservation Programs

- Increased participation
- Landscape Rebate Program application processing time reduced significantly
- Outdoor field services vendor will further reduce time



2022 Imported Water Supplies

- State reservoir storage levels below normal
- State Water Project – based on human health and safety
- Central Valley Project – allocation late February
- Semitropic banking recovery - 31.5 TAF
- Emergency transfers - as needed

Groundwater

17

Conditions

- Seasonal recovery of groundwater levels
- Emergency transfers, water use reduction helped slow groundwater level declines
- Continued risk of subsidence, wells going dry in 2022 if dry conditions continue and conservation target not met

Managed Recharge

- Increased recharge since August 2021
- Recharge was below average in 2021

State and Federal Coordination

18

- Each State legislative delegation office received a drought update
- Water rights curtailments suspended in advance of December storms
- Continued coordination with Bureau of Reclamation

QUESTIONS



This page intentionally left blank.