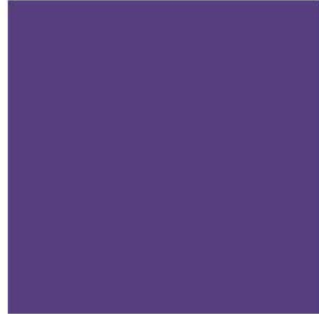




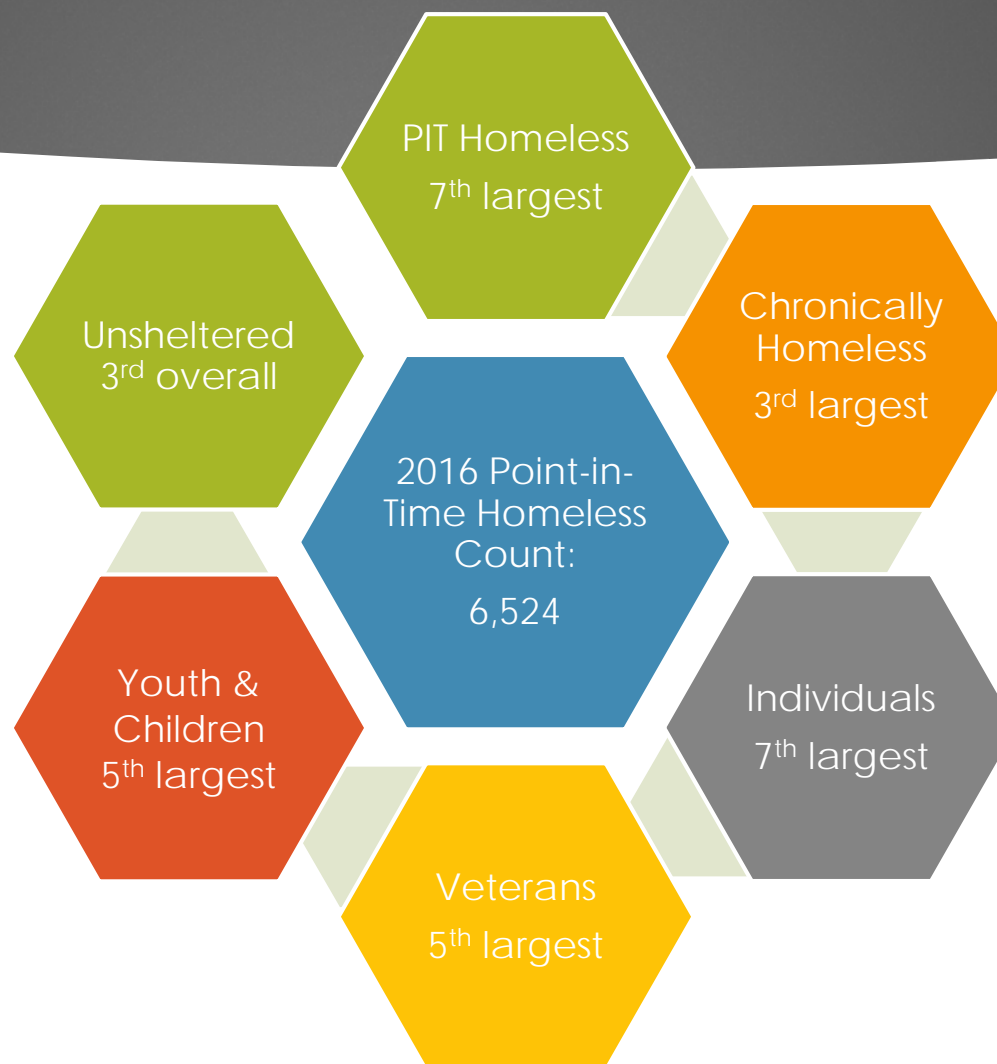
# Supportive Housing System Overview

*An end to homelessness means that every community will have a systematic response in place that ensures homelessness is prevented whenever possible or is otherwise a rare, brief, and non-recurring experience.*



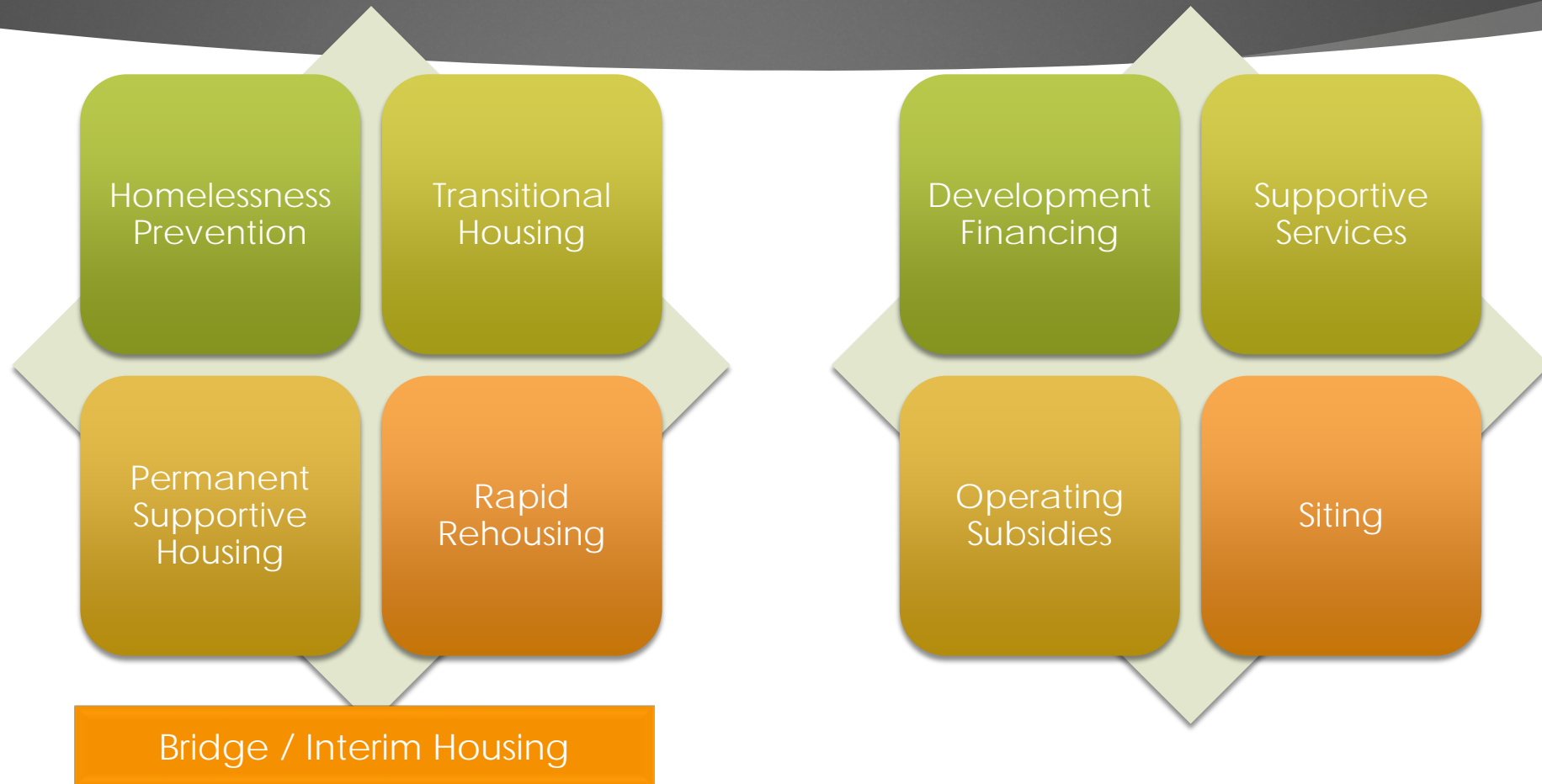
# SCC Homelessness compared to other major metropolitans

3



Source: HUD's 2016 Annual Homeless Assessment Report

# System Components



# Summary of Accomplishments

COMMUNITY PLAN TO END  
HOMELESS, 2015-2020  
2016 UPDATE



# Strategies

**1**

## DISRUPT SYSTEMS

Disrupt and transform existing homeless response systems

**2**

## BUILD THE SOLUTION

Build new and better solutions

**3**

## SERVE THE PERSON

Deploy the new solutions with a client-centered approach to meet each individual's needs.

# 2016 Accomplishments

Total New Housing Opportunities Created



2015  
27.92%

2016  
48.11%



Percentage Who Exited Other Programs to Permanent Housing



Percentage Who Remained Stably Housed in PSH

2015

96.02%

2016

97.26%

100%



2016  
1,741

2015  
1,212

Total Housed

# Build the Solution

## New Housing Opportunities: Units and Rental Subsidies



**Measure A**  
**\$950 million**  
for affordable housing



**Joint RFP for**  
**\$48 million**  
in capital funds

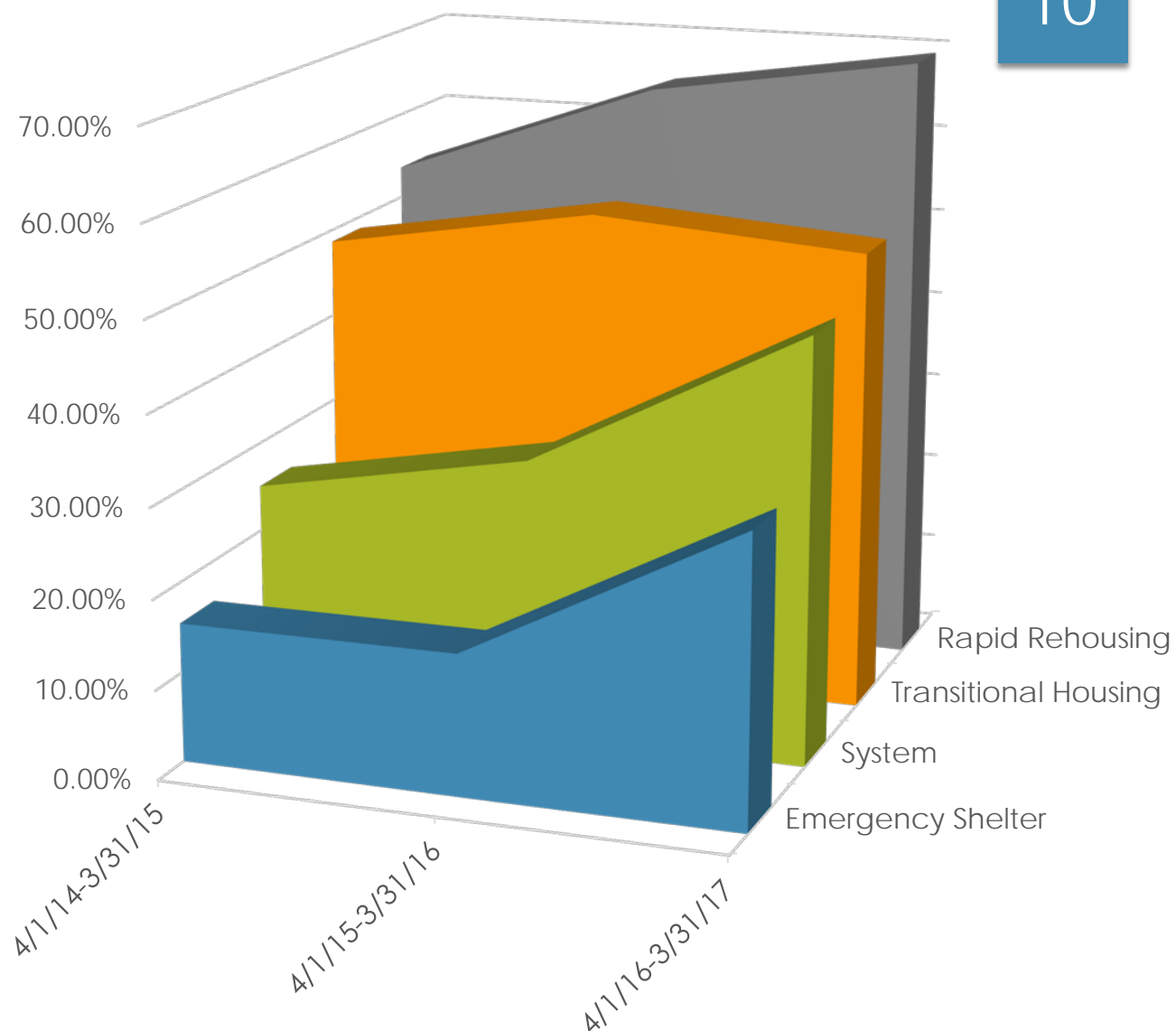


# System Performance Measures

MEASURING THE IMPACT OF  
PROGRAMS AND SYSTEM  
IMPROVEMENTS

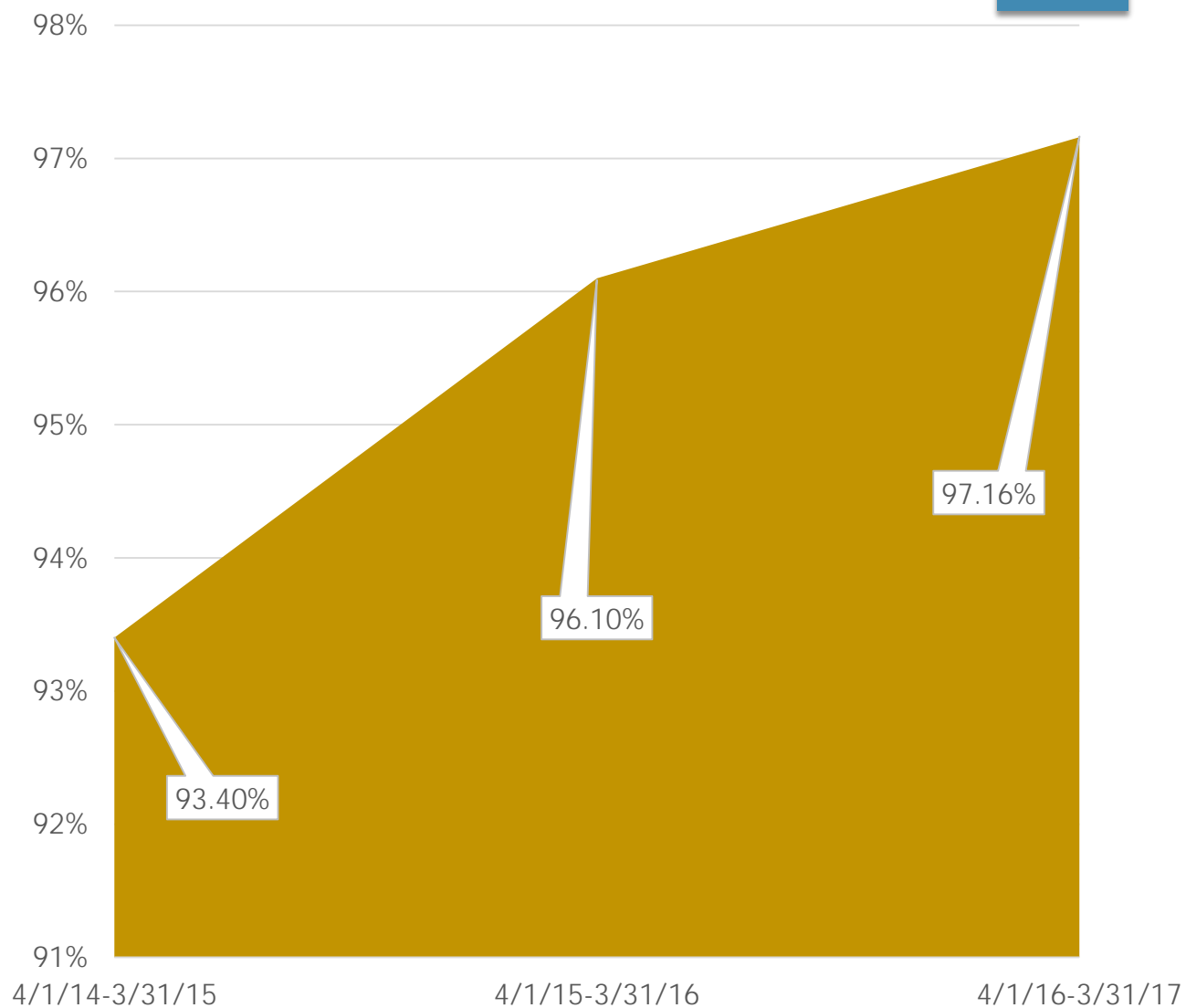
## Percentage of Exits to Permanent Housing Destinations

How many people are in a long-term housing situation when they leave temporary housing programs?



## Permanent Housing Retention

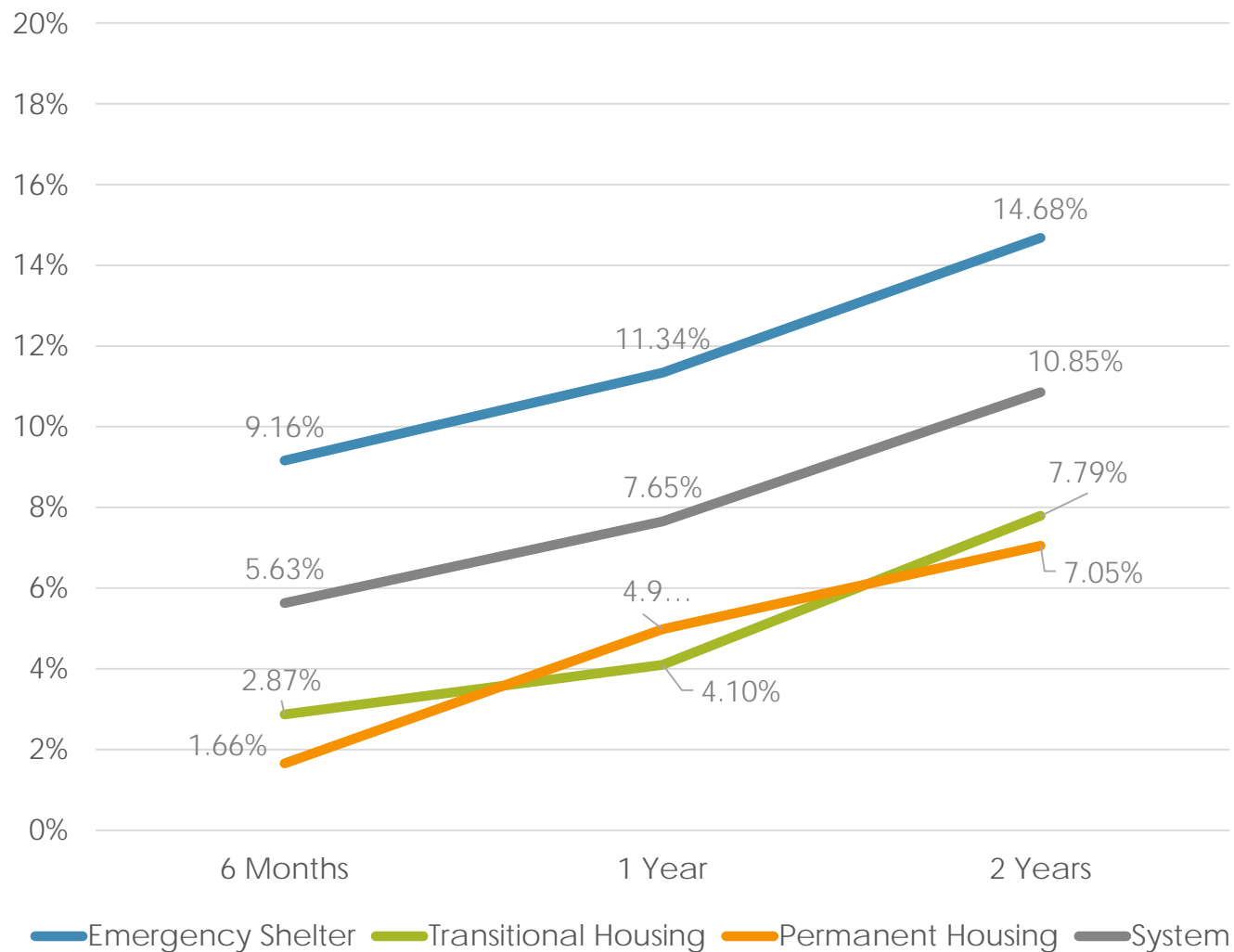
*How many people were still housed in a Permanent Supportive Housing program or exited to a stable housing situation?*



## Recidivism

How many people returned to homelessness after 6 months, 1 year, or 2 years?

*Chart looks at people who were housed from April 2014 through March 2015*



# Planned Activities

2017 AND BEYOND

## Do More of What Works

- ▶ Increase Permanent Supportive Housing opportunities
- ▶ Increase Outreach to homeless individuals
- ▶ Increase Rapid Rehousing programming for individuals and families involved in the criminal justice system



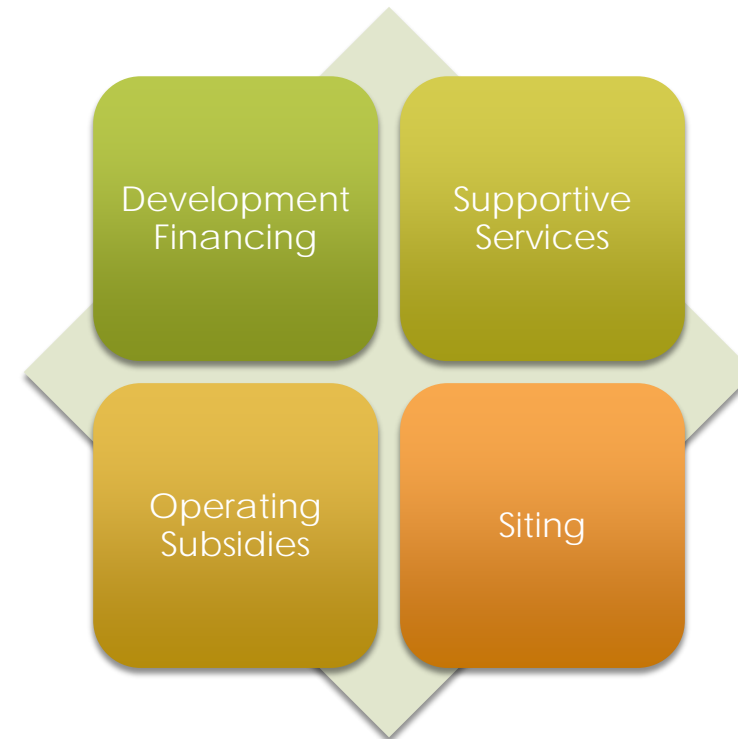
## Implement New Initiatives

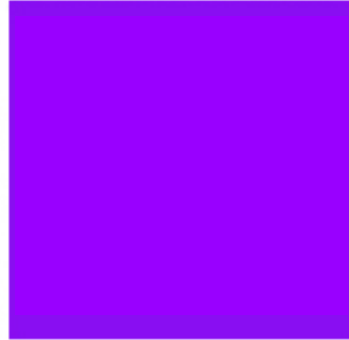
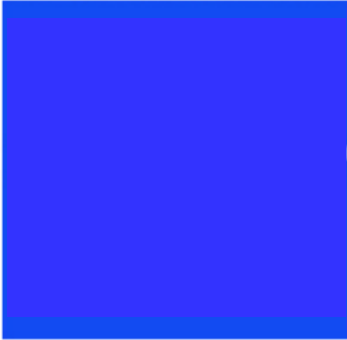
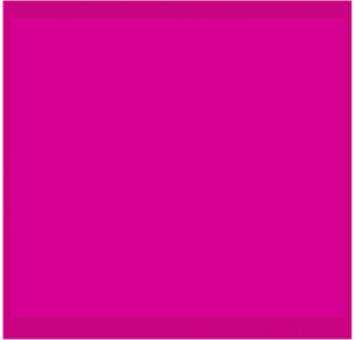
- ▶ Increase focus on Youth and Families
  - Homelessness Prevention System Demonstration
  - School-linked Rapid Rehousing
  - Rapid Rehousing for Survivors of Violence and Human Trafficking
- ▶ Rapid Rehousing for Individuals
- ▶ Employment Initiative

## Build Housing

Goal: 4,800  
constructed or  
financed in 10 years

- ▶ Implement Housing Bond
  - First issuance of \$317 million in September 2017
- ▶ Housing Ready Communities Campaign
- ▶ Estimated 120-140 developments needed to achieve goal





Questions?