

Watersheds Capital Improvement Program FY 2017-18 Progress Report

SCVWD Board of Directors
April 10, 2018



FY2017-18 Key Watersheds Capital Projects' Status Report

1. Almaden Lake Improvements

Total Estimated Cost: \$4.6M



Mid-Year Progress Report:

- 30% restored creek design - complete
- Water source options analysis - complete
- Draft EIR preparation - ongoing

FY19 Outlook:

- Complete 30% design for lake water source
- Complete draft EIR and conduct public meeting
- Finalize EIR



FY2017-18 Key Watersheds Capital Projects' Status Report

2. Stream Stewardship Feasibility Studies

Total Estimated Cost: \$2.3M



Mid-Year Progress Report:

- SC County Parks agreement for Ogier Ponds completed
- Initiated contract for water budget/recharge for Ogier Ponds
- Draft feasibility report preparation - ongoing
- Initiated planning for Stevens Creek Fish Passage and Metcalf Ponds

FY19 Outlook:

- Continue Stevens Creek and Metcalf Pond studies



FY2017-18 Key Watersheds Capital Projects' Status Report

3. Bolsa Road Fish Passage Improvements

Total Estimated Cost: \$2.2M



Mid-Year Progress Report:

- Submitted UPRR encroachment permit application and engineering review
- Initiated CEQA for roughened channel design
- Explored geomorphic alternative that enhances stream restoration
- Reconfirmed NMFS and VHA endorsement of project

FY19 Outlook:

- Complete 100% PS&E with permits from resource agencies and UPRR easement agreement in place
- Prepare project advertisement

FY2017-18 Key Watersheds Capital Projects' Status Report

4. Coyote Creek Flood Protection Project, Montague Expy. to Tully Rd.

Total Estimated Cost: to be determined



Mid-Year Progress Report:

- Temporary levee/berms constructed to protect Rock Springs community
- Hydrology/hydraulic modeling underway
- Problem definition report being developed
- Community outreach plan completed
- Memorandum of Agreement (MOA) with USACE agreed

FY19 Outlook:

- Conduct public outreach
- Perform conceptual alternatives analysis
- Begin development of Chief's Report



FY2017-18 Key Watersheds Capital Projects' Status Report

5. San Francisquito Creek, San Francisco Bay to Searsville Dam

Total Estimated Cost: \$58.9M



After



Before

Mid-Year Progress Report:

- Bay to Hwy 101
 - Completed about 4,000 feet of floodwall
 - Completed about 1,000 feet of new levee
 - Excavated sediment and degraded existing levee from East Bayshore Rd to Geng Rd
- Hwy 101 to El Camino Real
 - Continued preparation of the Environmental Impact Report (EIR)

FY19 Outlook:

- Bay to Hwy 101 - complete floodwall construction and complete a significant portion of the new levee construction;
- Hwy 101 to El Camino Real - identify Tentatively Selected Plan and draft EIR

FY2017-18 Key Watersheds Capital Projects' Status Report

6. Permanente Creek, San Francisco Bay to Foothill Expressway

Total Estimated Cost: \$85.2M



Mid-Year Progress Report:

- Channel Improvement construction contract awarded - May 2017
- Completed 1st year construction of McKelvey Park and Rancho San Antonio detention basins & Permanente Creek Channel Improvement - Dec 2017

FY19 Outlook:

- Continue Year 2 construction of all three phases of Permanente Creek Flood Protection Project.

Santa Clara Valley
Water District

Attachment 1
7 of 21



FY2017-18 Key Watersheds Capital Projects' Status Report

7. Lower Berryessa Creek, Phase 2 - Abel St. to E. Calaveras Blvd.

Total Estimated Cost: \$76.2M



Mid-Year Progress Report:

- Phase 2A (Abel St. to E. Calaveras Blvd.):
 - Completed portion from N. Milpitas Blvd to E. Calaveras Blvd ~ 3,000 feet
 - Installed 1.7 acres of riparian plantings
- Phase 2B (Lower Calera Creek):
 - Obtained consultant services for structural design
 - 60% design completed

FY19 Outlook:

- Finish construction of Phase 2A portion between N. Milpitas Blvd. and Abel St. (~3,000 feet) by Dec 2018
- Complete Phase 2B design by Aug 2018



FY2017-18 Key Watersheds Capital Projects' Status Report

8. Upper Berryessa Creek, E. Calaveras Blvd. to I-680

Total Estimated Cost: \$59.2M



Mid-Year Progress Report:

- All channel work completed - Dec 2017
- Approx. 90% of Montague Expy. bridge completed (VTA)

FY19 Outlook:

- Complete Montague Expy. Bridge by summer of 2018 (VTA)
- Corps to complete O&M Manual and turn over maintenance to District by summer 2018
- Ribbon cutting ceremony being planned with Corps.

Santa Clara Valley
Water District

Attachment 1
9 of 21



FY2017-18 Key Watersheds Capital Projects' Status Report

9. Guadalupe River, Upper, SPRR to Blossom Hill Rd. (R7-12)

Total Estimated Cost: \$182.3M



Mid-Year Progress Report:

- Acquiring Elks Lodge property in Reach 7 and several properties in Reach 9
- Mitigation planting at Reaches 10B & 12 completed - March 2018

FY19 Outlook:

- Pending funding approval, USACE plans to complete design for Reaches 7 & 8
- Acquire 3 remaining properties in Reaches 7 & 8
- USACE to award & construct Willow St. and Alma Ave. bridges

FY2017-18 Key Watersheds Capital Projects' Status Report

10. Watersheds Asset Rehabilitation Program (27 Maintenance Projects)

Total Estimated Cost: \$132.0M



El Camino Storm Drain Erosion Repair Project

Mid-Year Progress Report:

- El Camino Real Storm Drain Erosion Repair completed – Dec 2017
- Began advertising for Coyote Creek Levee Rodent Damage Repair, U/S of SR 237 and D/S of SR 237

FY19 Outlook:

Complete construction in summer 2018:

- Stevens Creek Bank and Access/Trail Road Repair, D/S of El Camino Real
- Coyote Creek Levee Rodent Damage Repair, U/S of SR 237
- Coyote Creek Levee Rodent Damage Repair, D/S of SR 237
- Uvas Creek Levee Animal Damage Rehabilitation Project, Miller Ave. to Gilroy Sports Park

FY2017-18 Key Watersheds Capital Projects' Status Report

10a. Stevens Creek Bank Erosion Repair Emergency Project, D/S of El Camino Real

Total Estimated Cost: \$2.8M



Mid-Year Progress Report:

- Reconstructed Stevens Creek Emergency Bank Repair – Completed in Nov 2017
- Permanent Bank Repair – To be constructed during summer of 2018
- Cost re-imburement from FEMA and CAL OES

FY19 Outlook:

Complete construction in summer 2018

Santa Clara Valley
Water District

Attachment 1
12 of 21



FY2017-18 Key Watersheds Capital Projects' Status Report

11. San Francisco Bay Shoreline EIA 11 & EIAs 1-10

Total Estimated Cost: \$42.3M



Mid-Year Progress Report:

- EIA 11 – Reach 1
 - 90% levee design completed – Dec 2017
 - Received RWQCB phased Order – Dec 2017
 - Received BCDC phased CD - Jan 2018
 - LERRDs coordination - Ongoing
 - Reaches 2 & 3 levee design began
- EIAs 1-10
 - EIAs 4 & 5, Mountain View coordination with SBSRP for Construction - Ongoing
 - EIA 10, Pond A8 coordination with SBSRP for planning - ongoing

FY19 Outlook:

- District to secure Reach1 LERRDs and dirt broker for levee and ecotone fill material
- USACE complete Reach 1 levee design
- EIAs 1-10 - develop cost share MOU for EIA 4 & 5 levee

FY2017-18 Key Watersheds Capital Projects' Status Report

12. Llagas Creek, Upper, Buena Vista Ave. to Llagas Rd.

Total Estimated Cost: \$171.8M



Mid-Year Progress Report:

- Right of way
 - Phase 1: 2 acquisitions pending
 - Phase 2: ~12 acquisitions remaining
 - Temporary construction easements pending
- 100% Phase 1 (P&S) completed
- 95% Phase 2 (P&S) completed
- Resource agency permits
 - CDFW 1600 permit received - Jan 2017
 - RWQCB 401 permit received – July 2017
 - USACE 404 permit - Pending

FY19 Outlook:

- USACE to release final EIS/ROD
- Receive USACE 404 permit
- Advertise/award Phase 1 for construction



FY2017-18 Key Watersheds Capital Projects' Status Report

13. Sunnyvale East and West Channels

Total Estimated Cost: \$68.4M



Mid-Year Progress Report:

- ROW
 - C. of Sunnyvale - 4 easements completed
 - PG&E easement completed
 - Temporary construction easements pending
- 95% design (P&S) completed
- Resource Agency Permits
 - Submit JARPA application - Completed
- Proposed Mitigation
 - SF Bay wetland mitigation bank
 - Google, LLC. Enhancement Project

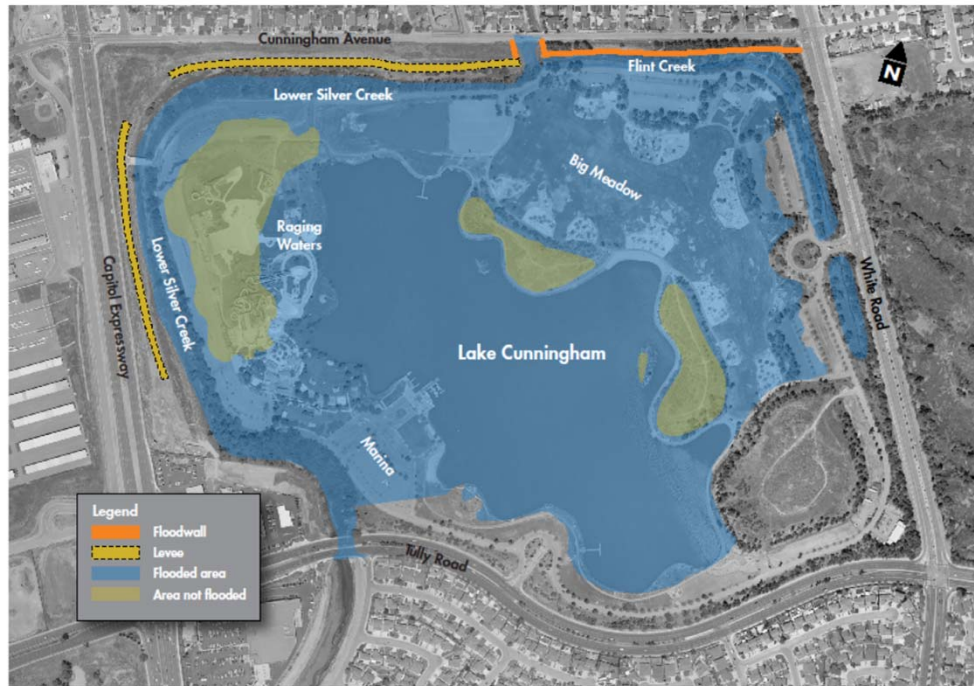
FY19 Outlook:

- Receive resource agency permits
- Advertise/award project for construction

FY2017-18 Key Watersheds Capital Projects' Status Report

14. Cunningham Flood Detention Certification

Total Estimated Cost: \$11.6M



Mid-Year Progress Report:

- 90% Design completed – Dec 2017
- CEQA Document completed – January 2018
- Final design completed – March 2018

FY19 Outlook:

Obtain regulatory permits (CDFW, RWQCB) and advertise for construction by April 2018.



FY2017-18 Key Watersheds Capital Projects' Status Report

15. Palo Alto Flood Basin Tide Gate Structure Replacement, Lower Peninsula

Total Estimated Cost: \$12.4M



Mid-Year Progress Report:

- Formed new project team

FY19 Outlook:

- Draft EIR – summer 2019
- Final EIR – fall 2019
- Regulatory permits – spring 2020



FY2017-18 Key Watersheds Capital Projects' Status Report

16. Lower Penitencia Creek Improvements, Berryessa Creek to Coyote Creek

Total Estimated Cost: \$33.1M



Mid-Year Progress Report:

- Final EIR certified - Oct 2017
- 60% design completed - Apr 2017
- Coordinate with Milpitas, Caltrans, resource agencies - ongoing

FY19 Outlook:

- Complete design
- Receive resource agency permits
- Acquire right-of-way and easements
- Advertise and award project for construction

Santa Clara Valley
Water District

Attachment 1
18 of 21



FY2017-18 Key Watersheds Capital Projects' Status Report

17. Upper Penitencia Creek, Coyote Creek to Dorel Dr.



Mid-Year Progress Report:

- Planning phase work underway:
 - Hydrology model completed
 - New floodplain model developed
 - Landscape concepts workshop held and concept vision report nearly completed

FY19 Outlook:

- Conduct detailed outreach
- Develop alternatives
- Complete Vision Document and Planning Study Report



FY2017-18 Key Watersheds Capital Projects' Construction Schedule

Construction Schedule

Design and Construction Schedule, Fiscal Years 2017 - 2028

17 18 19 20 21 22 23 24 25 26 27 28

Llagas Creek, Upper & Design												
Berryessa Creek, Lower Penitencia Ck to Calaveras Blvd-Phase												
Lower Penitencia Ck Improvements, Berryessa to Coyote Creeks												
Guadalupe River, Upper SPRR to Blossom Hill Road (R7-12)												
Berryessa Creek, Calaveras to I-680												
San Francisquito Creek, San Francisco Bay to Searsville Dam												
Permanente Creek, SF Bay to Foothill Expressway												
San Francisco Bay Shoreline EIA 11 & EIAs 1-10												
Sunnyvale East and West Channels												

Design Phase

Construction Phase

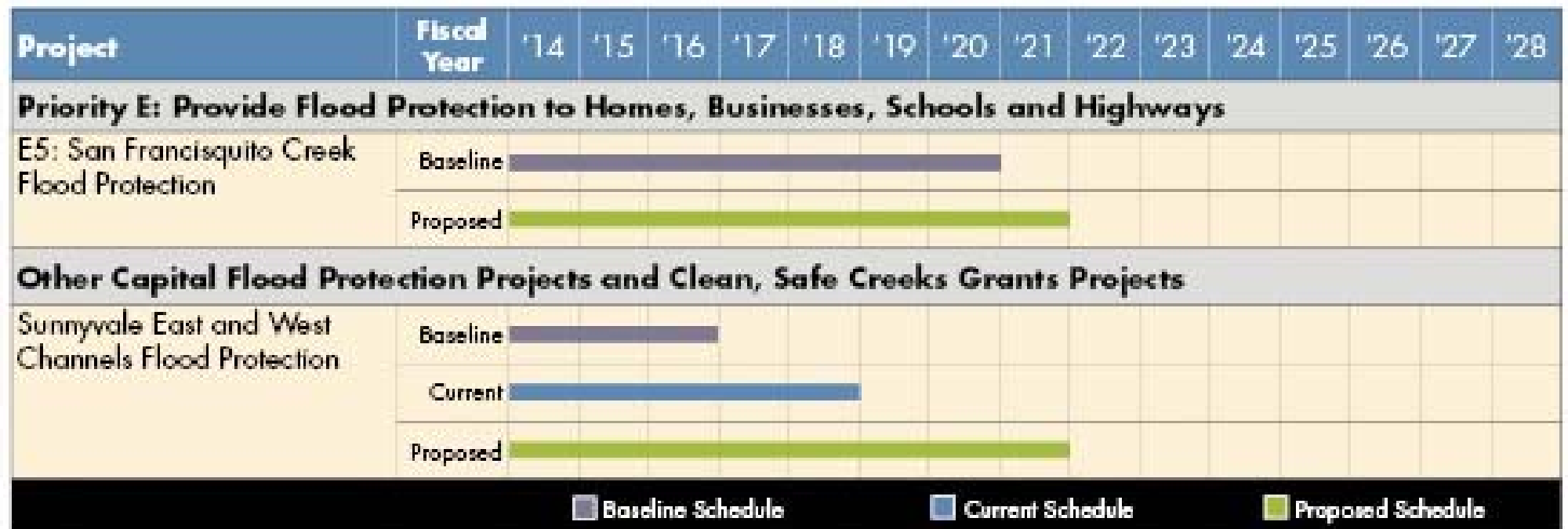
Santa Clara Valley
Water District

Attachment 1
20 of 21



FY2017-18 Key Watersheds Capital Projects' Status Report

SCW Program Schedule Adjustments



THIS PAGE INTENTIONALLY LEFT BLANK