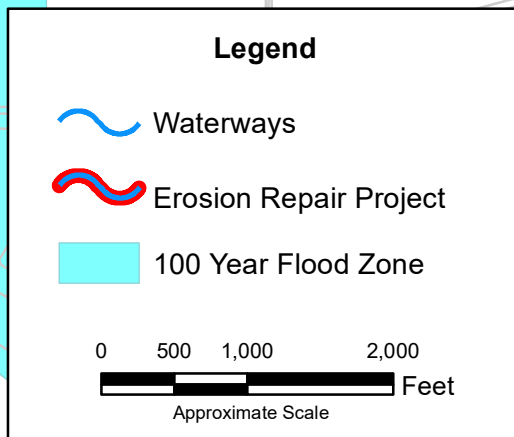
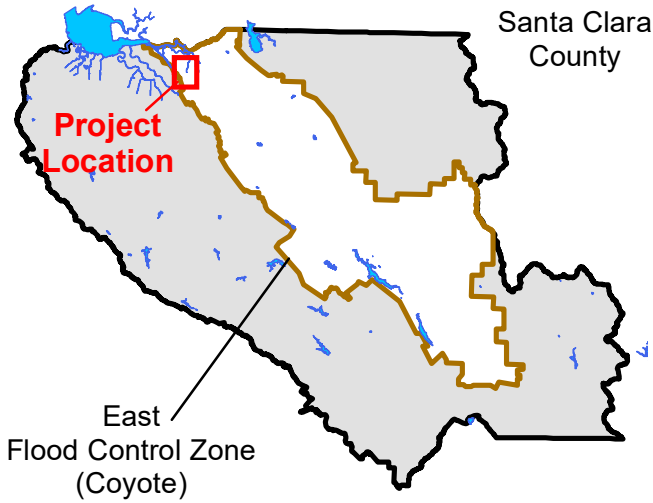


Coyote Creek

Levee Rodent Damage Repair Project (Upstream of SR 237)



Santa Clara Valley Water District



GIS themes are for illustration and general analysis purposes only and are not accurate to surveying or engineering standards. Information is not guaranteed to be accurate, current or complete and use of this information is your responsibility.

THIS PAGE INTENTIONALLY LEFT BLANK