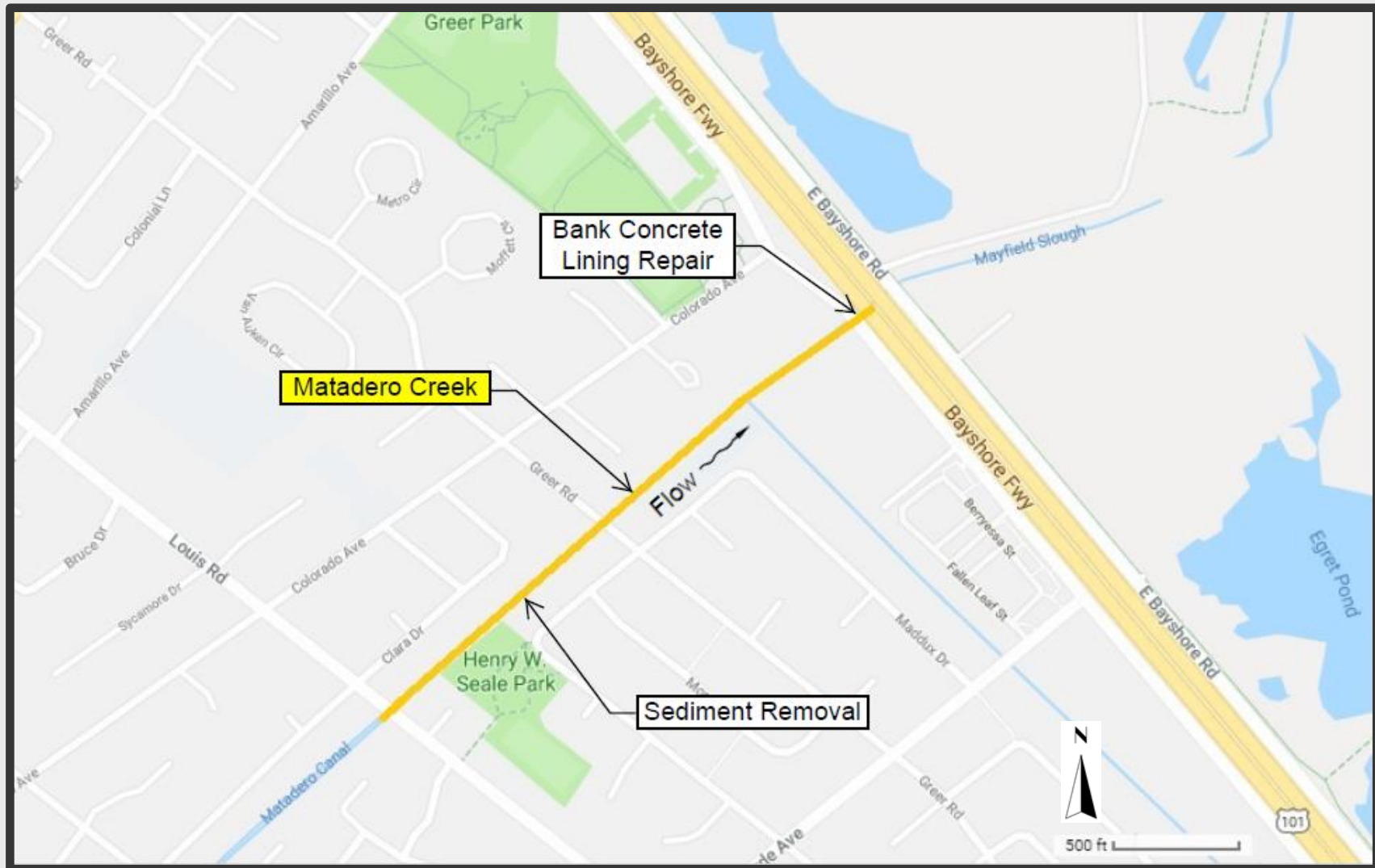
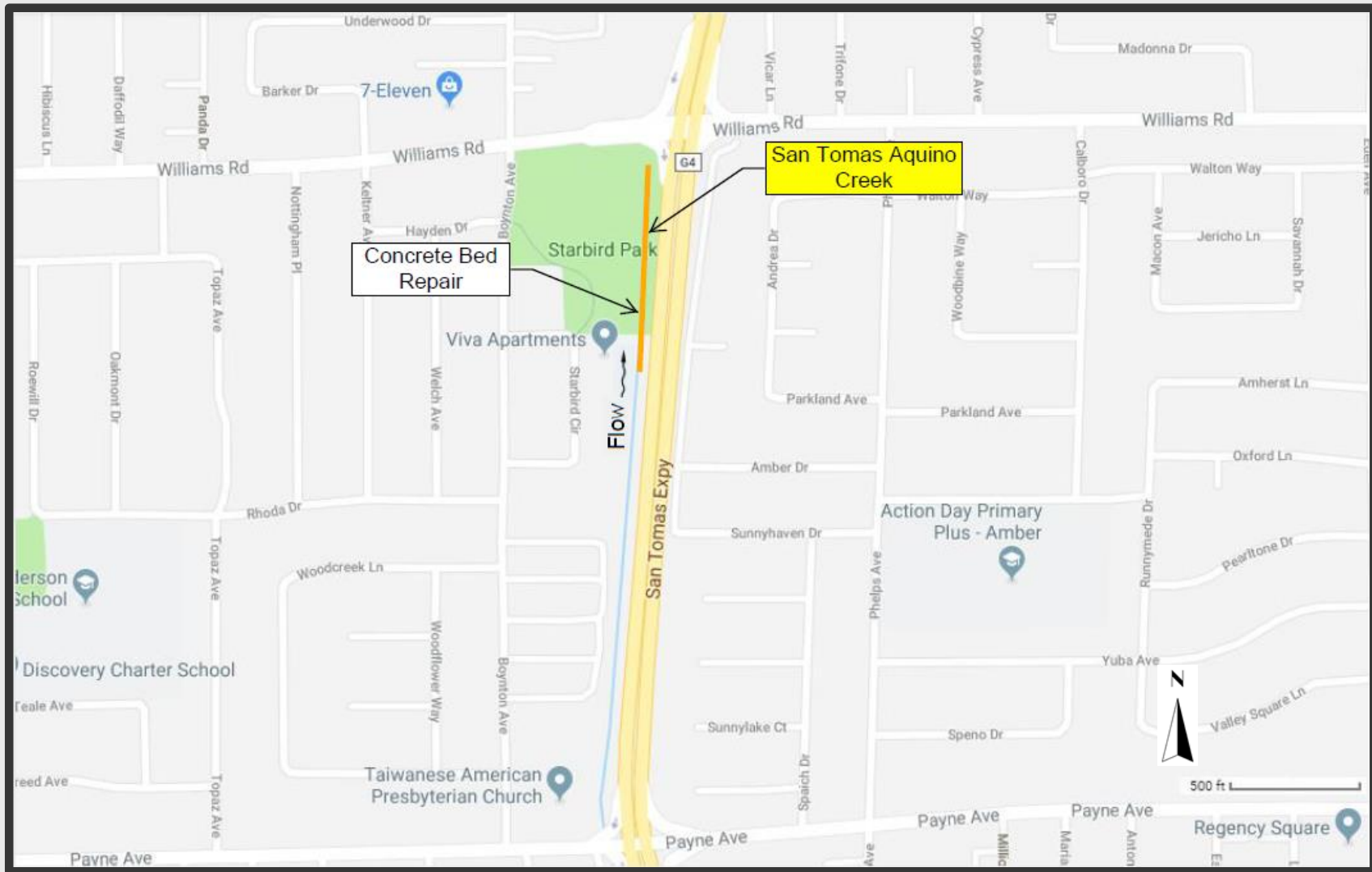


Project Location – Matadero Creek



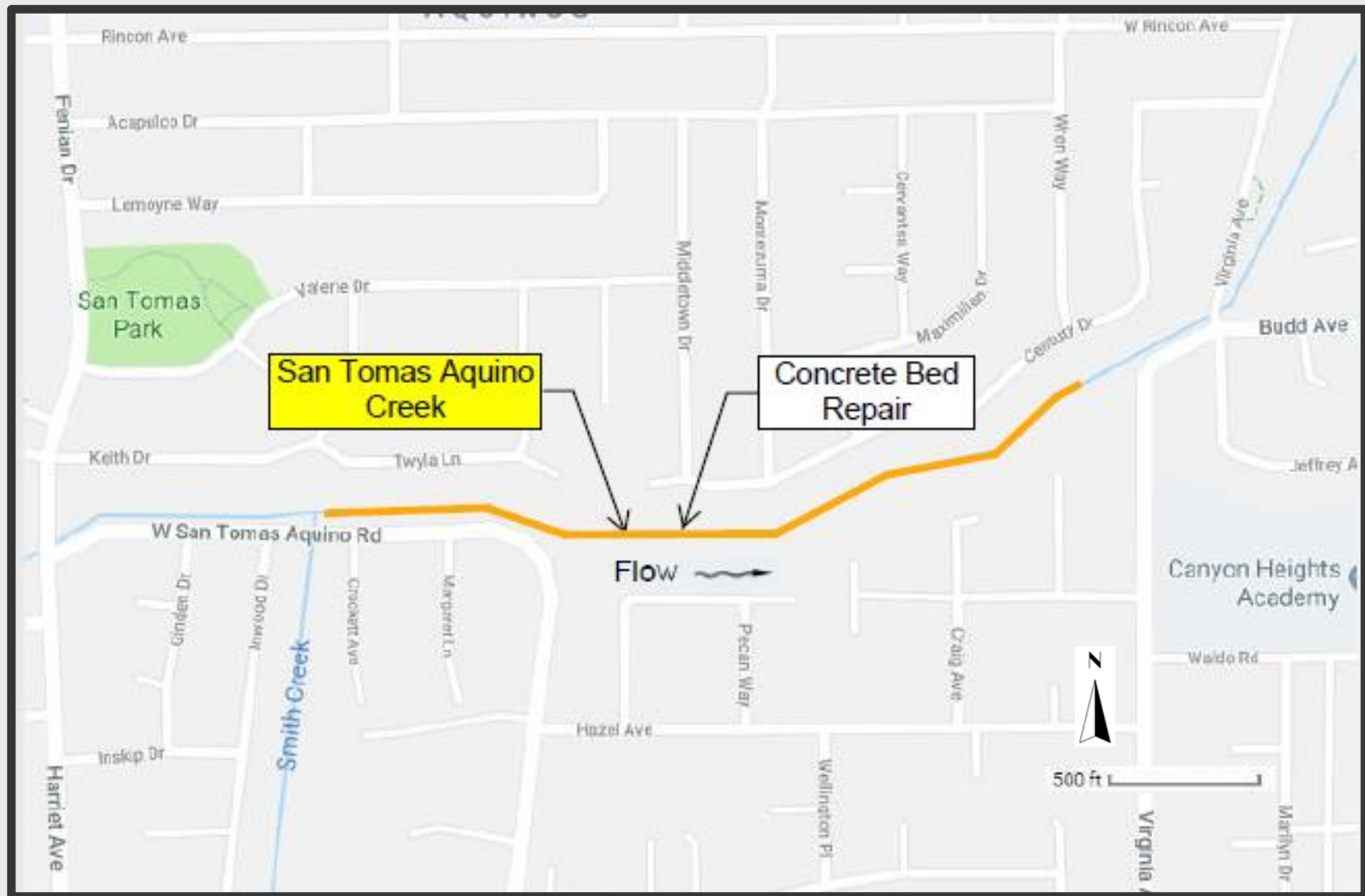
Matadero Creek Sediment Removal and Erosion Repair Project – City of Palo Alto

Project Location – San Tomas Aquino Creek Segment 1



San Tomas Aquino Creek Erosion Repair Project Downstream – City of San Jose

Project Location – San Tomas Aquino Creek Segment 2



San Tomas Aquino Creek Erosion Repair Project Upstream – City of Campbell and City of San Jose

THIS PAGE INTENTIONALLY LEFT BLANK