

## Advancing Potable Reuse Initiative

### Purpose and Goal

Under the **Advancing Potable Reuse Initiative**, the Water Research Foundation (WRF) will:

- Raise funds to conduct research to advance potable reuse in the U.S.
- Establish potable reuse – indirect and direct potable reuse – as a solution to the nation’s water supply challenges.
- Establish potable reuse as a reliable and sustainable component of integrated water management.

#### WRF proposes:

- Using **\$3 million** from the California State Water Resources Control Board (SWRCB) for potable (\$1.5M for non-potable).
- Raising **\$4 million** in matching funding from utilities and consulting firms across the U.S.

### Background and Approach

WRF will build on the 2012-2016 Direct Potable Reuse (DPR) Research Initiative, which produced research that addressed major knowledge gaps.

A number of potable reuse research needs remain that address regulatory, scientific, and technical questions for indirect potable reuse (IPR) and DPR.

The proposed initiative will address questions in states across the U.S. that are developing potable reuse regulations and/or implementing projects.

The initiative will address the research identified by the California SWRCB Expert Panel and other sources as needed for the development of DPR regulations.

### Accomplishments of the DPR Initiative (2012-2016)

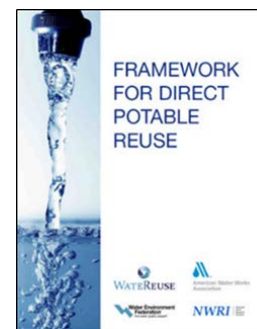
WRF, in partnership with WaterReuse California, launched the DPR Initiative in 2012 to advance DPR as a water supply option in California. The California legislature mandated the investigation of the feasibility of developing water recycling criteria for DPR.

Based on **\$6 million** of support from utilities, consulting firms, and manufacturers, over **\$24 million** of research was conducted under the initiative.

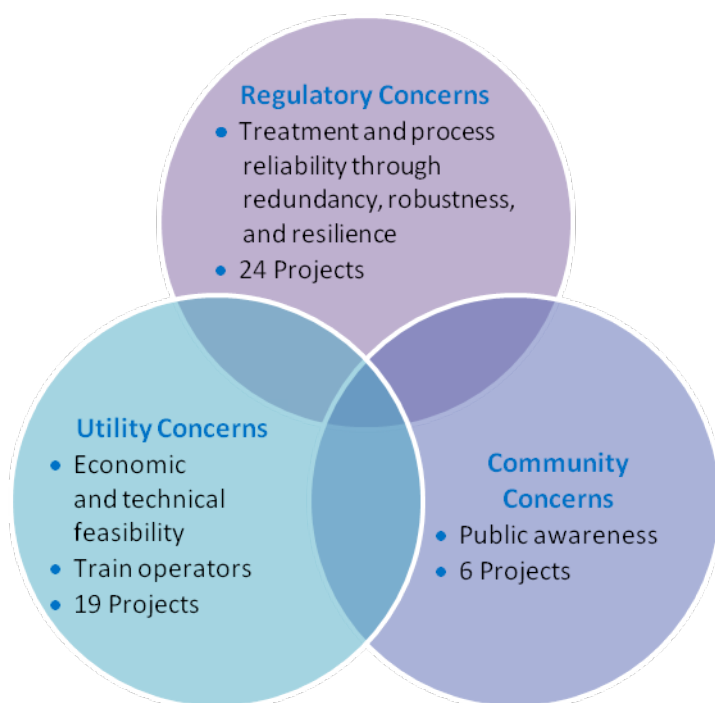
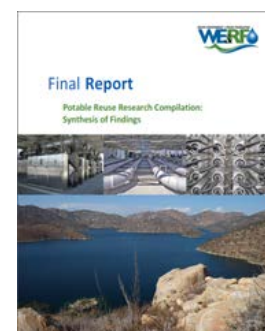
Under the initiative, 34 DPR research projects were funded that addressed regulatory, utility, and community topics. The research results are available online.

Documents published under the initiative included the following:

- The **Framework for Direct Potable Reuse (2015)** provides a comprehensive overview of the key elements that make up a DPR program and serves as a key resource on the topic of potable reuse.



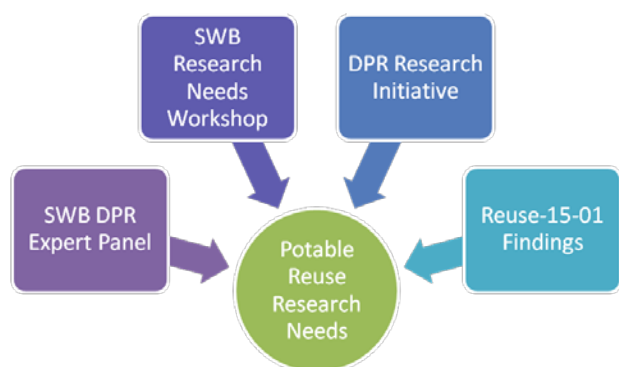
- The **Potable Reuse Research Compilation: Synthesis of Findings (Reuse-15-01, 2016)** summarizes and synthesizes research results from the 34 DPR Research Initiative projects into a cohesive document.



## Current Needs and Research Process

Recent activities have resulted in a range of research priorities for potable reuse, including:

- SWRCB 2015 Research Workshop
- SWRCB Expert Panel
- DPR Research Initiative
- Synthesis of DPR Research Report (Reuse-15-01)



## Proposed Process and Timing

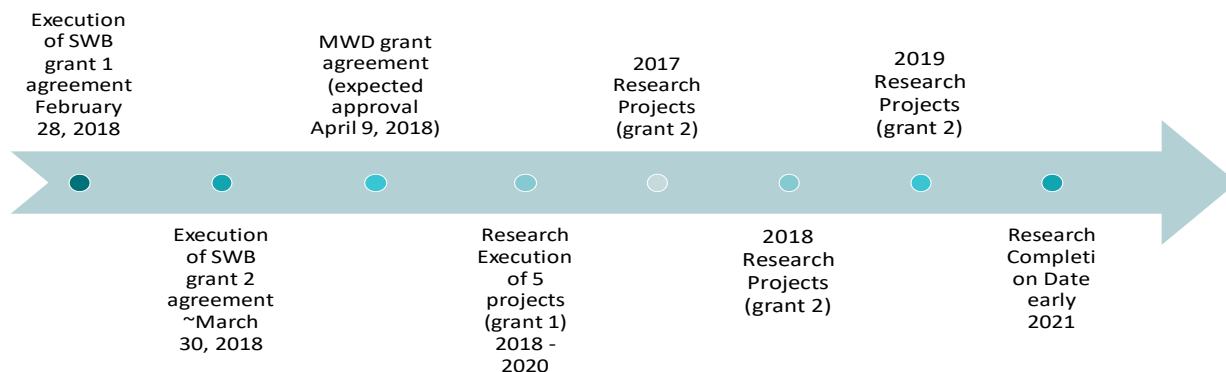
<b>Early 2018</b>	Finalize funding agreement with the SWB.
<b>2017-2018</b>	Meet with key parties – utilities, consulting firms, and manufacturers – to raise the funding to leverage the SWRCB grant funding.
<b>2017-2019</b>	Define a multi-year research agenda through WRF Research Program process (Research Advisory Council).
<b>2018 to 2020</b>	Commission research projects under the multi-year research agenda.
<b>Quarterly</b>	Convene Principal Investigators to discuss results of ongoing projects.
<b>Biannually</b>	Develop biannual updates on progress of the projects.
<b>Ongoing</b>	Disseminate research results and completed reports.
<b>2020 or 2021</b>	Hold conference highlighting the results of research and the future of potable reuse.

## Advancing Potable Reuse Initiative Fundraising Scope

Under the **Advancing Potable Reuse Initiative**, WRF proposes leveraging the \$4.5M SWB funding with a \$4M match, for a total research sum of \$7.5-8.5M. The goals are to (1) Advance DPR in California, and (2) Support potable reuse regulations and implementation of projects across the country. The match portion is needed to cover: (1) shortfall on Research implementation, (2) WRF Grant administration, Program and project management, and (3) Indirect costs (including tuition).

### Funding Breakdown

	SWB Grant	WRF Initiative	Total
- 5 DPR Expert Panel Projects	\$1.0M	\$1.0M	\$2.0M
- Potable Reuse Research	\$2.0M	\$2.5-3M	\$4.5-5M
- Non-potable reuse research	\$1.5M	\$0-0.5M	\$1.5-2.0M
<b>Total</b>	<b>\$4.5M</b>	<b>\$4.0M</b>	<b>\$8.5M</b>



### Water Research Foundation

1199 North Fairfax Street, Suite 900  
Alexandria, VA 22314

[www.werf.org](http://www.werf.org) and [www.waterrf.org](http://www.waterrf.org)

For more information, please contact:

Julie Minton [jminton@waterrf.org](mailto:jminton@waterrf.org)