

Santa Clara Valley Water District

# FAHCE

## Fisheries and Aquatic Habitat Collaborative Effort

1 | Jun 27, 2018 Joint Board Meeting

### Topics Covered

- FAHCE overview
- Modeling program
- EIR status and update

2 | Jun 27, 2018 Joint Board Meeting

## Goals

About FAHCE

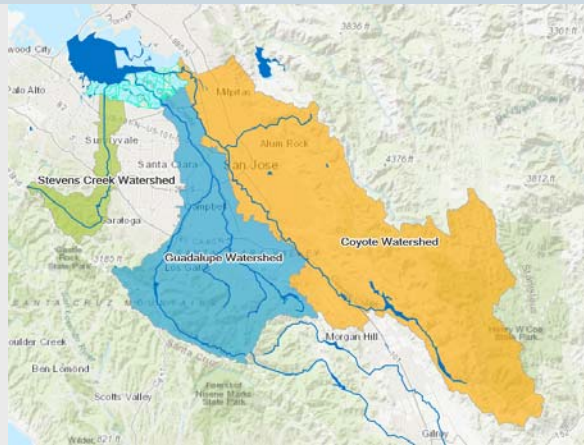
- Resolve water right complaints
- Provide habitat enhancements
- Balance beneficial uses
- Ensure regulatory compliance

3 |

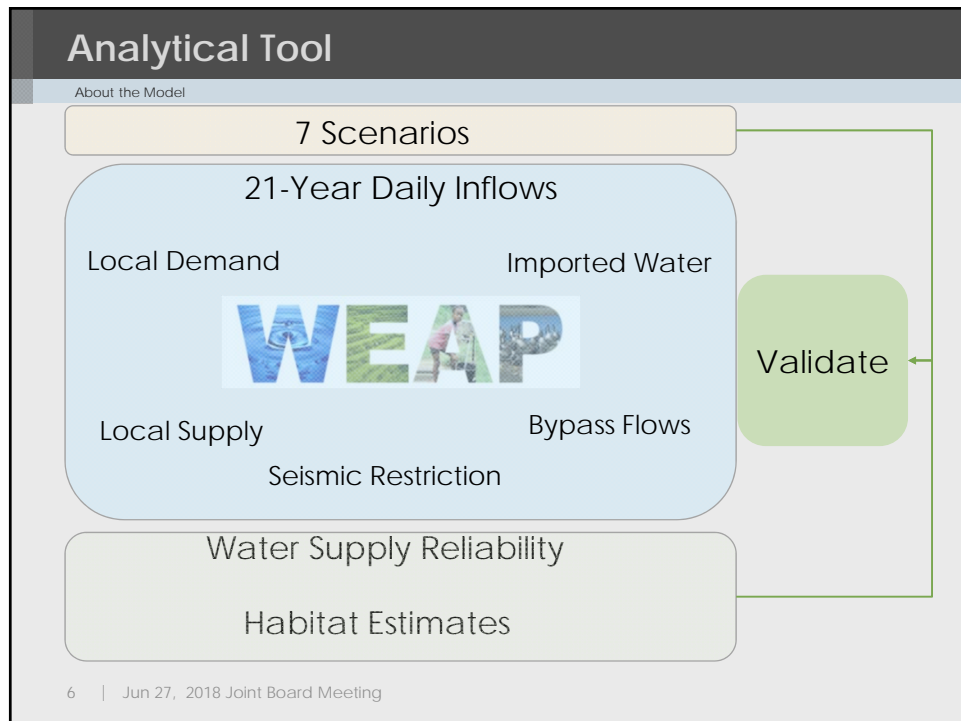
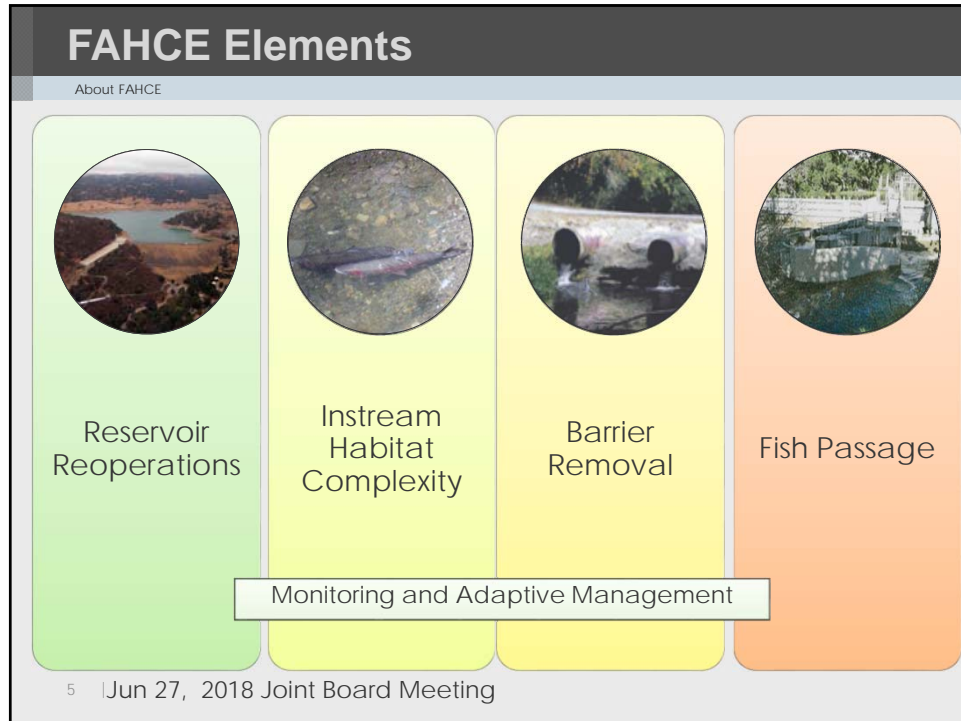
## FAHCE Overview

About FAHCE

- ▶ Three watersheds
- ▶ 500 square miles
- ▶ 100 miles of creek
- ▶ Two fish species
- ▶ 10 Initialing Parties
- ▶ 15 water rights change petitions

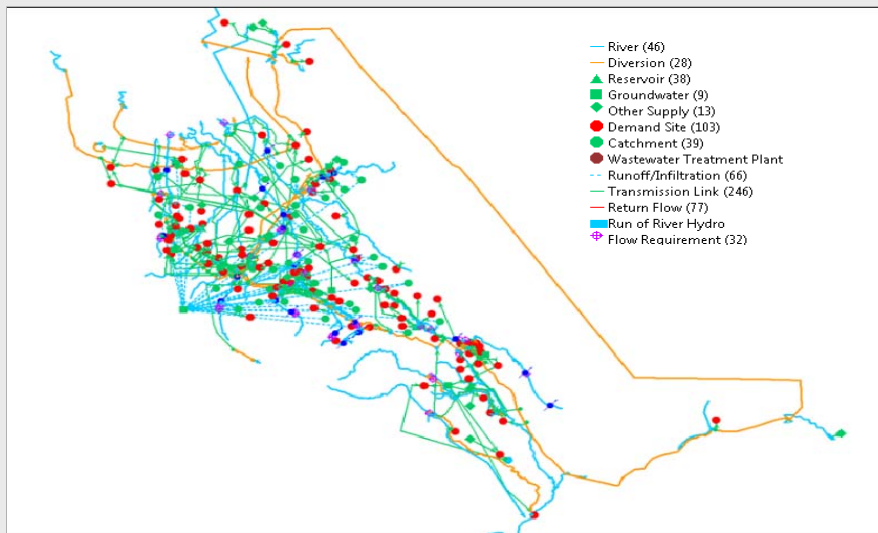


4 | Jun 27, 2018 Joint Board Meeting



## Model Complexity

About the Model



7 | June 27, 2018 Joint Board Meeting

## Model Complexity by the Number

About the Model

2	Demand projections
7	Scenarios
100+	Water demand nodes and assumptions
200+	Variables for water supply and demand
4600+	Variables for habitat suitability & availability
37 millions+	Model result values for each scenario

8 | Jun 27, 2018 Joint Board Meeting

## Support Impact Analysis

About the Model

### ► Biological

- Migration
- Spawning and Incubation
- Rearing



### ► Water supply

- Reservoir releases and storage
- Groundwater recharge
- Supply for recharge and service areas
- Carryover

9 | Jun 27, 2018 Joint Board Meeting

## Engagement with Initialing Parties and TWG

Status Update

May 2017	Scenario development
Jun. 2017	Scenario development
Dec. 2017	Scenario development and project update
Mar. 2018	Shared updated model results
Apr. 2018	Follow up on sharing updated model results Requested ideas for improving rule curves
May 2018	Shared ideas for improving rule curves

10 | Jun 27, 2018 Joint Board Meeting

## Next Steps

Status Update

Summer 2018	Model Results and CEQA Alternatives
January 2019	Internal Draft EIR
Spring 2019	Public Draft EIR
Late 2019	Final EIR