

---

# Update on Amendments to State Water Board Bay-Delta Plan

August 28, 2018



## **Water Quality Control Plan for the San Francisco Bay/Sacramento-San Joaquin Delta Estuary**

December 13, 2006

# Presentation agenda



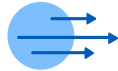
**Overview** of Bay-Delta Plan



Current Phased **Review and Update**



Water Supply and Biological **Assessments**



**Next steps**



Staff **Recommendations**



# *Bay-Delta Plan – authority and purpose*

Pursuant to Porter Cologne Act and federal Clean Water Act

- Establishes **beneficial uses**
- Establishes **water quality objectives** to ensure reasonable protection of beneficial uses
- Establishes a **program of implementation** for achieving the objectives
- **Periodically reviewed**



## *Periodic updates*

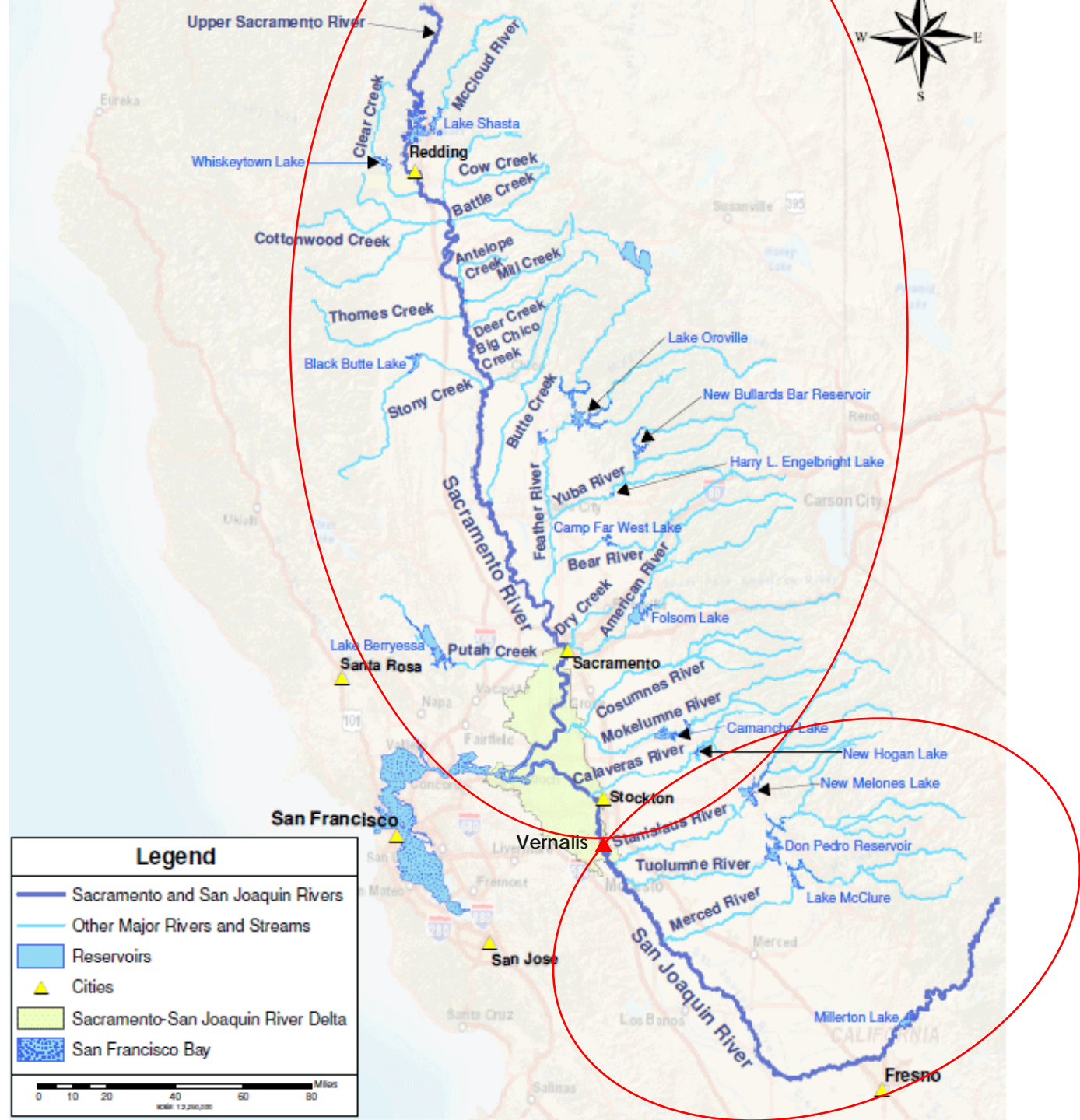
- 1978 Bay-Delta Plan first adopted
- Revised in 1991, 1995, and 2006
- Continuing decline of several native fish species
- Current revision process began in 2008
- SWP & CVP responsible for meeting most objectives

## *Current update is occurring in phases*

Current review and update:

- **Phase 1** – San Joaquin River and tributary flows and southern Delta salinity – started in 2008
- **Phase 2** – Sacramento River and tributary flows, Delta outflow and interior flows, gate operations, and cold water habitat – started in 2012
- **Phase 3** – Implementation – not started

# Sacramento-San Joaquin Rivers and major tributaries



## Phase 1 – proposed amendments

- Requires **40 percent of unimpaired flows** to remain in Tuolumne, Stanislaus and Merced Rivers from Feb-Jun
- Flows can be **adaptively managed** between 30-50 percent of unimpaired
- Flows can be adaptively managed as a **total volume of water**
- **San Joaquin River base flow** requirement
- Undefined **reservoir carryover target**
- **New working group** to recommend biological objectives, adaptive management and operations plans
- Southern Delta **salinity objective relaxed**



## Phase 2 – *proposed amendments*

- Requires **55 percent of unimpaired flows** to remain in Sacramento River and its tributaries and in tributaries to the Delta
- Flows can be **adaptively managed** between 45-65 percent of unimpaired
- Flows can be adaptively managed as a **total volume of water**
- Narrative and numeric inflow-based **Delta outflow** requirement
- Narrative **cold water habitat** objective



## *Phase 2 – proposed amendments (continued)*

- Adopts **requirements from biological opinions** for operation of SWP and CVP including:
  - Fall Delta outflow objective
  - Old & Middle River reverse flow limits
  - Export limits based on San Joaquin River inflow levels
  - Delta Cross Channel gate closures



# Water supply assessments

State Water Board assessment:

Phase 1: **293,000 AF** average system-wide  
supply reduction all years

**624,000-673,000 AF** average  
system-wide supply reduction  
dry and critical years

Phase 2: **2,000,000 AF** average system-wide  
supply reduction



# Water supply assessments

Impacts to Santa Clara County:

Phase 1: **4-15 percent** increase in frequency  
of shortages

**5-19 percent** increase in magnitude  
of shortages

Reduced availability of  
supplemental transfer supplies

Phase 2: Unknown, but likely significant



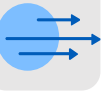
# Biological assessments

- Unimpaired flows are different from historic flows to which **native fish adapted**
- Biological **objectives to be determined**
- **State Water Board shows improvements** to temperature control and floodplain inundation under proposed amendments
- **More water-efficient methods exist** to attain similar or better biological benefits
- Voluntary agreements with **non-flow measures** is best path forward



# Public Comments

- SCVWD
- San Francisco Public Utilities Commission
- State Water Contractors
- CVP South-of-Delta Contractors
- California Departments of Fish & Wildlife and Water Resources
- Tuolumne River Trust
- Conservation Organizations



## Next Steps

- Phase 1, public comment on final proposed amendment – **August 21-22, 2018**
- Phase 1, adoption hearing – **to be determined**
- Phase 2, public comment on proposed changes and environmental document – **late-2018**
- Voluntary settlement agreement negotiations – **ongoing**
- Water rights hearings – **to be determined**

# Staff recommendations

## Summary:

- Receive an update on the State Water Board's proposed amendments
- Direct staff to participate in voluntary settlement agreement discussions



**THIS PAGE INTENTIONALLY LEFT BLANK**