



Santa Clara Valley  
Water District



Coastal  
Conservancy



SANTA CLARA  
COUNTY PARKS

# South San Francisco Bay Shoreline Project District – County Meeting December 13, 2018





# Shoreline EIA 11 Authorized Project

## ✦Total Project Cost: \$177.2 million

- ▶ USACE share is \$73.4 million
- ▶ Local share is \$103.8 million

## ✦Flood Risk Management (FRM)

- ▶ 4-mile long levee with 2 structures
- ▶ 1% coastal protection including 2.59 feet of sea level rise
- ▶ Manages risk for ~2,500 residents, ~3,000 commuters, ~1,100 structures, Regional Wastewater Facility, Alviso Marina County Park

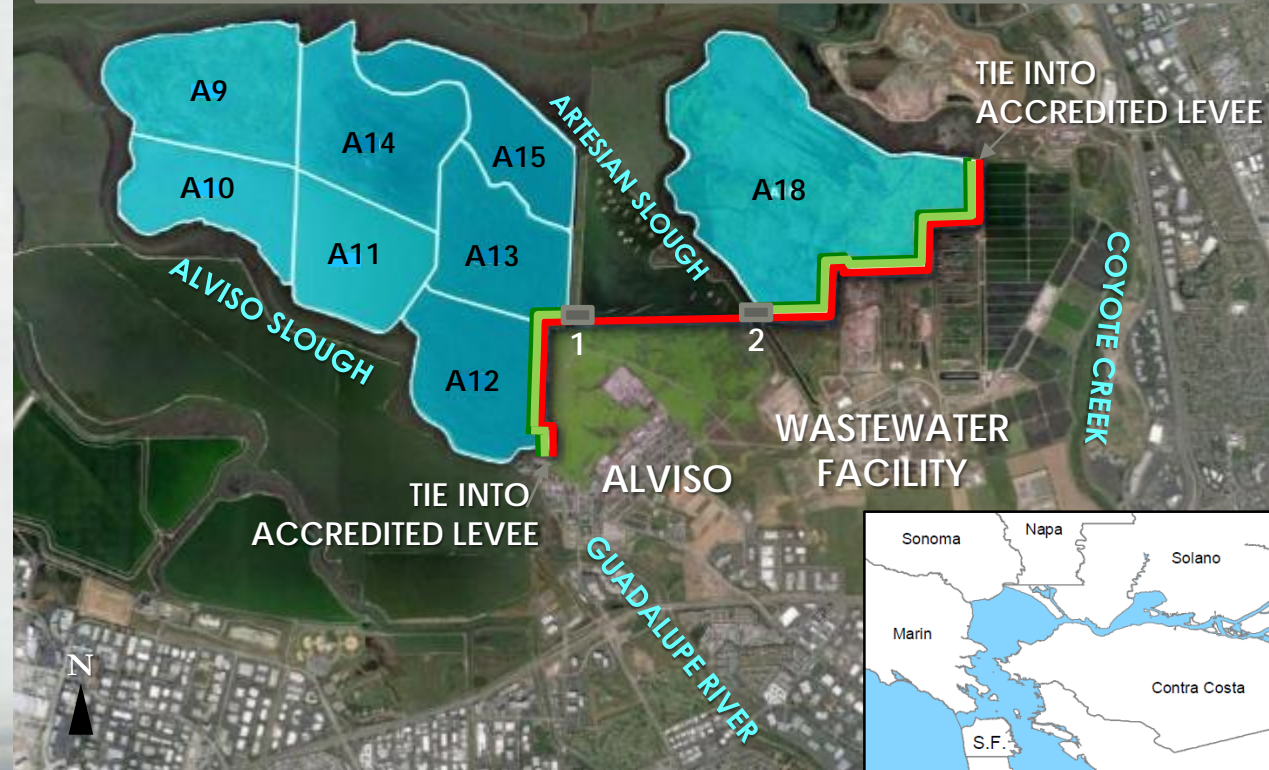
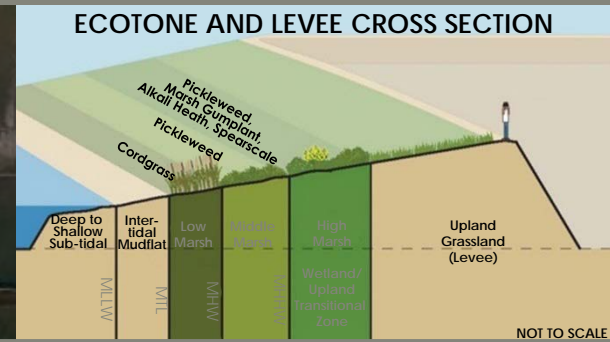
## ✦Ecosystem Restoration

- ▶ 2,900 acres of tidal marsh and related habitat, and ecotone at Ponds A9-15 and Pond A18

## ✦Recreation

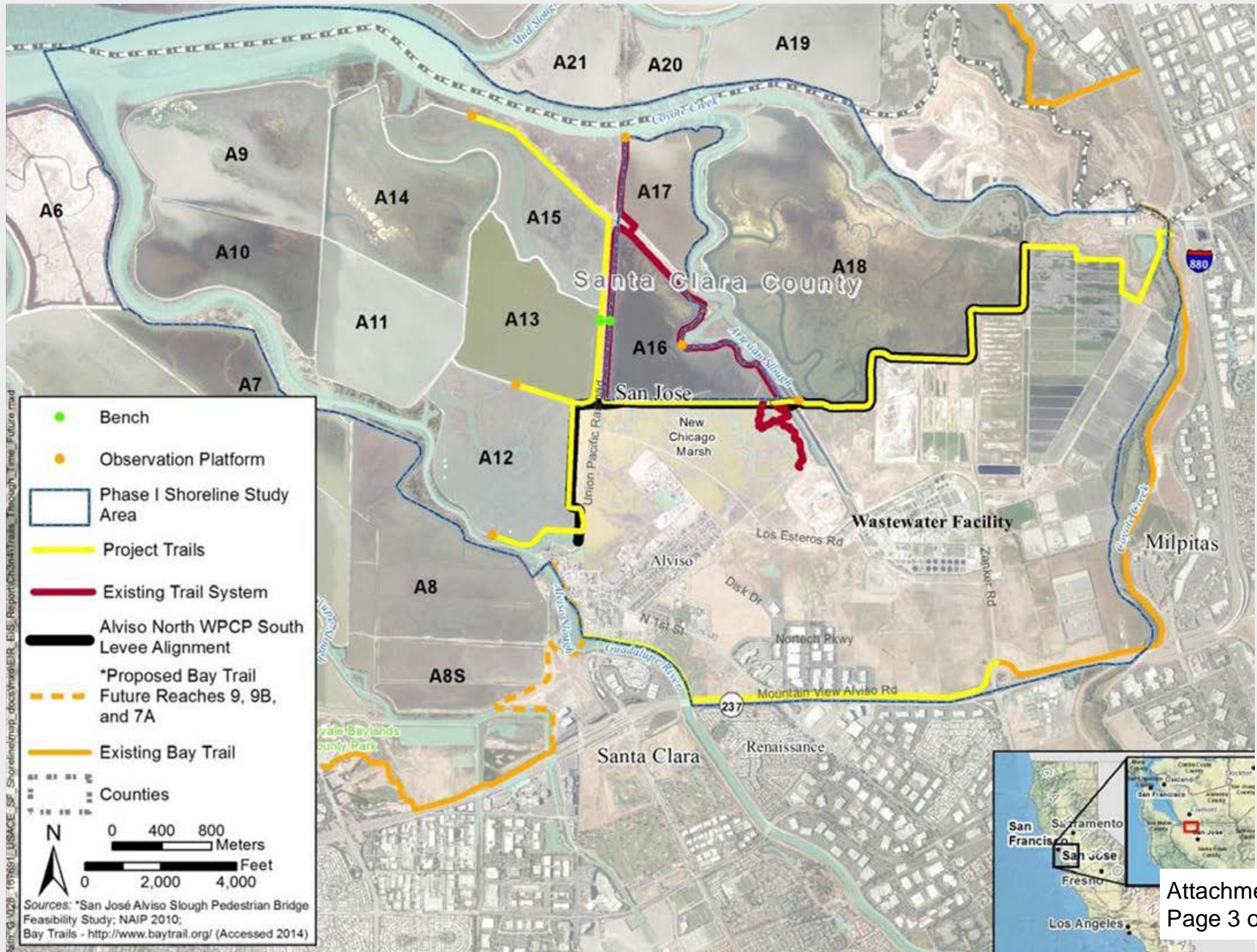
- ▶ Provides key connections to San Francisco Bay Trail & viewpoints

- Levee
- Ecotone (transitional habitat)
- Tidal Marsh Restoration
- 1 Union Pacific Railroad Crossing
- 2 Artesian Slough Tide Gate & Pedestrian Bridge



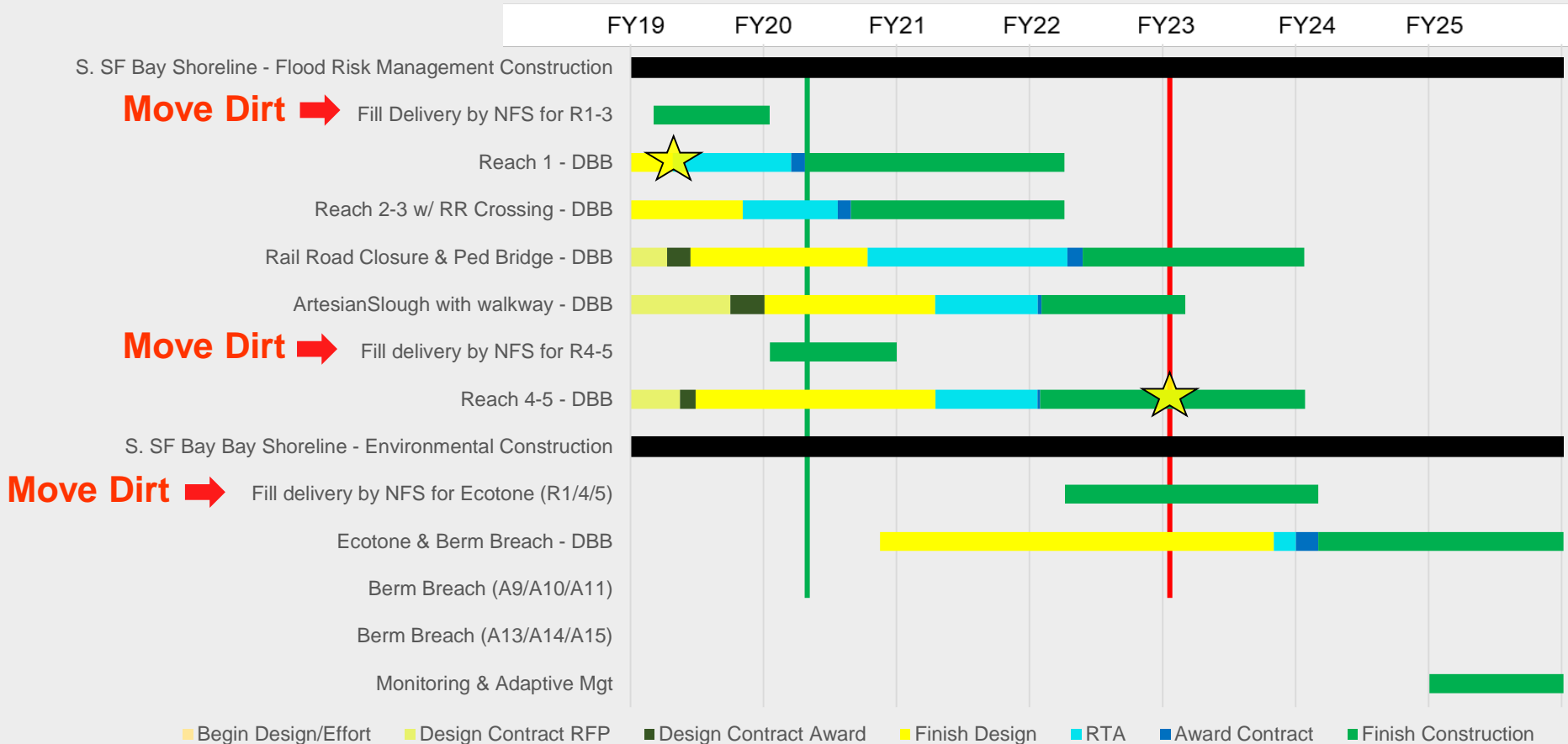


# Shoreline EIA 11 Recreational Elements



# Shoreline EIA 11 Schedule

27 NOV 2018



## Delivery Targets per Implementation Guidelines

Advertise 1st Construct. Contract: Mar 2019 |  
Complete Construction: Jan 2023 |

## Schedule Assumptions

**Real Estate:** Assumes District will be able to obtain all the necessary real estate interests per schedule. This activity has the greatest impact on the schedule to get to project construction award.

## Schedule Constraints

**EIS/EIR** limits fill delivery to 1K cy per day. Approx. 3 years would be required to deliver 1M cy of levee fill material alone. Delivery of fill material should begin per schedule.

**Bay mud conditions** limits the rate of levee construction to occur over 2 years.

# Shoreline EIA 11 Status and Risks

## **Reach 1**

Status – Reach 1 is on track for fill delivery to occur in 2019 and USACE to advertise for construction in March 2019

Risk – Rights of way not fully acquired by March 2019 impacts schedule

## **Reaches 2 & 3 and Temporary Railroad Crossing**

Status – Need to secure railroad permit by September 2019

Risk – Construction of Reaches 2-3 levee will take longer and impacts schedule

## **Reach 4 & 5**

Status – Need to acquire Pond A18 in fee title by December 2019

Risk – rights of way not fully acquired by Dec 2019 impacts schedule

**THIS PAGE INTENTIONALLY LEFT BLANK**