

# Permanente Creek Flood Protection Project (Permanente Creek Channel Improvements)

Notice of Completion of Construction Contract

April 9, 2019



# Presentation Topics

- ▶ Project Description, Objective, and Location
- ▶ Project Construction Costs
- ▶ Construction Photos



# Project Objective

The objective of the Permanente Creek Channel Improvements Project is to:

- Provide channel improvements in certain reaches of Permanente Creek and Hale Creek to contain the 100-year flow;



# Project Description

The Project included the following major items of work:

- ▶ Raising 500 linear feet of levee;
- ▶ Constructing 1,335 linear feet of floodwalls;
- ▶ Deepening and enlarging 1,815 linear feet of existing concrete channel on Permanente and Hale Creek.
- ▶ Replacing the Hale Creek Mountain View concrete culvert with a larger double cell concrete culvert;
- ▶ Filling a dry swale area and replacing a pathway downstream of Amphitheater Parkway.

# Project Location

## Permanente and Hale Creek – Mountain View, Los Altos, CA



Santa Clara Valley  
Water District



# Presentation Topics

- ▶ Project Description, Objective, and Location
- ▶ Project Construction Costs
- ▶ Construction Photos



# Project Costs

## ► Construction:

- \$7,027,917.00 – Contract Award Amount
- \$ 808,223.83 – Contract Change Orders
- \$7,836,140.83 – Final Contract Amount  
(12% increase)

## ► Funding Source:

- Watershed Stream Stewardship Fund – Safe, Clean Water Fund



# Presentation Topics

- ▶ Project Description, Objective, and Location
- ▶ Project Construction Costs
- ▶ Construction Photos





# Construction Photos - Progression



**BEFORE**



Raised Levee North of Amphitheater Parkway



**AFTER**

Santa Clara Valley  
Water District



Attachment 4  
Page 9 of 15



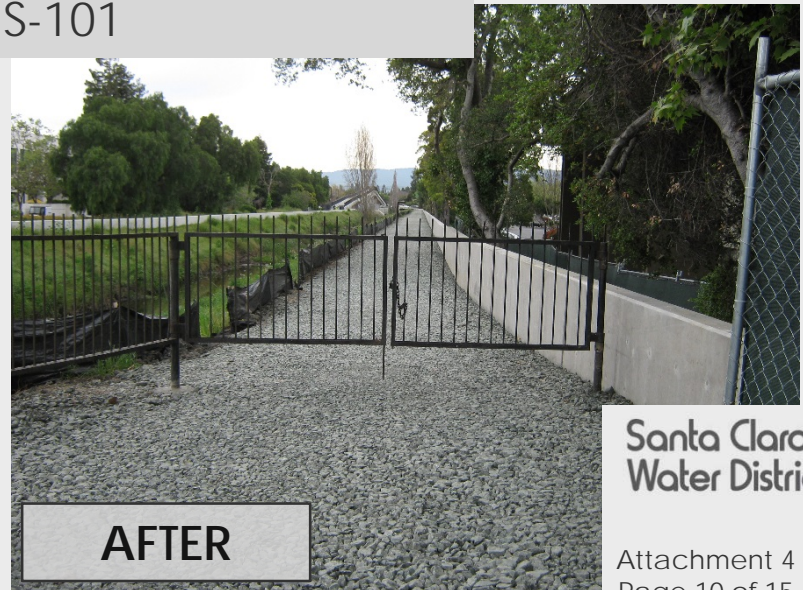
# Construction Photos - Progression



**BEFORE**



Floodwall Between Charleston Road  
and US-101



**AFTER**

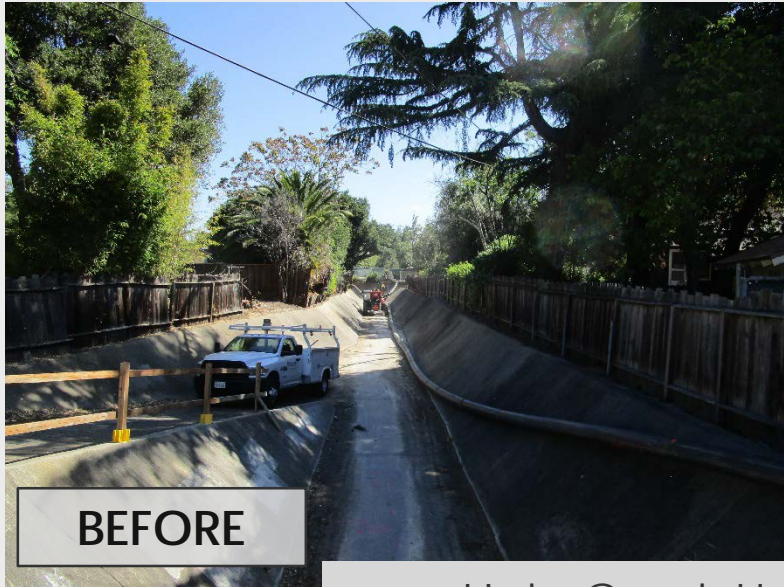
Santa Clara Valley  
Water District

Attachment 4  
Page 10 of 15





# Construction Photos - Progression



Hale Creek U-Frame Channel



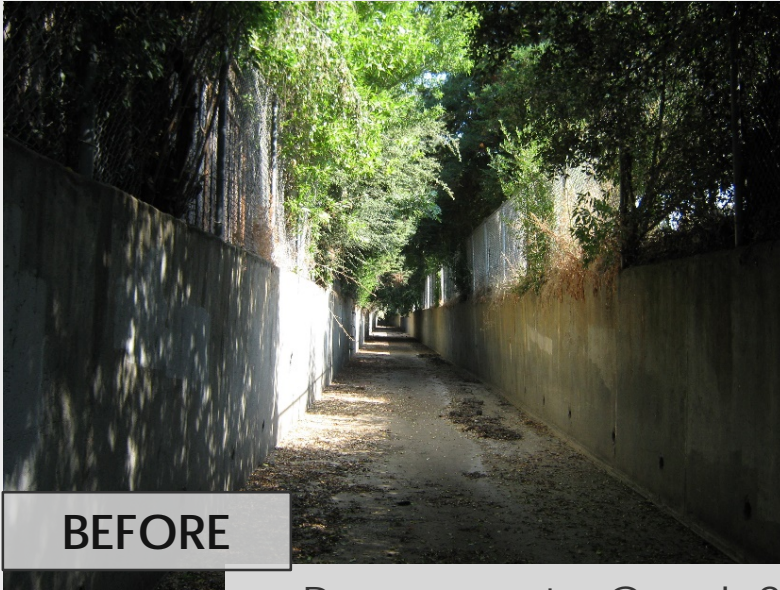
**AFTER**

Santa Clara Valley  
Water District





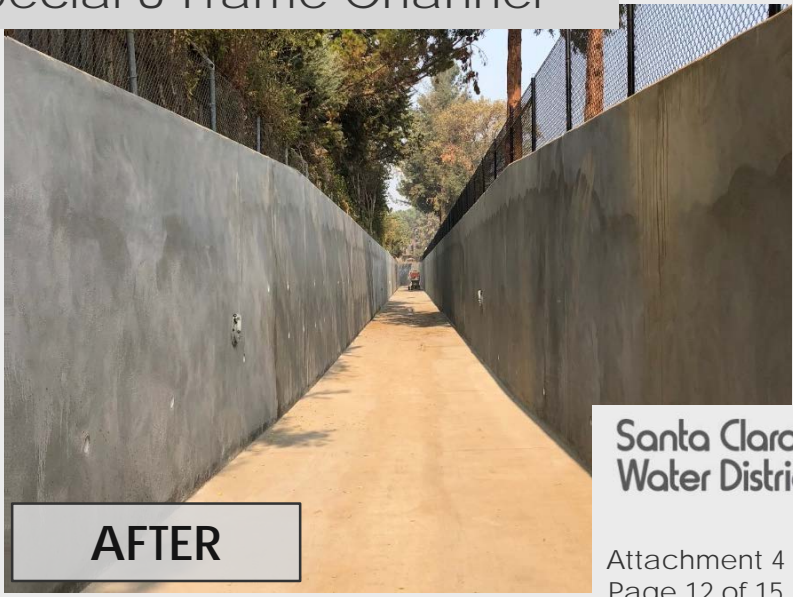
# Construction Photos - Progression



**BEFORE**



Permanente Creek Special U-Frame Channel



**AFTER**

Santa Clara Valley  
Water District



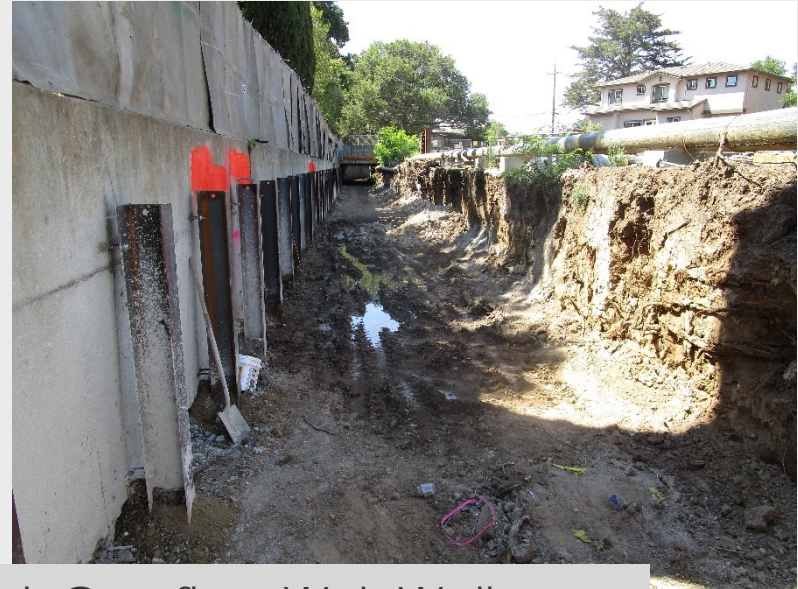
Attachment 4  
Page 12 of 15



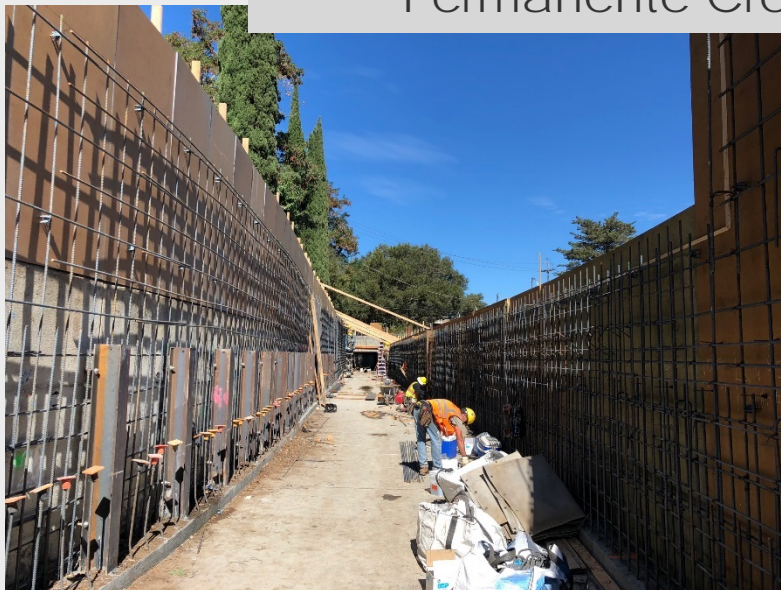
# Construction Photos - Progression



**BEFORE**



Permanente Creek Overflow Weir Wall



**AFTER**

Santa Clara Valley  
Water District



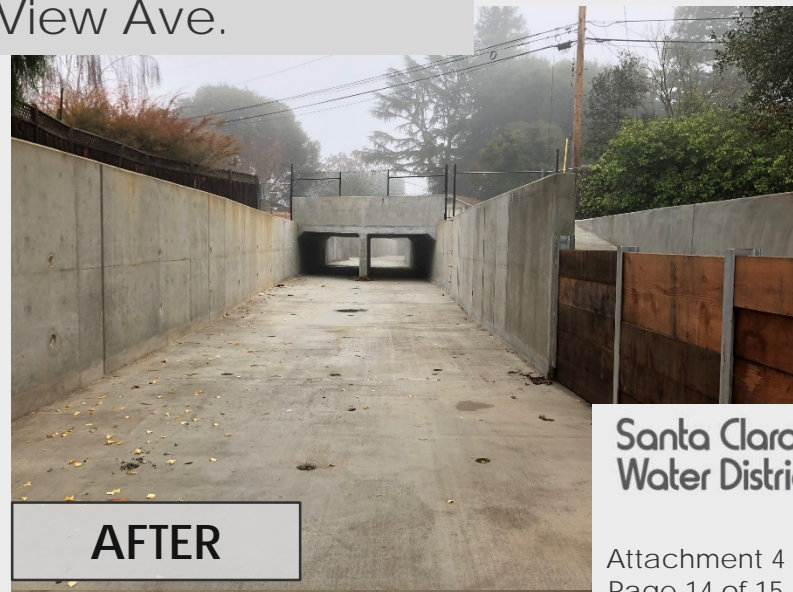
Attachment 4  
Page 13 of 15



# Construction Photos - Progression



Reinforced Double Cell Box Culvert at Mountain View Ave.



Santa Clara Valley  
Water District





# Construction Photos - Progression



Pathway Downstream of Charleston Rd.  
(Adjacent to Googleplex)



Santa Clara Valley  
Water District



THIS PAGE INTENTIONALLY LEFT BLANK