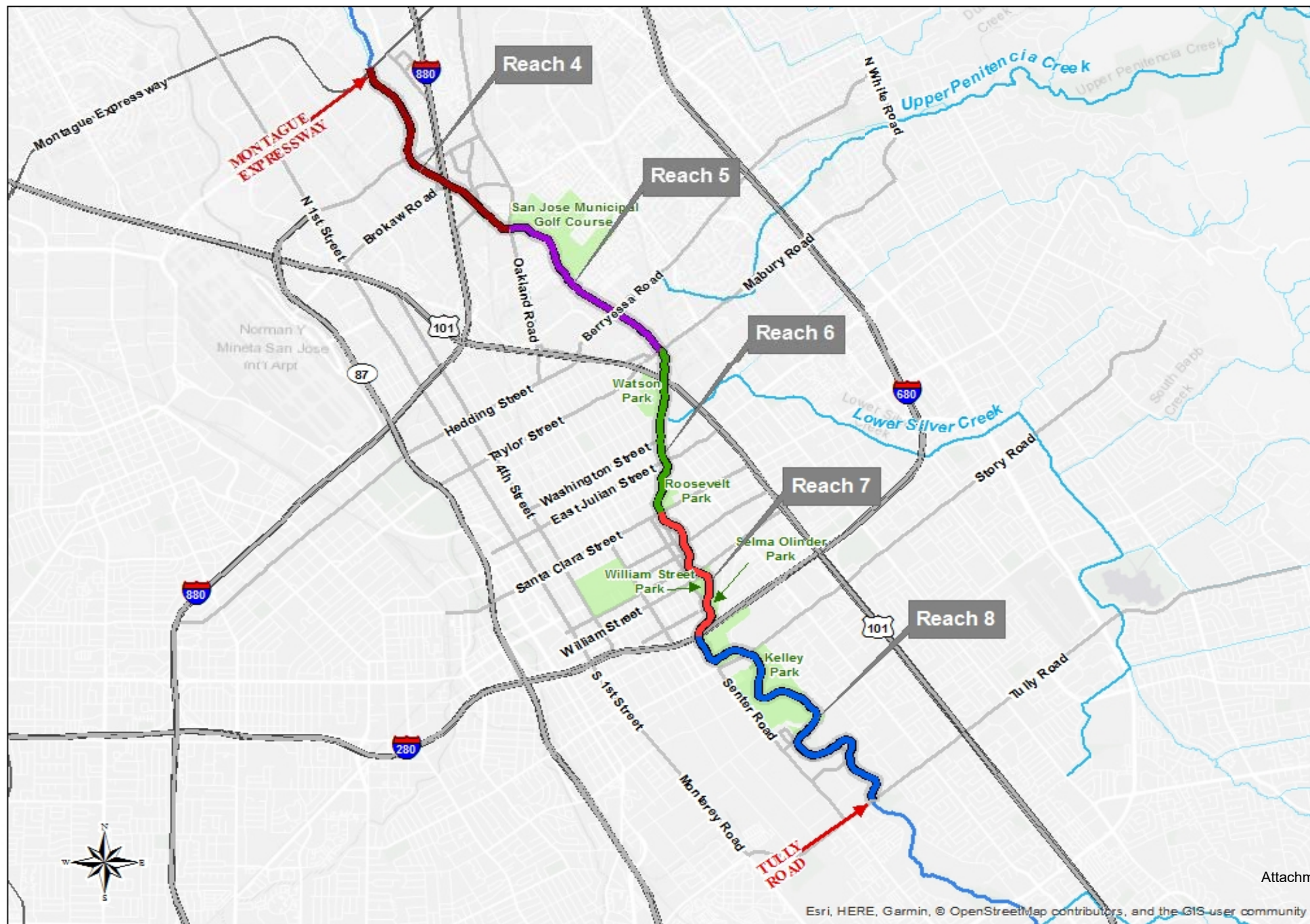




Coyote Creek Flood Protection Project Update

Conceptual/Feasible Project Alternatives



Coyote Creek Montague Expressway to Mabury Road Reaches 4 & 5 February 2017 Breakout Locations

Charcot Avenue Bridge:
Flow at which flooding begins: 7,200 cfs
Observed 2017 Flow: 7,400 cfs
2017 if flows contained: 7,600 cfs

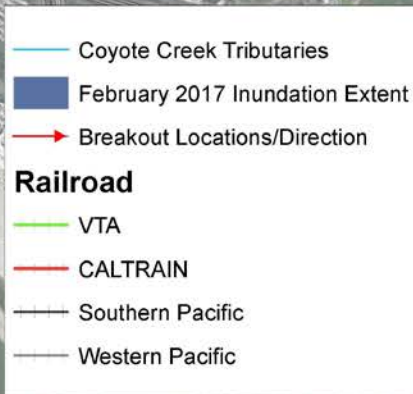
Reach 4

Reach 5

South Bay Mobile Home Park:
Flow at which flooding begins: 7,000 cfs
Observed 2017 Flow: 7,550 cfs
2017 if flows contained: 7,600 cfs

Upstream of Berryessa Road:
Flow at which flooding begins: 4,100 cfs
Observed 2017 Flow: 7,250 cfs
2017 if flows contained: 7,300 cfs

Downstream of Berryessa Road:
Flow at which flooding begins: 1,300 cfs
Observed 2017 Flow: 7,550 cfs
2017 if flows contained: 7,600 cfs

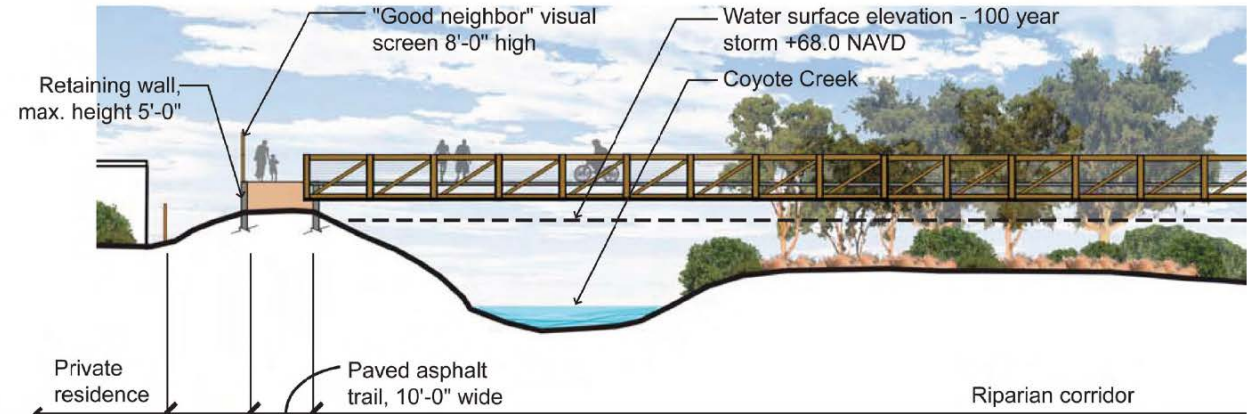


Reach 4 - Charcot Avenue Bridge

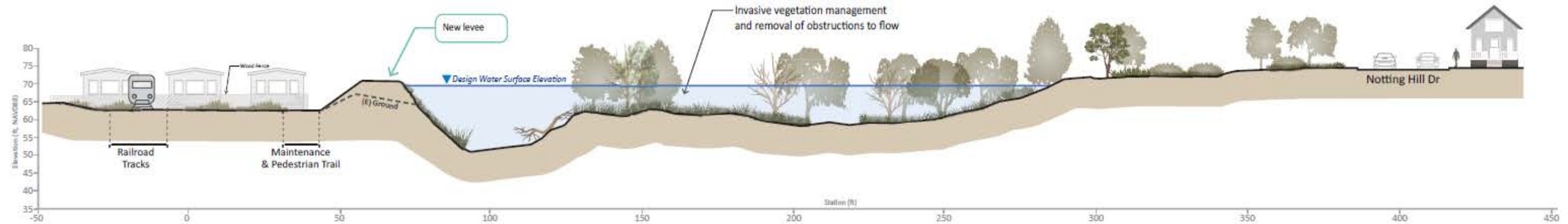


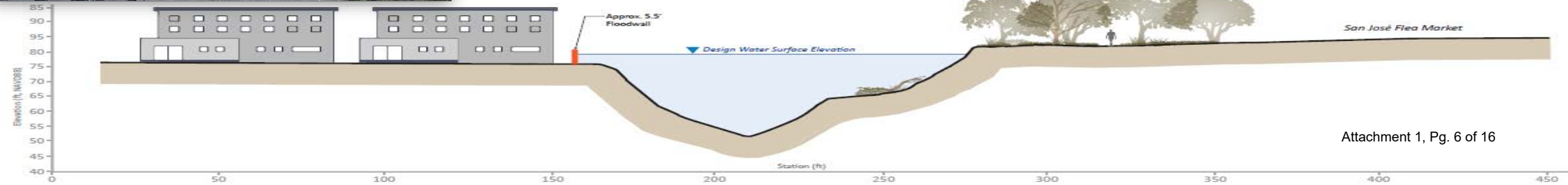
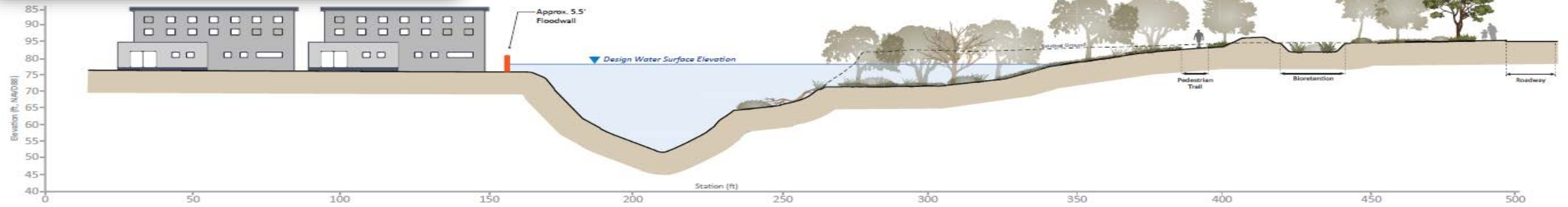
CONCEPTUAL

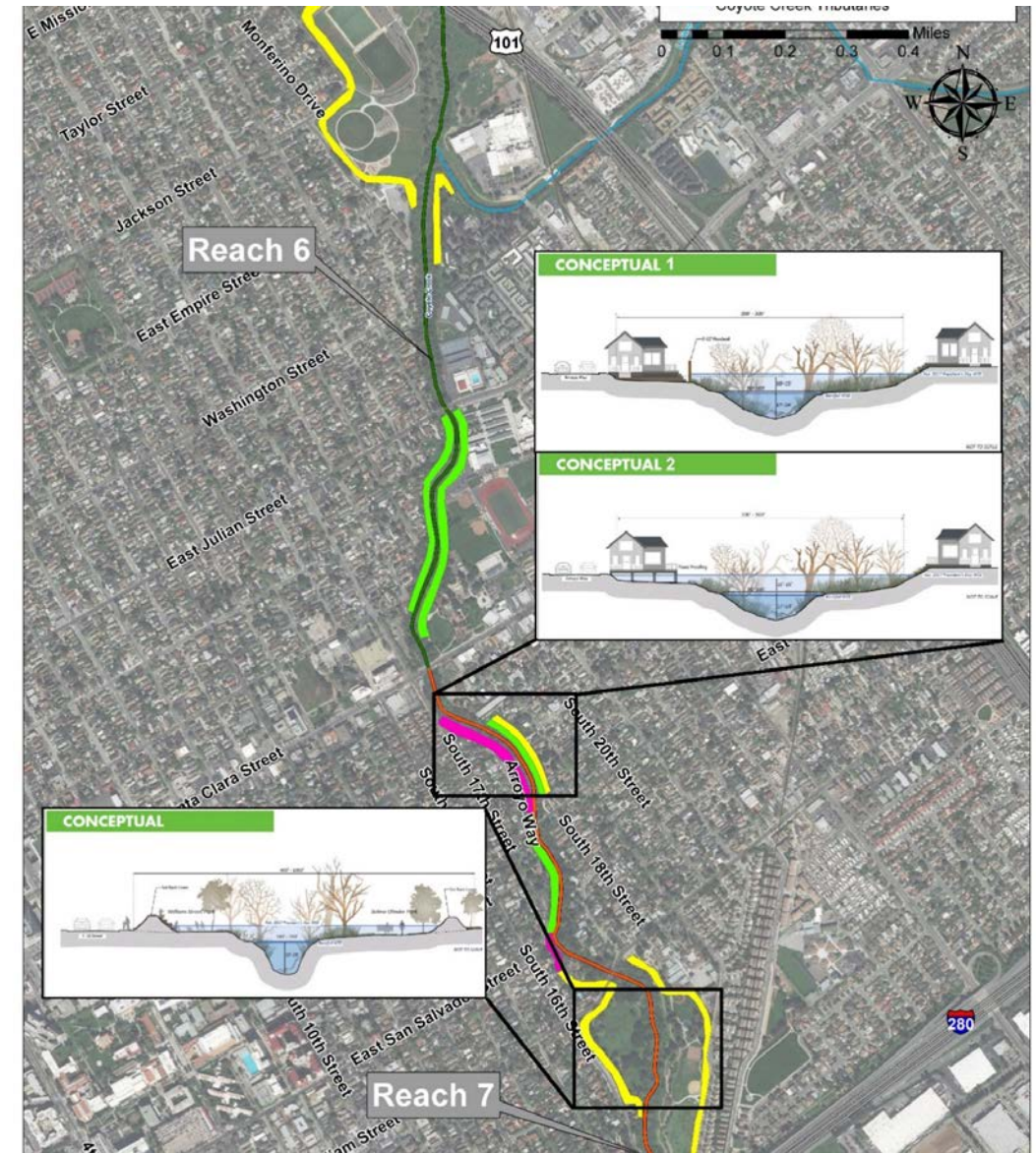
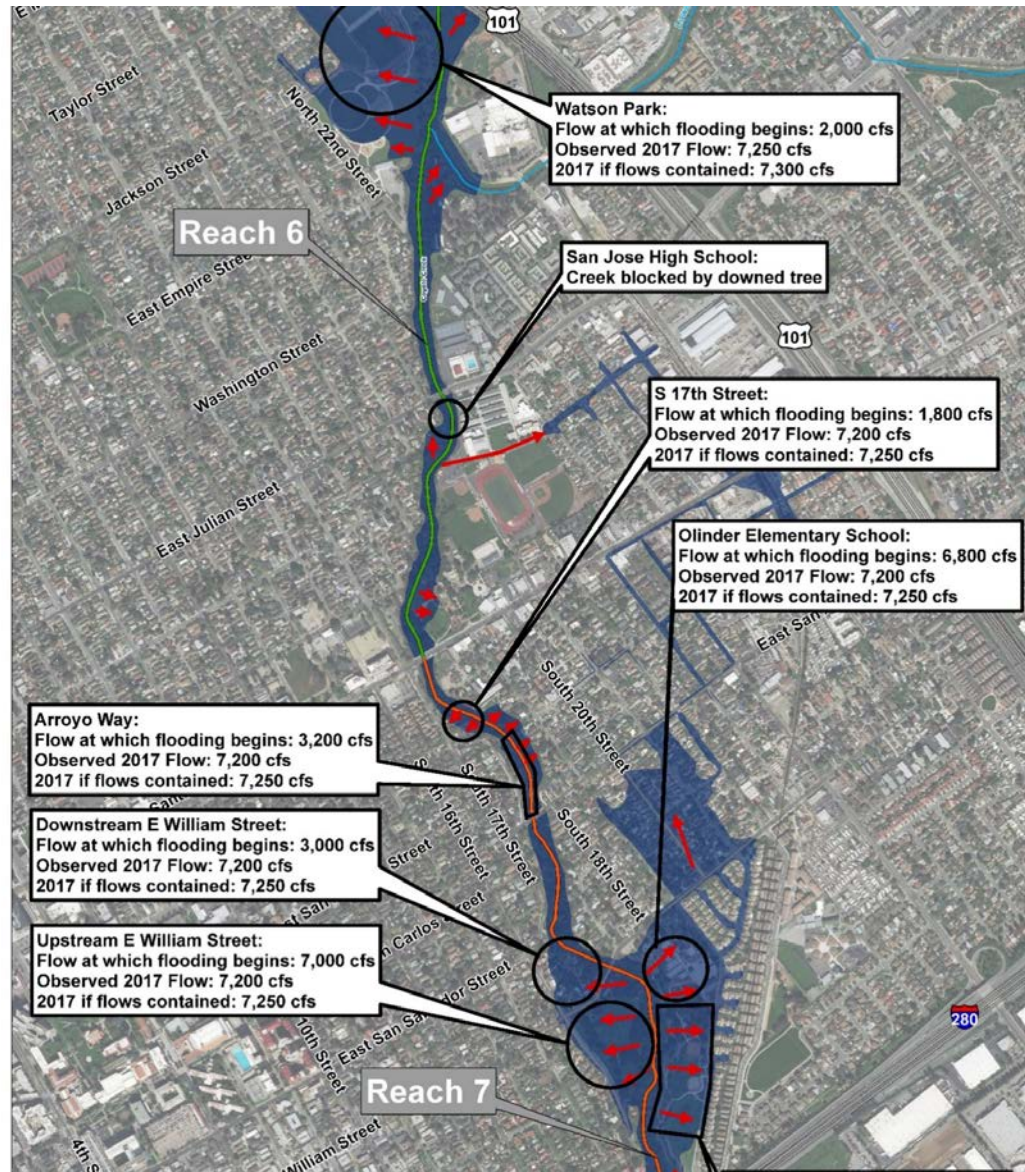


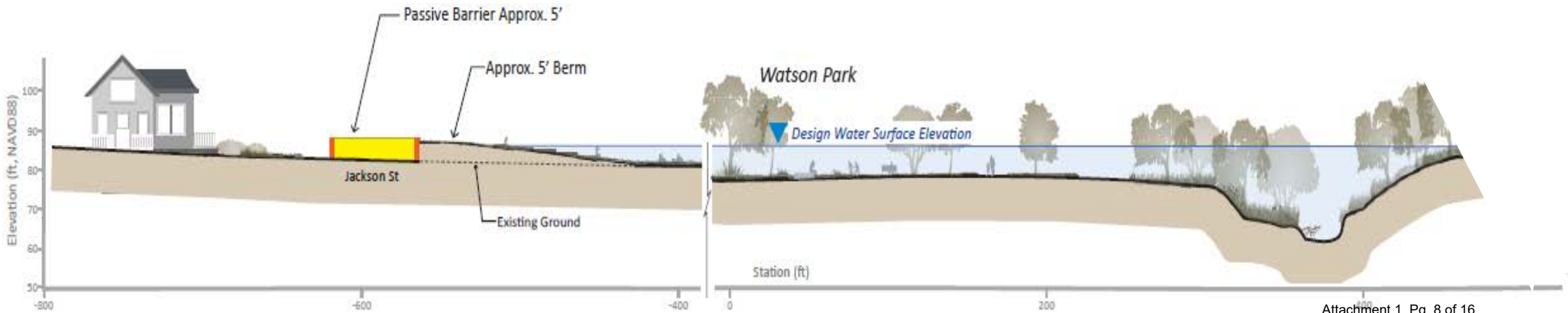
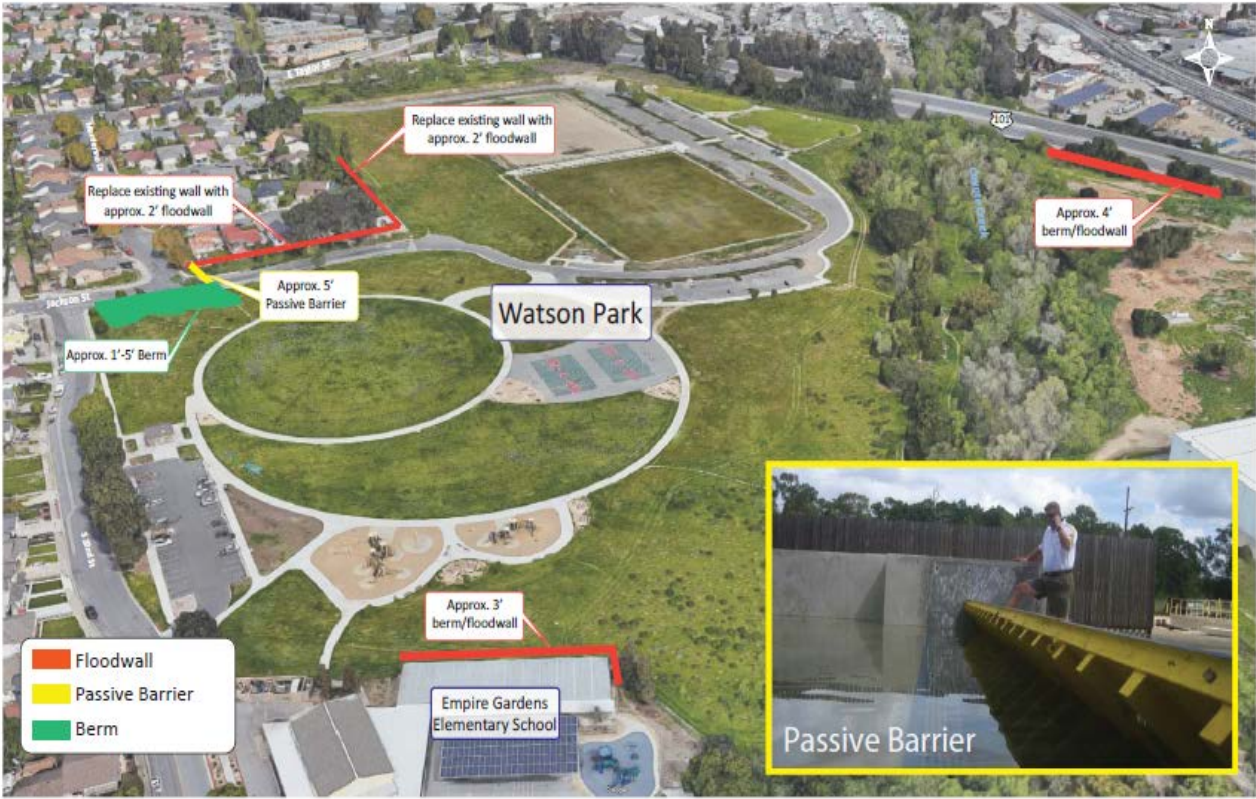


Cross-section obtained with permission of City of San José. Obtained from Coyote Creek Trail Master Plan, Montague to Watson Park, September 2011

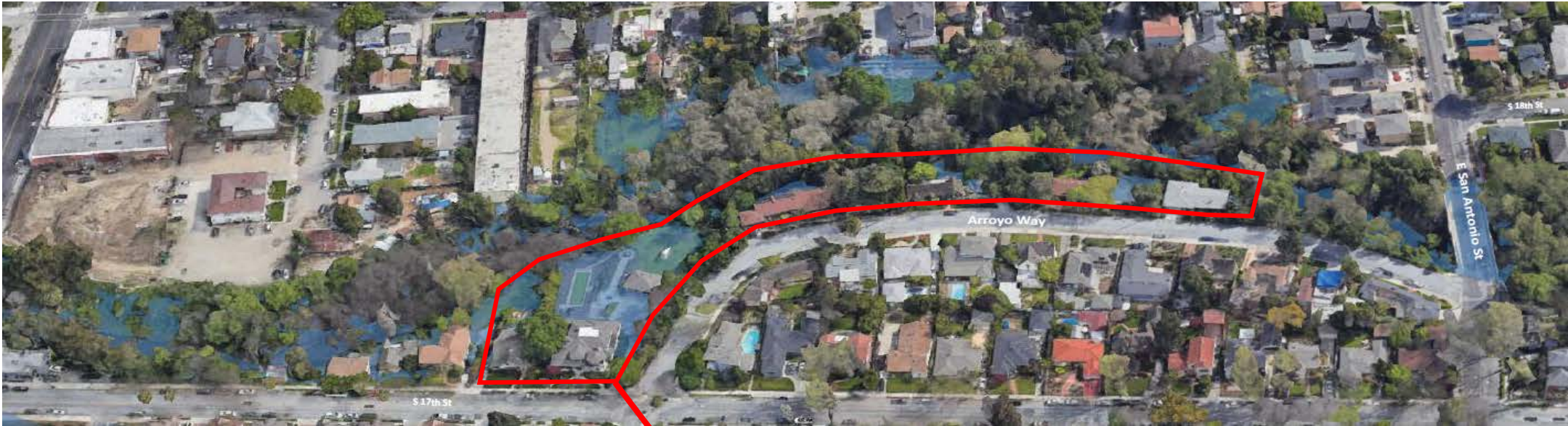






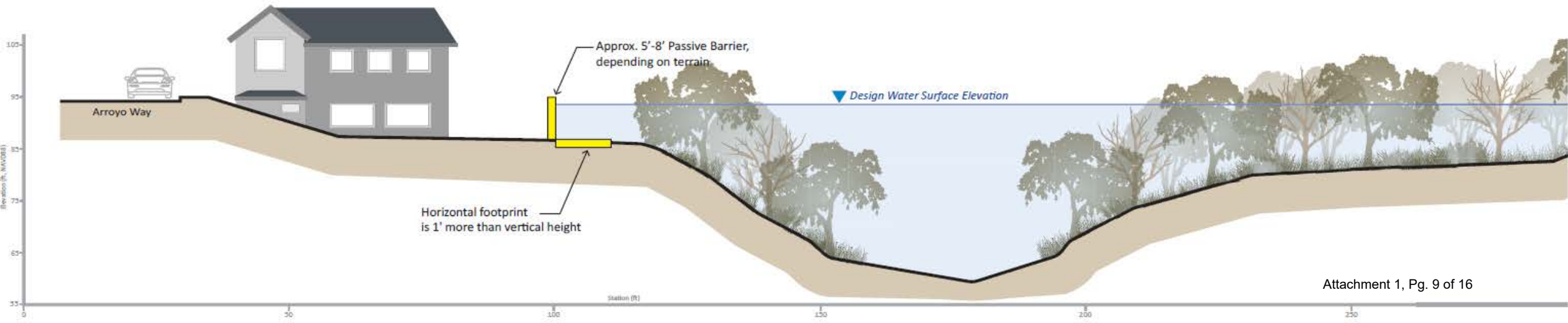


Reach 7 - E. Santa Clara St. to E. San Antonio St.



OPTION A – INSTALL PASSIVE BARRIER

82 S. 17th Street
96 S. 17th Street
All homes on east side of Arroyo Way



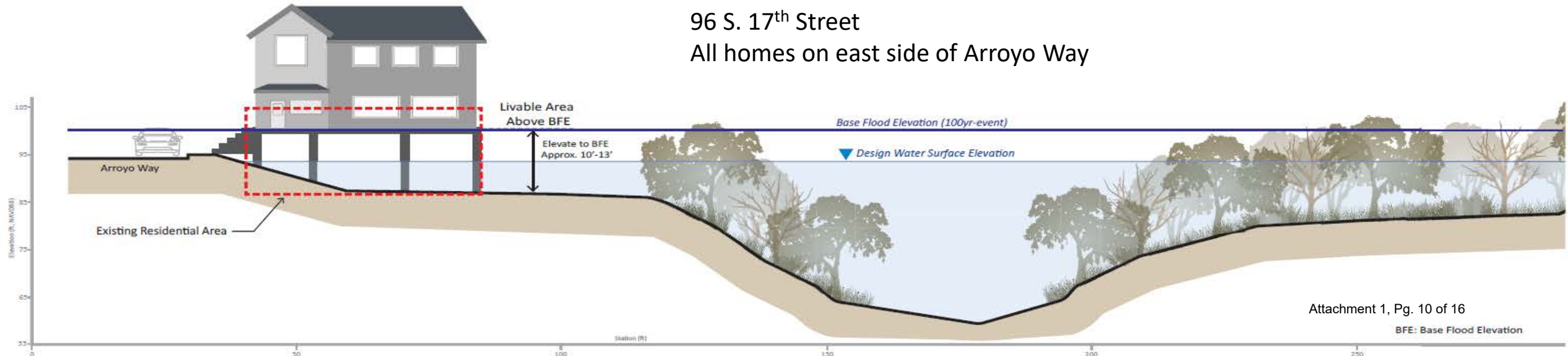
Reach 7 - E. Santa Clara St. to E. San Antonio St.



OPTION B – ELEVATE TO BASE FLOOD ELEVATION (BFE)

OPTION C – VOLUNTARY ACQUISITION

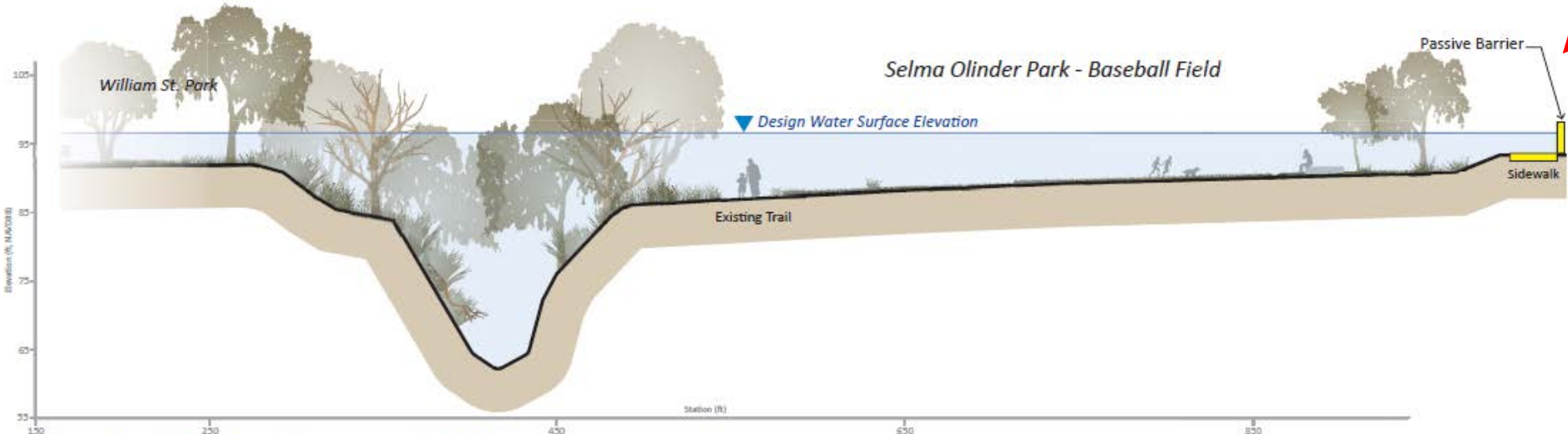
82 S. 17th Street
96 S. 17th Street
All homes on east side of Arroyo Way



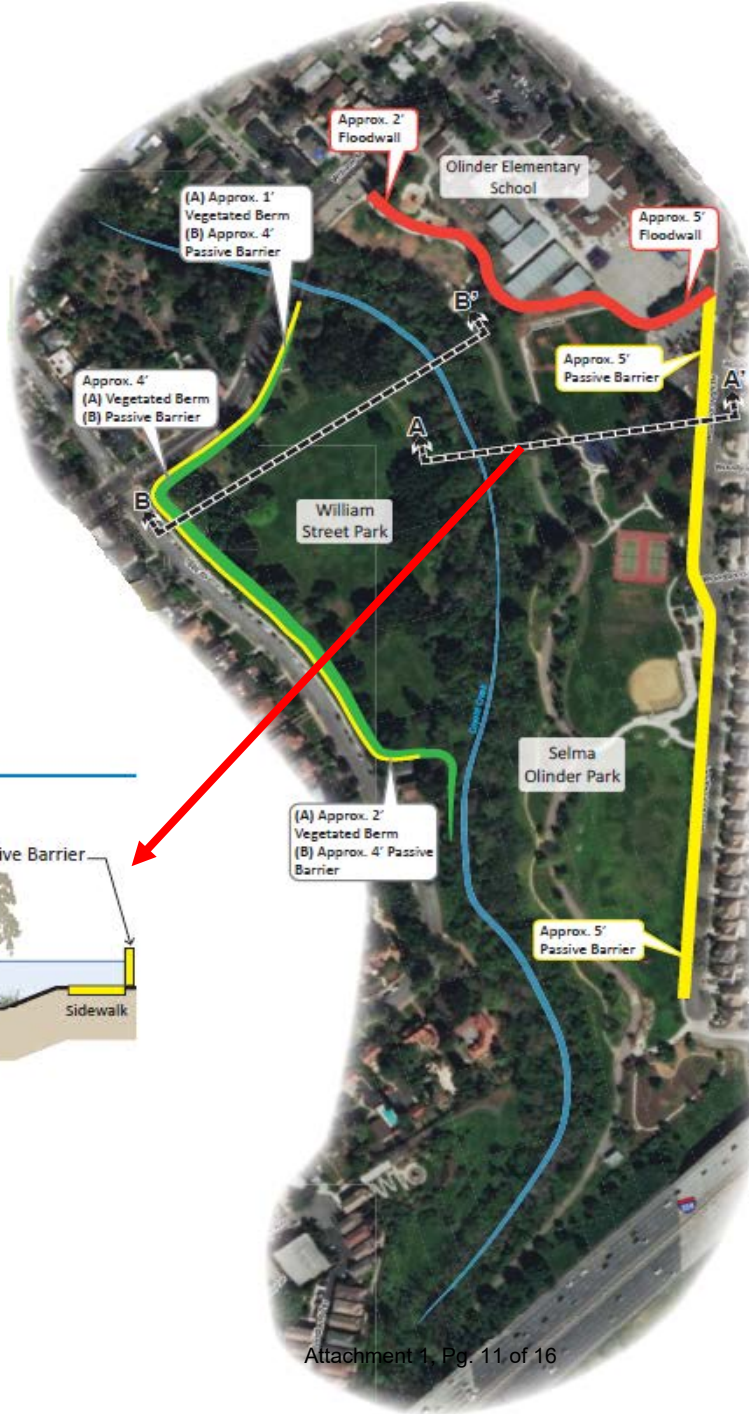
Reach 7 - William Street Park & Selma Olinder Park



Cross Section A - A'



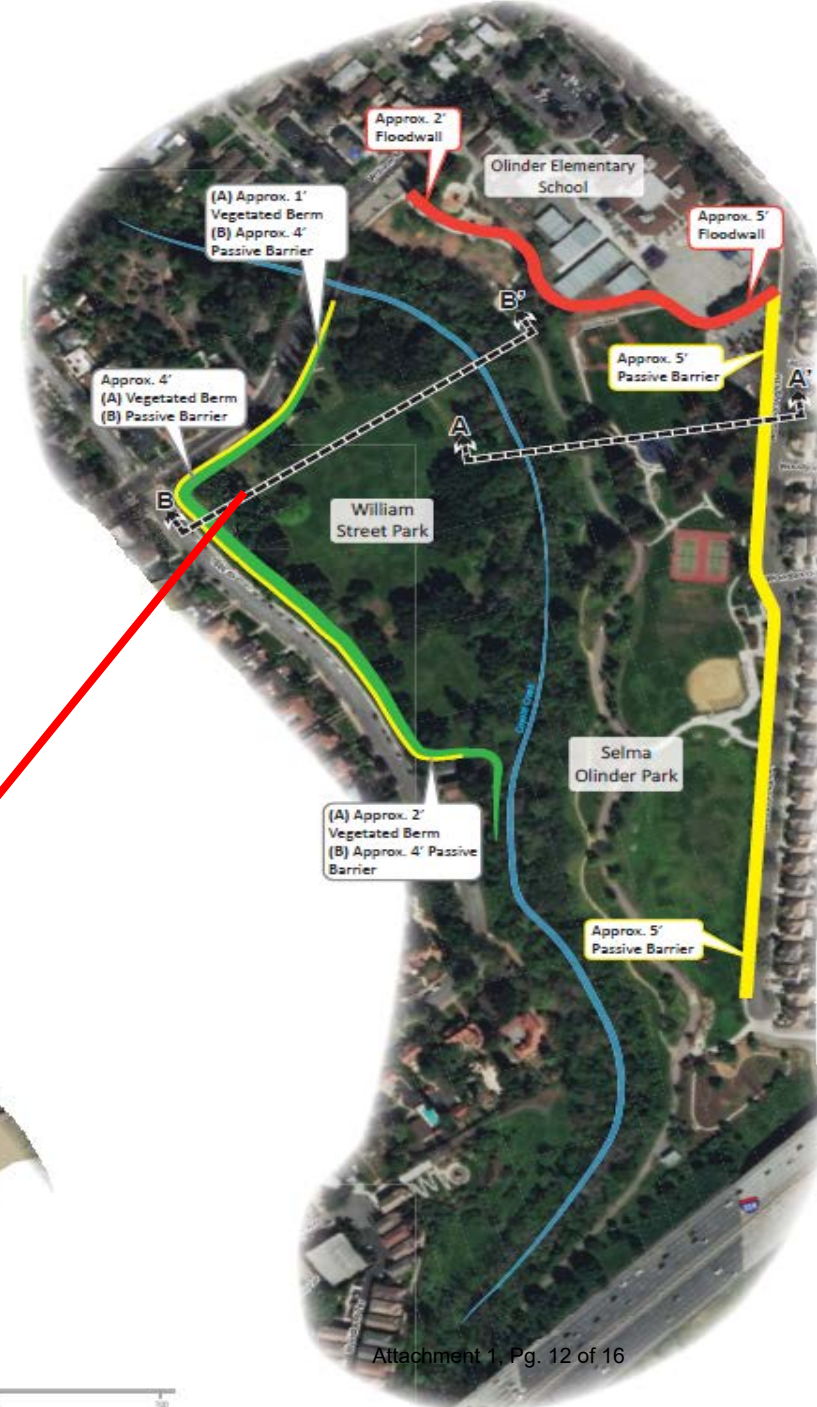
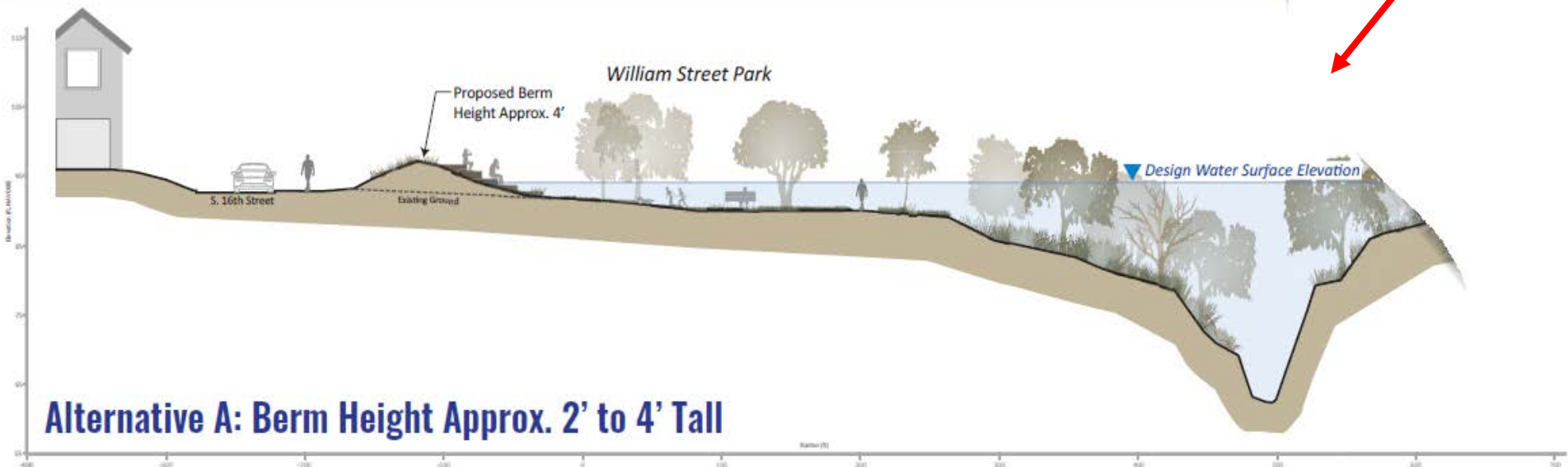
Passive Barrier Approx. 5' Tall



Reach 7 - William Street Park & Selma Olinder Park



Cross Section B - B'



Coyote Creek I-280 to Tully Road Reach 8 February 2017 Breakout Locations

San Jose Water Company,
12th St. Station:
Observed 2017 Flow: 7,300 cfs
2017 if flows contained: 7,300 cfs

Story Road Landfill Site:
Observed 2017 Flow: 7,300 cfs
2017 if flows contained: 7,300 cfs

Creskide Garden Apartments:
Flow at which flooding begins: 7,000 cfs
Observed 2017 Flow: 7,300 cfs
2017 if flows contained: 7,300 cfs

Japanese Friendship Garden:
Flow at which flooding begins: 4,000 cfs
Observed 2017 Flow: 7,300 cfs
2017 if flows contained: 7,300 cfs

Happy Hollow Park & Zoo:
Flow at which flooding begins: 3,500 cfs
Observed 2017 Flow: 7,300 cfs
2017 if flows contained: 7,300 cfs

Kelley Park:
Flow at which flooding begins: 4,000 cfs
Observed 2017 Flow: 7,300 cfs
2017 if flows contained: 7,300 cfs

Cooksy Family Stables:
Flow at which flooding begins: 2,500 cfs
Observed 2017 Flow: 7,300 cfs
2017 if flows contained: 7,300 cfs

San Jose Water Company Tully Road Station:
Observed 2017 Flow: 7,300 cfs
2017 if flows contained: 7,300 cfs

Rocksprings Neighborhood:
Flow at which flooding begins: 5,000 cfs
Observed 2017 Flow: 7,300 cfs
2017 if flows contained: 7,300 cfs

February 2017 Inundation Extent

Breakout Location/Direction

Railroad

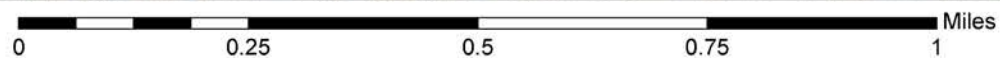
VTA

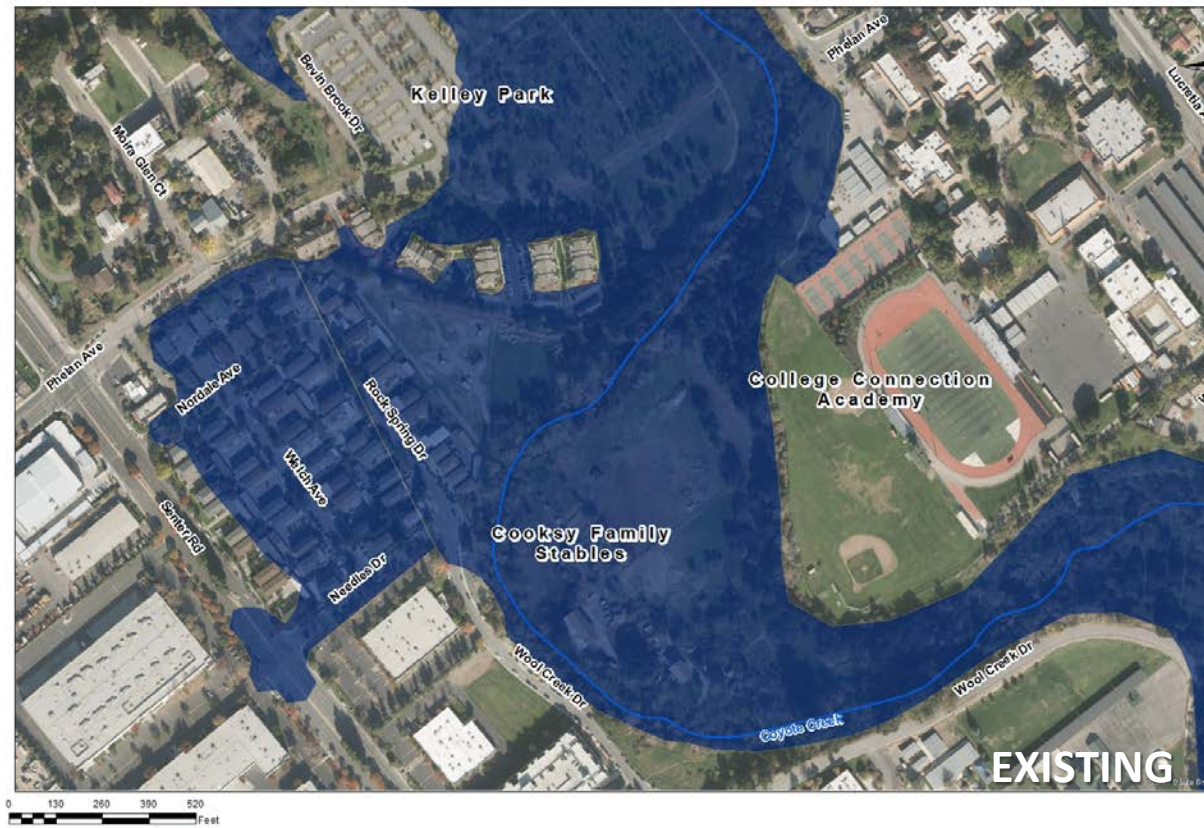
CALTRAIN

Southern Pacific

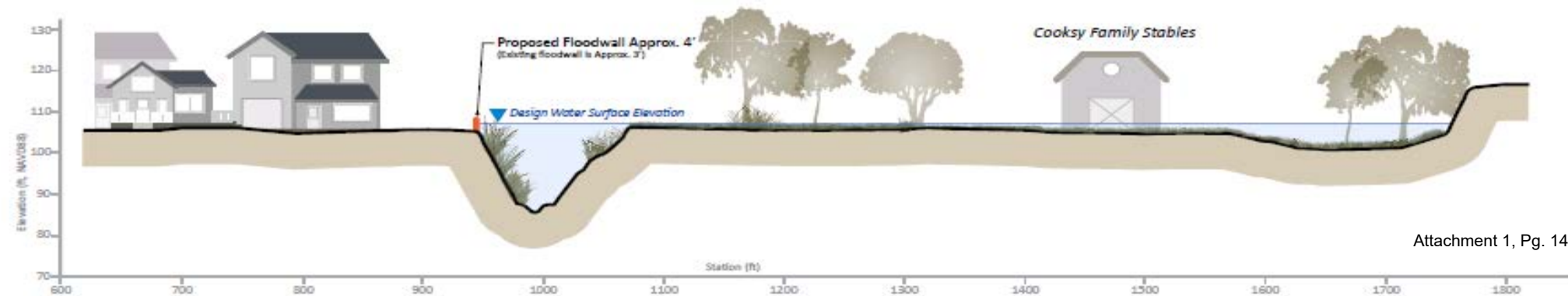
Western Pacific

Reach 8





Rock Springs Community/Bevin Brook Dr



Feasible Rough Order of Magnitude Cost Estimate for entire Project



- Reach 4: 4 M
 - Reach 5: 7 M
 - Reach 6: 8 M
 - Reach 7: 15 M
 - Reach 8: 4 M
- Reach 4: 16 M
 - Reach 5: 22 M
 - Reach 6: 15 M
 - Reach 7: 22 M
 - Reach 8: 10 M

Project Components, Status and Timeline

Expedited Project Timeline: Assumes project alternative selected for implementation does not require extensive permitting

Components	2017	2018	2019	2020	2021	2022	2023	2024
Problem Definition								
Conceptual Alternatives								
Feasible Alternatives								
Planning Study Report								
Design and Permitting								
Construction								