

Upper Guadalupe River – Reach 7-12

Caltrain Bridges to Blossom Hill Road

Upper Guadalupe River Project (UGRP) Update

2

1. Overview

This is a federally authorized project in partnership with the US Army Corps of Engineers to design and construct improvements along 5.5 miles of channel from Interstate 280 to Blossom Hill Road, also referred to as the Locally Preferred Project.

2. What has been completed?

- Reach 6 channel work construction - December 2012
- Reach 10B channel work construction - December 2013
- Reach 12 channel work construction - December 2015

Upper Guadalupe River Project (UGRP) Update

3

3. Current Status

- 65% Design for Reaches 7 and 8 channel work (USACE)
- 65% Design for vehicular bridges at Alma Ave/Willow Street (USACE)
- The USACE hasn't received funding for this project since 2014
- Staff working with USACE for a path forward to make project more competitive for federal funding

4. Next Steps for Valley Water

- Safe, Clean Water Program
 - Key performance indicator to use local funding for Reach 7 construction
- Staff evaluated options and costs for Reaches 7 and 8 (see table)
- Remaining project budget approx \$55.6 M

UGRP Reaches 7 & 8 Costs

Reach	50-year	100-year	50-Year Channel with 100-year Bridges
7	\$39 M	\$52.5 M	\$41.7 M
8	\$10.4 M	\$14.7 M	\$10.4 M
Total	\$49.4 M	\$67.2 M	\$52.1 M

All costs are in 2019 dollars

Notes:

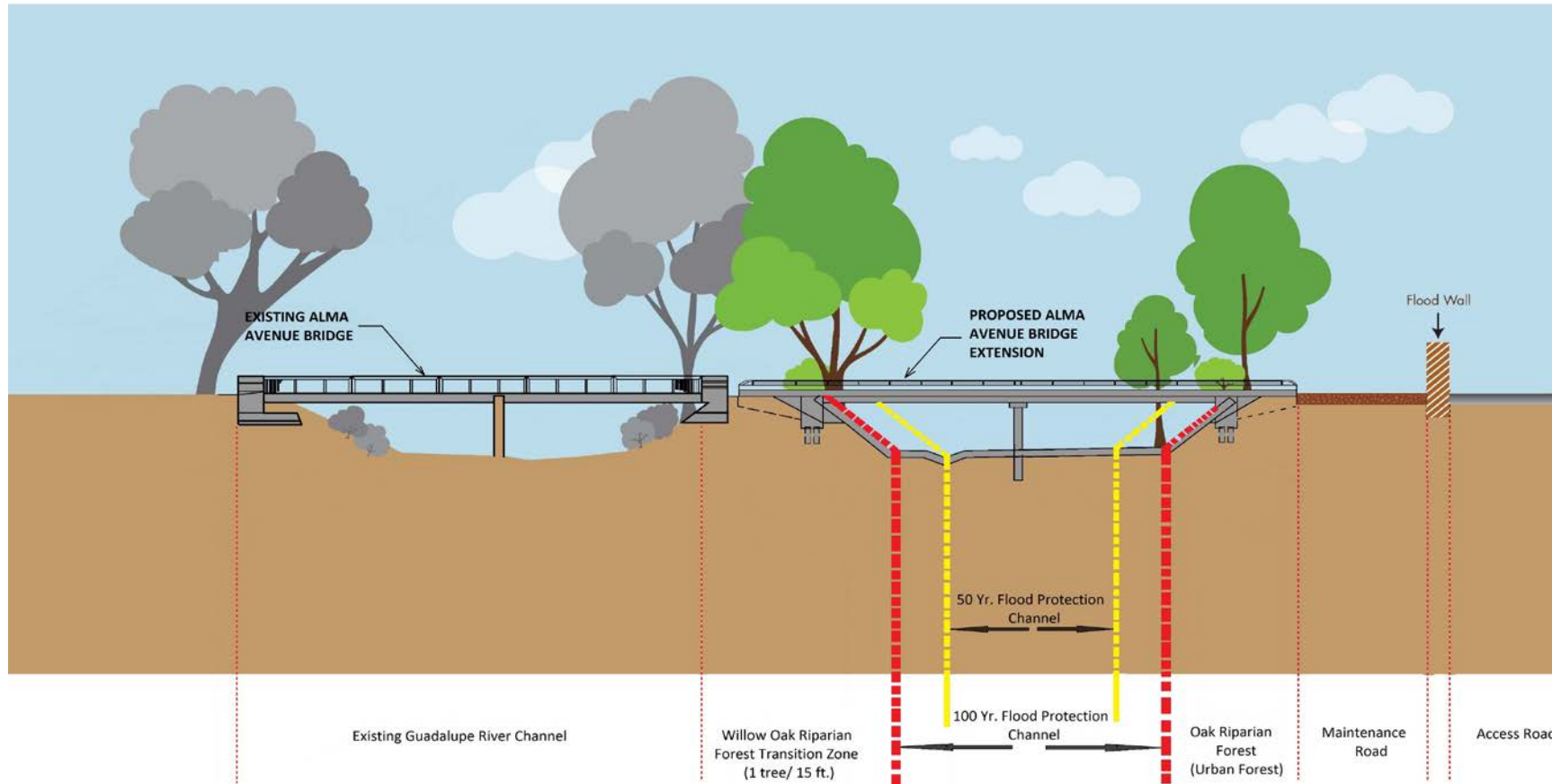
- Bypass channel at 100-year is wider than 50-year by 60 feet
- Two bridges at 100-year are longer by 60 feet

New Bypass Channel and Vegetation Planting Area

Upper Guadalupe River Flood Protection Project

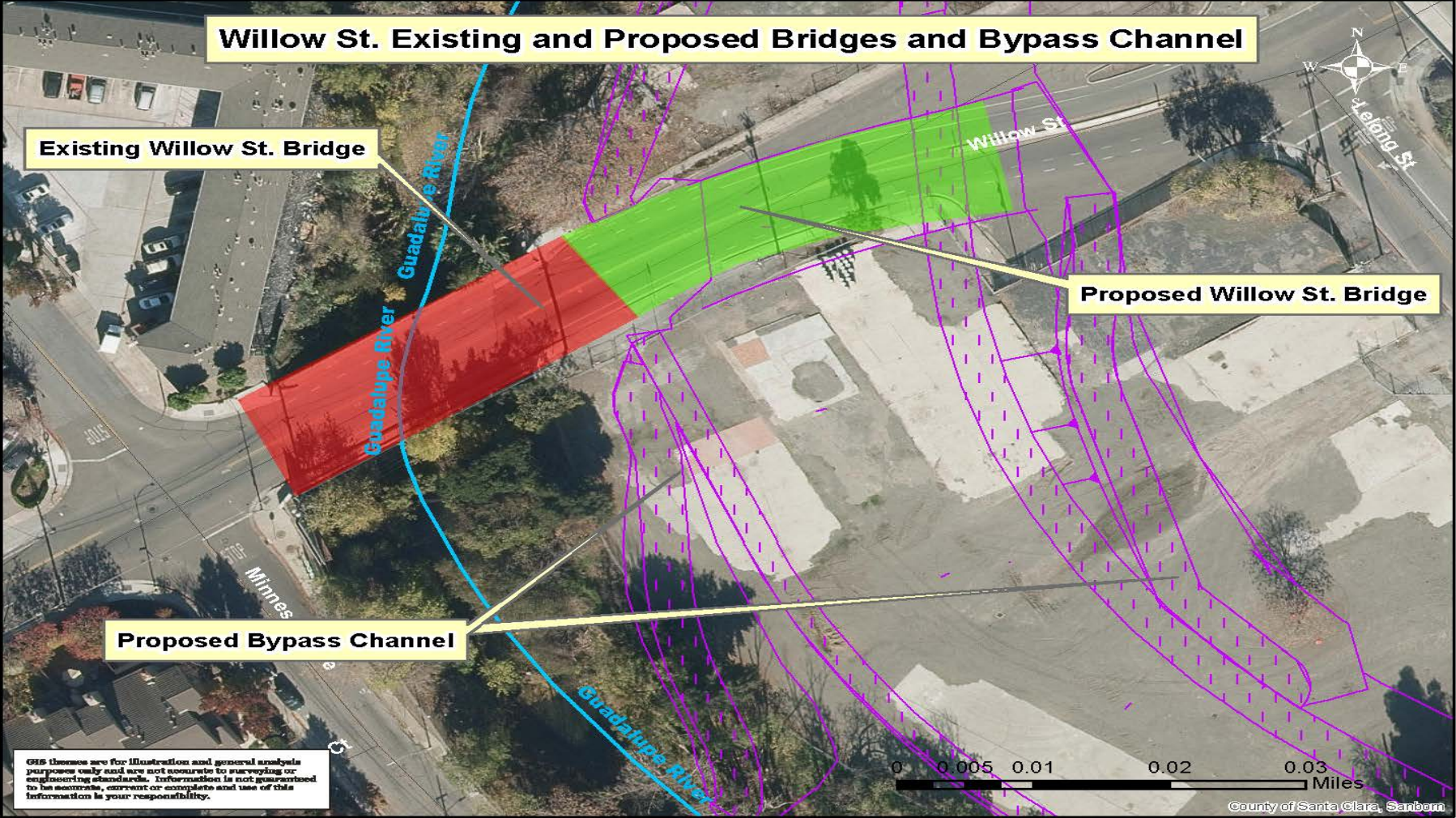
New Bypass Channel and Vegetation Planting Area at Alma Avenue Bridge

CROSS SECTIONAL VIEW



Willow Street Bridge

Upper Guadalupe River Flood Protection Project



Alma Avenue Bridge

Upper Guadalupe River Flood Protection Project

7

