



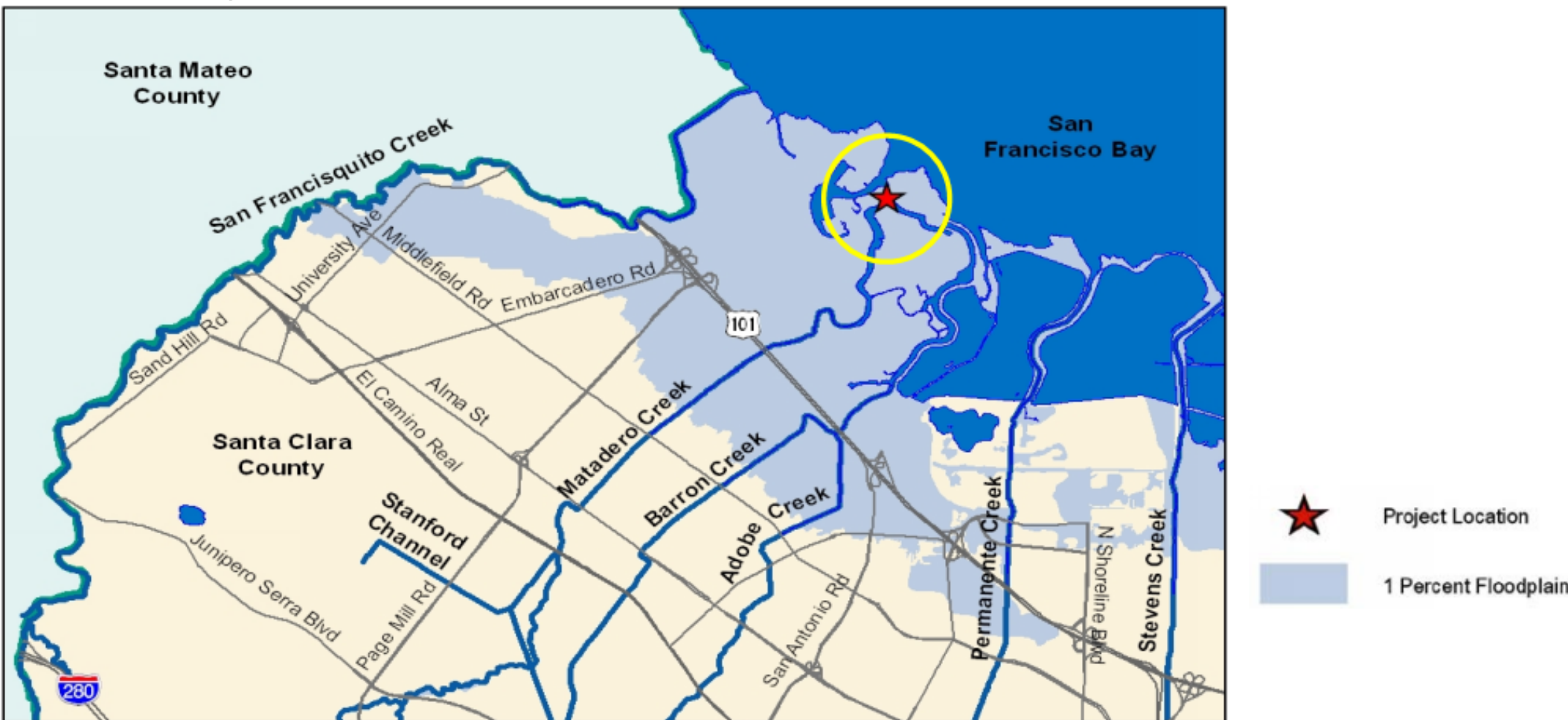
Palo Alto Flood Basin Tide Gate Structure Improvements

Presented by: **Roger Narsim**, P.E., P.L.S., Assoc. DBIA, Capital Engineering Manager



Project Location (District 7)

2





EXISTING TIDE
GATE STRUCTURE

Background

- Tide gates constructed in 1957 by Santa Clara County Flood Control & Water Conservation District, Santa Clara County, and the City of Palo Alto
- Palo Alto Flood Basin (PAFB) controls starting water elevations for Adobe, Barron, and Matadero creeks
- Historically the City of Palo Alto owned gates in the basin before the current structure was built



Stakeholders (1 of 2)

5

- San Francisquito Creek Joint Powers Authority (SFCJPA)
- City of Palo Alto (City of PA)
- City of Mountain View (City of MW)
- U.S. Army Corps of Engineers (USACE)
- U.S. Fish and Wildlife Service (USFWS)
- National Marine Fisheries Service (NMFS/NOAA)

Stakeholders (2 of 2)

6

- California Department of Fish and Wildlife (CDFW)
- San Francisco Bay Regional Water Quality Control Board
- Santa Clara County Vector Control District (SCCVCD)
- San Francisco Bay Trail (Bay Trail)
- California State Coastal Conservancy (SCC)
- San Francisco Bay Conservation and Development Commission (BCDC)

Tide Gate Structure Condition

7



Timeline: Previous Studies & Repairs 8

- PAFB Tide Gate Structure leaking reported (2011)
- PAFB Tide Gate Structure Monitoring (Dec. 2011)
- PAFB Tide Gate Structure Emergency Repairs (2012)
 - Post-emergency repair report to USACE (Oct. 2012)
 - New Capital Project initiated in 2012 to replace structure within 5 years
- PAFB Tide Gate Structure Inspection Report (April 2014)
- Problem Definition/Refined Objectives Report (June 2016)
- PAFB Tide Gate Structure Maintenance Repairs, Incomplete (Oct. 2017)
- Structural Assessment – replace within 2 years (Oct. 2017)
- Project transferred to Design and Construction Unit 5, #336 (Jan. 2018) for developing a structure replacement

Timeline: Work-to-date (1 of 2)

9

- Geotechnical investigation & report (2018-2019)
- Bathymetric survey (2018-2019)
- Project coordination w/ City of Palo Alto regarding electrical controls (June 2019)
- Hydraulic analysis of gate design (July 2019)
- Sea Level Rise (SLR) optimization, target 2 feet (July 2019)

Timeline: Work-to-date (2 of 2)

10

- Project coordination/collaboration with stakeholders (2018-2019)
- Preliminary Design Criteria (January 2019)
- Emergency Action Plan for Valley Water and City of Palo Alto (June 2019)
- Problem Definition/Refined Objectives Report (January 2020)
- Draft Planning Study Report (January 2020)

Preliminary Design Criteria

11

- Provide 100-year flood risk reduction for Matadero Creek, Adobe Creek, and Barron Creek.
- Increased capacity for future Sea Level Rise (SLR) (*Top of structure will be 4 feet above the existing levee, consistent with City of Mountain View Shoreline Levee Project at Coast Casey*)
- Located along future Shoreline Levee Project alignment
- Meet current seismic design standards
- Increase the safety and efficiency for future Operations & Maintenance
- Increase hydraulic efficiency with 8 side-hinged gates vs 15 top-hinge gates

Side gate versus Top gate efficiency 13

Video to be played during meeting.

Project Schedule

- Draft Problem Definition Report & Planning Study Report: January 2020
- Planning Phase Completion: May 2020
- 30% Design: Sept. 2019 – April 2020
- 60% Design: May 2020 – Oct. 2020
- 90% Design: Oct. 2020 – Dec. 2020
- 100% Design: Dec. 2020 – Feb. 2021
- Environmental (CEQA/Permitting): Jan. 2019 – April 2021
- Advertise/Award Contract: April 2021 – August 2021
- Construction Schedule (Alt-C): Sept. 2021 – Jan. 2025

Public Outreach

- Project website (January 2020)
- Planning & preliminary design – public meeting (March 2020)
- CEQA – MND, public notification & circulation (May 2020)
- Pre-construction public meeting (August 2021)

QUESTIONS



THIS PAGE INTENTIONALLY LEFT BLANK