



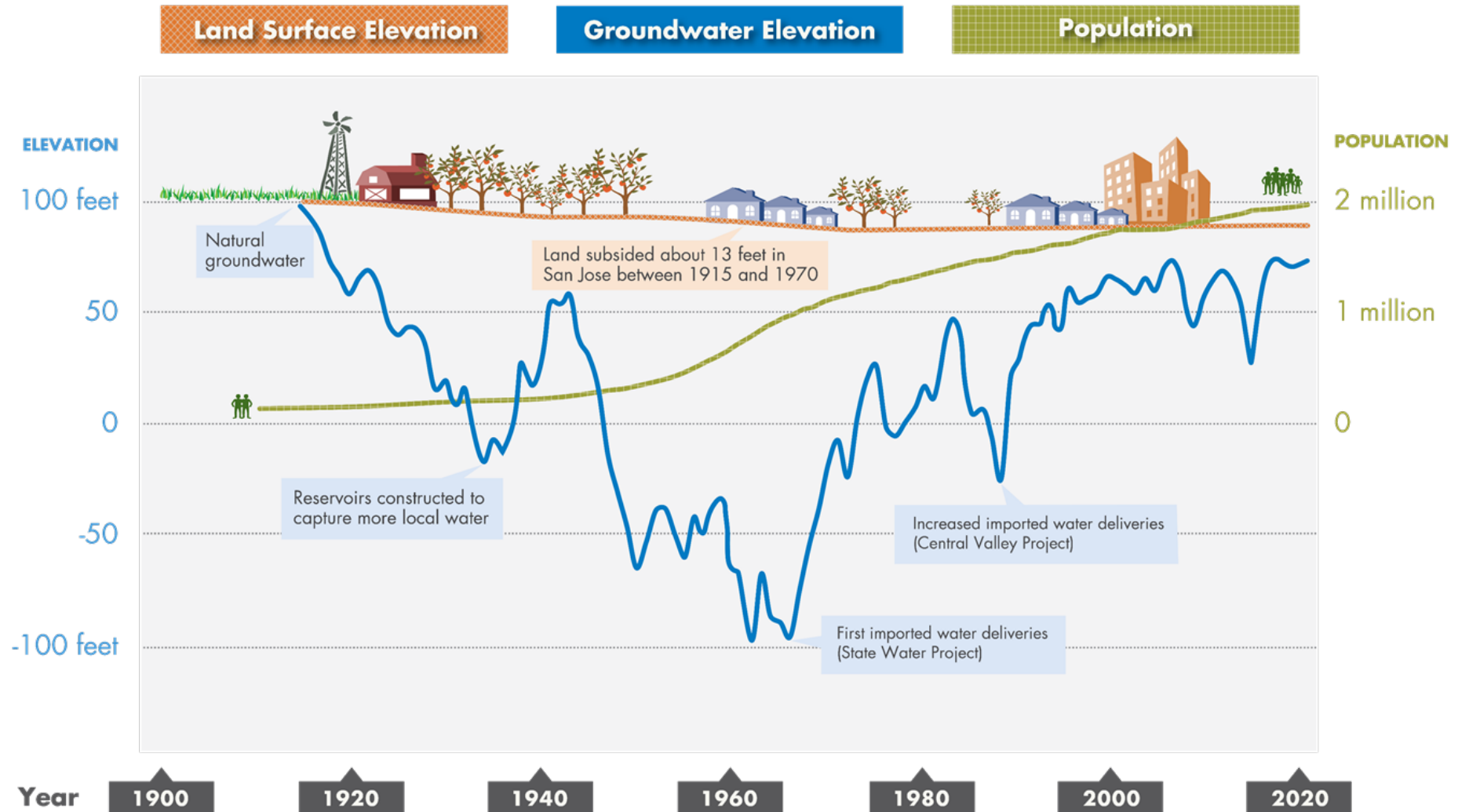
# Water Supply Master Plan 2040 Monitoring and Assessment Program Annual Report and Water Demands Update

Presented by: Samantha Greene, Ph.D., Water Supply Planning and Conservation Unit

# Investing in Water Supply Reliability

## SANTA CLARA COUNTY GROUNDWATER AT-A-GLANCE

*a graphic representation not intended as a technical exhibit*



## Water Use Reductions



# Water Supply “Ensure Sustainability” Strategy

4



## Secure

- Capital Improvement Program Projects
- Delta Conveyance Project

## Expand

- Water Conservation
- Stormwater Capture
- Potable Reuse

## Optimize

- Pacheco Reservoir Expansion
- Transfer-Bethany Pipeline
- South County Recharge

# Water Supply Planning

## 1. ASSESS NEEDS & GOALS



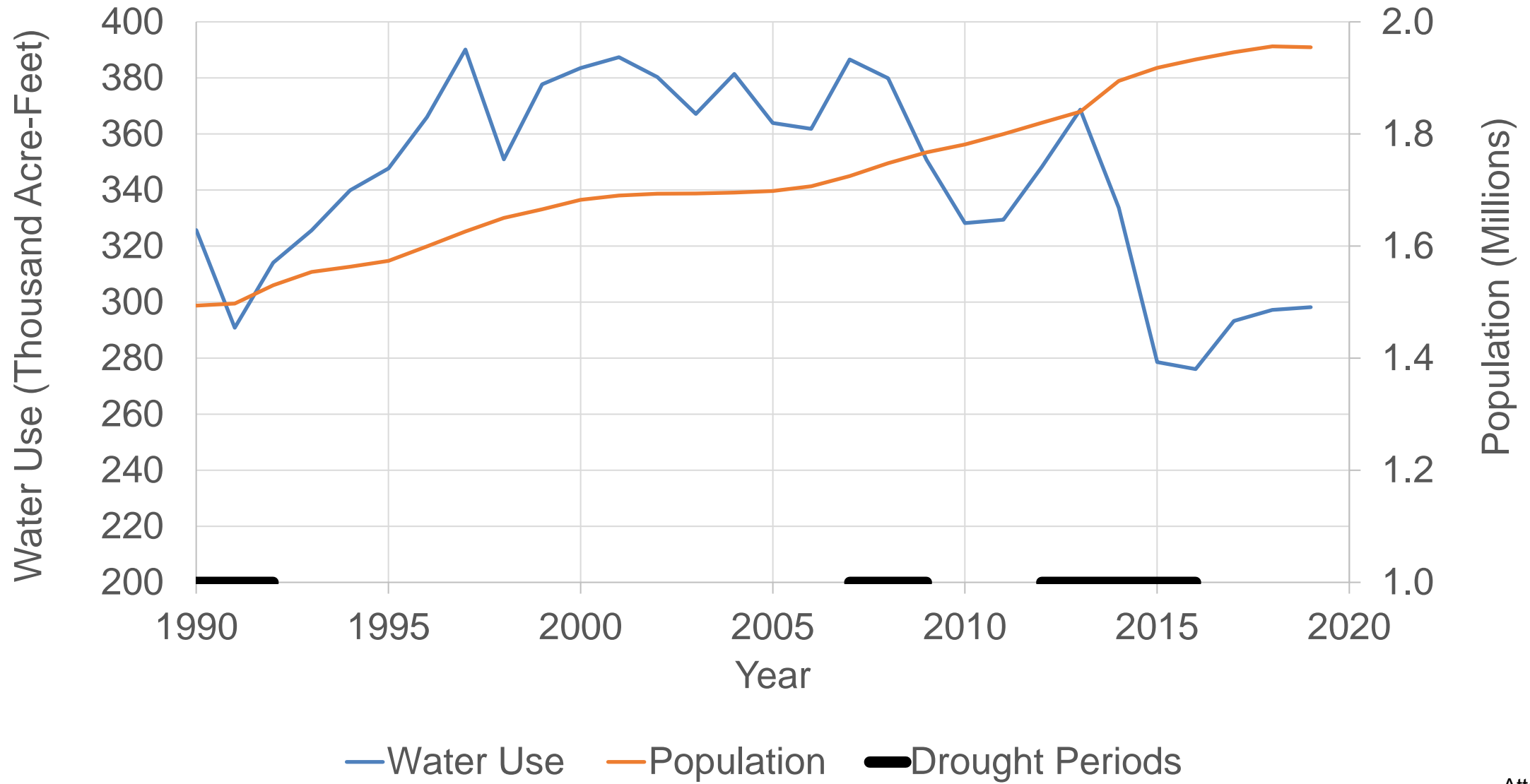
## 3. PLAN, INVEST & MONITOR



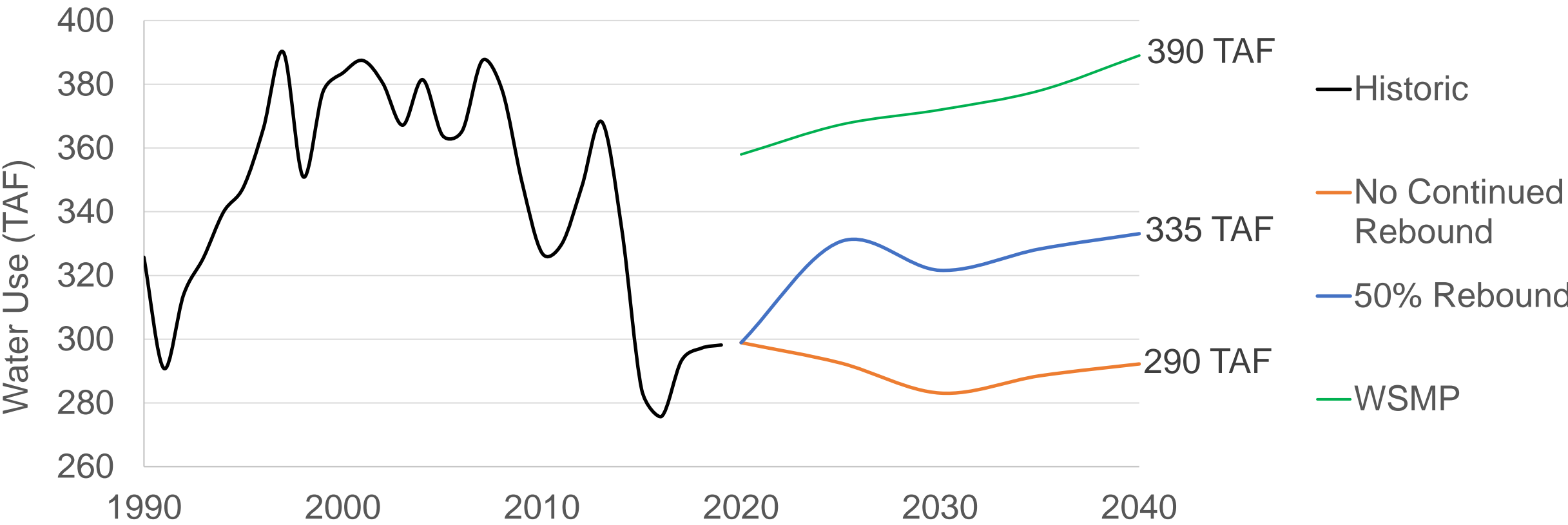
## 2. DEVELOP SCENARIOS



# Historic Water Use and Population

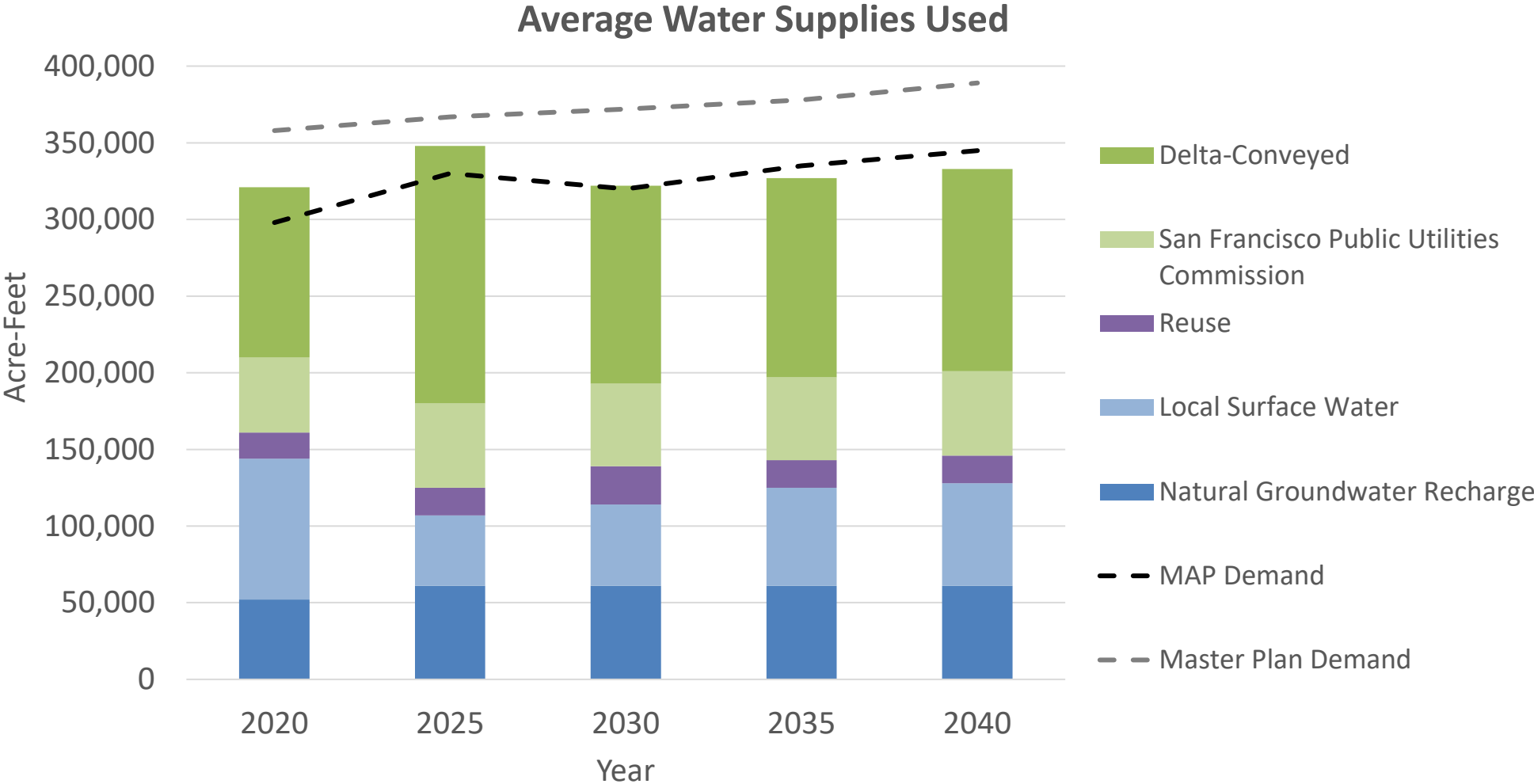


# Historic and Projected Water Use (Including Water Conservation)

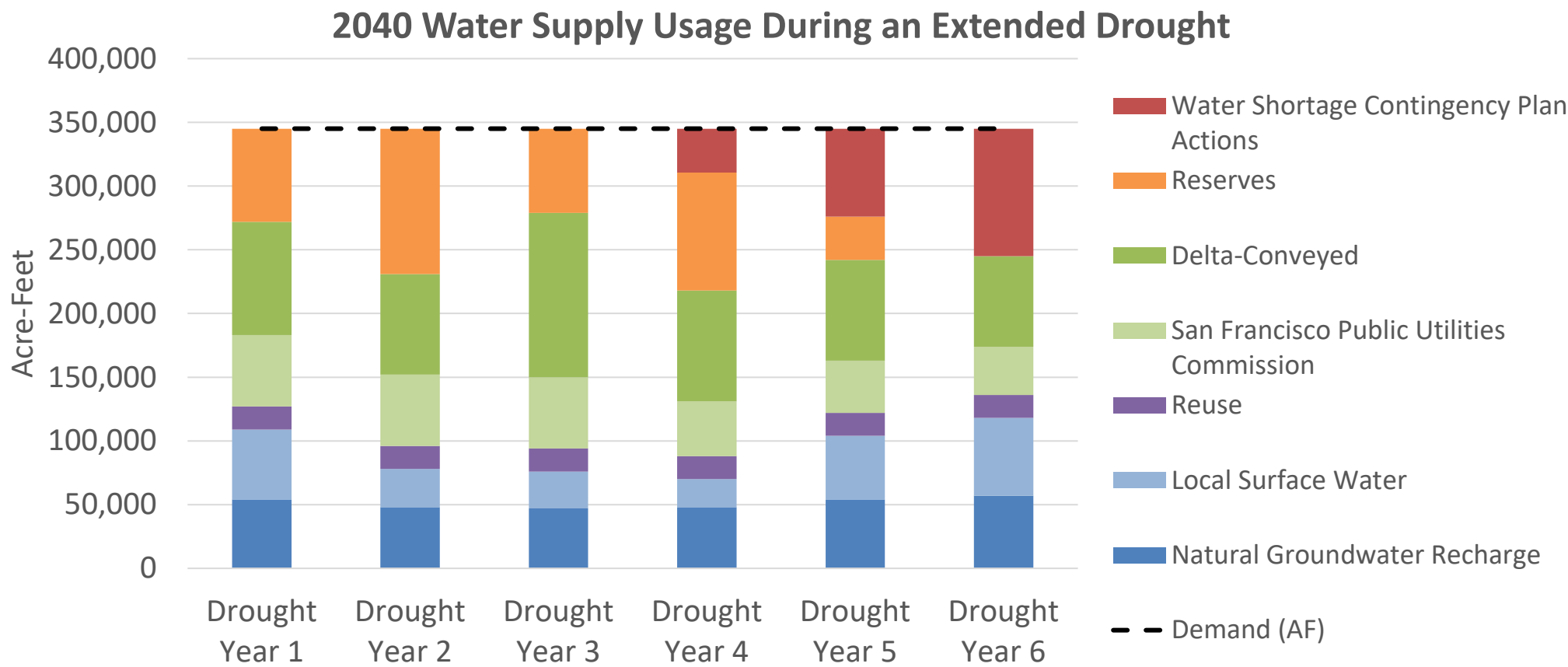


# Water Supply Reliability

## Baseline Investments with New Demands



# Water Supply Reliability: Baseline Investments with New Demands



Does not achieve level of service goal

# Projects Evaluated to Meet Forecasted Demands<sup>1</sup>

## Does NOT Achieve Level of Service Goal

- Groundwater banking
- Pacheco Reservoir Expansion Project
- Transfer Bethany Pipeline
- Los Vaqueros Storage
- Sites Reservoir – 3.2% share
- Additional Centralized In-county Groundwater Recharge<sup>2</sup>

## Achieves Level of Service Goal

- 10 MGD Potable Reuse
- Sites Reservoir – 6.6% share
- Lexington Pipeline
- Refinery Recycled Water

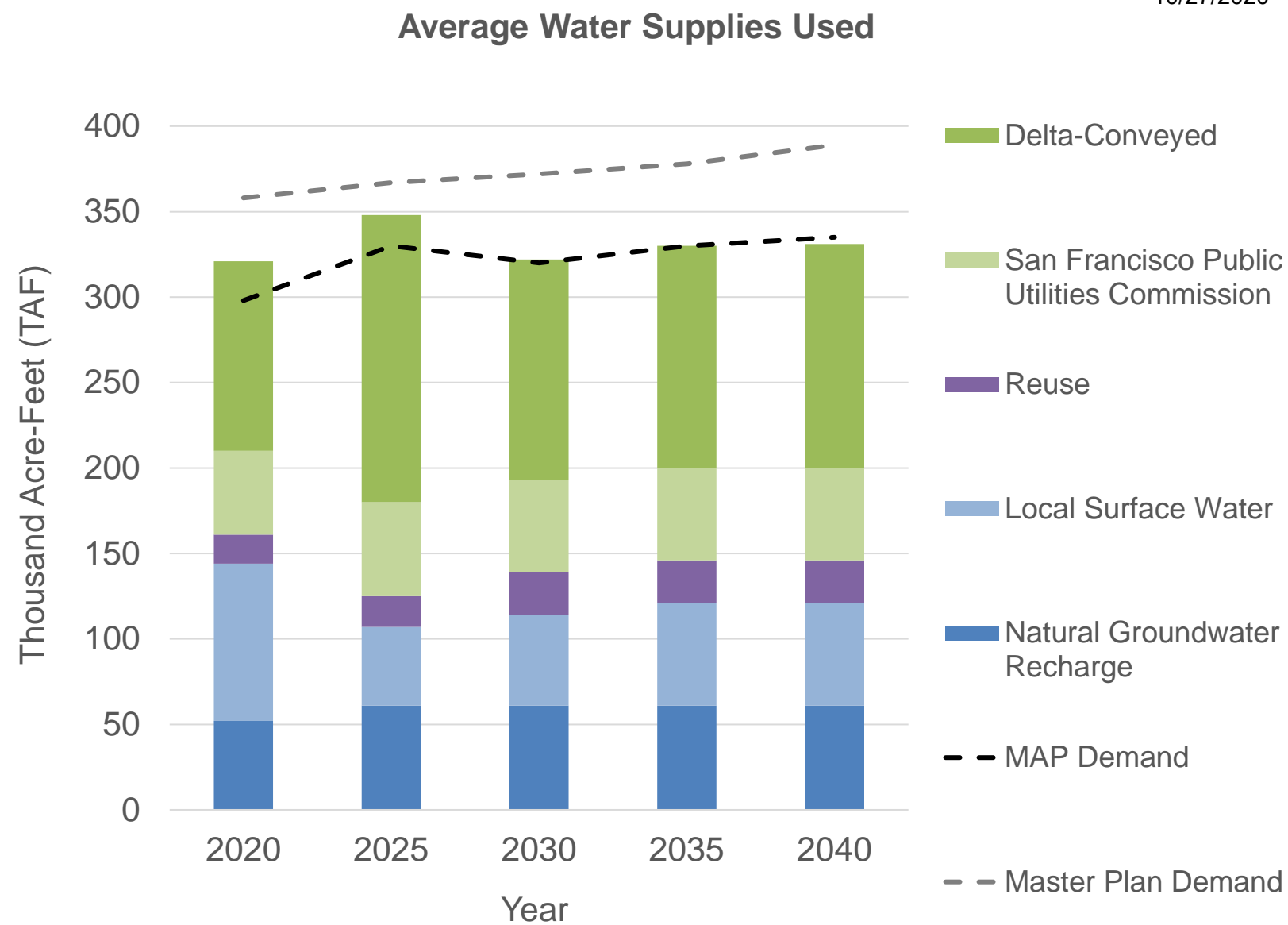
<sup>1</sup>Projects evaluated assuming baseline projects and an additional 11 TAF of water conservation, bringing total water conservation to 110 TAF by 2040

<sup>2</sup>Per the Master Plan, staff completing a thorough analysis of groundwater in the Llagas sub-basin to ensure adequate groundwater storage is maintained throughout the entire sub-basin through 2040

# Reduced Level of Investment Meets Level of Service Goal

Example:

- 11 TAF additional water conservation by 2040
- 10 MGD potable reuse project

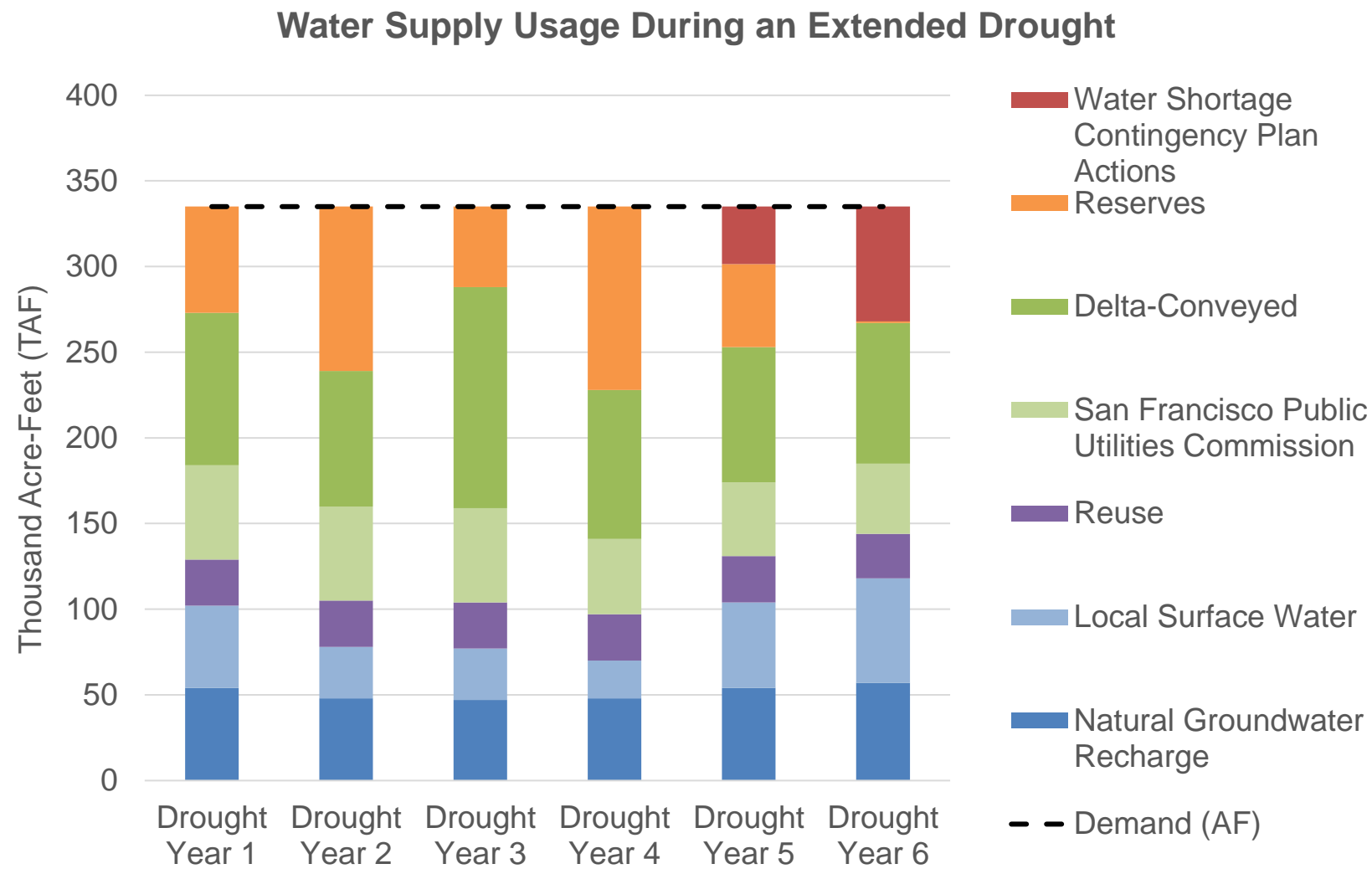


Note: 2020 is actuals for 2019 from the FY21 Protection and Augmentation of Water Supplies report

# Reduced Level of Investment Meets Level of Service Goal

Example:

- 11 TAF additional water conservation by 2040
- 10 MGD potable reuse project



# Other Considerations

- Diversification
- Reduce Reliance on the Delta
- Resilient to future uncertainties (e.g., climate change)
- Groundwater quality
- Drinking water quality regulations
- Cost
- Operational flexibility
- Valley Water influence over supplies and operations (e.g., local supply)
- Implementation complexities and barriers
- Environmental impacts and benefits
- Community benefits (e.g., flood protection)



14  
AMI = Advanced Metering Infrastructure

# Next Steps

- Continue to track demands and update modeling as needed
- Continue to evaluate future uncertainties (e.g., climate change)
- Continue to participate in projects that the Board approves for planning
- Return to the Board each fall with an annual update, and earlier as needed

# Voluntary Call for Water Use Reduction

- At the July 15th, 2020 Retailer Meeting, Chair Hsueh requested to discuss the 20% voluntary water use reduction call with the Board
- Since the last drought, Valley Water has requested a voluntary 20% water use reduction
- Highlights the importance of ending water waste
- May impact messaging for the next drought when water use reductions are required

# QUESTIONS





# Valley Water

Clean Water • Healthy Environment • Flood Protection