

January 16, 2020

Transfer-Bethany Pipeline Coordination

- Supply to LAPs during LVE drawdown and construction
- 7.5 miles, 84-inch Diameter
- 300 cfs (193 MGD) Capacity

Potential Beneficiaries

- ACWD
- Zone 7
- Valley Water
- SFPUC
- BAWSCA
- SLDMWA
- Grassland Water District

Alignment Segments

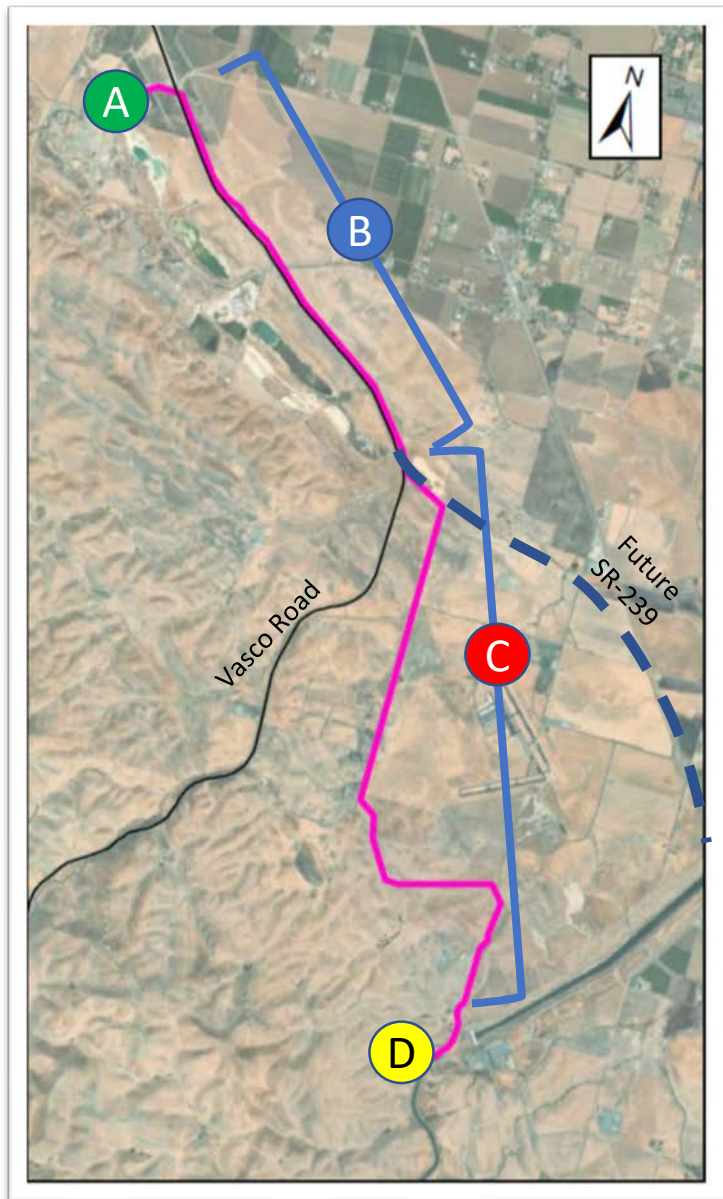
- A. Expanded Transfer Facility
- B. Vasco Road Widening/SR-239
- C. Conservancy Lands
- D. California Aqueduct Turn-In

Key Actions

- Coordinate Segment B Alignment
- Coordination with DWR
- Site access
- Land Acquisition (~21 properties)

Costs

- Design, CM, etc. \$9M
- Land \$5M to \$10M
- Construction \$144M



THIS PAGE INTENTIONALLY LEFT BLANK