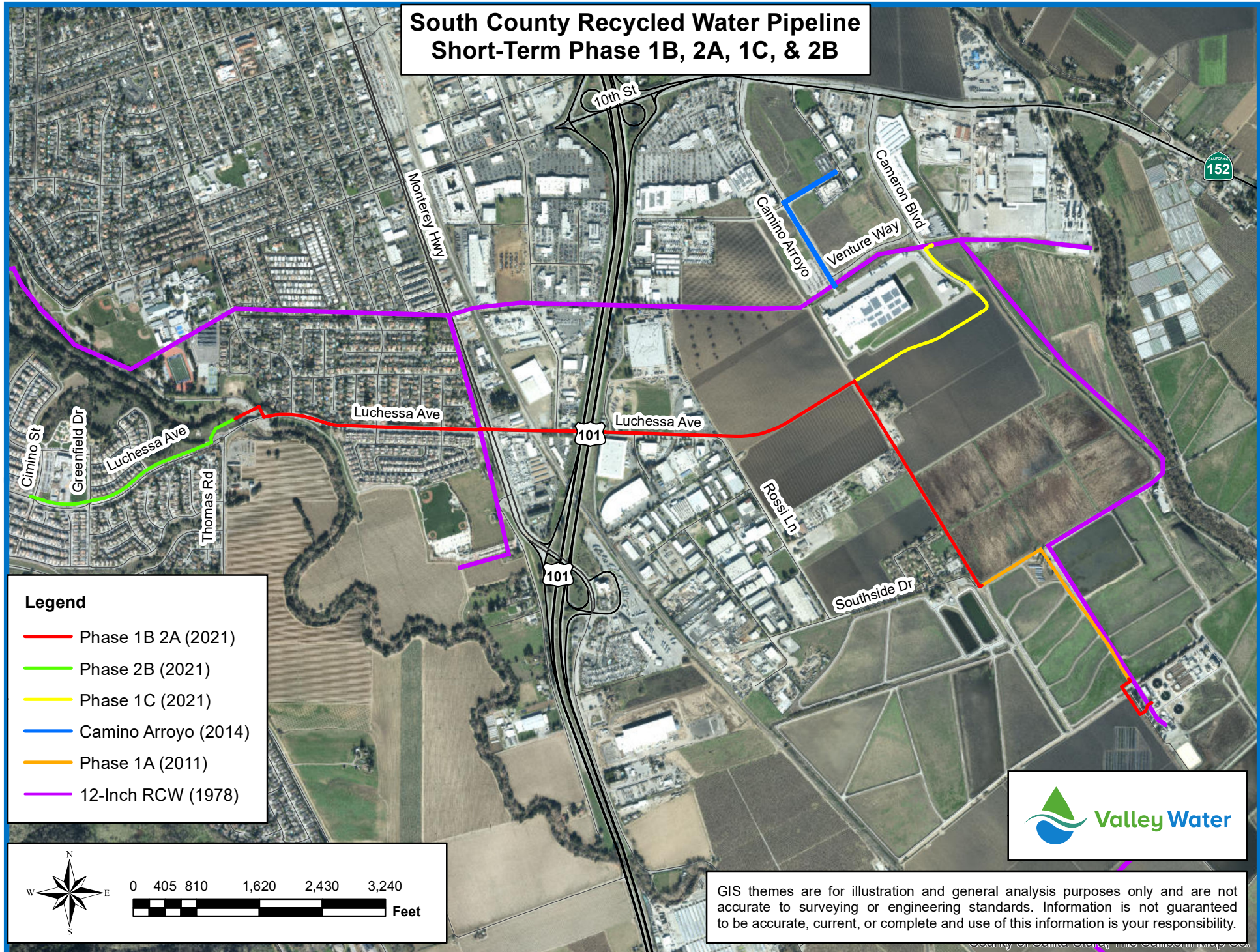


# South County Recycled Water Pipeline Short-Term Phase 1B, 2A, 1C, & 2B



**Legend**

- Phase 1B 2A (2021)
- Phase 2B (2021)
- Phase 1C (2021)
- Camino Arroyo (2014)
- Phase 1A (2011)
- 12-Inch RCW (1978)

0 405 810 1,620 2,430 3,240 Feet



GIS themes are for illustration and general analysis purposes only and are not accurate to surveying or engineering standards. Information is not guaranteed to be accurate, current, or complete and use of this information is your responsibility.



**THIS PAGE INTENTIONALLY LEFT BLANK**