



Purified Water Project



Droughts



Economic
impacts



Land
subsidence risk

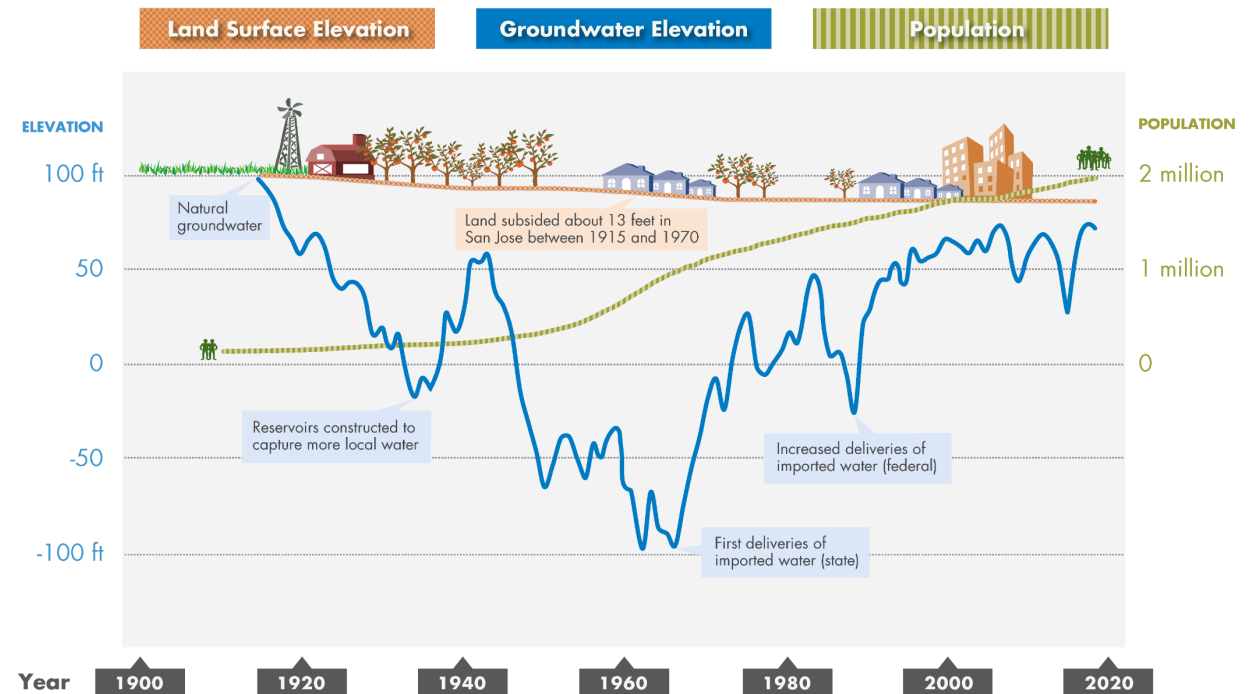
Climate Change Risks Continue to Drive Urgency for Addressing Water Supply Reliability

2



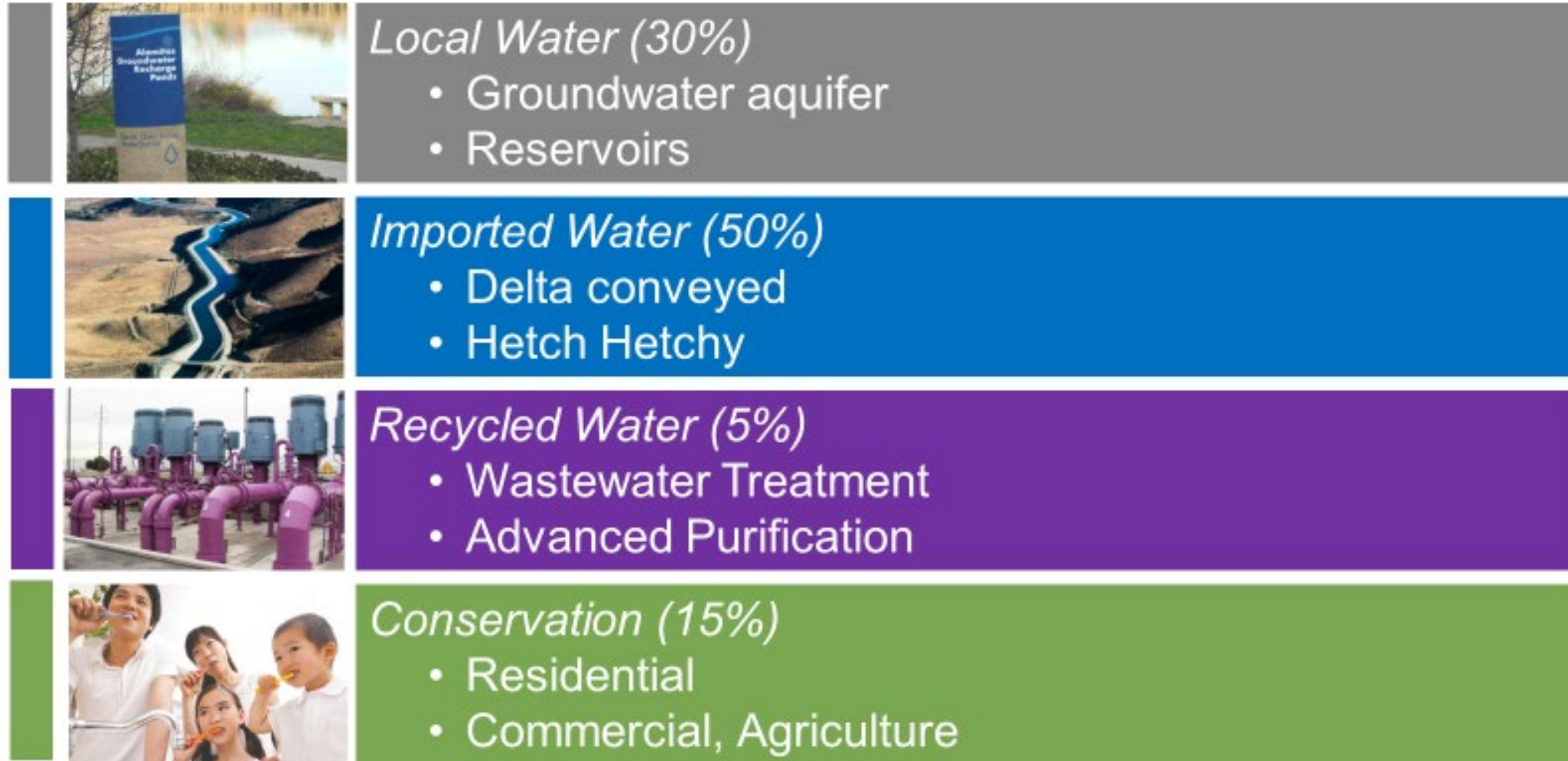
SANTA CLARA COUNTY GROUNDWATER AT-A-GLANCE

a graphic representation not intended as a technical exhibit

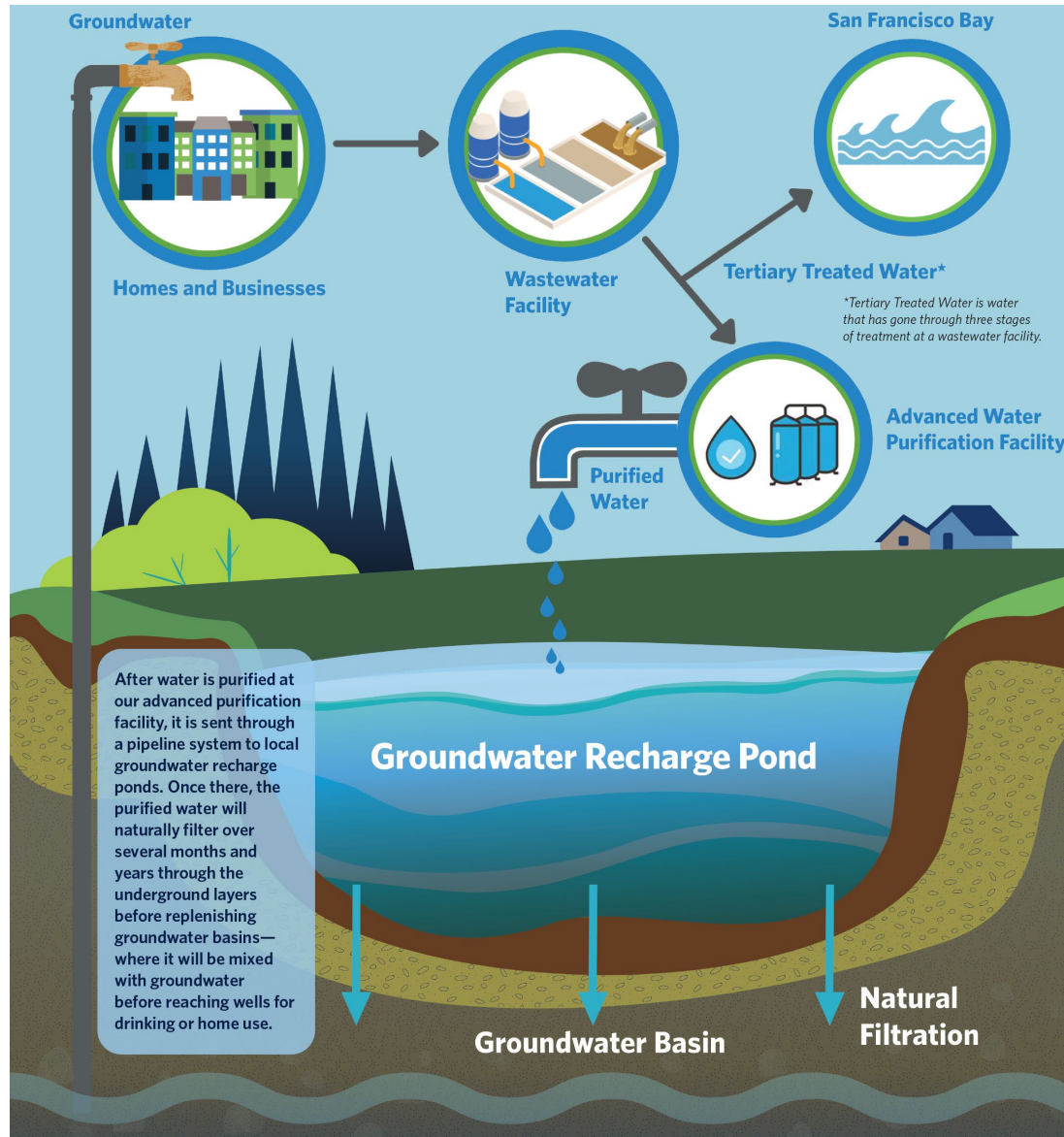


valleywater.org

Recycled and Purified Water is an important component of the water supply portfolio



Recycled and Purified Water



ADVANCED WATER PURIFICATION PROCESS

HIGHLY TREATED WASTEWATER

This water originally comes from the drains of homes and businesses and is treated three times at a wastewater facility.



#1 MICROFILTRATION

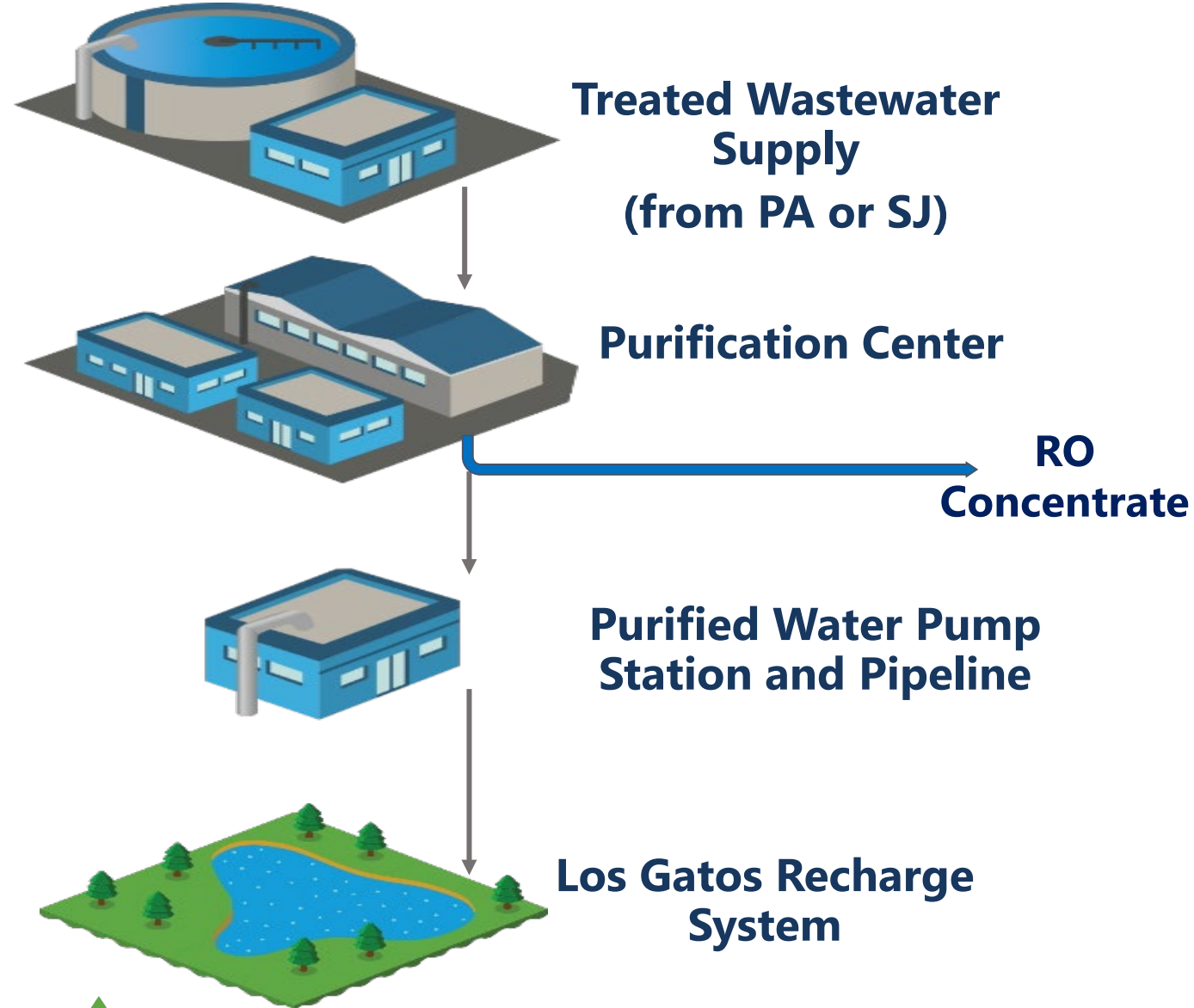


#2 REVERSE OSMOSIS



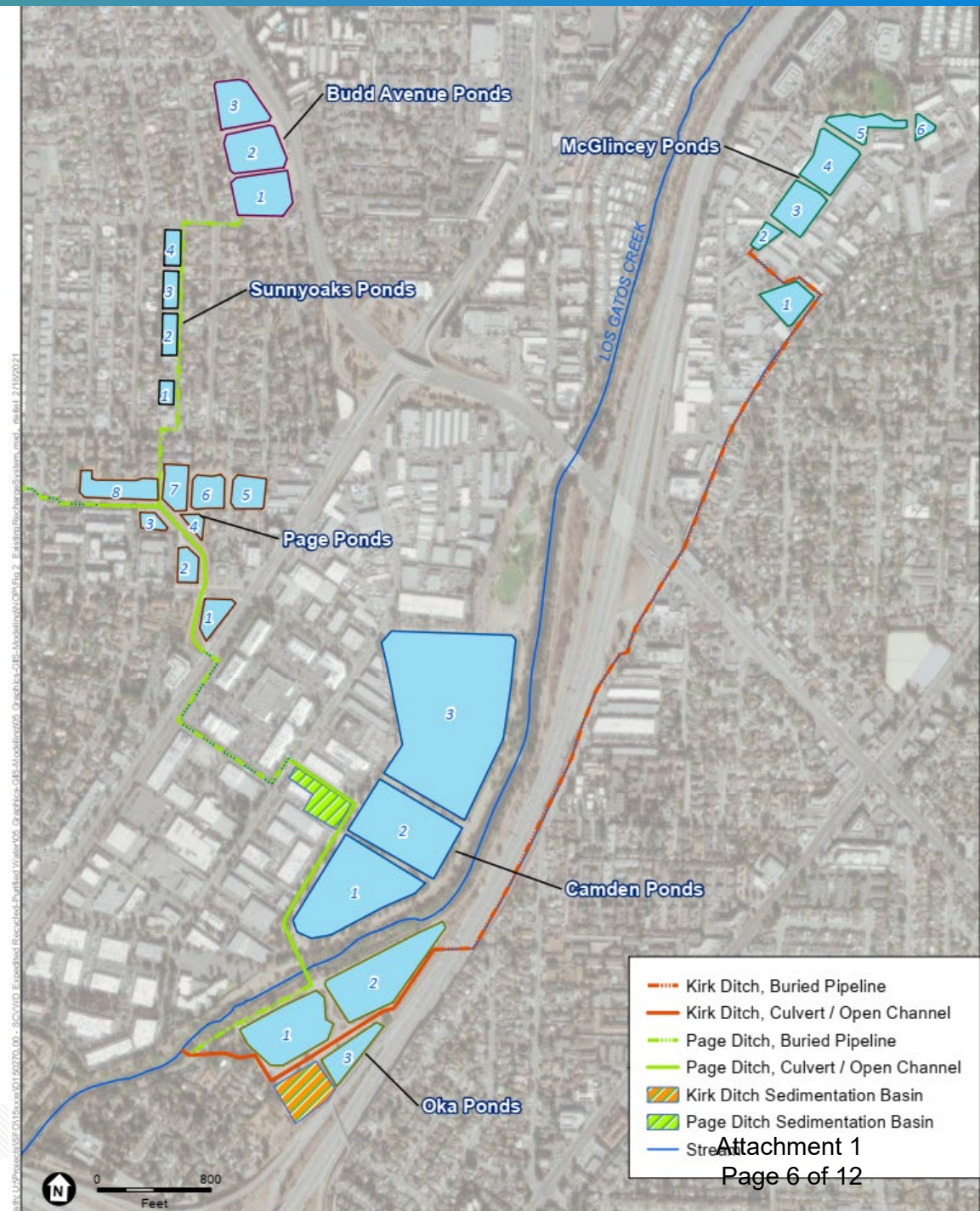
#3 UV LIGHT DISINFECTION AND ADVANCED OXIDATION

Purified Water Project



Project Components Cont'd

- Purified water conveyed to Los Gatos Recharge System
- Integrated into supply sources for groundwater recharge
- Indirect Potable Reuse



Timeline

- Fall 2021: Board decision on project site
- 2022: Valley Water plans to award the project
- 2024: Private partner completes design and permitting (with defined community benefits)
- 2028: Construction will be completed and water flowing to the Los Gatos Recharge system



Environmental/Public Review

- An Environmental Impact Report (EIR) is being created and will be released at a later date.
- EIR Scoping Meeting on March 29, 2021
- Any impacts and mitigations will be identified in the EIR.



CountyWide Reuse Master Plan

Goal:

Identify feasible opportunities for expanding reuse as part of Valley Water's strategy to improve water supply reliability and regional self-reliance

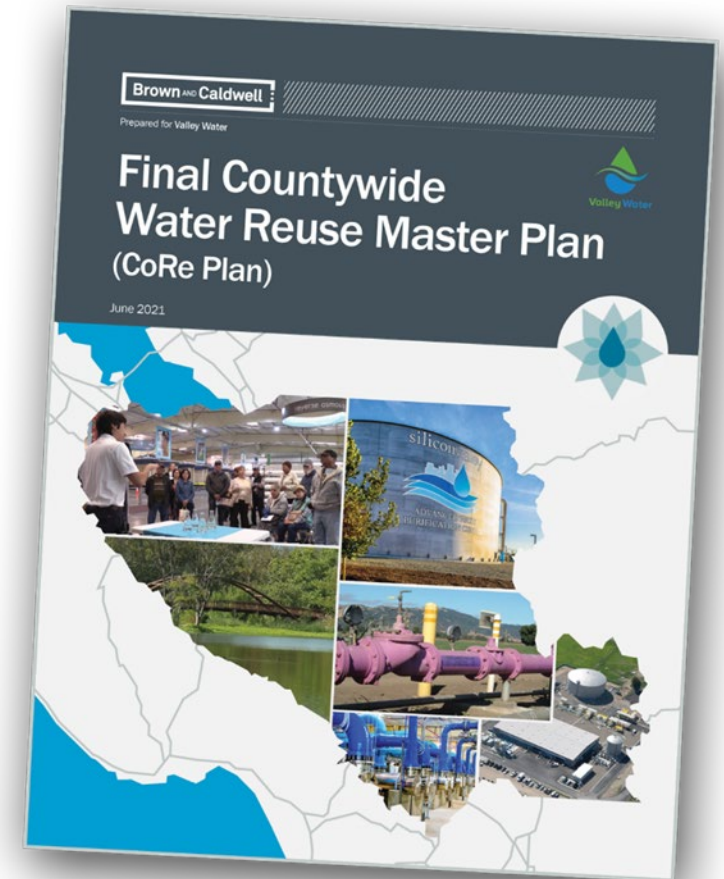
Aligned with Valley Water's One Water Plan and Water Supply Master Plan 2040

Through substantial engagement and collaboration with Partner Agencies

Objectives:

Integrate existing recycled water systems and expand non-potable reuse

Develop purified water systems



Partner Agencies



**Recycled
Water
Producers
(WWTP)**

Palo Alto RWQCP

Sunnyvale WPCP

San José/Santa Clara RWF

SCRWA



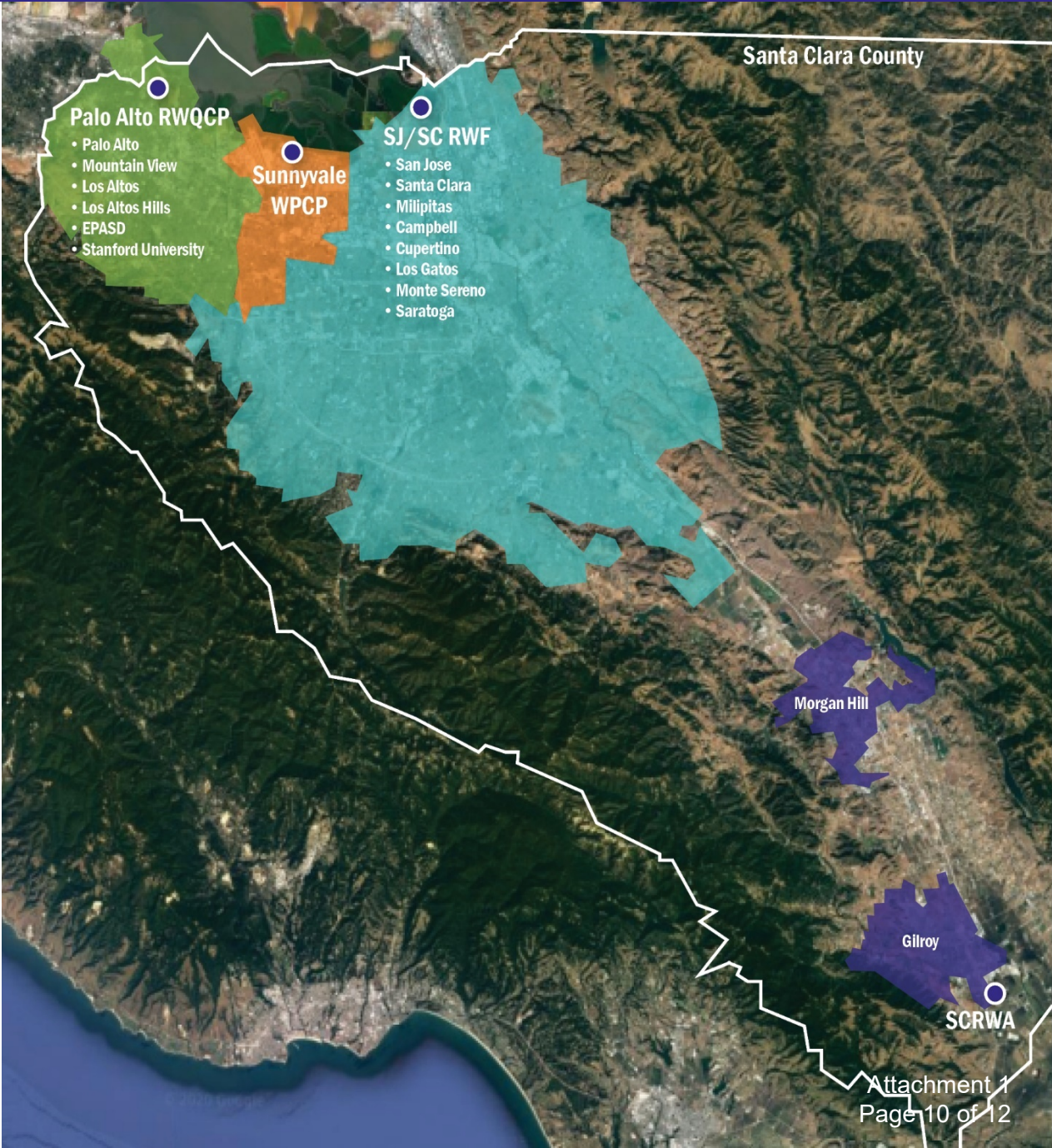
**Recycled Water
Systems (RWS)**

Palo Alto/Mountain View RWS

Sunnyvale RWS

South Bay Water Recycling

South County RWS (Gilroy)



Flexibility Analysis (FLEX)

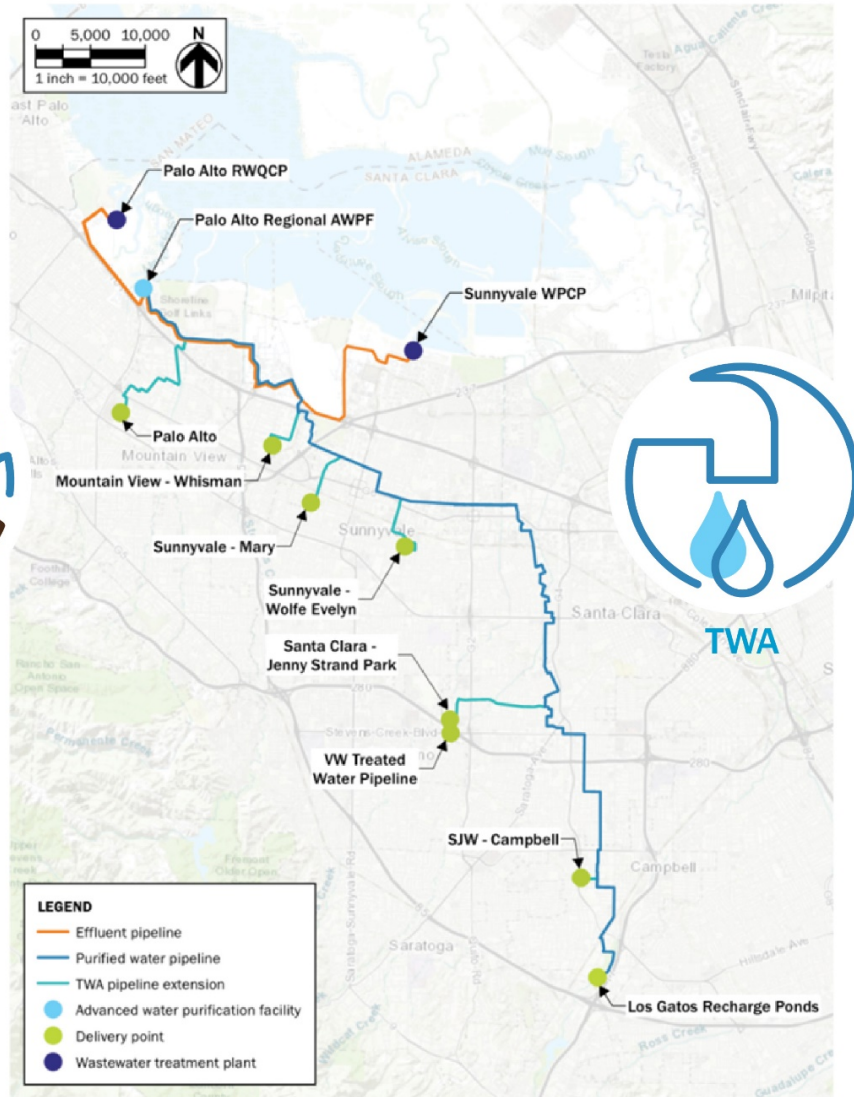
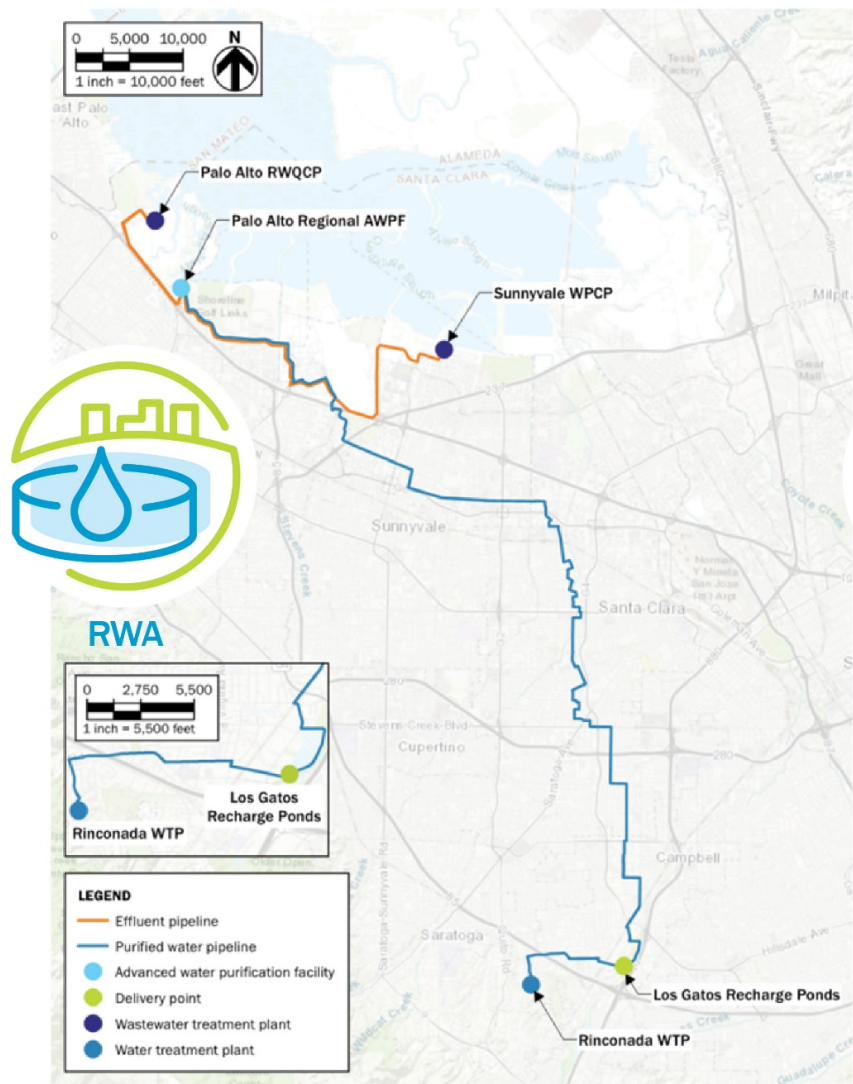


Figure 9-6. Flexible implementation from San José-based AWP: RWA Flex facility locations and pipeline alignments

Note: GWR Flex map is consistent with Figure 6-2 (Portfolio 2a: PA (+SV) GWR)

Figure 9-7. Flexible implementation from San José-based AWP: TWA Flex facility locations and pipeline alignments

QUESTIONS

