

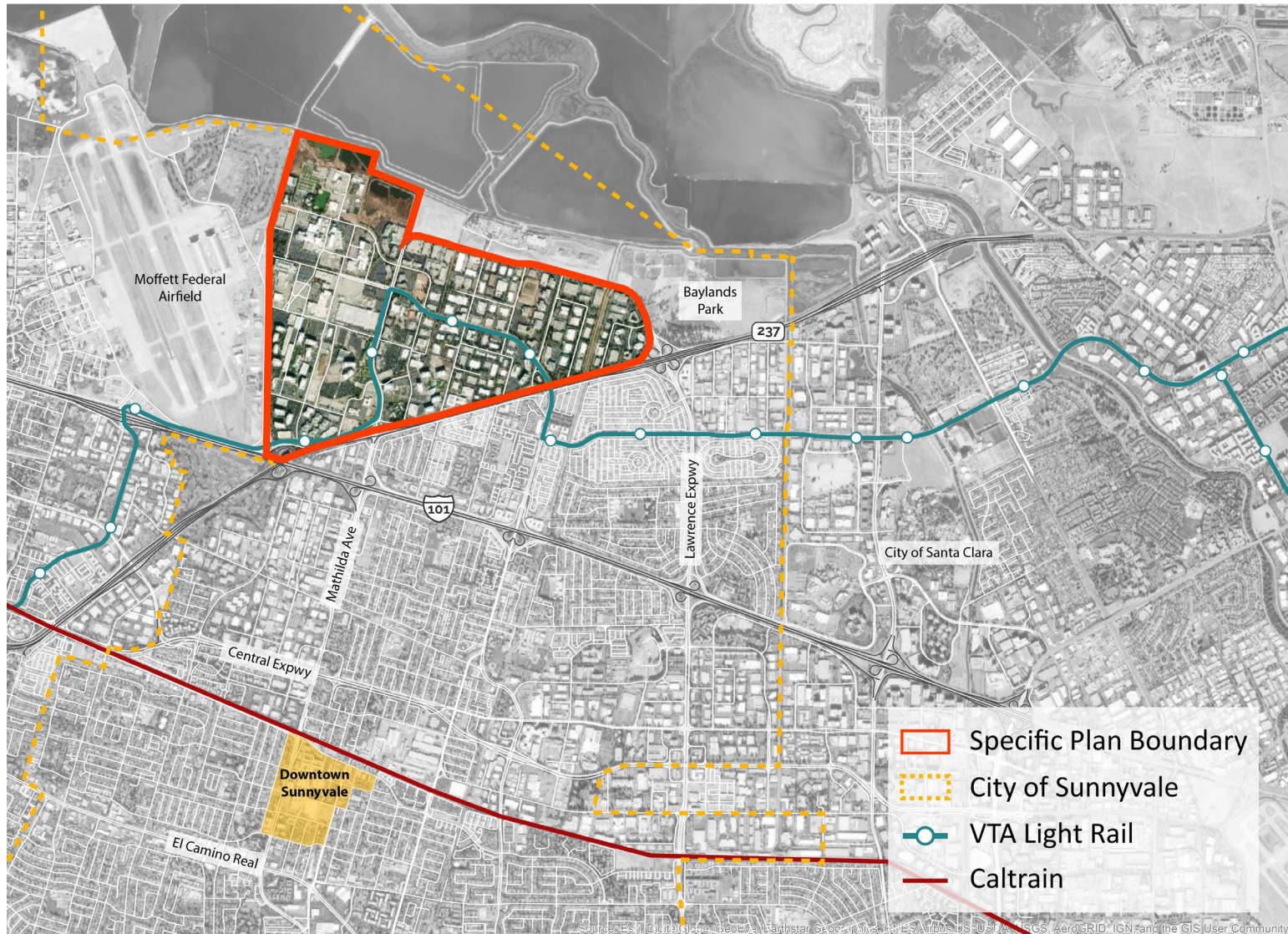


Moffett Park Specific Plan

Joint Meeting:
Sunnyvale City Council and Valley Water Board

October 6, 2021

Moffett Park Specific Plan



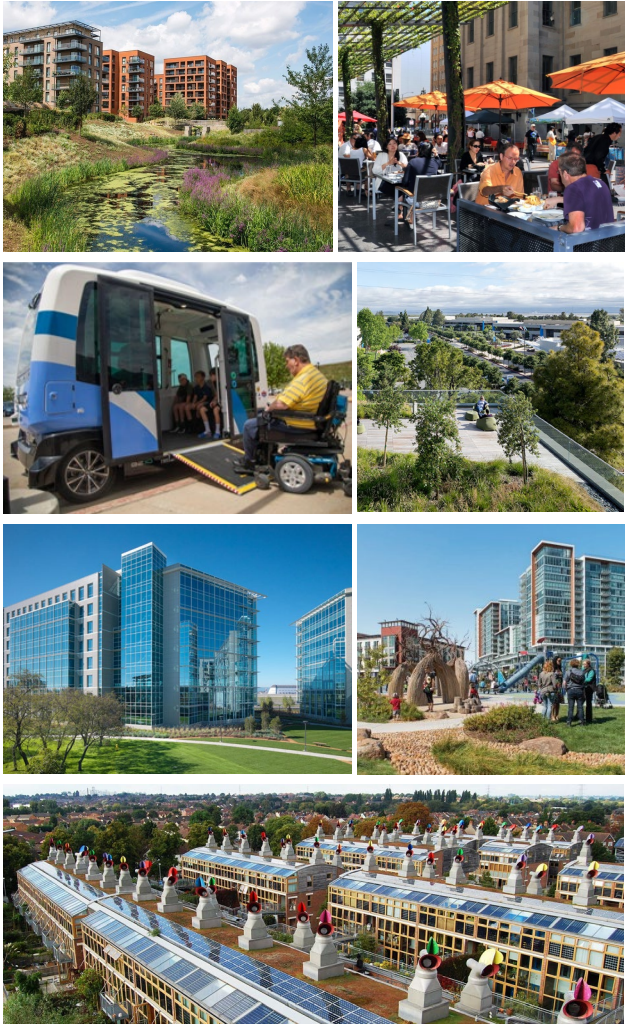
Vision Statement

Redefine the Moffett Park Specific Plan as an
“Ecological and Innovation District”



Moffett Park is an integral part of Sunnyvale and is a well-connected ecological innovation district with a diverse mix of uses that serves as a model of resilience, climate protection, equity and economic opportunity.

Guiding Principles Summary



1. *Resilient + Equitable*
2. *Vibrant + Inclusive*
3. *Diverse Economy + Prosperity*
4. *Accessible + Pedestrian Friendly*
5. *Dynamic + Connected Public Spaces*
6. *Healthy + Biodiverse Environment*
7. *Innovative + Emerging Technology*

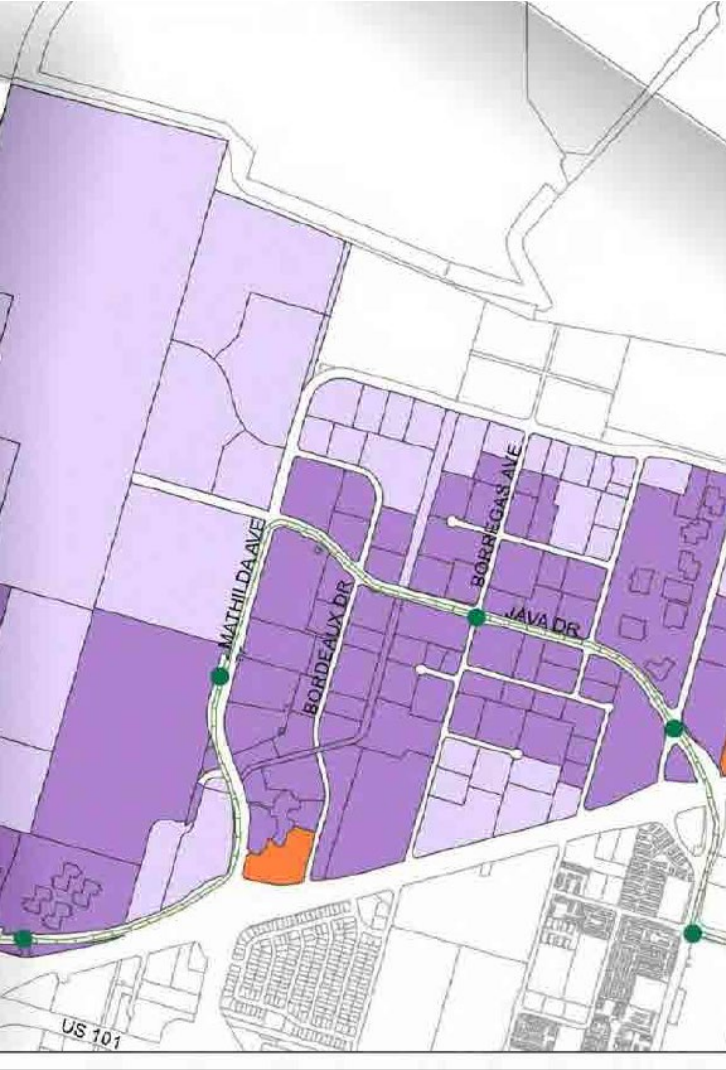
What is a Specific Plan?

- A **comprehensive** planning and zoning tool for a small area
- Establishes the **vision and guiding principles**
- Defines **policy and development standards**
- Strong focus on **implementation**



CITY OF SUNNYVALE MOFFETT PARK SPECIFIC PLAN





Specific Plan Requirements

- **Distribution, location, and extent of the uses of land**, including open space
- Proposed distribution, location, and extent and intensity of major components of **transportation and infrastructure**
- **Development standards**
- A program of **implementation measures**
- A statement of the **relationship of the specific plan to the general plan**



City Council + Planning Commission Direction

- Create comprehensive **community involvement strategy**
- Consider the potential **economic impacts of adding housing** while directing growth toward **transit supportive uses and improvements**
- Redefine the Moffett Park Specific Plan as an **“Ecological and Innovation District”**
- Improve vehicular, pedestrian, bicycle and transit **connectivity**
- Develop and implement **urban design standards for streets, streetscapes, buildings and open space**, which promote walkable and livable environments
- Prepare an **implementation strategy for infrastructure** and services
- Prepare a program-level environmental impact report

Past Project Meetings

- Virtual Public Workshops and Special City Council Study Session Series
 - **11/30/20:** Sea Level Rise & Climate Change
 - **02/01/21:** Transportation & Infrastructure
 - **03/02/21:** Land Use, Housing, Open Space, & Market Conditions
- May 2021: Land Use Concepts and Alternatives
- Aug 2021: EIR Notice of Preparation Released

Moffett Park Specific Plan Land Use Direction

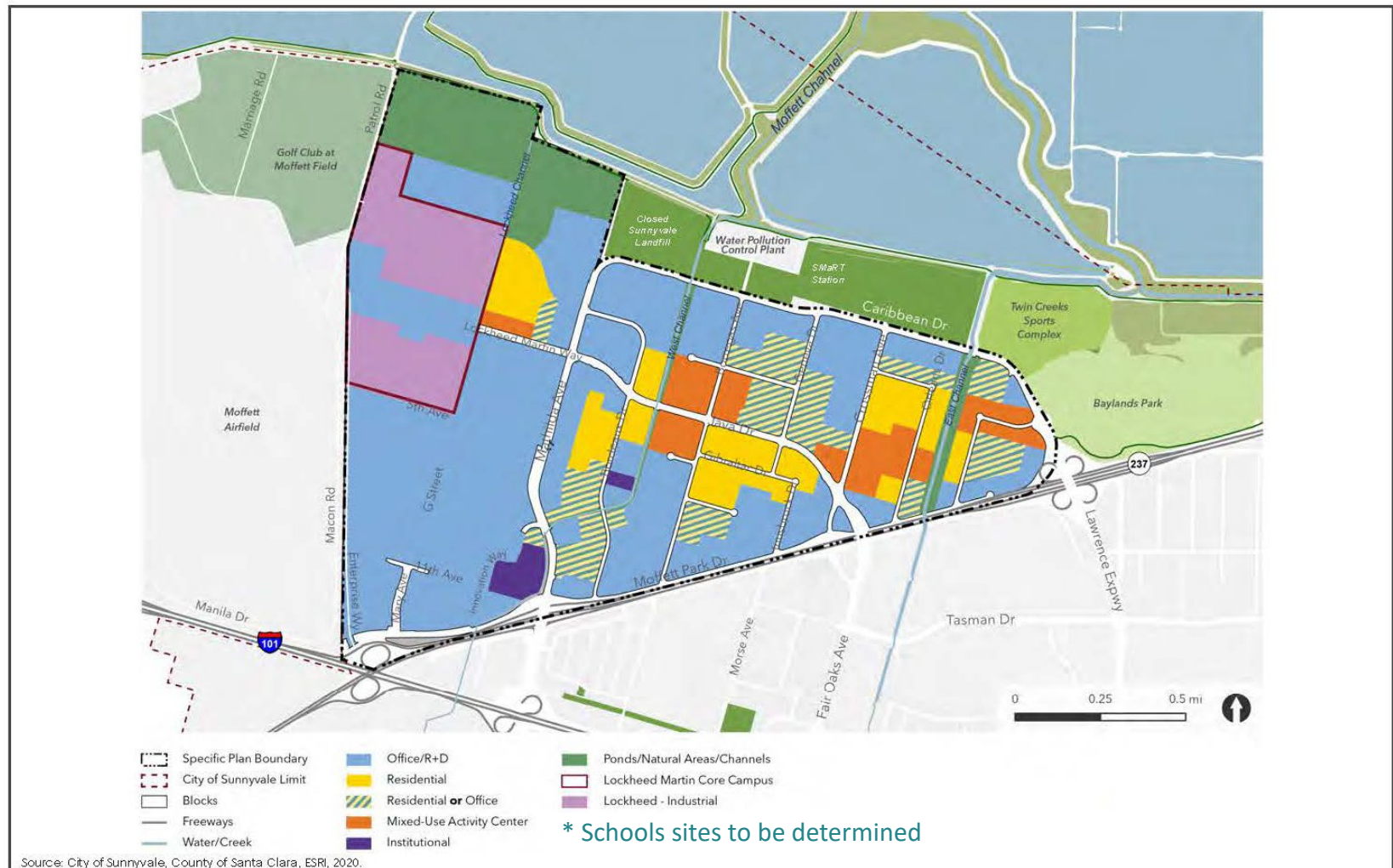


FIGURE 4

Land Use Program for Study

- + 10 million sf (net new) of Office/R+D/Flex
- + 20,000 housing units
- + 500,000 (net new) sf commercial
 - 2 Activity Centers (200K or larger)
 - 3 to 5 Neighborhood Corners (3-10K)

Open Space/Urban Ecology

- Parks, plazas and other open space
- Connected network of eco-patches (Eco-Corridors/Linear Parks)

...continued on next slide

Land Use Program for Study

...continued from prior page

Community Facilities and Services

- Public school/s

Circulation/Mobility Network

- Explore Connected network of streets/paths/trails/and open spaces
 - Linkages across Streets and Water Channels
 - Live
 - Work
 - Shopping
 - Play

Environmental Issue Areas under Study

- Aesthetics
- Air Quality
- Biological Resources
- Cultural Resources
- Geology and Soils
- Greenhouse Gas Emissions
- Hazards and Hazardous Materials
- Hydrology and Water Quality
- Land Use
- Noise and Vibration
- Population and Housing
- Public Services
- Recreational Facilities
- Transportation
- Tribal Cultural Resources
- Utilities and Service Systems

Technical Working Group

- Affordable House Advocates
- Sunnyvale School District
- Santa Clara Valley Unified School District
- Fremont School District
- Foothill-De Anza Community College
- Airport Land Use Commission
- Valley Transportation Agency
- CalTrans
- California Fish and Wildlife
- Valley Water
- Silicon Valley Clean Energy
- Ecology Advocates
- Neighboring jurisdictions
- All City of Sunnyvale Departments

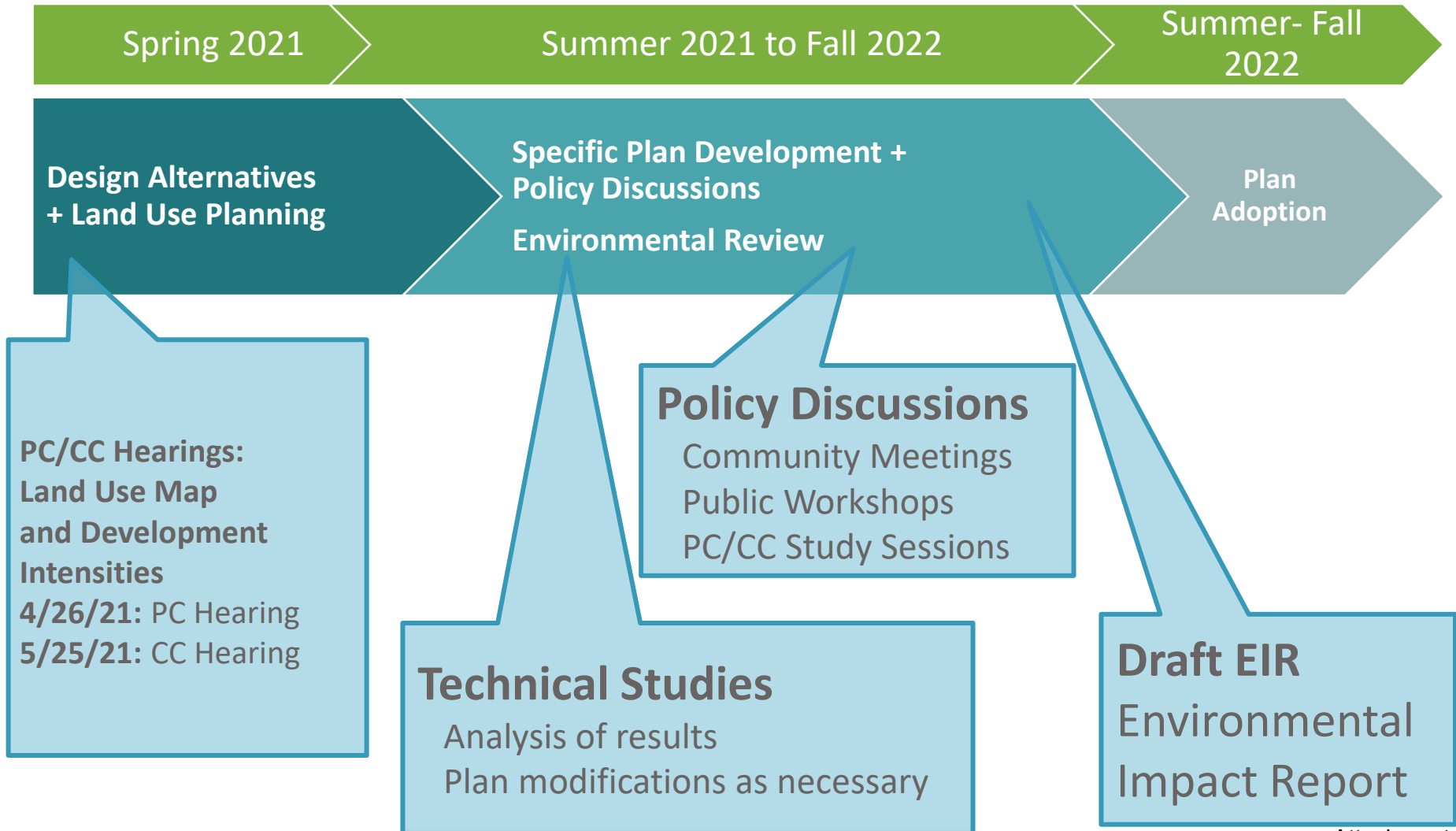
Outreach and Coordination Efforts

<https://www.moffettparksp.com>

- Project Updates
- Technical Studies
- Informative videos
- Study sessions and public events materials



Planning Process Overview



Next Steps

- Upcoming Study Sessions
- Further Collaboration with Technical Working Group, Stakeholders, Advocates
- Online Engagement
- Draft Specific Plan
- Draft EIR
- Public Hearings: Planning Commission and City Council
- Completion Fall 2022

An aerial photograph of the Moffett Park area in San Jose, California. The image shows a large green field in the center, surrounded by residential neighborhoods, roads, and an airport runway to the left. In the background, there are mountains and a body of water. A semi-transparent green rectangle is overlaid on the center of the image, containing the text "Questions & Comments".

Questions & Comments

THIS PAGE INTENTIONALLY LEFT BLANK